



**futurasmus**  
KNX GROUP

11101^11/010111100/// ^100101\*100\*\*// 11101// 11101011101011010



010100100001\*\*\* //10101011000  
101101010101//^10\*111/10000/ ^101010010100100001\*\*\* //10101011000  
101101010101//^10\*111/10000/ ^101010010100100001\*\*\* //10101011000

light+building

## TOP 100 KNX new Devices at light+building 2010

0101 // 110101010 100 11111110\*\*

101010 010101010101011111 100101010//



V.01.02

11 010110110101^1111 10101111111 101011010

101 01010 011111\*\*1 10101111111 101111101/1101011110

## Foreword

Only those who have visited the light+building, doubtlessly the mother of all KNX fairs, know what a venture it is to visit all booths that exhibit KNX devices. But in the 2010 edition, with more than 80 KNX manufacturers among the exhibitors, allocated in three different halls, one needed a great deal of planning and almost military precision in order to visit them all.

The Futurasmus Team not only visited most of the KNX booths, but also took the time to learn about the new devices, evaluate them and make a selection of the top 100 KNX innovations and improvements.

Now we want to share this selection with the users of our web and hope you will find it interesting and even motivating, since it is yet another proof of our standard's successful development and fast expansion.

Just a few words on our general impressions: rapid growing internationalization of visitors and manufacturers, big brands confirmed their market share with their well known product range and the small-medium manufacturers were mostly in charge of the new solutions.

Congrats to the KNXA, and especially to Mr. Lux, for the impressive Top Event show to celebrate the 20th Anniversary of KNX and for the achievement of not less than 200 KNX members!

To end up, I can't help but dedicate this effort to those who, like ourselves, got stuck in Frankfurt thanks to Eyjafjallajökull...

See you at the Frankfurt Messe in 2012 and best regards,

**Anablanca Jiménez**  
Operatons Manager  
Futurasmus KNX Group

01010110

11 101010

## Index

01	ABB	PG 4
02	ANASUS LAB	PG 5
03	ARCUS	PG 6
04	AV STUMPFL	PG 7
05	B+B	PG 8
06	BAB TEC	PG 8
07	BACHMANN	PG 9
08	BASALTE	PG 9
09	BEG	PG 10
10	BEYER DYNAMIC	PG 10
11	BERKER	PG 11
12	BUSCH JAEGER	PG 12
13	CD INNOVATION	PG 13
14	CONTROLTRONIC	PG 13
15	DENRO	PG 15
16	DINUJY	PG 15
17	DIVUS	PG 16
18	EELECTRON	PG 17
19	ELDAT	PG 18
20	ELKA	PG 19
21	ELSNER	PG 20
22	ESA	PG 21
23	EMPURE	PG 21
24	GIRA	PG 22
25	GEPRO	PG 24
26	HAGER	PG 24
27	ICONAG	PG 26
28	INGENIUM	PG 26
29	INTESIS	PG 27
30	IPAS	PG 28
31	JUNG	PG 29
32	LINGG & JANKE	PG 31
33	MDT	PG 31
34	MERTEN / SCHNEIDER	PG 32
35	NETXAUTOMATION	PG 32
36	NEWRON SYSTEM	PG 33
37	PREUSSEN AUTOMATION	PG 33
38	PROMOVEO	PG 34
39	RADEMACHER	PG 35
40	SIEMENS	PG 35
41	SOMFY	PG 37
42	STEINEL	PG 37
43	T2M2	PG 38
44	TAPKO	PG 38
45	TCI	PG 39
46	THEBEN	PG 40
47	TRIVUM	PG 41
48	VIKO ELEKTRIK	PG 41
49	VOCALI	PG 42
50	WAREMA	PG 42
51	WEINZIERL	PG 43
52	WHD	PG 43
53	WIELADN	PG 44
54	WOERTZ	PG 45
55	ZENNIO	PG 45
56	ZUBLIN	PG 47

11 0111//11 010110110101 ^1111 10101111111 101011010111  
101 01010 011111\*\*1 10101111111 101111101/110101111001



[www.abb.com](http://www.abb.com)



### ZONE TERMINAL 8-FOLD

On top of the features already implemented in the 4-fold zone terminal, this new 8-fold version has got 3 binary outputs (1x potential free and 2x 12V DC).



### SWITCH ACTUATOR - ENERGY METERING

Switch actuator 3-fold with energy metering. It measures energy for each channel and it also calculates the sum of all three. Thresholds for basic load control and logging functions.



### DALI LIGHT CONTROLLER

The new DALI Light Controller allows, just as his predecessor, the control of 64 DALI ballasts. But this new product also controls 16 DALI groups. On top of that, allows assigning each ballast to more than one DALI group. Also, it has 8 inputs for brightness detectors in order to make 8 independent constant light control.



[www.anasuslab.es](http://www.anasuslab.es)



#### 4COM UNIT

The new version of the GPRS KoNeXion is still a reference in terms of communication between KNX and the end user. SMS, GPRS, E-Mail and Web access are a great added value to any KNX system and offer multiple functions. Moreover, it has logic functions, schedules, arithmetic calculations, scenes, power supply failure warning via SMS and conversion functions. And it is smaller! (only 6U)



#### 4LINE UNIT

The 4Line Unit, presented in the KNX booth, is a unique device for the supervision of up to 4 KNX lines/areas. When a voltage drop is detected, it switches to its internal or an external power supply, so that the KNX system never goes down. It can even detect shortcircuits. Its output relays warn of the failure (with a status LED for each line).



### SMALL TEMPERATURE SENSOR

Conventional temperature sensor that can be connected to the KNX sensor range from ARCUS. It looks very much like a small halogen spotlight and can be easily integrated in the home decoration.



### ANALOG INPUT 0-10V

For outdoor mounting (IP 65), it has one analogue input for connecting conventional 0-10 V sensors to the KNX bus.



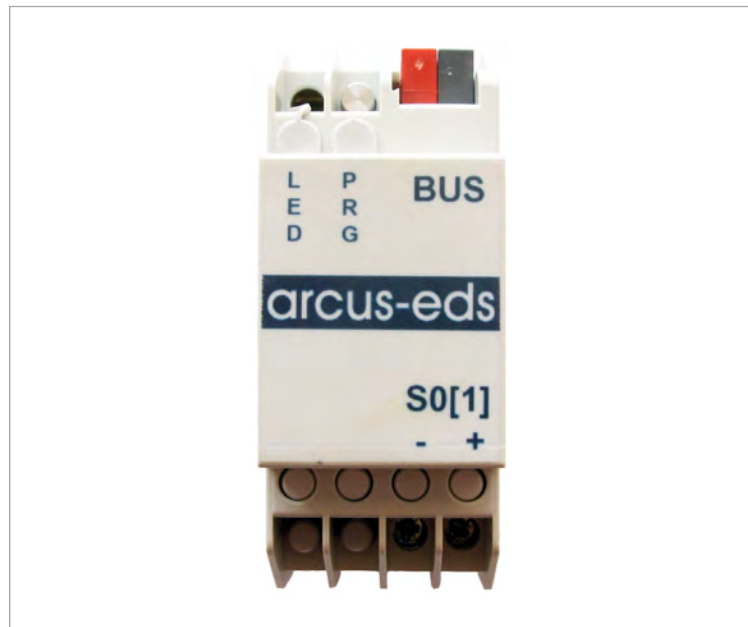
### TOUCH\_IT C3

3,5" color touch display with great design, high resolution, powerful features, easy mounting and extremely simple configuration (via ETS). Even its price is competitive.

- It allows 5 pages with 8 buttons per page; each button sends up 4 group addresses simultaneously.
- Different layouts and colour schemes that can be changed by final user.
- Additional pages for alarm and schedules.
- Screensaver with the possibility of animated .gif files.
- Temperature sensor and PI regulation.
- Additionally, IR sensor and micro SD slot for logging of KNX telegrams, etc.
- 2 different design frames (one of them matching the Eelectron design).

**arcus-eds**  
electronic design services gmbh

[www.arcus-eds.de](http://www.arcus-eds.de)



### S0 PULSE COUNTERS FOR KNX

It allows the connection of any conventional metering device which delivers standard S0 pulses to the KNX bus. There is a second version with two S0 inputs, that can be used for counters delivering two outputs for different tariffs.

**avstumpfl**<sup>®</sup>

[www.avstumpfl.com](http://www.avstumpfl.com)



### VISUALIZATION SOFTWARE

Visualization software which allows the connection of a KNX project with their DMX and IR gateways.

11 0111//11 010110110101 ^1111 10101111111 101011010111  
101 01010 011111\*\*1 10101111111 101111101/110101111001

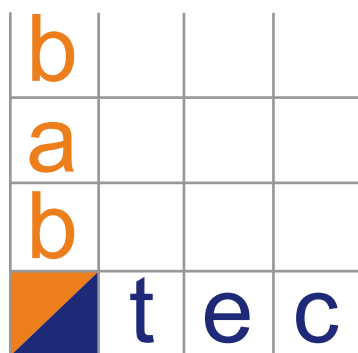


[www.bb-steuerungstechnik.de](http://www.bb-steuerungstechnik.de)

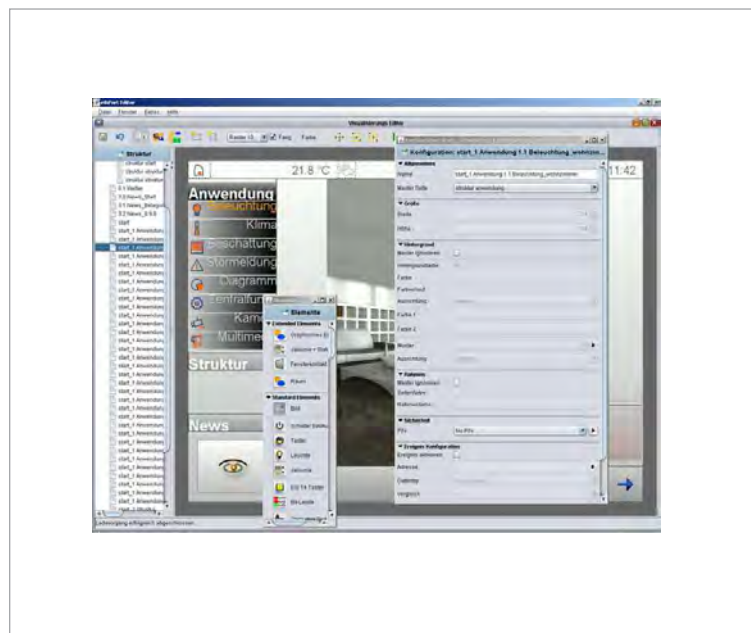


### M-BUS GATEWAY

This gateway is a master M-Bus device to which up to 25 M-Bus devices and 200 values can be connected. Its has been optimized with a simplified commissioning method for M-Bus.



[www.bab-tec.de](http://www.bab-tec.de)



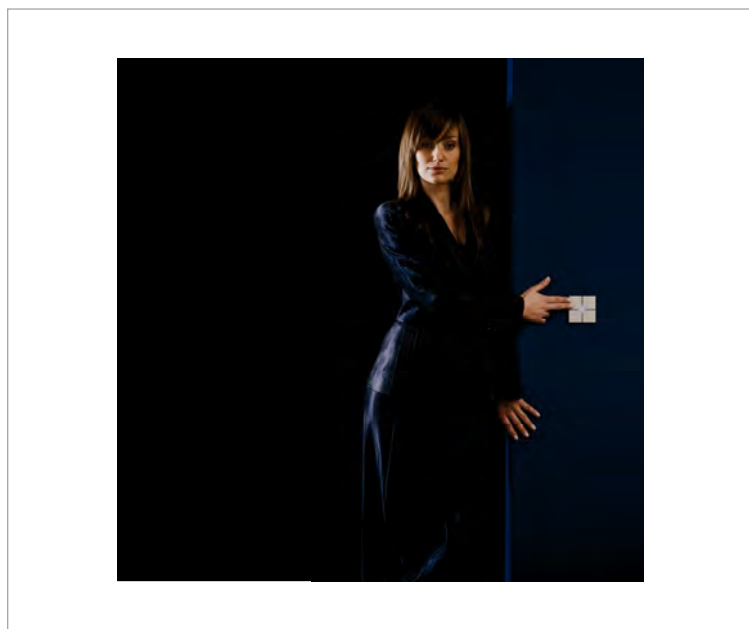
### eibport OPTIMIZATION

The new visualization editor has been completely revised and needs a firmware upgrade of the hardware. The new version includes UPnP functionality to be able to control, for instance, multimedia servers.



**BACH  
MANN**[www.bachmann.com](http://www.bachmann.com)**WORKSTATION PUSH-BUTTON**

Workstations for office and conference rooms' purposes which can be fitted with own KNX push buttons (custom module format).

**basalte**<sup>TM</sup>  
SWITCH TO EVERYTHING[www.basalte.be](http://www.basalte.be)**CAPACITIVE ROOM CONTROLLER**

Maintaining their exquisite design, their new capacitive push buttons include an LCD display and Room Controller regulation.

11 0111//11 010110110101 ^1111 10101111111 101011010111  
101 01010 011111\*\*1 10101111111 101111101/110101111001



[www.luxonat.com/en/](http://www.luxonat.com/en/)



### PRESENCE DETECTORS

Complete range of presence detectors in different shapes and sizes, optimized for each purpose (indoor and outdoor). We would like to highlight their small LUXOMAT (only 45 mm ø x 34 mm H).

**beyerdynamic**))))

[www.beyerdynamic.de](http://www.beyerdynamic.de)



### AUDIO CONFERENCE SYSTEM

This manufacturer is planning to bring out an audio conference system with KNX gateway.

**B.**[www.berker.com](http://www.berker.com)**B.IQ LABELLING POSSIBILITIES**

Now you can order your B.IQ with personalized labelling (ordering is done in a similar way as with the TS Sensor push button range).

**IP GATEWAY WITH SQUEEZE BOX CONTROL**

The Berker IP Gateway can now control the Logitech Squeeze Box.

**CONTROL CENTER 9"**

New touch display with elegant design in 9" size. Its user interface is quite unique and has interesting features such as scenes simply created by end user, recording of KNX telegrams for presence simulation, automatic creation of favourite functions, SD and USB hidden and easily accessible connections, etc.



[www.busch-jaeger.de](http://www.busch-jaeger.de)



#### **priOn ACTUALIZATION**

Now you can order a smaller LCD display for your priOn push buttons, which significantly reduces the cost.

The application program has been improved, specially referring the room temperature control.



#### **ROOM THERMOSTAT WITH DISPLAY FOR FAN COILS**

Very intuitive display with push buttons for easy control fan coil units.



#### **DIMMING ACTUATORS**

New range of dimming actuators which allow the connection of more than one channel in parallel in order to increase the supported load power (automatically detected).



[www.cdinnovation.com](http://www.cdinnovation.com)



### MAESTRO KNX CONTROL CENTER ACTUALIZATION

This powerful visualization (software + hardware) can now integrate any video Intercom system which makes use of the SIP protocol. This manufacturer has also presented an application for Maemo operating systems for remote control of their visualization.

**CONTROLtronic**  
Building Control Systems

[www.controltronic.com](http://www.controltronic.com)



### CAPACITIVE PUSH BUTTON RANGE

Full range of capacitive push buttons for universal mounting box and standard 55x55mm frames (compatible with all traditional manufacturers). Available with different channels (from 1 to 10 fold) and also as Room Controller. Its competitive price also includes BCU.



[www.controltronic.com](http://www.controltronic.com)



### GLASS CAPACITIVE PUSH BUTTON RANGE

High quality, very stylish glass capacitive push button range available in two different models: with or without thermostat.

The thermostat version has got a very innovative and easy to use cursor to navigate into its multiple and advanced functions.



### SHUTTER ACTUATORS

4-fold shutter actuators for the control of 24 V DC blind drives. It uses PWM control to achieve a very smooth movement of the louvres.



### COMMISIONING BOX

This commissioning box is meant to make the bus connection easier in order to program you KNX devices. It includes: DIN rail connector, WIFI access point, power supply, Ethernet connexion, etc.

**denro**[www.denro.com](http://www.denro.com)**DENRO ONE ROOM CONTROLLER**

Denro ONE is a very eye-catching room controller with a fine and innovative design (white, grey and black). It is even more attractive since it is very easy to use, which makes it suitable not only for home purposes, but also for office buildings and hotel rooms.

Apart from all the usual functions, this device includes a scene module.

Another very useful feature for hotel rooms is the possibility of changing the language of all the texts of the display using a 1 bit object.

**DINUY**[www.dinuy.com](http://www.dinuy.com)**KNX RF DEVICES**

This company has announced the release of a series of devices in accordance with the KNX RF medium, such as an RF gateway, RF dimmer, RF brightness and temperature sensor, etc.



[www.divus.eu](http://www.divus.eu)



### DIVA

22" magnificent touch display with the following specs: full HD, LED back light, multi touch, TV functions, vertical or horizontal mounting, and frames available in different colours.



### SUPERIO AND SUPERIO PLUS

Avant-garde 10,1" wide screen (1024 x 600) touch display with the following specs: LED back light, frame available in different colours or white or black glass with aluminium side bars.

The SUPERIO PLUS model has more memory, web cam, presence detector via IR for auto switch-on of the display, remote control, micro and integrated speakers. Optionally, one can add Bluetooth connectivity.



### MIRROR

What looks like a common mirror (available in two different sizes and shapes) hides a capacitive touch display (15" or 19").

The original display only becomes visible when activated by touch and it turns back to mirror after one minute inactivity.



**DIVUS**[www.divus.eu](http://www.divus.eu)**OPENDOOR**

Video intercom that can be integrated via IP in the KNX Control visualization software.

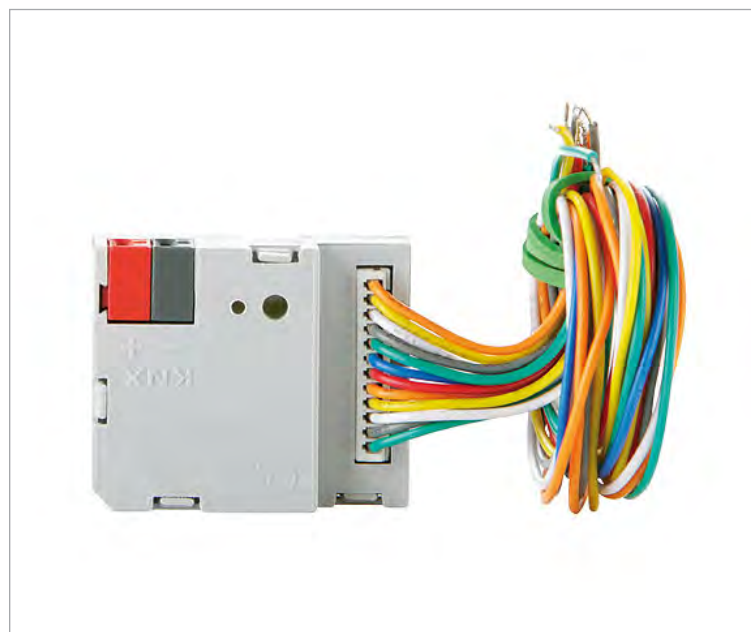
**eelectron**[www.eelectron.com](http://www.eelectron.com)**NEW DESIGN PUSH-BUTTON RANGE**

The creative design of Italian manufacturer eelectron has come up with a very imaginative push button range, that goes from the basic 4-fold push button to the advanced touch screen (in collaboration with ARCUS).

11 0111//11 010110110101 ^1111 10101111111 101011010111  
101 01010 011111\*\*1 10101111111 101111101/110101111001



[www.eelectron.com](http://www.eelectron.com)



### BASIC SYSTEM COMPONENTS

In order to complete their hotel access control (card readers), eelectron has presented a whole range of basic KNX system components from push-button interfaces to different types of actuators (on/off and blinds). Quite interesting: the universal interface with 8 analog / digital inputs and 4 Led outputs.



[www.eldat.de](http://www.eldat.de)



### RF GATEWAY AND EASYWAVE PRODUCT RANGE

Thanks to the ELDAT RF Gateway now we can use the whole RF product range of this manufacturer in KNX installations, including high number of simple remote controllers (hand transmitters, micro transmitters, wristband transmitters, necklace transmitters, radio wall switches, etc.).

**elka**  
elektronik[www.elka.de](http://www.elka.de)

### DMX GATEWAY

The new version of ELKA's DMX gateway is now smaller, cheaper, can be programmed via IP and has improved configuration software which allows the assignment of several group addresses to each DMX channel.



### LED CONTROL PANEL

With 3 columns and 8 capacitive push buttons per column. There is a labelling space and status LED beside each button. The status LEDs can be configured in different ways, such as colour (red, blue and green), operation (blinking or fixed), etc.



### CO2, TEMPERATURE AND HUMIDITY SENSOR

Now you can measure all the relevant values (CO2, temperature and humidity) and achieve absolute comfort in a room with just one device.



### FACADE CONTROL TOUCH SCREENS: WS1000 AND KNX Touch One

This touch screen of innovative design is available in two different sizes and has been specifically conceived for the control of facades:

- KNX Touch One: the small (and basic) version allows the control of 8 facades (even editable by final user), more than 60 KNX functions, anti-glare screen, small RF remote control (8 functions that can be assigned to KNX telegrams) etc.
- KNX WS1000 Color: the bigger (full version) has same functionality but controls up to 22 facades and has over 150 KNX functions. It has an analogue camera input whose images can be stored (triggered by KNX events) in an SD card insertable in the screen (the stored images are .jpg files and no videos).



[www.esahmi.com](http://www.esahmi.com)



### MY VISION II

The touch screen manufacturer ESA has exhibited the new version of their visualization software My Vision II. Its main feature is the wizard tool used for creating the visualization in just a few easy steps.



[www.empure.de](http://www.empure.de)



### APPLE APP

In combination with a specific Weinzierl IP gateway, Empure has developed an Apple App for the control and visualization of KNX systems.

11 0111//11 010110110101 ^1111 10101111111 101011010111  
101 01010 011111\*\*1 10101111111 101111101/110101111001



[www.empure.de](http://www.empure.de)



### PRONTO SCRIPT

In addition to the Apple App, the above mentioned Empure-Weinzierl IP gateway can also be used with a Pronto Script in order to control KNX systems with the high standard and celebrated Philips Pronto remote controls.

# GIRA

[www.gira.de](http://www.gira.de)



### CONTROL CLIENT TOUCH DISPLAYS

The new Control 9 Client and Control 19 Client Touch Screens are optimized to be used in combination with the Home / Facility Server.

# GIRA

[www.gira.de](http://www.gira.de)



## IP ROUTER

The new GIRA IP router has got two Ethernet connections that allow the direct connection between different IP routers without the need of a switch.

Furthermore, it has a micro SD slot for KNX telegram logging, keeping a backup of the project, etc.



## HOME / FACILITY SERVER ACTUALIZATION

The Home / Facility Server 3.0 version has new features such as: Apple iTunes remote control via IP, iPhone App, UPnP for Loewe devices, etc.



## PUSH BUTTON SENSOR 3

Apart from the usual KNX functions, with this new push button range, each channel can be configured as two different buttons (right and left) or just one (middle).



[www.eib-tab.de](http://www.eib-tab.de)



### CONTROL PANELS WITH BCU

The robust aluminium control panels from GePro have made a big step forward and now have integrated BCU. There is also a new version that includes a key lock for critical KNX functions. Keep this in mind if you need custom made control panels with personalized labelling.



[www.hager.es](http://www.hager.es)



### PRESENCE DETECTOR

The new ceiling presence detector 360° has a front mask that allows easy access to the parameters Lux and Timer. Quite practical for end users.



**hager**[www.hager.es](http://www.hager.es)

### KNX RF MEDIA COUPLER

The new RF media coupler allows configuration of all RF devices via ETS, like its predecessor, but now it also accepts bidirectional communication.



### DOMOVEA

Hager presented its new visualization concept, based on easy to use (and configure) and dynamic user interface.



### ENERGY COUNTER

The energy counter is available in two versions (both with S0 pulse output):

- Direct measurement up to 100 A.
- Measurement with transformer from 50 A to 6000 A.



[www.iconag.de](http://www.iconag.de)



### BCON ACTUALIZATION

The BCON software is now available in a new hardware version, which simplifies the visualization creation process. You just select the functions and it automatically creates a visualization structured in menus and submenus.

The alarm module has also been upgraded with a better Web interface, and optimized for E-mail warnings to Blackberry mobile devices.



[www.ingeniumsl.com](http://www.ingeniumsl.com)



### KNX-Busing GATEWAY

Ingenium has announced the release of a KNX Gateway for the integration of their own Bus system (named Busing).

**Intesis**  
software[www.intesis.com](http://www.intesis.com)

### ENOCEAN GATEWAY

Gateway between the EnOcean RF protocol and KNX whose main feature and advantage is the fact that it is bidirectional.

Not KNX, but also interesting: this manufacturer has presented EnOcean gateways for controlling Mitsubishi and Daikin units with pre-configured channels for easy configuration.



### GATEWAYS TO VARIOUS A/C SYSTEMS

Several KNX gateways allow bidirectional control of LG, Samsung, Daikin and Mitsubishi Electric indoor units.



[www.ipas-products.com](http://www.ipas-products.com)



### AXESSO ACTUALIZATION

The successful Axesso access control system has been improved in two ways:

- A new outdoor card reader in reduced size (standard simple mounting box)
- The new Hotel card readers have a very complete interior unit that recognizes the card inserted and allows advanced functions and management.



### BACnet GATEWAY

DIN rail device that allows communication between BACnet and KNX.



### COMBRIDGE STUDIO EVOLUTION

Starting from the well known ComBridge Studio Suite, the new IPAS's visualization has been named ComBridge Studio Evolution and has some enhanced features:

- Significant improvement of the user interface (based on the use of windows and different desktops) and new editor.
- Creation of all kinds of graphics editable by end users (color, size, number of values shown, etc.).
- Complete energy management module (measurement, graphics, logging, consumption tendencies, maximeter, etc.).
- Integration of the Russound multiroom systems in KNX.
- Link between different Buses (OPC, Modbus, BACnet). Etc.



[www.ipas-products.com](http://www.ipas-products.com)



### COMBRIDGE HCC

This new member of the ComBridge family is a DIN rail hardware with integrated web server which allows not only the graphical visualization of 250 communication objects, but also logical, mathematical and comparison functions, scenes and schedules (weekly and annual).

[www.jung.de](http://www.jung.de)



### ROOM CONTROLLER

With a new look, it has a display and 2 double push-buttons. Very important: the display itself can also be used as a double push button.

Also, if you need even more push buttons, you can add a conventional module with 4 additional double push-buttons (this additional module is not KNX and thus more affordable)

11 0111//11 010110110101 ^1111 10101111111 101011010111  
101 01010 011111\*\*1 10101111111 101111101/110101111001

# JUNG

[www.jung.de](http://www.jung.de)



## LED CONTROL PANEL

With 3 columns and 8 capacitive push buttons per column. There is a labelling space and status LED beside each button. The status LEDs can be configured in different ways, such as colour (red, blue and green), operation (blinking or fixed), etc.



## FACILITY PILOT ACTUALIZATION

The Facility Pilot has been optimized in different ways, but we would like to emphasize the control of the Logitech Squeeze Box and iPhone App.

**Lingg & Janke**[www.lingg-janke.de](http://www.lingg-janke.de)**IP SWITCHES**

These conventional looking push buttons (with or without symbols) have a BCU integrated and 4 buttons. They are very affordable. But, on top of that, in order to reduce costs, up to 3 additional push buttons (without BCU) can be connected via flat cable to each KNX push button.

All these push buttons have Facility Web functionality integrated and can thus be accessed via IP using a NK-FW from Lingg & Janke.

**MDT**<sup>®</sup>  
Gebäude  
Automation

[www.mdtautomation.de](http://www.mdtautomation.de)**KNX PRODUCT RANGE**

For the first time, German manufacturer MDT Automation has presented its very complete range of KNX products, which include: system components, switching, dimming and blind actuators, binary inputs, logic module, USB interface, push buttons, presence detectors, visualization, etc.

Great value for money.

11 0111//11 010110110101 ^1111 10101111111 101011010111  
101 01010 011111\*\*1 10101111111 101111101/110101111001

**merten**

[www.merten.com](http://www.merten.com)

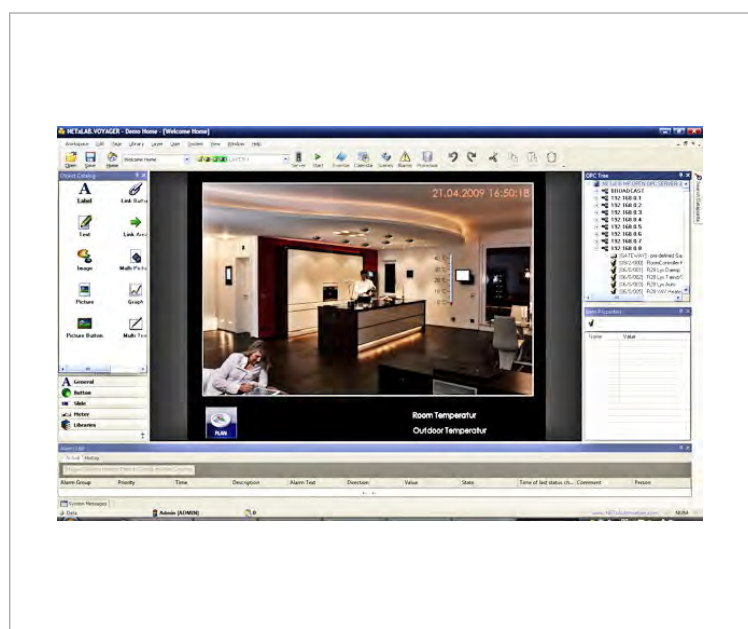


### TOUCH PANEL 7"

Merten has enhanced its popular KNX catalogue, among other, with a new range of touch displays. The new displays, which now include a 7", have a more up to date design and a complete visualization and control software.

**NETxAutomation**  
Software GmbH

[www.netxautomation.com](http://www.netxautomation.com)



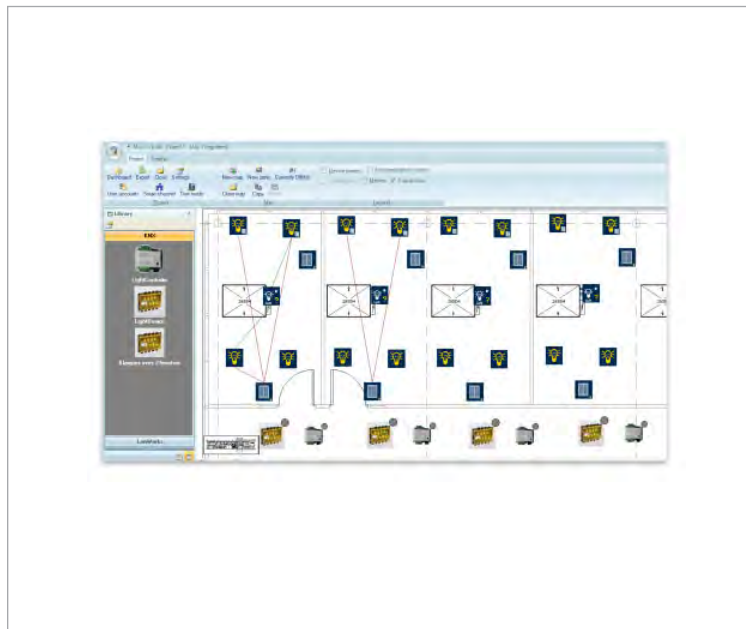
### SMARTVOYAGER

The new visualization software of NETxLAB is called SmartVoyager and is oriented to small-medium size KNX systems. The creation of the visualizations is made in a much easier way than their already existing NETxLAB Voyager Visualisation Server, which is more appropriate for bigger projects.





[www.newron-system.com](http://www.newron-system.com)



### MULTIPROTOCOL OPERATING SOFTWARE

This software developing company is working on the release of a new application that is meant to facilitate the interconnection of multiple protocols: KNX, Lon, BACnet, Mbus, OPC, ModBus.



[www.preussen-automation.eu](http://www.preussen-automation.eu)



### INPUT / OUTPUT MODULE

Preussen has fitted into this 8U module 12 output relays and 12 potential free binary inputs to achieve great functionality.

Let us point out that in case of no Bus connection, the binary inputs can be used to switch the outputs.

11 0111//11 010110110101 ^1111 10101111111 101011010111  
101 01010 011111\*\*1 10101111111 101111101/110101111001



[www.preussen-automation.eu](http://www.preussen-automation.eu)



### DMX Gateway

The DMX gateway of this manufacturer, who is entering the KNX industry after a large experience in other fields, does not only allow control of the 512 DMX drivers, but also the recording and execution of light sequences.

P R O M O V E O<sup>®</sup>

[www.promoveo-technology.com](http://www.promoveo-technology.com)



### PROMOVEO SERVER

Promoveo presented its black box server with pre-configured software (management and configuration software) for KNX visualizations in combination with T2M2 touch displays.



[www.rademacher.de](http://www.rademacher.de)



### SHUTTER DRIVER

This manufacturer of shutter drivers showed a new device with integrated BCU and interesting security objects that become active when faced with a blocked shutter and other obstacles.

With the use of this driver, you do not need shutter actuators any more.

**SIEMENS**

[www.siemens.com](http://www.siemens.com)

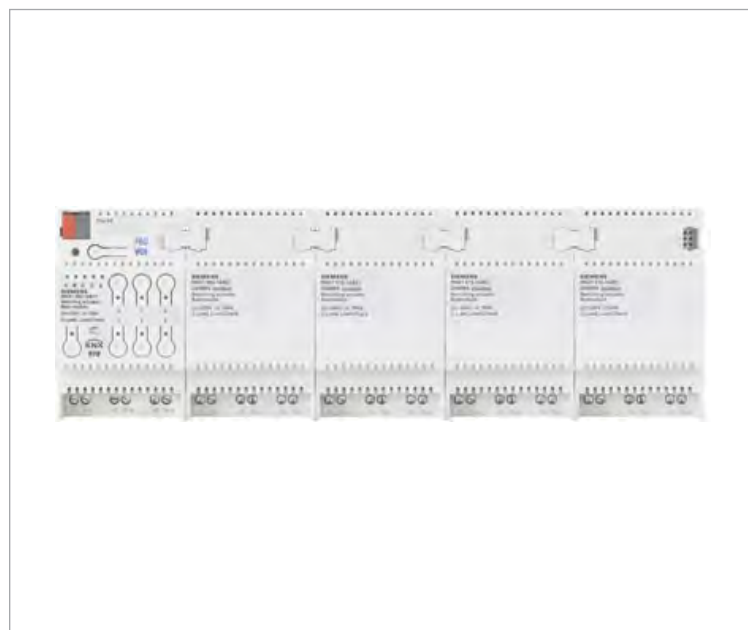


### LOGO! CM

The LOGO! concept is now more flexible. Now you can combine extension modules of conventional inputs and outputs with their LOGO!-KNX Communication Module. The maximum number of input / outputs is to be shared between the extension modules and the LOGO! CM.

**SIEMENS**

[www.siemens.com](http://www.siemens.com)

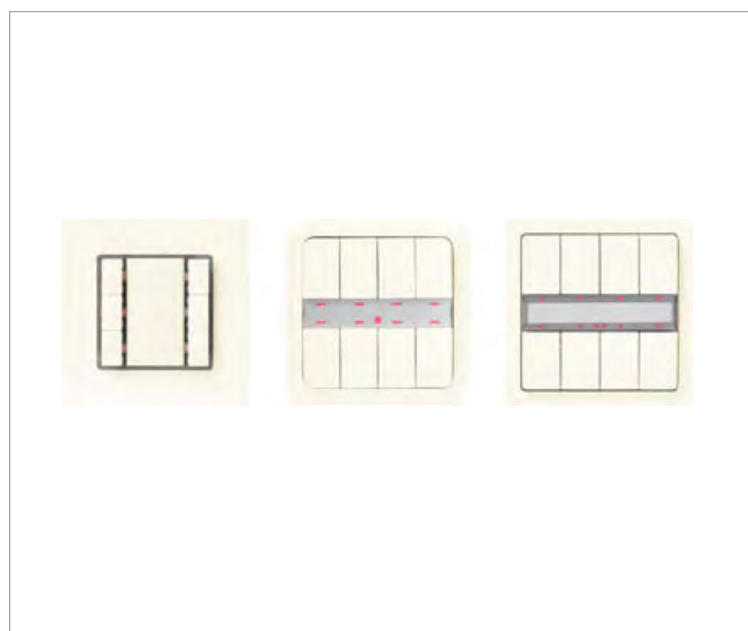


### SWITCHING AND DIMMING MODULAR ACTUATORS

Starting from a basic 3-fold module with KNX BCU, one can add up to 4 additional 3-fold modules (15 channels all together)

As for the switching actuators, they have current measurement (optimized resolution: 80mA) per channel and also operating hour counter, switching operation counter and other advanced functionalities.

The two 1000 W dimming actuator modules can be switched in parallel.



### NEW PUSH BUTTONS WITH EXTERNAL TRANSCEIVER

Some Siemens push button series now offer the possibility of being connected to a transceiver instead of the usual BCU. This means that the application program is stored in the memory of the push button and not in the BCU. So, if you substitute one push button with a new one, the latter will work with its own application which can be different to the previous one, without the need of downloading the application again.



### NEW IP ROUTER

It is able to process telegrams much faster than its ancestor. It also allows 4 tunnelling connections (4 ETS can be connected simultaneously) and has object server functionality.


[www.somfy.es](http://www.somfy.es)


### SHUTTER ACTUATORS

Apart from the KNX shutter actuators 230VAC and 24VDC, there is an actuator to be used with Somfy's blind drives with encoder. With this encoder you always know the exact position of the shutter and the louvres (not with time calculations as standard KNX actuators)

The application is very complete in all versions and there is an additional RF module that allows control of the blinds and other KNX functions with the Somfy remote control.


[www.steinell.de](http://www.steinell.de)


### DUAL HIGH FREQUENCY PRESENCE DETECTOR

This dual HF ceiling presence detector is unique in the KNX market. On top of its optimized detection range for corridors (24 x 3 m), thanks to its implemented HD technology, it can "see" through obstacles such as columns, ceiling, etc. (so, you could even place it in hidden places).

11 0111//11 010110110101 ^1111 10101111111 101011010111  
101 01010 011111\*\*1 10101111111 101111101/110101111001



[www.t2m2.de](http://www.t2m2.de)

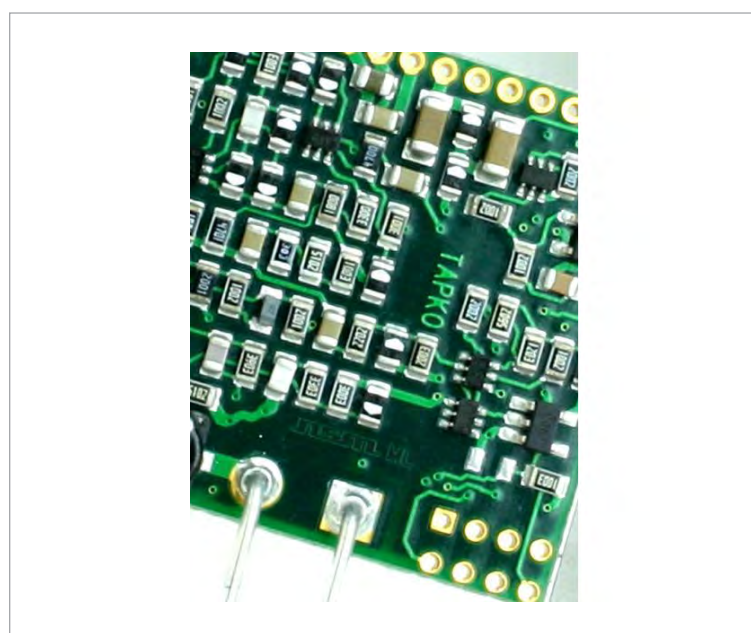


### TOUCH DISPLAYS

This manufacturer displayed his own range of touch displays, of different design and sizes, including wall mounting and desktop displays. They even have a smaller version which fits into the mounting box of the well known and obsolete MT701 model.

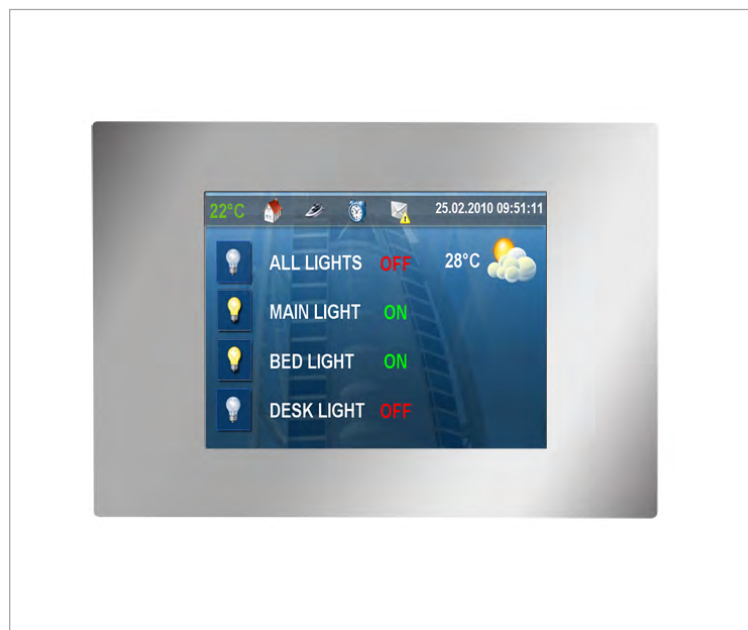


[www.tapko.de](http://www.tapko.de)



### DISCRETE TRANSCEIVER

Going on with their products for KNX hardware developers, Tapko has presented a revolutionary transceiver for KNX BCUs. With a really low price, it is also capable of supplying 40mA in 12VDC to the rest of the hardware.

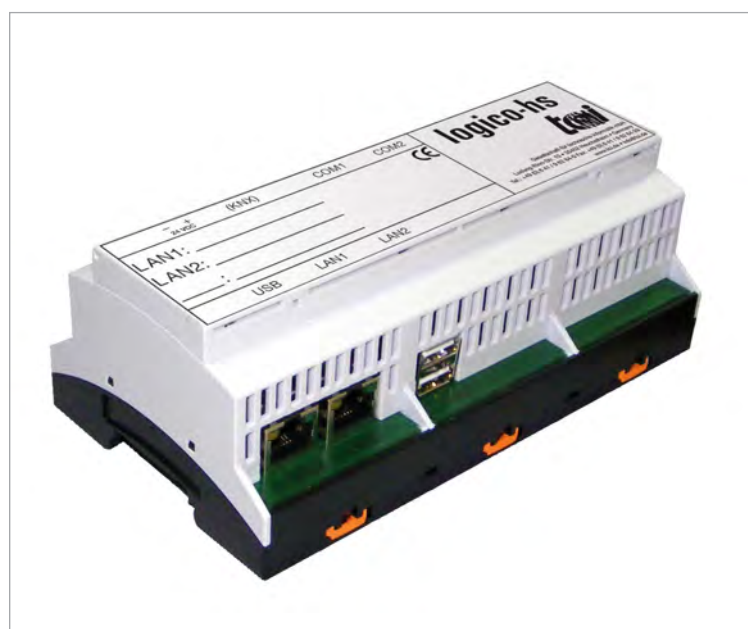
**tc**i[www.tci.de](http://www.tci.de)**AMENA**

Available in 3,5" and 7", these new touch displays can be powered via PoE. This means that with just one Ethernet cable you have all the connections required. Let us emphasize its low consumption.

Despite its reduced size, we are talking about a powerful touch display suitable for most applications. It meets the elegant TCI design standards with a competitive price.

**AMBIENTO MULTITOUCH**

The new generation of touch displays uses a revolutionary high-end LED display technology and incorporates multi-touch functionality. TCI keeps innovating and has presented one of the very first touch displays with these characteristics: the new ambiente. It also can be supplied via PoE.

**EMBEDED PCS**

TCI is now manufacturing not only quality touch displays, but also several embedded PCs from small DIN rail mounted, to 19" rack mounted PCs.

**theben**

[www.theben.de](http://www.theben.de)



### PlanoCentro PRESENCE DETECTOR

This ceiling mounted 360° Presence detector has an innovative, flat design thanks to a new mirror reflexion technology. Another distinctive feature is its detection range of 100m2.



### VARIA DISPLAY MULTIFUNCIÓN

The awarded (Reddot Design Award) white Varia Display is now also available in black colour. But there are other improvements regarding the navigations of the KNX functions (7 pages) and the temperature controller. It controls up to 8 rooms via own temperature profiles.



### MIX 2 SERIE ACTUATORS ACTUALIZATION

The existing Mix 1 Series, a modular system that allows the combination of different types of modules (on/off, shutter, dimming...) together, has now been improved.

With the Mix 2 Serie (compatible with Mix 1 extension modules), the BCU of the main modules can be easily extracted from the front plate, which allows the installation of the DIN rail devices prior to its commissioning.

Switching actuators have current measurement and two thresholds (a lower one for load failure detection and an upper one for overloads).

The connection between modules has also been improved.



**trivum** ⓘ[www.trivum.de](http://www.trivum.de)**MULTIROOM CONTROL**

Now you can control the Trivum multiroom system from KNX push buttons without the need of using the manufacturer's push-button and displays.

**V:KO**[www.viko.com.tr](http://www.viko.com.tr)**PUSH BUTTONS**

The Thea push button series from Viko was presented on the light+building fair with KNX BCU. Chic design, many different colours, frames (aluminium, wood, stainless steel, etc.) and buttons combinations available.

11 0111//11 010110110101 ^1111 10101111111 101011010111  
101 01010 011111\*\*1 10101111111 101111101/110101111001



[www.vocali.net](http://www.vocali.net)



### INVOX

This intelligent Voice recognition system (without the need of recording voice commands) for the control of KNX installations is now available in German language. Very easy to configure and to use (natural language). Can also be controlled from a Windows mobile and iPhone.



[www.warema.com](http://www.warema.com)



### SUN POWERED WEATHER STATION

Just place this new weather station on the facade of your building and you're done. No cable is needed because power is taken only from the sun and data is transmitted wirelessly to a RF receiver that transfers brightness and wind values to the KNX system.



Weinzierl Engineering GmbH

[www.weinzierl.de](http://www.weinzierl.de)


### IP BAOS 771 JSON

A modified version of the existing IP BAOS 770 gateway was presented by Weinzierl. In this case, Javascript Script Object Notation (JSON) functionality has been added. It allows the control of the gateway objects via http requests and multiple access connections simultaneously.

# WHD

[www.whd.de](http://www.whd.de)


### IPAD DOCKING STATION

Even though the iPad is not in the European shops yet, any visitor at the fair could see that it is going to play an important roll in the visualization of KNX systems, since there were a lot of Apple Apps to see. Audio manufacturer WHD presented an impressive docking station for the above mentioned iPad. It is for wall mounting and it can be rotated for portrait and landscape view. With integrated loudspeaker, volume control and battery charger.

11 0111//11 010110110101 ^1111 10101111111 101011010111  
101 01010 011111\*\*1 10101111111 101111101/110101111001

# WHD

[www.whd.de](http://www.whd.de)

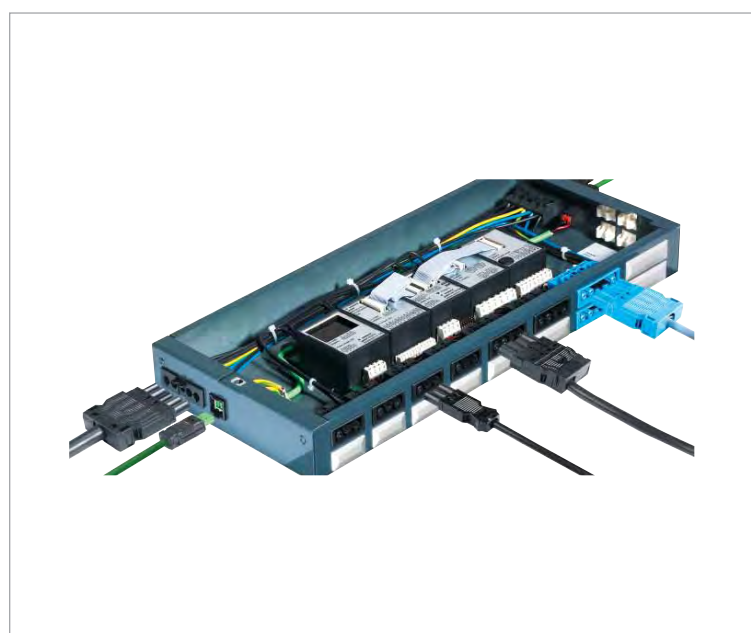


## DAM 4000

The offspring of the well known DAM 6000 has seen the light in the Frankfurt fair. With 4 sources (2 radios and 2 Cinch stereo inputs) and 8 sound zones the DAM 4000 can also be connected to KNX.

**wieland**

[www.wieland-electric.de](http://www.wieland-electric.de)



## GESIS RM SYSTEM

Wieland has reduced the size of their modular actuator series in order to make them suitable for their renowned floor mounting boxes with easy connection terminals.


[www.woertz.ch](http://www.woertz.ch)



### KNX TRIPSWITCH

At last a KNX tripswitch which fully integrates in your KNX systems. It can be rearmed remotely in case of failure. If the cause of the failure has not been removed and the problem persists, it will trip automatically again and send a telegram.


[www.zennio.com](http://www.zennio.com)


### MOVEMENT DETECTOR

Always looking for the most affordable solutions, Zennio has come up with a revolutionary movement detector. New about this product is that it is connected to one of the QUAD binary inputs (from where it also takes the power), so the price is highly reduced because a BCU is not needed. Up to two detectors can be connected to each input. Three different channels totally free configurable for movement, alarm, HVCA, etc. each one



www.zennio.com



### KLIC

After the success of the IR KNX interface for splits (IRSC), now Zennio releases a bidirectional gateway for domestic A/C Daikin units. Instead of working with IR commands, this new gateway is connected directly to the PCB of the indoor unit.



### SKX OPEN AND IRSC OPEN

Firstly developed for audio/video KNX integration, these devices also have a lot of great possibilities for integration in KNX of many kinds of devices. The IRSC-Open allows sending any standard IR command as a response to a KNX telegram. On the other hand, the SKX-Open is bidirectional and it allows the conversion of RS232 commands and KNX telegrams in both directions, with RS232 commands editable by the system integrator (open protocol).



### CAPACITIVE PUSH BUTTON / DISPLAY

Zennio's main attraction at the light+building 2010 were their two different new capacitive push buttons / displays:

- **ZAS:** 8 push buttons for direct functions and additional ones for menu navigation, a very intuitive info display with lots of possibilities, binary inputs, IR receiver, temperature sensor with PI regulation and a sensational presentation in a black glass-like design. With integrated BCU and for standard, single wall box mounting.
- **Z41:** the 4,1" touch display was only a prototype, but it gave us a glimpse into what is going to be the future of this manufacturer's top product line. Even though in the fair the display was presented with a lower resolution, the final version will have real colour (24bit).

And, of course, the best value for money.



[www.zublin.ch](http://www.zublin.ch)



### **PRESENCE DETECTOR**

Ceiling presence detector with 4 independent PIR sensors that can be individually activated via ETS parameters. This allows selecting among a big range of presence detection areas. Very complete application program with some very interesting advanced functions.

## L+B CATALOGUE

### Important notice · disclaimer:

1) This catalogue has been conceived as a collection of the most relevant NEW products / solutions for the KNX Standard exhibited for the first time during the light+building 2010 (Frankfurt Fair, 11th – 16th April). This means that the main selection criteria has been their NOVELTY and therefore a large number of interesting, popular or significant KNX devices has been left out since they were already known to the public prior to the fair.

2) The information and technical data contained in this catalogue has been obtained directly at the manufacturer's booths during the light+building 2010 and, in most cases, verbally transmitted by their commercial agents.

In the case of manufacturers exhibiting KNX devices in the prototype stage, the technical specifications might still be changed, sometimes significantly, in the course of the certification / release process.

For this reason, Futurasmus KNX Group expressly rejects any responsibility for any possible mistakes, inaccuracies and/or omissions the document might contain.

Please, contact us at [l+b2010@futurasmus-knxgroup.org](mailto:l+b2010@futurasmus-knxgroup.org) for any rectifications, additional information or other suggestions regarding this catalogue.

3) No list prices or release dates have been included in the catalogue, since in many cases this information was not available at the fair. But, if you are interested in any of these products, do not hesitate to contact us at [support@futurasmus-knxgroup.com](mailto:support@futurasmus-knxgroup.com) for more information.



/11 010110110101 ^1111 10101111111 101011010

101 01010 011111\*\*1 10101111111 101111101/1101011110

This catalogue and its content is copyright of Futurasmus KNX Group · © Futurasmus KNX Group 2010. All rights reserved.

All products and company names reproduced in this catalogue which are not the property of or licensed to Futurasmus KNX Group are acknowledged as trademarks of their respective owners.

01010110



11 101010



**futurasmus**  
KNX GROUP

**Futurasmus KNX Group International**  
☎ +44 (0) 20 81444272  
🌐 [www.futurasmus-knxgroup.com](http://www.futurasmus-knxgroup.com)

**Futurasmus KNX Group Deutschland**  
☎ +49 (0) 6201 3899008  
🌐 [www.futurasmus-knxgroup.de](http://www.futurasmus-knxgroup.de)

**Futurasmus KNX Group España**  
☎ +34 965 959511  
🌐 [www.futurasmus-knxgroup.es](http://www.futurasmus-knxgroup.es)