



15 YEARS EXCLUSIVELY DEDICATED TO THE KNX STANDARD

KNX DEVICES
CATALOGUE
2017

THE BEST SELECTION OF KNX PRODUCTS

Futurasmus, S.L. is not responsible for the accuracy, nor for errors of any nature or omissions regarding the content of this catalogue. All information must be checked upon in our web site or with our technical or commercial staff. Furthermore, Futurasmus, S.L.reserves the right at any time to correct the content of the digital version of this catalogue and in future editions. All logos, images and trade marks belonging to third parts have been used with due regard to the rights of their lawful holders.

KNX DEVICES CATALOGUE 2017

INDEX

- 04 KNX POWER SUPPLIES**
MDT · LINGG&JANKE · IPAS
- 06 TP LINE/AREA COUPLERS · KNX BUS CABLE**
MDT · LINGG&JANKE · APRICUM · FABRICANTE CABLE BUS
- 08 PROGRAMMING DEVICES**
ARCUS · APRICUM · IPAS · WEINZIERL
- 10 ACTUATORS**
IPAS · INTERRA · LINGG&JANKE · MDT
- 14 UNIVERSAL DIMMING ACTUATORS**
BES · DINUY · MDT · LINGG&JANKE
- 16 INPUTS**
MDT · INTERRA · LINGG&JANKE · ARCUS
- 18 DETECTORS**
BES · MDT · ZUBLIN · STEINEL
- 20 SENSORS**
ARCUS · ELSNER · BMS
- 40 SMART METERING**
LINGG&JANKE · ARCUS
- 44 VISUALIZATION**
IPAS · IDDERO · INTERRA · HOUSEINHAND · TCI
- 56 GATEWAYS - HVAC, LON, BACNET, MODBUS AND ENOCEAN**
INTESIS
- 58 ROOM CONTROLLERS**
IDDERO · ARCUS · ELSNER · INTERRA · MDT · TENSE
- 62 PUSH BUTTONS**
MDT · LINGG&JANKE · EKINEX · INTERRA · TENSE · DAKANIMO · GEPRO
IDDERO · ARCUS · ELSNER

KNX POWER SUPPLIES



MDT

160, 320, 640, 960 and 1280mA KNX power supplies. Note the uninterrupted KNX power supply: thanks to its two independent power supplies, offers high reliability (in case one of them fails).



LINGG&JANKE

160, 320 and 640mA KNX power supplies, all of them with auxiliary unfiltered output and status LEDs to indicate operation modus: normal, overload or reset.



IPAS

Very small KNX 640mA power supply (only 3 DIN rail units). It has an auxiliary unfiltered output and 3 status LEDs to indicate operation modus: normal, overload or reset.

KNX POWER SUPPLY

Web Code	Reference	Maximum Current	Additional 29VDC Output	Supply Voltage	Diagnostic Functions	Redundant	Size	Listprice	G.D.
17105	31320-20-03	640mA	YES	230VAC/50-60HZ	NO	NO	3U	219	9
10149	STV-0160.01	160mA	24VDC 1.5A power supply included	230VAC/50HZ	NO	NO	4U+4U	125	7
9753	STV-0320.01	320mA	NO	230VAC/50HZ	NO	NO	4U	184	7
17169	STV-0640.02	640mA	YES	230VAC/50HZ	NO	NO	4U	249	7
16998	STC-0640.01	640mA	YES	230VAC/50HZ	YES	NO	4U	308	7
17160	STR-0640.01	640mA	YES	230VAC/50HZ	YES	YES	6U	368	7
17107	STC-0960.01	960mA	YES	230VAC/50HZ	YES	NO	6U	358	7
17108	STC-1280.01	1280mA	YES	230VAC/50HZ	YES	NO	6U	398	7
10130	NT160-42	160mA	YES	110-240VAC/50-60HZ	NO	NO	4U	150	7
10131	NT320-42	320mA	YES	110-240VAC/50-60HZ	NO	NO	4U	170	7
10132	NT640-62	640mA	YES	110-240VAC/50-60HZ	NO	NO	4U	220	7

TP LINE/AREA COUPLERS • KNX BUS CABLE



MDT

It can be used as either line- or area coupler. With status LEDs and manual mode, that can be activated to temporarily modify the configuration of the filter table during the commissioning and diagnosis phase (without having to reprogram the coupler).



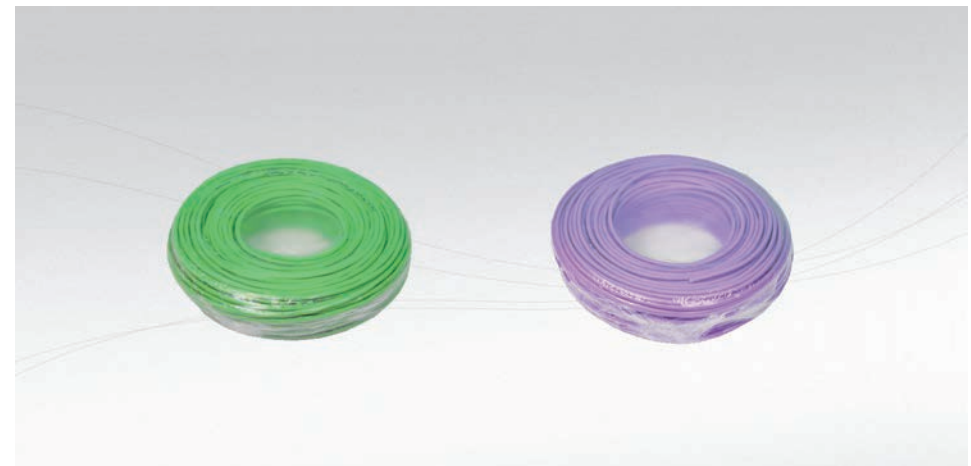
LINGG&JANKE

It can be used as either line- or area coupler. With status LEDs to test the proper operation of the coupler.



APRICUM

It can be used as either line- or area coupler. With status LED and manual mode, that can be activated to temporarily modify the configuration of the filter table during the commissioning and diagnosis phase (without having to reprogram the coupler).



BUS CABLE MANUFACTURER:

Single pair- (red/black) or two pairs KNX bus cable (red/black and yellow/white) with halogen-free or PVC sheath. Also available with 750V insulation.

TP LINE/AREA COUPLERS

Web Code	Reference	Manual control	Size	Listprice	G.D.
10462	SCN-LK001.01	YES	2U	249	5
4387	88502	NO	2U	249	7
16255	MECtp Interface	YES	2U	235	8

KNX BUS CABLE

Web Code	Reference	Pairs	Type	750V insulation	Listprice	G.D.
9958	cb1lh	1	HALOGEN FREE	NO	70.20	7
9960	cb1lh750	1	HALOGEN FREE	YES	75	7
9959	cb2lh	2	HALOGEN FREE	NO	79.5	7
9961	cb2lh750	2	HALOGEN FREE	YES	98.8	7

PROGRAMMING DEVICES



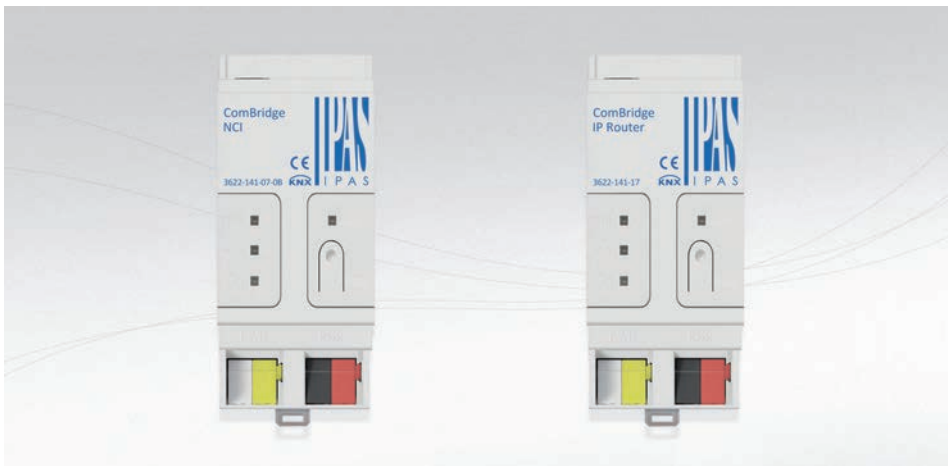
ARCUS

This router has both the functionality of KNXnet/IP Routing and KNXnet/IP Tunnelling connection. We can highlight the following features: group monitor via HTML, bus monitor, NTP time server, data logging in SD card and possibility to generate charts with the registered data, SSL to secure SSH/SFTP, etc.



APRICUM

The USB programmer facilitates the bidirectional communication between the PC and the KNX TP bus. This device stands out for its great price-quality ratio.



IPAS

Both the KNX IP programmer (NCI) and the IP Router are equipped with an integrated web server for diagnostic functions (to show sent and received telegrams, connections used, etc.); up to 5 simultaneous Tunnelling KNXnet/IP connections and 1 KNXnet/IP Object Server connection are allowed.



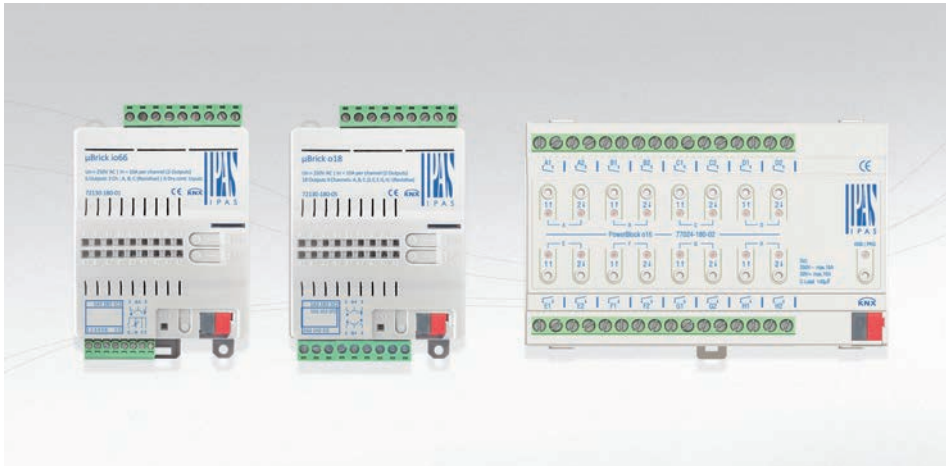
WEINZIERL

Let us single out the USB programmer in stick format and also the DIN rail version, sized only 1 Unit. Also, their product range includes an RS.232 programmer and gateways with KNXnet/IP Routing or KNXnet/IP Tunnelling y Object Server functionality.

PROGRAMMING DEVICES

Web Code	Reference	Interface	Router IP	Advanced Functions	Size	Listprice	G.D.
17255	40400002	IP	YES	YES	2U	365	7
16254	UIM-KNX 42	USB	NO	NO	2U	165	8
14922	3622-141-18	IP	NO	YES	2U	209	9
14921	3622-141-17	IP	YES	YES	2U	398	9
12718	5122	RS-232	NO	NO	1U	190	7
15907	5117	USB	NO	NO	1U	190	7
11336	5123	USB	NO	NO	Stick	178	7
8746	5003	IP	NO	NO	2U	199	7
8747	5004	IP	YES	NO	2U	420	7
9167	5011	IP-WLAN	NO	NO	125x67x31mm	480	7

ACTUATORS



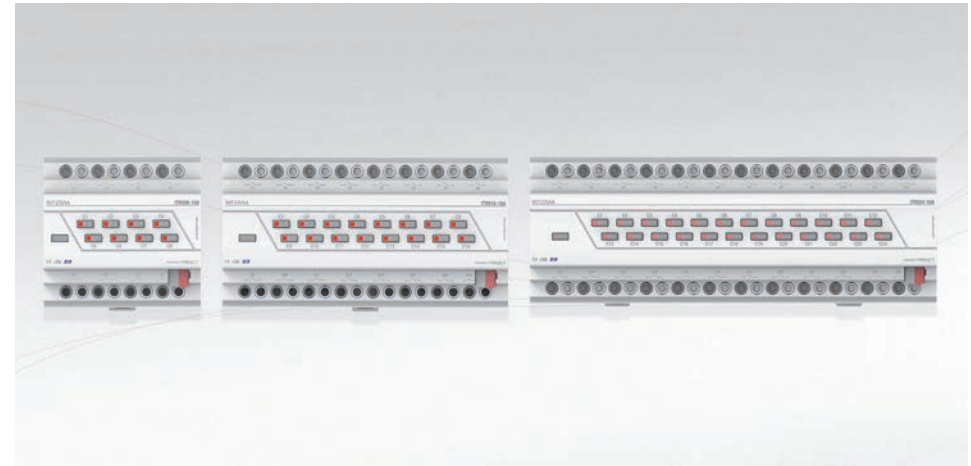
IPAS

This manufacturer offers 2 ranges of multi-function actuators: the μ Bricks, specially designed for decentralized systems (since they can be installed in electric cabinets or mounted on DIN rail) and the PowerBlocks, for DIN rail-mounted, centralized systems. Very advanced application program, including logic, timers, blocking functions, etc.



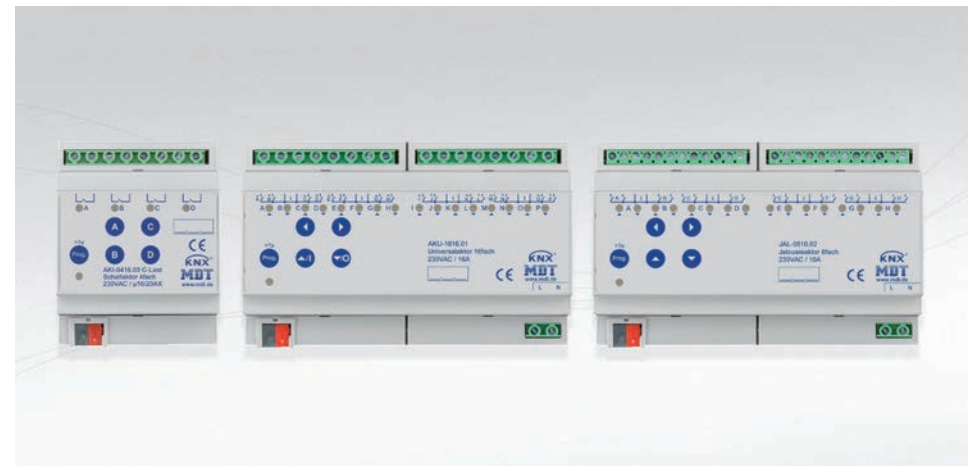
LINGG&JANKE

The ECO+ actuator range for DIN-rail mounting in centralized systems has now been improved and includes manual control for the same price.



INTERRA

Complete range of multi-function actuators for DIN rail-mounting in centralized systems. Apart from allowing control of 230VAC blinds/shutters and ON/OFF functions, they include fan coil and 24VDC blind/shutter control.



MDT

Complete actuator range both for DIN rail mounting and installation in wall boxes. As it happens with the rest of MDT devices, buttons for manual control have been improved. The same as all the MDT products, they have a 3-year warranty.

ACTUATORS

Web Code	Reference	Multi-function	Outputs	On/Off*	Blind*	Fan Coil*	I(A)	C-Load	Channelsper Phase	Measureme NT	Inputs	Size	Listprice	G.D.
14908	72130-180-01	YES	6	6	3	-	10	NO	2	NO	6	4U/Flush-mount	253	9
14910	72130-180-03	YES	6	6	3	-	10	4xNo / 2x140µF	2	NO	6	4U/Flush-mount	298	9
14909	72130-180-02	YES	8	8	4	-	10	NO	2	NO	NO	4U/Flush-mount	253	9
17296	77024-180-01	YES	8	8	4	-	16	140µF	1	NO	NO	4U	270	9
14911	72130-180-04	YES	12	12	6	-	10	8xNo / 4x140µF	2	NO	NO	4U/Flush-mount	343	9
17297	77024-180-02	YES	16	16	8	-	16	140µF	1	NO	NO	4U/Flush-mount	397	9
14912	72130-180-05	YES	18	18	9	-	10	NO	2	NO	NO	4U	398	9
17171	ITR504-16A-01	YES	4	4	2	1	16	200µF	1	NO	NO	6U	150	7
17172	ITR508-16A-02	YES	8	8	4	1	16	200µF	1	NO	NO	6U	250	7
17173	ITR512-16A-02	YES	12	12	6	2	16	200µF	1	NO	NO	10U	300	7
17174	ITR516-16A-01	YES	16	16	8	3	16	200µF	1	NO	NO	10U	350	7
17175	ITR520-16A-01	YES	20	20	10	3	16	200µF	1	NO	NO	15U	380	7
17176	ITR524-16A-01	YES	24	24	12	4	16	200µF	1	NO	NO	15U	410	7
17423	A2F16H-E	NO	2	2	-	-	16	200µF	1	NO	NO	3U	115	7
17429	J2F6H-E	NO	2	-	2	-	6	NO	1	NO	NO	3U	140	7
17424	A4F16H-E	NO	4	4	-	-	16	200µF	1	NO	NO	4U	136	7
17430	J4F6H-E	NO	4	-	4	-	6	NO	1	NO	NO	4U	188	7
17433	BEA4FK16H-E	NO	4	4	-	-	16	200µF	1	NO	YES	6U	158	7
17436	BEA4F230H-E	NO	4	4	-	-	16	200µF	1	NO	4 x 230VAC	6U	158	7
17425	A6F16H-E	NO	6	8	-	-	16	200µF	1	NO	NO	6U	174	7
17431	J6F6H-E	NO	6	-	6	-	6	NO	1	NO	NO	6U	241	7
17437	BEA8FK16H-E	NO	8	8	-	-	16	200µF	1	NO	8	9U	245	7
17438	BEA8F230H-E	NO	8	8	-	-	16	200µF	1	NO	8 x 230VAC	9U	245	7
17426	A9F16H-E	NO	9	9	-	-	16	200µF	1	NO	NO	9U	199	7
17432	J2x6F6H-E	NO	12	-	12	-	6	NO	1	NO	NO	12U	398	7
17161	JAL-01UP.02	NO	1	-	1	-	6	NO	1	NO	NO	Wall box	99	7
16056	AZI-0316.01	NO	3	3	-	-	20	200µF	1	Power	NO	4U	280	7
17163	JAL-0410.02	NO	4	-	4	-	10	NO	2	NO	NO	4U	238	7

These columns indicate the maximum number of each function. The functions in multifunction actuators are combinable. Example: A multifunction actuator with 4 outputs can be used for (4 x On / Off) or (2 x Shutters) or (1 x Shutter and 2 x On / Off).

ACTUATORS

Web Code	Reference	Multi-function	Outputs	On/Off*	Blind*	Fan Coil*	I(A)	C-Load	Channelsper Phase	Measureme NT	Inputs	Size	Listprice	G.D.
17165	JAL-0410D.02	NO	4	-	4	-	8	24VDC	2	NO	NO	4U	241	7
16057	AZI-0616.01	NO	6	6	-	-	20	200µF	1	Power	NO	8U	388	7
17154	AKS-0816.03	NO	8	8	-	-	16	140µF	1	NO	NO	6U	325	7
17148	AKI-0816.03	NO	8	8	-	-	20	200µF	1	NO	NO	8U	347	7
17158	AMS-0816.02	NO	8	8	-	-	16	140µF	1	Current	NO	8U	362	7
17151	AMI-0816.02	NO	8	8	-	-	20	200µF	1	Current	NO	8U	388	7
17164	JAL-0810.02	NO	8	-	8	-	10	NO	2	NO	NO	8U	355	7
17166	JAL-0810D.02	NO	8	-	8	-	8	24VDC	2	NO	NO	8U	358	7
17155	AKS-1216.03	NO	12	12	-	-	16	140µF	1	NO	NO	8U	392	7
17149	AKI-1216.03	NO	12	12	-	-	20	200µF	1	NO	NO	12U	416	7
17159	AMS-1216.02	NO	12	12	-	-	16	140µF	1	Current	NO	12U	446	7
17152	AMI-1216.02	NO	12	12	-	-	20	200µF	1	Current	NO	12U	470	7
17156	AKS-2016.03	NO	20	20	-	-	16	140µF	1	NO	NO	12U	552	7
17152	AMI-1216.02	NO	12	12	-	-	20	200µF	1	Current	NO	12U	470	7
17156	AKS-2016.03	NO	20	20	-	-	16	140µF	1	NO	NO	12U	552	7

These columns indicate the maximum number of each function. The functions in multifunction actuators are combinable. Example: A multifunction actuator with 4 outputs can be used for (4 x On / Off) or (2 x Shutters) or (1 x Shutter and 2 x On / Off).

Futurasmus KNX Group is currently selling to over 60 countries in the world
We have offices in **Spain, Germany, Southern Africa, Middle East and China..**



Futurasmus KNX GROUP ESPAÑA

C/ de la Nit. 1, Bloque 7, Local 1
03110 Mutxamel (Alicante)
T: +34 965959511
F: +34 965959172
E: info@futurasmus-knxgroup.es
www.futurasmus-knxgroup.es

Futurasmus GmbH KNX GROUP

Audifaxstr. 7
75315 · Radolfzell · GERMANY
T: +49 7732 802975
F: +49 7732 802974
E: info@futurasmus-knxgroup.de
www.futurasmus-knxgroup.de

Futurasmus KNX GROUP CHINA

Room 1-1503 · No.13a
Beiyuan Road · Chaoyang Disctrict
Beijing · P. R. CHINA
T: +86 10 6025 8878
E: info@futurasmus-knxgroup.cn
www.futurasmus-knxgroup.cn

Futurasmus KNX GROUP BAHRAIN

P.O.Box 511 · Manama · Al Rossais Tower
Off. 12· Bl. 283 · Rd 1704 · Dipl. Area 317 · BAHRAIN
T: +973 39948072
F: +973 17910334
E: info@futurasmus-me.com
www.futurasmus-me.com

Futurasmus KNX GROUP SOUTH AFRICA

86 Marine Drive · Paarden Eiland
7405 · Cape Town (W-Cape) · SOUTH AFRICA
T: +27 (0) 879437190
E: info@futurasmus-knxgroup.co.za
www.futurasmus-knxgroup.co.za

UNIVERSAL DIMMING ACTUATORS



BES



For dimming incandescent, halogen (standard or electronic transformer), low consumption lamps. A special range designed for optimal LED regulation at 230VAC and avoid the blinking derived from dimming is available.



MDT



For dimming incandescent, halogen (standard or electronic transformer), low consumption lamps and LED at 230VAC with only 4W (minimum consumption needed for operation). A different version is also available for 1 - 10 V ballasts.



DINUY



For dimming incandescent, halogen (standard or electronic transformer), low consumption lamps and LED at 230VAC (with great dimming quality).



LINGG&JANKE



For dimming incandescent, halogen (standard or electronic transformer) and low consumption lamps. Their catalogue includes a dimmer specially designed for the regulation of LED lamps at 230VAC, which allows for a more precise dimming through selectors.

UNIVERSAL DIMMING ACTUATORS

Web Code	Reference	No. Of Channels	I(A)	Load Type	Size	Listprice	G.D.
14955	RKLED500	1	500W	Universal/LED	4U	134	6
14553	RK1000	1	1000W	Universal	4U	120	6
14954	RKLED1000	1	1000W	Universal/LED	4U	149	6
14626	RK2000	1	2000W	Universal	4U	156	6
14654	RKLED2x400	2	400W	Universal/LED	4U	142	6
14627	RK3X500	3	500W	Universal	4U	128	6
16247	RE KNT 000	1	1000W	Universal/LED	5U	220	7
10249	AKD-0103.01	1	600W	Universal	4U	290	7
10140	AKD-0201.01	2	250W	Universal	4U	310	7
10250	AKD-0203.01	2	600W	Universal	8U	380	7
10141	AKD-0401.01	4	250W	Universal	8U	410	7
9154	DIM2FU-IP-OH	2	570W	Universal	6U	400	7
9168	DIM4FU300-IP-OH	4	300W	Universal	12U	485	7
11749	DIM4FU-2-FW	4	570W	Universal	12U	565	7

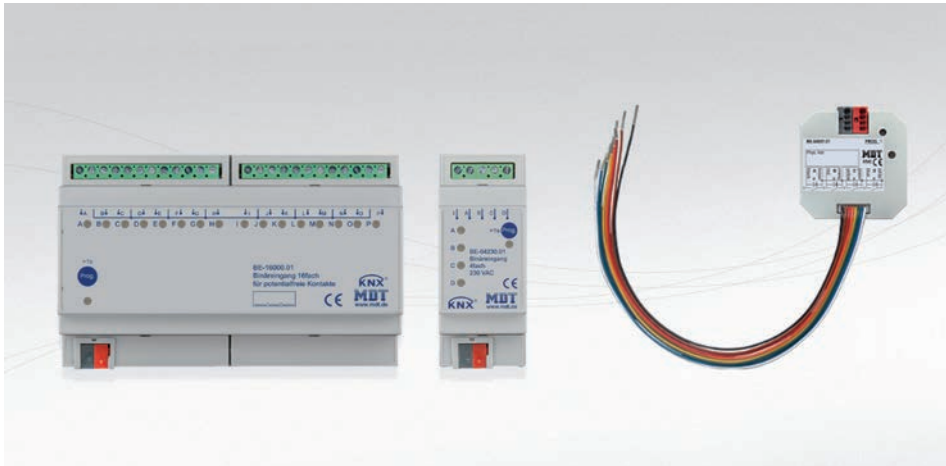
DIMMING ACTUATORS 1-10V

Web Code	Reference	No. Of Channels	Ax. Ecg	Load Type	Size	Listprice	G.D.
16252	RE KNT 110	1	200	1-10V	5U	208,5	7
14553	AKD-0103.01	1	30	1-10V	4U	290	7

LED DIMMER ACTUATORS

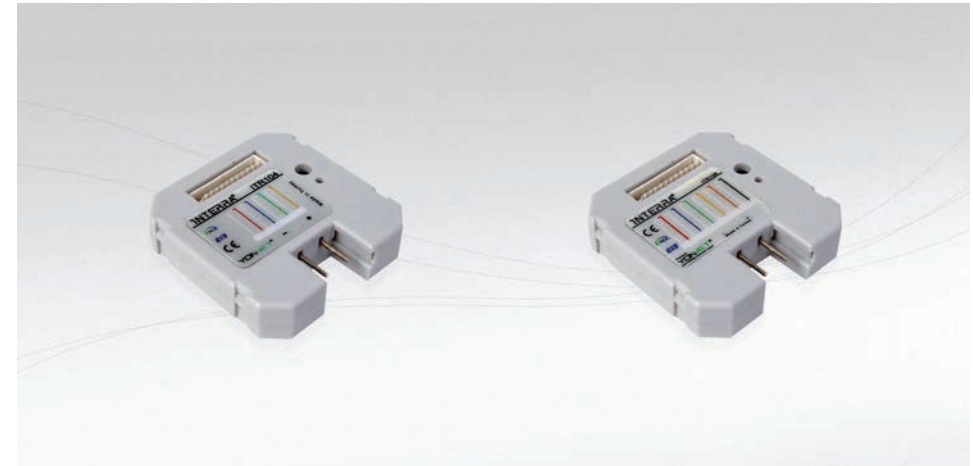
Web Code	Reference	No. Of Channels	I(A)	Load Type	Size	Relays	Listprice	G.D.
14621	RGBL-K	3	3A	LED, Voltaje constante 12/24VDC	77x35x17mm	0	98	6
17109	RGBWL-K	4	3A	LED, Voltaje constante 12/24VDC	77x35x17mm	0	140	6
13832	AKD-0224V.01	2	3A	LED, Voltaje constante 12/24VDC	46x25x113mm	1	138	5
14063	AKD-0324V.01	3	3A	LED, Voltaje constante 12/24VDC	46x25x113mm	1	188	5
14064	AKD-0424V.01	4	4A/8A	LED, Voltaje constante 12/24VDC	4U	1	208	5
16926	AKD-0424R.01	4	3A	LED, Voltaje constante 12/24VDC	46x25x113mm	1	218	5

INPUTS



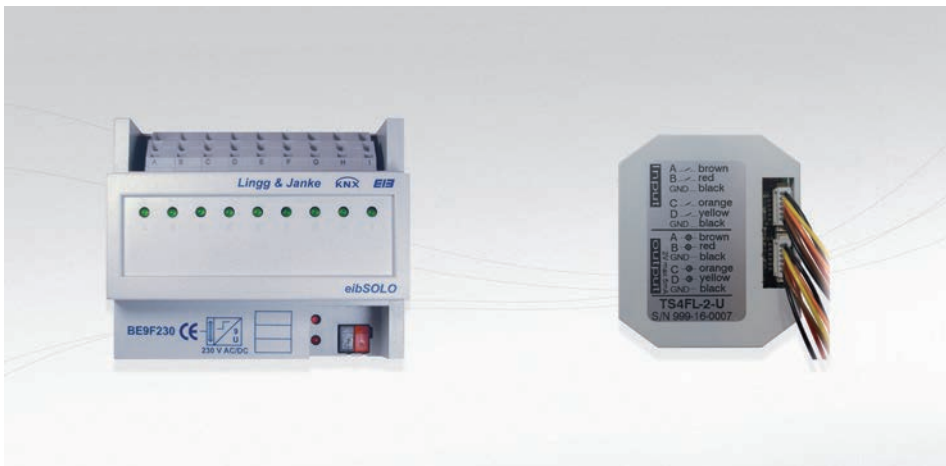
MDT

Complete range of potential-free inputs for DIN-rail or in-wall mounting, as well as 230VAC, 12-24VDC, 24VAC or analogue 0-12V/2-10V, 0-20mA/4-20mA inputs.



INTERRA

Push button interface with 2, 4 or 6 inputs and great quality-price ratio.



LINGG&JANKE

Extensive selection of potential-free inputs for DIN-rail or in-wall mounting, as well as 230VAC, 8 – 48VDC inputs. Moreover, their catalogue includes a push button interface that gives great value-for-money.



ARCUS

Analogue input for flush mounting that includes two 0-12VDC inputs.

INPUTS

Web Code	Reference	No. Of Inputs	Type	Size	Listprice	G.D.
9739	BE-02001.01	2	Universal push button interface	41x41x12mm	49	7
9743	BE-04001.01	4	Universal push button interface	41x41x12mm	68	7
11521	BE-06001.01	6	Universal push button interface	41x41x12mm	88	7
11518	BE-04000.01	4	Potential-free	2U	168	7
9745	BE-08000.01	8	Potential-free	4U	228	7
9748	BE-16000.01	16	Potential-free	8U	348	7
11519	BE-04024.01	4	12-24VDC / 24VAC	2U	168	7
9746	BE-08024.01	8	12-24VDC / 24VAC	4U	228	7
9749	BE-16024.01	16	12-24VDC / 24VAC	8U	348	7
17106	BE-02230.01	2	230VAC	41x41x12mm	88	7
11520	BE-04230.01	4	230VAC	2U	168	7
9747	BE-08230.01	8	230VAC	4U	228	7
9750	BE-16230.01	16	230VAC	8U	348	7
16746	AIO-0210V.01	2	Analogue 0-12V/2-10V, 0-20mA/4-20mA	41x41x12mm	118	5
16747	AIO-0410V.01	4	Analogue 0-12V/2-10V, 0-20mA/4-20mA	41x41x12mm	158	5
17178	ITR102	2	Universal push button interface	40x40x10mm	45	7
17179	ITR104	4	Universal push button interface	40x40x10mm	54	7
17180	ITR106	6	Universal push button interface	40x40x10mm	64	7
17299	TS4F-2-U	4	Universal push button interface	41x41x12mm	52	7
17300	TS8F-2-U	8	Universal push button interface	41x41x12mm	62	7
4365	BE9FK	9	Potential-free	6U	205	7
4364	BE9F24	9	8 - 48VDC	6U	205	7
5668	BE9F230	9	230VAC	6U	205	7
14795	SK08-AN2	2	Analogue 0-12V	115x65x55mm	169	7

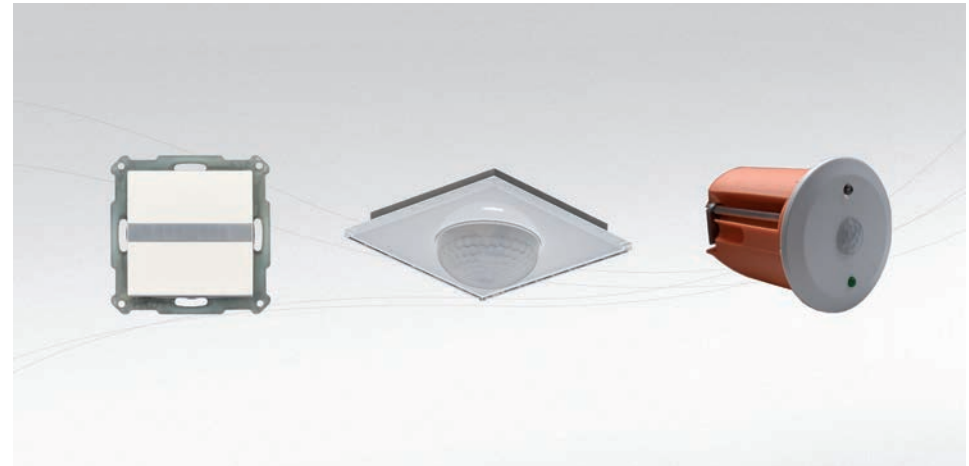
DETECTORS



BES



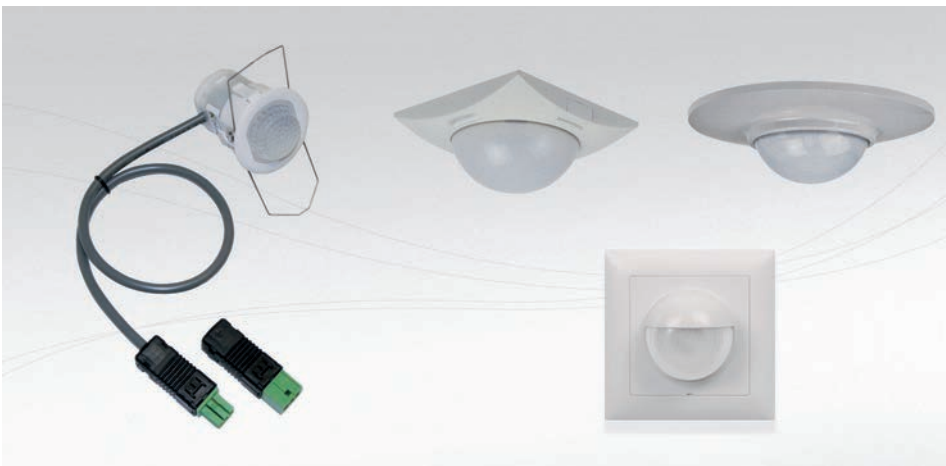
This brand offers a series of infra red presence detectors, which stand out for being very small for ceiling installation. On top of that, they include a radio frequency detector for concealed mounting.



MDT



Infra red detectors for fitted installation in ceilings or wall mounting. Let us highlight their detector finished in glass. All their detectors are equipped with brightness sensor.



ZUBLIN



Infra red detectors for fitted installation in ceilings or walls, or else flush mounting. All their detectors are equipped with brightness sensor.



STEINEL



Among their main detectors, it is worth mentioning their IP45 outdoors detector, as well as their high frequency detector (specially designed for installation in corridors).

DETECTORS

Web Code	Reference	Sensor Type	Detection Range (X m. Height)	Brightness Sensor	Constant Regulation	IP Rating	Mounting	Finishing	Size	Colour	Listprice	G.D.
14679	510000	1 pyroelectric	Mov. Ø5m a 2,5m	YES	NO	IP20	Flush-mount, ceiling	Plastic	Ø36mm	White	72	6
14681	530000	1 pyroelectric	Mov. Ø5m a 2,5m	YES	YES	IP20	Flush-mount, ceiling	Plastic	Ø36mm	White	98	6
14680	570000	Radio frequency	Mov. 12 x 6m a 2,5m	NO	NO	IP20	Hidden	Plastic	-	Blue	99	6
12604	SCN-P360D1.01	1 pyroelectric	(Mov. Ø6m, Presen. Ø4m) a 3m	YES	NO	IP20	Flush-mount, wall	Plastic	Ø43mm	White	118	7
17338	SCN-BWM55.01	2 pyroelectric	(Mov. 6 - 10m) a 1,1m	YES	NO	IP20	Flush-mount, wall	Glass	92x92x32mm	White	124	7
17339	SCN-BWM55.G1	2 pyroelectric	(Mov. 6 - 10m) a 1,1m	YES	NO	IP20	Flush-mount, wall	Glass	92x92x32mm	White	128	7
12715	SCN-P360K3.01	3 pyroelectric	(Mov. Ø11m, Presen. Ø5m) a 3m	YES	YES	IP20	Flush-mount, wall	Plastic	75x75x35mm	White	148	7
12605	SCN-P360D3.01	3 pyroelectric	(Mov. Ø11m, Presen. Ø5m) a 3m	YES	NO	IP20	Flush-mount, wall	Plastic	75x75x35mm	White	128	7
15374	SCN-G360K3.01	3 pyroelectric	(Mov. Ø11m, Presen. Ø5m) a 3m	YES	YES	IP20	Flush-mount, wall	Glass	92x92x32mm	White	178	7
15375	SCN-G360D3.01	3 pyroelectric	(Mov. Ø11m, Presen. Ø5m) a 3m	YES	NO	IP20	Flush-mount, wall	Glass	92x92x32mm	White	158	7
12389	SCN-P360K4.01	4 pyroelectric	(Mov. Ø16m, Presen. Ø8m) a 3m	YES	YES	IP20	Flush-mount, wall	Plastic	85x85x38mm	White	168	7
12716	SCN-P360D4.01	4 pyroelectric	(Mov. Ø16m, Presen. Ø8m) a 3m	YES	NO	IP20	Flush-mount, wall	Plastic	85x85x38mm	White	148	7
11041	25010	2 pyroelectric	(Mov. 14x5m) a 3m	YES	YES	IP20	Flush-mount, wall	Plastic	Ø44mm	White	200	9
11039	25032	3 pyroelectric	(Mov. Ø14m, Presen. Ø6m) a 3m	YES	YES	IP20	Flush-mount, wall	Plastic	Ø105mm	White	185	9
11040	25033	3 pyroelectric	(Mov. Ø14m, Presen. Ø6m) a 3m	YES	YES	IP20	Flush-mount, wall	Plastic	86x86mm	White	185	9
11037	25036	3 pyroelectric	(Mov. Ø26m, Presen. Ø7m) a 3m	YES	YES	IP20	Flush-mount, wall	Plastic	Ø105mm	White	200	9
11038	25037	3 pyroelectric	(Mov. Ø26m, Presen. Ø7m) a 3m	YES	YES	IP20	Flush-mount, wall	Plastic	86x86mm	White	200	9
10629	25240	3 pyroelectric	(Mov. Ø6m, Presen. Ø2m) a 1,1m	YES	YES	IP20	Flush-mount, wall	Plastic	80x80x32mm	White	200	9
10630	25241	3 pyroelectric	(Mov. Ø6m, Presen. Ø2m) a 1,1m	YES	YES	IP55	Flush-mount, wall	Plastic	86x86x43mm	White	250	9
10631	25245	3 pyroelectric	(Mov. Ø6m, Presen. Ø2m) a 1,1m	YES	YES	IP55	Flush-mount, wall	Plastic	86x86x43mm	Black	250	9
10632	25246	3 pyroelectric	(Mov. Ø6m, Presen. Ø2m) a 1,1m	YES	YES	IP55	Flush-mount, wall	Plastic	86x86x43mm	Grey	250	9
10633	25242	3 pyroelectric	(Mov. Ø6m, Presen. Ø2m) a 1,1m	YES	YES	IP55	Surface, wall	Plastic	86x86x84mm	White	260	9
10634	25248	3 pyroelectric	(Mov. Ø6m, Presen. Ø2m) a 1,1m	YES	YES	IP55	Surface, wall	Plastic	86x86x84mm	Black	260	9
10635	25249	3 pyroelectric	(Mov. Ø6m, Presen. Ø2m) a 1,1m	YES	YES	IP55	Surface, wall	Plastic	86x86x84mm	Grey	260	9
15883	004064	4 pyroelectric	(Mov. Ø20m) a 2m	YES	NO	IP54	Surface, wall	Plastic	114x74x128 mm	White	200,45	7
15882	004057	4 pyroelectric	(Mov. Ø20m) a 2m	YES	NO	IP54	Surface, wall	Plastic	114x74x128 mm	Black	200,45	7
15884	004040	4 pyroelectric	(Mov. Ø20m) a 2m	YES	NO	IP54	Surface, wall	Plastic	114x74x128 mm	Silver	200,45	7
15376	593711	4 pyroelectric	(Presen. 4x4m) a 2,8m	YES	YES	IP20	Flush-mount, ceiling	Plastic	77x77x60mm	White	200,45	7
15926	002992	High frequency	(Presen. 3x10m) a 2,8m	YES	YES	IP20	Flush-mount, ceiling	Plastic	120x120x75mm	White	216,39	7

SENSORS

T-Objekt-UP Temperature sensor for flush-mount blind cover

Elsner



- Temperature measurement
- 4 configurable temperature thresholds.
- Sending of minimum and maximum registered temperature values.
- PI thermostat for cooling and heating, PI or 2 point regulation for additional cooling and additional heating.
- For flush-mount installation, hidden under blind cover.
- Measuring range: -40 ... +80° C

Web code	Reference
8140	70178

SK03-T Temperature sensor, flush-mount

Arcus



- Temperature measurement
- Upper temperature threshold
- Sending of minimum and maximum registered temperature values.
- 2 point, PI and PWM thermostats for cooling and heating
- Fits 55x55mm frames.
- Measuring range: -25 ... +55° C

Web code	Reference	Colour
6075	30103201	White
6076	30103202	Black

KNX T-UP Temperature sensor, flush-mount, with optional push buttons and display

Elsner



- Temperature measurement
- 3 configurable temperature thresholds.
- Sending of minimum and maximum registered temperature values.
- PI thermostat for cooling and heating, PI or 2 point regulation for additional cooling and additional heating.
- 2 PI (%) value comparators to calculate average and maximum or minimum values of up to 5 inputs.
- The models fitted with display can show up to 3 information lines.



- The models fitted with push buttons allow manual set-point temperature changes.
- Fits 55x55mm frames.
- Measuring range: -40 ... +80° C

Web code	Reference	Display	Buttons	Colour
14642	70350	NO	NO	White
14643	70351	NO	NO	Aluminium
14644	70352	NO	NO	Anthracite
14645	70353	NO	NO	Stainless Steel
15822	70354	YES	NO	White
15823	70355	YES	NO	Aluminium
15824	70356	YES	NO	Anthracite
15825	70357	YES	NO	Stainless Steel
15826	70358	YES	YES	White
15827	70359	YES	YES	Aluminium
15828	70360	YES	YES	Anthracite
15829	70361	YES	YES	Stainless Steel

SK30-TC Temperature sensor, flush-mount, with push buttons or rotary control

Arcus



- Temperature measurement
- Setting of temperature limits
- Sending of minimum and maximum registered temperature values.
- 2 point, PI and PWM thermostat
- Setpoint temp. variation via front buttons and/or communication objects
- 2 potential free, binary inputs to configure as needed
- Status LED
- Fits 55x55mm frames.
- Measuring range: -20 ... +80° C

Web code	Reference	Display	Buttons	Colour
14642	70350	NO	NO	White
14643	70351	NO	NO	Aluminium
14644	70352	NO	NO	Anthracite
14645	70353	NO	NO	Stainless Steel
15822	70354	YES	NO	White
15823	70355	YES	NO	Aluminium

SENSORS

SK02-T Temperature sensor, surface mount

Arcus



- Temperature measurement
- Upper temperature threshold
- Sending of minimum and maximum registered temperature values.
- 2 point, PI and PWM thermostats for cooling and heating
- Measuring range: -25 ... +55° C

Web code **Reference**

7715 30102201

SK01-T Temperature sensor IP65 without probe

Arcus



- Temperature measurement
- Upper temperature threshold
- Sending of minimum and maximum registered temperature values.
- 2 point, PI and PWM thermostats for cooling and heating
- Analogue input for PT1000 probe.
- Protection rating IP65.

Web code **Reference**

9993 30101000

SK01-T-ATF2 Temperature sensor IP65 with probe

Arcus



- Temperature measurement
- Upper temperature threshold
- Sending of minimum and maximum registered temperature values.
- 2 point, PI and PWM thermostats for cooling and heating
- Measuring range: -50 ... +90° C
- Protection rating IP65.

Web code **Reference**

8275 30101007

KNX T-AP Temperature sensor IP65 with probe

Elsner



- Temperature measurement
- 4 configurable temperature thresholds.
- Sending of minimum and maximum registered temperature values.
- PI thermostat for cooling and heating, PI or 2 point regulation for additional cooling and additional heating.
- For flush-mount installation, hidden under blind cover.
Measuring range: -40 ... +80° C

Web code **Reference**

8138 70121

SK08-T8 Controller for 8 PT1000 temperature probes, IP65

Arcus



- 8 analogue inputs for PT1000 temperature probes (not included).
For each input:
 - Temperature measurement
 - Upper and lower temperature thresholds.
 - 2 point, PI and PWM thermostat for cooling and heating.
 - Measuring range: -30...+180°C
- Protection rating IP65

Web code **Reference**

9917 30801000

SK07-TC-6B Controller for PT1000 temperature probe, IP20

Arcus



- Temperature measurement (PT1000 temperature probe not included)
- Setting of temperature limits
- Sending of minimum and maximum registered temperature values.
- 2 point, PI and PWM thermostat
- Setpoint temp. variation via front buttons and/or communication objects
- 6 potential free, binary inputs to configure as needed
- Measuring range: -20...+80°C

Web code **Reference**

16843 30510790

SENSORS



SK01-T-OTFF Arcus
IP65 temperature sensor with square contact probe for flat surfaces

- Temperature measurement
- Upper temperature threshold
- Sending of minimum and maximum registered temperature values.
- 2 point, PI and PWM thermostat for cooling and heating.
- Measuring range: -30 ... +105° C
- Protection rating IP65.

Web code	Reference
6158	30101001



SK01-T-ALTF2 Arcus
IP65 temperature sensor with contact probe for pipes and ducts

- Temperature measurement
- Upper temperature threshold
- Sending of minimum and maximum registered temperature values.
- 2 point, PI and PWM thermostat for cooling and heating.
- Measuring range: -30 ... +110° C
- Protection rating IP65.

Web code	Reference
8390	30101006



SK01-T-HTF Arcus
IP65 Temperature sensor with stainless steel V4A immersion probe

- Temperature measurement
- Upper temperature threshold
- Sending of minimum and maximum registered temperature values.
- 2 point, PI and PWM thermostat for cooling and heating.
- Protection rating IP65.

Web code	Reference	Measure r.	IP probe	Probe cable m.
6130	30101002	-30...+105°C	65	PVC
6112	30101003	-50...+180°C	65	Silicone
6131	30101055	-50...+250°C	68	Teflon



SK01-T-ESTF Arcus
IP65 Temperature sensor with probe within steel V4A screw-in immersion stem

- Temperature measurement
- Upper temperature threshold
- Sending of minimum and maximum registered temperature values.
- 2 point, PI and PWM thermostat for cooling and heating.
- With Ø 8 mm screw-in, V4A steel probe that supports up to 40 bars
- Protection rating IP65.

Web code	Reference	Measure r.	Probe cable m.	Probe size
10011	30101008	-35...+105°C	PVC	G1/2", 50mm
10012	30101009	-35...+105°C	PVC	G1/2", 100mm
10013	30101010	-50...+180°C	Silicone	G1/2", 50mm
10014	30101011	-50...+180°C	Silicone	G1/2", 100mm



SK01-T-ALTF1 Arcus
IP65 temperature sensor with axial contact probe for pipes and ducts

- Temperature measurement
- Upper temperature threshold
- Sending of minimum and maximum registered temperature values.
- 2 point, PI and PWM thermostat for cooling and heating.
- Protection rating IP65.

Web code	Reference	Measure r.	Probe cable m.
6332	30101004	-35...+105°C	PVC
9212	30101005	-35...+180°C	Silicone



SK01-T-ETF1 Arcus
IP65 Temperature sensor with probe within brass screw-in immersion stem

- Temperature measurement
- Upper temperature threshold
- Sending of minimum and maximum registered temperature values.
- 2 point, PI and PWM thermostat for cooling and heating.

SENSORS

- With Ø 8 mm screw-in, V4A steel probe that supports up to 40 bars
- Protection rating IP65

Web code	Reference	Probe size
6026	30101013	G1/2", 50mm
6083	30101014	G1/2", 100mm
5945	30101015	G1/2", 150mm
6084	30101016	G1/2", 200mm
6085	30101017	G1/2", 250mm
6086	30101018	G1/2", 300mm
6087	30101019	G1/2", 400mm

SK01-T-ETF2 Arcus

IP65 Temperature sensor with probe within steel V4A screw-in immersion stem



- Temperature measurement
- Upper temperature threshold
- Sending of minimum and maximum registered temperature values.
- 2 point, PI and PWM thermostat for cooling and heating.
- Measuring range: -30...+150 °C
- With Ø 8 mm screw-in, V4A steel probe that supports up to 40 bars
- Protection rating IP65.

Web code	Reference	Probe size
6081	30101020	G1/2", 50mm
6134	30101021	G1/2", 100mm
6135	30101022	G1/2", 150mm
6136	30101023	G1/2", 200mm
6137	30101024	G1/2", 250mm
6138	30101025	G1/2", 300mm
6139	30101026	G1/2", 400mm

SK01-T-ETF3 Arcus

IP65 Temperature sensor with extended probe within steel V4A screw-in immersion stem



- Temperature measurement
- Upper temperature threshold
- Sending of minimum and maximum registered temperature values.
- 2 point, PI and PWM thermostat for cooling and heating.
- Measuring range: -30...+150 °C
- With Ø 8 mm screw-in, V4A steel probe that supports up to 40 bars
- Protection rating IP65.

Web code	Reference	Probe size
9995	30101027	G1/2", 50mm
9996	30101028	G1/2", 100mm
9997	30101029	G1/2", 150mm
9998	30101030	G1/2", 200mm
9999	30101031	G1/2", 250mm
10000	30101032	G1/2", 300mm
10001	30101033	G1/2", 400mm

SK01-T-ETF7 Arcus

IP65 Temperature sensor with quick-temperature-response probe within immersion stem



- Temperature measurement
- Upper temperature threshold
- Sending of minimum and maximum registered temperature values.
- 2 point, PI and PWM thermostat for cooling and heating.
- Measuring range: -30...+150°C
- Neck tube probe with quick-response for measuring temperature in places with major temperature fluctuations in short periods of time.
- Protection rating IP65.

Web code	Reference	Probe size
10002	30101034	G1/2", 100mm
10003	30101035	G1/2", 150mm
10004	30101036	G1/2", 250mm

SENSORS

SK01-T-KTF1

Arcus

IP65 temperature sensor with probe for air ducts



- Temperature measurement
- Upper temperature threshold
- Sending of minimum and maximum registered temperature values.
- 2 point, PI and PWM thermostat for cooling and heating.
- Measuring range: -30...+150°C
- Protection rating IP65.

Web code	Reference	Probe size
10005	30101037	G1/2", 50mm
10006	30101038	G1/2", 100mm
10007	30101039	G1/2", 150mm
8880	30101040	G1/2", 200mm
10008	30101041	G1/2", 250mm
9165	30101042	G1/2", 300mm
9093	30101043	G1/2", 400mm

SK01-T-RPTF1

Arcus

IP65 temperature sensor with pendulum room probe



- Temperature measurement
- Upper temperature threshold
- Sending of minimum and maximum registered temperature values.
- 2 point, PI and PWM thermostat for cooling and heating.
- Measuring range: -30...+75°C
- Protection rating IP65.

Web code	Reference
10009	30101050

SK01-T-RPTF2

Arcus

IP65 temperature sensor with pendulum black globe probe



- Temperature measurement
- Upper temperature threshold
- Sending of minimum and maximum registered temperature values.
- 2 point, PI and PWM thermostat for cooling and heating.
- Measuring range: -30...+80°C
- Protection rating IP65.

Web code	Reference
10010	30101051

SK30-TC-VOC

Arcus

Temperature and VOC (volatile organic compounds) sensor, fitted-mount, with push buttons or rotary control



- Temperature and VOC measurement
- Setting of temperature limits
- Sending of minimum and maximum registered temperature values.
- 2 point, PI and PWM thermostat
- Ventilation control according to the VOC values
- Setpoint temp. variation via front buttons and/or communication objects
- 2 potential free, binary inputs to configure as needed
- Status LED
- Fits 55x55mm frames.
- Temperature measuring range: -20...+80°C
- VOC measuring range: 45...-2000 ppm

Web code	Reference	Buttons	Rotary control	Colour
16612	30513361	NO	NO	White
16613	30513362	NO	NO	Dark grey
16616	30513371	YES	NO	White
16617	30513372	YES	NO	Dark grey
16614	30513351	NO	YES	White
16615	30513352	NO	YES	Dark grey

SENSORS

SK30-TC-CO2

Arcus

Temperature and CO2 sensor, flush-mount, with push buttons or rotary control



- Temperature and CO2 measurement
- Setting of temperature limits
- Sending of minimum and maximum registered temperature values.
- 2 point, PI and PWM thermostat
- Ventilation control according to the CO2 values
- Setpoint temp. variation via front buttons and/or communication objects
- 2 potential free, binary inputs to configure as needed
- Status LED
- Fits 55x55mm frames.
- Temperature measuring range: -20...+80°C
- CO2 measuring range: 45...-2000 ppm

Web code	Reference	Buttons	Rotary control	Colour
16572	30512361	NO	NO	White
16575	30512362	NO	NO	Dark grey
16578	30512371	YES	NO	White
16580	30512372	YES	NO	Dark grey
16576	30512351	NO	YES	White
16577	30512352	NO	YES	Dark grey

SK03-TFK

Arcus

Temperature and humidity sensor, flush-mount



- Measurement of temperature, relative humidity, absolute humidity, dew point and enthalpy
- Upper temperature threshold
- Upper and lower relative humidity thresholds.
- Dew point alarm
- Sending of minimum and maximum registered temperature values.
- 2 point, PI and PWM thermostat for cooling and heating.
- 2 point regulation of relative humidity
- Fits 55x55mm frames.
- Temperature measuring range: -25...+55°C
- Humidity measuring range: 10...90%

Web code	Reference	Colour
6079	30303201	White
6080	30303202	Black

KNX TH-UP

Arcus

Temperature and humidity sensor, flush-mount, with optional push buttons and display



- Measurement of temperature, relative humidity, absolute humidity and dew point
- 4 configurable temperature thresholds.
- 2 configurable humidity thresholds.
- Dew point threshold.
- Sending of minimum and maximum registered temperature values.
- Sending of minimum and maximum registered humidity values.
- PI thermostat for cooling and heating, and 2 point regulation for additional cooling and additional heating.
- PI regulation for humidification and dehumidification.
- The models fitted with display can show up to 3 information lines.
- The models fitted with push buttons allow manual set-point temperature changes.
- Fits 55x55mm frames.
- Temperature measuring range: -40 ... +100° C
- Humidity measuring range: 0 ... 100 %

Web code	Reference	Display	Buttons	Colour
15831	70362	NO	NO	White
15832	70363	NO	NO	Aluminium
15833	70364	NO	NO	Anthracite
15834	70365	NO	NO	Stainless Steel
15835	70366	YES	NO	White
15836	70367	YES	NO	Aluminium
15837	70368	YES	NO	Anthracite
15838	70369	YES	NO	Stainless Steel
15839	70370	YES	YES	White
15840	70374	YES	YES	Aluminium
15841	70375	YES	YES	Anthracite
15842	70376	YES	YES	Stainless Steel

SENSORS

Neo-TC Temperature and humidity sensor, flush-mount

Arcus



- Measurement of temperature, relative humidity, absolute humidity, dew point and enthalpy
- Upper temperature threshold
- Upper and lower relative and absolute humidity thresholds.
- Sending of minimum and maximum registered temperature values.
- Binary inputs + Additional functions
- Temperature measuring range: -20 ... +80 ° C
- Protection rating IP65. Aluminum enclosure

Web code	Reference	Colour
17878	30511583	Squared, brushed aluminum
17879	30511584	Squared, brushed black aluminum
17880	30511683	Rounded, brushed aluminum
17881	30511684	Rounded, brushed black aluminum

SK30-THC Temperature and humidity sensor, flush-mount, with push buttons or rotary control

Arcus



- Measurement of temperature, relative humidity, absolute humidity, dew point and enthalpy
- Setting of temperature and humidity limits
- Sending of minimum and maximum registered temperature values.
- 2 point, PI and PWM thermostat
- Setpoint temp. variation via front buttons and/or communication objects
- 2 potential free, binary inputs to configure as needed
- Status LED
- Fits 55x55mm frames.
- Temperature measuring range: -20...+80°C
- Humidity measuring range: 0...95%

Web code	Reference	Buttons	Rotary control	Colour
16557	30531361	NO	NO	White
16558	30531362	NO	NO	Dark grey
16561	30531371	YES	NO	White
16562	30531372	YES	NO	Dark grey
16559	30531351	NO	YES	White
16560	30531352	NO	YES	Dark grey

SK02-TFK Temperature and humidity sensor, surface mount

Arcus



- Measurement of temperature, relative humidity, absolute humidity, dew point and enthalpy
- Upper temperature threshold
- Upper and lower relative humidity thresholds.
- Dew point alarm
- Sending of minimum and maximum registered temperature values.
- 2 point thermostat for relative humidity
- Temperature measuring range: -25...+55°C
- Humidity measuring range: 10... 90%

Web code	Reference
5881	30302201

Cala KNX TH Temperature and humidity sensor, flush mount, with display

Elsner



- Measurement of temperature, relative and absolute humidity
- Upper and lower relative temperature thresholds.
- Sending of minimum and maximum registered temperature values.
- Receiving and processing data from the KNX bus
- 4 analogic/digital inputs + Additional functions
- Temperature measuring range: -20 ... +70 ° C
- Protection rating: IP20
- For 55x55mm frames installations

Web code	Reference	Colour
17676	70602	Black
18161	70607	White

SENSORS

SK01-TFK-AFF

Arcus

IP65 Temperature and humidity sensor with probe



- Measurement of temperature, relative humidity, absolute humidity, dew point and enthalpy
- Upper temperature threshold
- Upper and lower relative humidity thresholds.
- Dew point alarm
- Sending of minimum and maximum registered temperature values.
- 2 point, PI and PWM thermostat for cooling and heating.
- 2 point thermostat for relative humidity
- Temperature measuring range: -20...+80°C
- Humidity measuring range: 10...90%
- Protection rating IP65.

Web code	Reference
----------	-----------

6090	30301053
------	----------

TH65-AP

Elsner

IP65 Temperature and humidity sensor with probe



- Measurement of temperature, relative humidity, absolute humidity, dew point and enthalpy
- 4 configurable temperature thresholds.
- 2 configurable humidity thresholds.
- Dew point threshold
- Sending of minimum and maximum registered temperature values.
- Sending of minimum and maximum registered humidity values.
- PI thermostat for cooling and heating, PI or 2 point regulation for additional cooling and additional heating.
- PI regulation for humidification and dehumidification.
- Temperature measuring range: -40...+80°C
- Humidity measuring range: 0... 100%
- Protection rating IP65.

Web code	Reference
----------	-----------

9986	70184
------	-------

SK01-TFK-RPFF

Arcus

IP65 temperature and humidity sensor with pendulum room probe



- Measurement of temperature, relative humidity, absolute humidity, dew point and enthalpy
- Upper temperature threshold
- Upper and lower relative humidity thresholds.
- Dew point alarm
- Sending of minimum and maximum registered temperature values.
- 2 point, PI and PWM thermostat for cooling and heating.
- 2 point thermostat for relative humidity
- Temperature measuring range: -20...+80°C
- Humidity measuring range: 10...100%
- Protection rating IP65.

Web code	Reference	Protection against
----------	-----------	--------------------

10015	30301054	Dust
10016	30301056	Dust and condensation

SK01-TFK-KFF

Arcus

IP65 temperature and humidity sensor with probe for air ducts



- Measurement of temperature, relative humidity, absolute humidity, dew point and enthalpy
- Upper temperature threshold
- Upper and lower relative humidity thresholds.
- Dew point alarm
- Sending of minimum and maximum registered temperature values.
- 2 point, PI and PWM thermostat for cooling and heating.
- 2 point thermostat for relative humidity
- Temperature measuring range: -20...+80°C
- Humidity measuring range: 10...90%
- Protection rating IP65.

Web code	Reference
----------	-----------

10017	30301057
-------	----------

SENSORS

SK07-THC-4B

Arcus

Controller for SHT11 temperature and humidity probe, IP20



- Temperature and humidity measurement
- Setting of temperature and humidity limits
- Sending of minimum and maximum registered temperature values.
- 2 point, PI and PWM thermostat
- Setpoint temp. variation via front buttons and/or communication objects
- 4 potential free, binary inputs to configure as needed
- Inputs for SHT11 temperature and humidity probe (not included)
- Measuring range: -20...+80°C
- Humidity measuring range: 0...95%

Web code	Reference
----------	-----------

17442	30530780
-------	----------

SK30-THC-VOC

Arcus

Temperature, humidity and VOC (volatile organic compounds) sensor, fitted-mount, with push buttons or rotary control



- Measurement of temperature, relative humidity, absolute humidity, dew point, enthalpy and VOC
- Setting of temperature and VOC limits
- Sending of minimum and maximum registered temperature values.
- 2 point, PI and PWM thermostat
- Ventilation control according to the VOC values
- Setpoint temp. variation via front buttons and/or communication objects
- 2 potential free, binary inputs to configure as needed
- Status LED
- Fits 55x55mm frames.
- Temperature measuring range: -20...+80°C
- Humidity measuring range: 0...+95%
- VOC measuring range: 450...-2000 ppm

Web code	Reference	Buttons	Rotary control	Colour
----------	-----------	---------	----------------	--------

16622	30533361	NO	NO	White
16625	30533362	NO	NO	Dark grey
16736	30533371	YES	NO	White
16737	30533372	YES	NO	Dark grey
16629	30533351	NO	YES	White
16630	30533352	NO	YES	Dark grey

SK30-THC-CO2

Arcus

Temperature, humidity and CO2 sensor, flush-mount, with push buttons or rotary control



- Measurement of temperature, relative humidity, absolute humidity, dew point, enthalpy and CO2
- Setting of temperature and CO2 limits
- Sending of minimum and maximum registered temperature values.
- 2 point, PI and PWM thermostat
- Ventilation control according to the CO2 values
- Setpoint temp. variation via front buttons and/or communication objects
- 2 potential free, binary inputs to configure as needed
- Status LED
- Fits 55x55mm frames.
- Temperature measuring range: -20...+80°C
- Humidity measuring range: 0...+95%
- CO2 measuring range: 0...-2000 ppm

Web code	Reference	Buttons	Rotary control	Colour
----------	-----------	---------	----------------	--------

16581	30532361	NO	NO	White
16582	30532362	NO	NO	Dark grey
16585	30532371	YES	NO	White
16586	30532372	YES	NO	Dark grey
16583	30532351	NO	YES	White
16584	30532352	NO	YES	Dark grey

SK03-TTFK

Arcus

Temperature and humidity sensor with probe and input for additional PT1000 probe, flushmount



- Measurement of temperature, temperature of the additional PT1000 probe (not included), relative humidity, absolute humidity, dew point and enthalpy.
- Upper temperature threshold
- Upper and lower relative humidity thresholds.
- Dew point alarm
- Sending of minimum and maximum registered temperature values.
- 2 point, PI and PWM thermostat for cooling and heating.
- 2 point regulation of relative humidity
- According to the temperature of the additional PT1000 probe (not included):

SENSORS

- 2 point thermostat for heating; or 2 point regulation of the dew temperature.
- Temperature measuring range: -20... + 80°C
- Humidity measuring range: 0..95%

Web code	Reference	Colour
8221	30403201	White
8222	30403202	Black

SK07-TTHC-4B Arcus Controller for SHT11 temperature and humidity probe, IP20 and input for PT1000 probe, fitted mount



- Temperature and humidity measurement
- Sending of minimum/maximum registered temperature values.
- Termostato 2 puntos, PI y PWM
- Setpoint temp. variation via front buttons and/or communication objects
- 4 potential free, binary inputs to configure as needed
- According to the temperature of the additional PT1000 probe (not included)
- Temperature measuring range: -20..+80°C
- Humidity measuring range: 0...+95%

Web code	Reference
17450	30540780

SK30-TTHC Arcus Temperature and humidity sensor, fitted - mount, with push buttons or rotary control and input for control rotativo



- Measurement of temperature, relative humidity, absolute humidity, dew point and enthalpy
- Upper and lower temperature limits setting up
- Envío del valor mínimo y máximo de temperatura registrados
- 2 point, PI and PWM thermostat
- Setpoint temp. variation via front buttons and/or communication
- 2 potential free, binary inputs to configure as needed
- According to the temperature of the additional PT1000 probe (not included)
- Status LED
- Fits 55x55mm frames.

- Temperature measuring range: -20... + 80°C
- Humidity measuring range: 0..95%



Web code	Reference	Buttons	Rotary control	Colour
16563	30541361	NO	NO	White
16564	30541362	NO	NO	Dark grey
16570	30541371	YES	NO	White
16571	30541372	YES	NO	Dark grey
16568	30541351	NO	YES	White
16569	30541352	NO	YES	Dark grey

SK30-TTHC-VOC Arcus Temperature, humidity and VOC (volatile organic compounds) sensor and input for PT1000 probe, fitted-mount, with push buttons or rotary control



- Measurement of temperature, relative humidity, absolute humidity, dew point, enthalpy and VOC
- Setting of temperature and VOC limits
- Sending of minimum and maximum registered temperature values.
- 2 point, PI and PWM thermostat
- Ventilation control according to the VOC values
- Setpoint temp. variation via front buttons and/or communication objects
- 2 potential free, binary inputs to configure as needed
- Status LED
- Fits 55x55mm frames.
- Temperature measuring range: -20..+80°C
- Humidity measuring range: 0...+95%
- VOC measuring range: 450...-2000 ppm

Web code	Reference	Buttons	Rotary control	Colour
16836	30543361	NO	NO	White
16837	30543362	NO	NO	Dark grey
16840	30543371	YES	NO	White
16841	30543372	YES	NO	Dark grey
16838	30543351	NO	YES	White
16839	30543352	NO	YES	Dark grey

SENSORS

SK30-TTHC-C02

Arcus

Sensor de temperatura , humedad, CO2 y entrada para sonda PT1000 , instalación empotrada, con botones o control rotativo



- Measurement of temperature, relative humidity, absolute humidity, dew point, enthalpy and CO2
- Setting of temperature and CO2 limits
- Sending of minimum and maximum registered temperature values.
- 2 point, PI and PWM thermostat
- Ventilation control according to the CO2 values
- Setpoint temp. variation via front buttons and/or communication objects
- 2 potential free, binary inputs to configure as needed
- Input for additional PT1000 temperature probe
- Status LED
- Fits 55x55mm frames.
- Temperature measuring range: -20..+80°C
- Humidity measuring range: 0...+95%
- CO2 measuring range: 0...-2000 ppm

Web code	Reference	Buttons	Rotary control	Colour
16602	30542361	NO	NO	White
16603	30542362	NO	NO	Dark grey
16607	30542371	YES	NO	White
16608	30542372	YES	NO	Dark grey
16604	30542351	NO	YES	White
16605	30542352	NO	YES	Dark grey

SK01-TTFK-AFF

Arcus

IP65 Temperature and humidity sensor with probe and input for additional PT1000 probe



- Measurement of temperature, temperature of the additional PT1000 probe (not included), relative humidity, absolute humidity, dew point and enthalpy.
- Upper temperature threshold
- Upper and lower relative humidity thresholds.
- Dew point alarm
- Sending of minimum and maximum registered temperature values.
- 2 point, PI and PWM thermostat for cooling and heating.
- 2 point regulation of relative humidity

- According to the temperature of the additional PT1000 probe (not included):
- 2 point thermostat for heating; or 2 point regulation of the dew temperature.
- Temperature measuring range: -20... + 80°C
- Humidity measuring range: 10..90%
- Protection rating IP65.

Web code	Reference
6091	30401053

SK01-TTFK-RPFF

Arcus

IP65 Temperature and humidity sensor with pendulum room probe and input for additional PT1000 probe



- Measurement of temperature, temperature of the additional PT1000 probe (not included), relative humidity, absolute humidity, dew point and enthalpy.
- Upper temperature threshold
- Upper and lower relative humidity thresholds.
- Dew point alarm
- Sending of minimum and maximum registered temperature values.
- 2 point, PI and PWM thermostat for cooling and heating.
- 2 point regulation of relative humidity
- According to the temperature of the additional PT1000 probe (not included):
- 2 point thermostat for heating; or 2 point regulation of the dew temperature.
- Temperature measuring range: -20... + 80°C
- Humidity measuring range: 10..100%
- Protection rating IP65.

Web code	Reference	Protection against
10046	30401054	Dust
10047	30401056	Dust and condensation

SENSORS

KNX AQS CO2 sensor, flush-mount, with optional push buttons and display

Elsner



- Measurement of CO2
- 4 configurable CO2 thresholds.
- Sending of maximum registered CO2 value
- 2-stages CO2 PI regulation
- 2 PI (%) value comparators to calculate average and maximum or minimum values of up to 5 inputs
- The models fitted with display can show up to 3 information lines.
- The models fitted with push buttons allow their free configuration for either switching, regulating, shutter/blinds, scenes, etc.
- Fits 55x55mm frames.
- CO2 measuring range: 0...2000 ppm



Web code	Reference	Display	Buttons	Colour
10772	70224	NO	NO	White
10773	70225	NO	NO	Aluminium
10774	70226	NO	NO	Anthracite
10775	70227	NO	NO	Stainless Steel
10776	70229	YES	YES	White
10777	70230	YES	YES	Aluminium
10778	70231	YES	YES	Anthracite
10779	70232	YES	YES	Stainless Steel

KNX VOC-UP VOC (volatile organic compounds) mixed gas sensor, flush-mount

Elsner



- VOC measurement
- 4 configurable VOC thresholds
- Sending of maximum registered VOC value
- 2-stages VOC PI regulation
- 2 PI (%) value comparators to calculate average and maximum or minimum values of up to 5 inputs
- Fits 55x55mm frames.
- VOC measuring range: 450...5000 ppm
- Additional 12-24V DC power supply required.

Web code	Reference	Colour
11337	70244	White
11338	70245	Aluminium

Web code	Reference	Colour
11339	70246	Anthracite
11340	70247	Stainless Steel

KNX AQS/TH-UP Temperature, humidity and CO2 sensor, flush-mount, with optional push buttons and display

Elsner



- Measurement of temperature, relative humidity, absolute humidity, dew point and CO2.
- 3 configurable temperature thresholds.
- 2 configurable humidity thresholds.
- 4 configurable CO2 thresholds.
- Dew point threshold.
- Sending of minimum and maximum registered temperature values.
- Sending of minimum and maximum registered humidity values.
- Sending of maximum registered CO2 value.
- PI thermostat for cooling and heating, and 2 point regulation for additional cooling and additional heating.
- PI regulation for humidification and dehumidification.
- 2-stages CO2 PI regulation
- 2 PI (%) value comparators to calculate average and maximum or minimum values of up to 5 inputs.
- The models fitted with display can show up to 3 information lines.
- The models fitted with push buttons allow manual set-point temperature changes. They can also be configured for switching, regulation, shutter/blinds, scenes, etc.
- Fits 55x55mm frames.
- Temperature measuring range: -10 ... +50°C
- Humidity measuring range: 0 ... 95 %
- CO2 measuring range: 0 ... 2000 ppm

Web code	Reference	Display	Buttons	Colour
10780	70234	NO	NO	White
10781	70235	NO	NO	Aluminium
10782	70236	NO	NO	Anthracite
10783	70237	NO	NO	Stainless Steel
10784	70239	YES	YES	White
10785	70240	YES	YES	Aluminium
10786	70241	YES	YES	Anthracite
10787	70242	YES	YES	Stainless Steel

SENSORS

Neo-TC-CO2 Temperature, humidity and CO2 sensor, flush-mount

Arcus



- Measurement of temperature, relative humidity, absolute humidity, dew point and enthalpy
- Upper temperature threshold
- Sending of maximum registered CO2 value.
- Upper and lower relative and absolute humidity thresholds.
- Sending of minimum and maximum registered temperature values.
- Binary inputs + Additional functions
- Temperature measuring range: -20 ... +80 ° C
- Protection rating IP65. Aluminum enclosure

Web code	Reference	Colour
17882	30512563	Square, brushed aluminum
17883	30512564	Square, brushed black aluminum
17884	30512663	Rounded, brushed aluminum
17885	30512664	Rounded, brushed black aluminum

Cala KNX AQS/TH Temperature, humidity and CO2 sensor, flush mount, with display

Elsner



- Measurement of temperature, relative and absolute humidity and CO2
- Upper and lower relative temperature thresholds.
- Sending of minimum and maximum registered temperature values.
- Measurement CO2 range: 0 to 2000 ppm
- Receiving and processing data from the KNX bus
- 4 analogic/digital inputs + Additional functions
- Temperature measuring range: -20 ... +70 ° C
- Protection rating: IP20
- For 55x55mm frames installations

Web code	Reference	Colour
17677	70603	Black
18163	70608	White

SENSORS

SEWI KNX Multi-function sensor

Elsner



- Sensor range for measuring temperature and/or humidity and/or brightness (in 3 directions) and/or atmospheric pressure and/or CO2
- Configurable thresholds.
- Installation in ceiling

Web code	Reference	Movement	Temperature	Humidity	Brightness	At. pressure	CO2
17072	70392	NO	YES	NO	NO	NO	NO
17073	70393	NO	YES	YES	NO	NO	NO
17074	70394	NO	NO	NO	NO	NO	YES
17075	70395	NO	NO	NO	YES	NO	NO
17076	70396	YES	NO	NO	YES	NO	NO
17077	70397	NO	YES	YES	NO	YES	YES
17079	70398	YES	YES	YES	NO	YES	NO
17080	70399	YES	YES	YES	YES	YES	YES

SALVA KNX Fire detector

Elsner

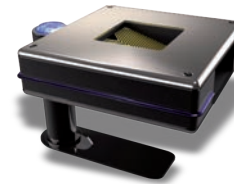


- Smoke and/or fire detector
- Audio signal
- 9V battery for voltage failure included
- Temperature measuring range: -10...+50°C
- Humidity measuring range: 0 ... 90 %
- PI thermostat for cooling and heating, and 2 point regulation for additional cooling and additional heating (advanced function).
- PI regulation for humidification and dehumidification (advanced function).

Web code	Reference	Smoke	Fire	Temperature	Humidity	Advanced functions
17446	70404	YES	YES	YES	YES	YES
17447	70405	YES	NO	NO	NO	NO

Quadra Weather Station

BMS



- Measurement of temperature, wind, wind direction, brightness (independent values for north, east, south, west and skywards), global radiation (independent values for north, east, south, west and skywards), twilight and precipitation.
- Sun position calculation.
- Advanced functions via sun areas, weekly schedules and the analysis of the registered values.
- Protection rating IPX4.
- Additional 21-28V DC power supply required.

Web code Reference

13507 Quadra

SUNTRACER KNX BASIC Weather Station

Elsner



- Measurement of temperature, wind, brightness, twilight and precipitation.
- 4 configurable temperature thresholds.
- 3 configurable wind thresholds.
- 3 configurable brightness thresholds.
- 3 configurable twilight thresholds.
- Sending of minimum and maximum registered temperature values.
- Sending of maximum registered wind value.
- Protection rating IP44.
- Additional power supply required.

Web code Reference Additional power supply

5667	3095	230VAC
6117	3096	24VDC (20VAC)

SUNTRACER KNX GPS-LIGHT Weather Station with integrated GPS receiver

Elsner



- Measurement of temperature, wind, brightness, twilight and precipitation.
- Obtains the position, date and current time from the GPS signal.
- Sun position calculation.
- 4 configurable temperature thresholds.
- 3 configurable wind thresholds.
- 3 configurable brightness thresholds.

SENSORS

- 3 configurable twilight thresholds.
- 5 configurable sun areas.
- Sending of minimum and maximum registered temperature values.
- Sending of maximum registered wind value.
- Weekly and annual time switches.
- Protection rating IP44.
- Additional 12-40V DC (12-28V AC) power supply required.

Web code	Reference	Additional power supply
9032	3094	12...40V DC (12...28V AC)

SUNTRACER KNX-GPS Elsner Weather Station with integrated GPS receiver and facade control



- Measurement of temperature, wind, brightness, twilight and precipitation.
- Obtains the position, date and current time from the GPS signal.
- Sun position calculation.
- 4 configurable temperature thresholds.
- 3 configurable wind thresholds.
- 3 configurable brightness thresholds.
- 3 configurable twilight thresholds.
- Sending of minimum and maximum registered temperature values.
- Sending of maximum registered wind value.
- Weekly and annual time switches.
- Automatic control of up to 6 independent façades.
- Protection rating IP44.
- Additional 12-40V DC (12-28V AC) power supply required.

Web code	Reference
9404	3093

SUNTRACER KNX SL BASIC Elsner Weather Station



- Measurement of temperature, wind, brightness (in 3 directions), twilight and precipitation.
- Configurable thresholds.
- Protection rating IP44.
- Additional 12-40V DC (12-28V AC) power supply required.

Web code	Reference
15797	70156

SUNTRACER KNX SL LIGHT Elsner Weather Station with integrated GPS receiver and facade control



- Measurement of temperature, wind, brightness, twilight and precipitation.
- Obtains the position, date and current time from the GPS signal.
- Sun position calculation.
- Configurable thresholds.
- Weekly and annual time switches.
- Automatic control of up to 5 independent façades.
- Protection rating IP44.
- Additional 12-40V DC (12-28V AC) power supply required.

Web code	Reference
15796	70155

SUNTRACER KNX SL Elsner Weather Station with integrated GPS receiver and facade control



- Measurement of temperature, wind, brightness, twilight, precipitation and atmospheric pressure.
- Obtains the position, date and current time from the GPS signal.
- Sun position calculation.
- Configurable thresholds.
- Weekly and annual time switches.
- Automatic control of up to 8 independent façades.
- Protection rating IP44.
- Additional 12-40V DC (12-28V AC) power supply required.

Web code	Reference
15795	70154

SK01-GPS-TC Elsner Temperature and brightness sensor with integrated GPS receiver, IP65



- Temperature and humidity measurement
- Obtains the position, date and current time from the GPS signal.
- Astronomic time.
- Time switch.
- Protection rating IP65.

Web code	Reference
14782	66100001

SENSORS

SK10L-TC-L Brightness sensor and input for additional PT1000 temperature probe, IP65

Arcus



- Brightness measurement
- Setting of temperature limits
- Sending of minimum and maximum registered temperature values.
- 2 point, PI and PWM thermostat
- Setpoint temp. variation via front buttons and/or communication objects
- Input for PT1000 temperature probe
- Temperature measuring range: -20...+80°C
- Brightness measuring range: 3...220.000 lux

Web code **Reference**
17448 30514100

SK10L-THC-L-AFF Temperature, humidity and brightness sensor, IP65

Arcus



- Measurement of temperature, relative humidity, absolute humidity, dew point, enthalpy and brightness
- Setting of temperature and humidity limits
- Sending of minimum and maximum registered temperature values.
- 2 point, PI and PWM thermostat
- Setpoint temp. variation via front buttons and/or communication objects
- Input for PT1000 temperature probe
- Temperature measuring range: -20...+80°C
- Brightness measuring range: 3...220.000 lux

Web code **Reference**
17449 30534153

SK10L-TTHC-L-AFF Temperature, humidity and brightness sensor and input for PT1000 temperature probe, IP65

Arcus

- Measurement of temperature, relative humidity, absolute humidity, dew point, enthalpy and brightness
- Setting of temperature and humidity limits
- Sending of minimum and maximum registered temperature values.



- 2 point, PI and PWM thermostat
- Setpoint temp. variation via front buttons and/or communication objects
- Input for PT1000 temperature probe
- Temperature measuring range: -20...+80°C
- Humidity measuring range: 0...+95°C
- Brightness measuring range: 3...220.000 lux

Web code **Reference**
17451 30544153

KNX SENSOR Weather sensor

Elsner



- Sensor range for measuring wind and/or precipitation and/or brightness
- 3 configurable thresholds
- Sending of maximum registered wind value.
- Protection rating IP44.
- Additional power supply required.

Web code	Reference	Wind	Precip.	Bright.	Add.power supply
6040	70122	YES	NO	NO	230VAC
6041	70123	YES	NO	NO	24VDC (20VAC)
6042	70124	NO	YES	NO	230VAC
6043	70125	NO	YES	NO	24VDC (20VAC)
6044	70199	NO	NO	YES	NO
6045	70126	YES	YES	NO	230VAC
6046	70127	YES	YES	NO	24VDC (20VAC)
6047	70128	YES	NO	YES	230VAC
6048	70129	YES	NO	YES	24VDC (20VAC)

Vari KNX Weather sensor

Elsner



- Sensor range for measuring temperature and/or humidity and/or brightness (in 3 directions) and/or atmospheric pressure and/or GPS.
- Configurable thresholds.
- Protection rating IP44.

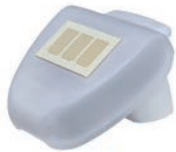
Web code	Reference	Temperature	Humidity	Brightness	Atmosph. press.	GPS
15818	70385	YES	NO	NO	NO	NO
15803	70382	NO	NO	YES	NO	NO

SENSORS

Web code	Reference	Temperature	Humidity	Brightness	Atmosph. press.	GPS
15816	70383	YES	NO	YES	NO	NO
15819	70386	YES	YES	NO	NO	NO
15817	70384	YES	YES	YES	NO	NO
15820	70388	YES	YES	NO	YES	NO
15821	70389	YES	YES	YES	YES	NO
15864	70387	NO	NO	NO	NO	YES

KNX SENSOR SL Weather sensor

Elsner



- Sensor range for measuring wind and/or precipitation and/or brightness
- Protection rating IP44.
- Additional 12-40V DC (12-28V AC) power supply required.

Web code	Reference	Wind	Precipitation	Brightness
15798	70158	YES	NO	NO
15799	70159	NO	YES	NO
15800	70162	YES	YES	NO
15801	70164	YES	NO	YES

SK08-GLBS-MES Global radiation sensor, IP65

Arcus



- Measurement of global radiation level
- Upper and lower global radiation thresholds.
- 2 point, PI and PWM global radiation regulation.
- Global radiation probe included
- Measurement range of global radiation: 0 ... 1800 W/m²
- Spectral range: 400... 1100 nm
- Protection rating IP65.

Web code	Reference
11032	30804001

KNX PY Global radiation sensor, IP44

Elsner



- Measurement of global radiation value
- 4 configurable global radiation thresholds.
- Sending of maximum registered global radiation value.
- Measurement range of global radiation: 0 ... 2500 W/m²
- Protection rating IP44.

Web code	Reference
----------	-----------

8137	70157
------	-------

SK08-BFT-WMT Soil temperature and moisture sensor, IP65

Elsner



- Measurement of soil temperature, soil moisture (in hPa), relative humidity, absolute humidity and dew point.
- Upper and lower temperature thresholds.
- Upper and lower soil moisture thresholds.
- Upper and lower relative humidity thresholds.
- Upper and lower absolute humidity thresholds.
- Upper and lower dew point thresholds.
- 2 point, PI and PWM thermostat.
- 2 point, PI and PWM soil moisture regulation.
- 2 point, PI and PWM relative humidity regulation.
- Soil temperature and humidity probe included.
- The model that supports an additional PT1000 probe (not included), also measures that probe's temperature; upper and lower threshold and 2 point, PI and PWM regulation.
- Measurement range of soil temperature: -20... +80° C
- Measurement range of soil moisture: 1...2000 hPa/mbar,
- 1-200.000 Pa
- Protection rating IP65.

Web code	Reference	Additional temperature probe accepted
----------	-----------	---------------------------------------

9169	30805001	NO
10023	30805021	YES

SENSORS

KNX I4-ERD

Elsner

Soil temperature and moisture sensor



- Up to 4 probes accepted (not included) For each input:
 - Temperature and relative humidity measurement
 - 2 configurable temperature thresholds.
 - 2 configurable humidity thresholds.
- Sending of minimum and maximum registered temperature values.
- Sending of minimum and maximum registered humidity values.
- Additional 230V AC power supply required.
- Size: 6 DIN mod.

Web code Reference

11923 70310

KNX TH-ERD

Elsner

Probe for soil temperature and moisture sensor KNX I4-ERD



- Protection rating IP68.

Web code Reference

12315 70312

X-S8-F

Arcus

Ultrasonic fill-level sensor (depth gauge)



- Measurement of the fill-level (in litre or m3), fill-height (in m, dm, cm or mm), distance to fill-level (in m, dm, cm or mm) and fill percentage
- Upper and lower fill-level thresholds
- Upper and lower fill-height thresholds
- Upper and lower distance to fill-level thresholds
- Upper and lower fill percentage thresholds
- 2 point fill-level regulation
- 2 point fill-height regulation
- 2 point distance-to-fill-level regulation
- 2 point fill percentage regulation
- Protection rating IP65.

- Additional 9-12V DC power supply required (included).

Web code	Reference	Installation	IP rating	Measuring range	Size
10282	30807001	Surface	65	0,15 ... 2,5 m	-
10699	30807002	DIN rail	20	0,15 ... 2,5 m	2 units
10692	30807011	Surface	65	0,75 ... 6 m	-
10698	30807012	DIN rail	20	0,75 ... 6m	2 units

S0250 basic

Elsner

Ultrasonic fill-level sensor (depth gauge)



- Measurement of the fill-level (in litre, m3 or %) or fill-height (in m) or distance to fill-level (in m)
- 5 configurable thresholds in cm, litres, m3 or %.
- Measuring range: 12 ... 250 cm
- Size: 3 DIN mod.

Web code Reference

12316 70153

S0250

Elsner

Ultrasonic fill-level sensor (depth gauge)



- Measurement of the fill-level (in litre, m3 or %) or fill-height (in m) or distance to fill-level (in m)
- 5 configurable thresholds in cm, litres, m3 or %.
- 2 relays that can be configured via own display and push buttons.
- Measuring range: 12 ... 250 cm
- Additional 230V AC power supply required.
- Size: 7 DIN mod.

Web code Reference

8071 70151

SENSORS



SK08-WAQ-MES **Water Quality Sensor IP65**

Arcus

- Measurement of pH level, ORP (redox/reduction potential) and water temperature.
- Run-hour counter.
- Upper and lower pH thresholds.
- Upper and lower ORP thresholds.
- Upper and lower temperature thresholds.
- Upper and lower run-hour thresholds (as electrode calibration alert).
- 2 point, PI and PWM pH regulation.
- 2 point, PI and PWM ORP regulation.
- Both electrodes included.
- Temperature measuring range: 0 ... +50° C
- Protection rating IP65.

Web code	Reference
-----------------	------------------

9151	30802001
------	----------

15Th Anniversary as a KNX wholesaler and KNX++ training centre



ENERGY COUNTERS · WATER COUNTERS



LINGG&JANKE



They deliver real energy (kWh and Wh), power (W), current (A), voltage (V) and power factor values. Available for three-phase and single-phase measurement, as well as for direct measurement or via toroidal transformer. Additional invoicing functionality, resettable relative counters, etc.



LINGG&JANKE

ARCUS



They deliver water consumption values, as well as more advanced functions, such as thresholds, relative counters, etc. Available with different nominal diameters and flows. Feel free to ask our commercial staff for special-sized counters.

ENERGY COUNTERS

Web Code	Reference	Nr. Of Phases	Measurement	Max. Current Per Phase	Toroidal Transformer Required	Quadrants	Size	Listprice	G.D.
12387	87765	3	Direct	75A	NO	1	5U	279	7
12395	87773	3	Indirect	-	/1A o /5A	1	5U	279	7
12388	87766	3	Direct	75A	NO	4	5U	319	7
12396	87774	3	Indirect	-	/1A o /5A	4	5U	319	7
12390	87763	1	Direct	32A	NO	1	3U	247,5	7

WATER COUNTERS

Web Code	Reference	Nominal Flow	DN	Diametre	Length	Max. Water Temperature	Listprice	G.D.
10201	85101	1,5 m3/h	15	G3/4"	80mm	40°C	198	7
10202	85102	1,5 m3/h	15	G3/4"	110mm	40°C	198	7
10204	85111	1,5 m3/h	15	G3/4"	80mm	90°C	200	7
10205	85112	1,5 m3/h	15	G3/4"	110mm	90°C	200	7
10203	85103	2,5 m3/h	20	G1"	130mm	40°C	199	7
10207	85140	2,5 m3/h	20	G1"	190mm	40°C	239	7
10206	85113	2,5 m3/h	20	G1"	130mm	90°C	201	7
12010	85150	2,5 m3/h	20	G1"	190mm	90°C	251	7
10208	85141	6 m3/h	25	G1-1/4"	260mm	40°C	268	7
10211	85151	6 m3/h	25	G1-1/4"	260mm	90°C	280	7
10209	85142	10 m3/h	40	G2"	300mm	40°C	353	7
10212	85152	10 m3/h	40	G2"	300mm	90°C	363	7
8512	60201-75124015	1,5 m3/h	15	G3/4"	80mm	30°C	194,9	5
8514	60201-75124115	1,5 m3/h	15	G3/4"	110mm	30°C	194,9	5
8513	60201-75124515	1,5 m3/h	15	G3/4"	80mm	90°C	196	5
8515	60201-75124615	1,5 m3/h	15	G3/4"	110mm	90°C	196	5
8516	60201-75124025	2,5 m3/h	20	G1"	130mm	30°C	195,9	5
8517	60201-75124525	2,5 m3/h	20	G1"	130mm	90°C	197	5

CALORIES/FREEZERIES COUNTERS · GAS COUNTERS



LINGG&JANKE

ARCUS



The Arcus counters deliver thermal energy values, whereas the Lingg&Janke counters deliver both thermal energy and cooling values. Both devices include advanced functions. Feel free to ask our commercial staff for special-sized counters.

LINGG&JANKE



They deliver the accumulated gas consumption in m³ and litre; with advanced functions, such as relative counters, invoicing, etc. Feel free to ask our commercial staff for special-sized counters.

CALORIES/FREEZERIES COUNTERS

Web Code	Reference	Nominal Flow	DN	Diametre	Length	Probe	Listprice	G.D.
15804	84901	0,6 m3/h	15	G3/4"	110mm	Dry	450	7
15805	84902	1,5 m3/h	15	G3/4"	110mm	Dry	450	7
15806	84903	1,5 m3/h	15	G3/4"	165mm	Dry	487	7
15807	84904	0,6 m3/h	20	G1"	130mm	Dry	450	7
15808	84905	1,5 m3/h	20	G1"	130mm	Dry	450	7
15809	84906	1,5 m3/h	20	G1"	165mm	Dry	487	7
15810	84907	0,6 m3/h	20	G1"	190mm	Dry	487	7
15811	84908	1,5 m3/h	20	G1"	190mm	Dry	487	7
15812	84909	2,5 m3/h	20	G1"	190mm	Dry	487	7
15813	84910	3,5 m3/h	25	G5/4"	260mm	Dry	757	7
15814	84911	6 m3/h	25	G5/4"	260mm	Dry	842	7
15815	84912	10 m3/h	40	G2"	300mm	Dry	1055	7
9050	60101-85373106	0,6 m3/h	15	G3/4"	110mm	Dry	284,2	5
9051	60101-85473106	0,6 m3/h	15	G3/4"	110mm	Humid	284,2	5
11763	60101-85373115	1,5 m3/h	15	G3/4"	110mm	Dry	284,2	5
11765	60101-85473115	1,5 m3/h	15	G3/4"	110mm	Humid	284,2	5
11764	60101-85373125	2,5 m3/h	20	G1"	130mm	Dry	289,2	5
9402	60101-85473125	2,5 m3/h	20	G1"	130mm	Humid	289,2	5

GAS COUNTERS

Web Code	Reference	Nominal Flow	DN	Adapter	Listprice	G.D.
15767	85802	0,04-6 m3/h	25	Single	372	7
15762	85805	0,04-6 m3/h	20	Double	372	7
10182	85801	0,04-6 m3/h	25	Double	372	7
15763	85808	0,06-10 m3/h	32	Double	446	7
15764	85807	0,10-16 m3/h	40	Double	814	7
15765	85804	0,16-25 m3/h	40	Double	826	7
15766	85809	0,25-40 m3/h	50	Double	1104	7



CBSE ComBridge Studio Evolution

lpas

Visualization software pre-installed in an industrial embedded Linux PC. Also available as a virtual machine. Available in different hardware versions to match the requirements of any type of installation: from small homes to offices, hotels, airports (SCADA-like/BMS), etc.

- Flash-based web visualization for PCs or touch displays
- Fully customizable user interface: background, icons, text, colours, charts, frames, resolution, etc.
- Browsing based on desktops, windows, pages and gadgets
- Exporting of HTML pages for smart phones and tablets
- User rights and management
- It allows simultaneous connection to different independent installations from one visualization
- A KNXnet/IP Tunnelling or KNXnet/IP Object Server gateway is required to connect each installation
- Unlimited group addresses
- Weekly and annual time scheduler
- Scenes allow the introduction of delays between actions
- Alarm notification in the visualization
- Sending of alarms via e-mail
- Logic module with graphic editor, including logic gates, timers, arithmetic operations, comparators, etc.
- Data logger
- Customizable charts
- Basic energy monitoring (for a full metering solution, the Smart Metering module is needed)
- DALI module for the visualization and maintenance of systems equipped with DALI gateways (by IPAS)
- Alarms with SMS notification via VoIP systems and even push notifications in IOS/Android (using third-party software)
- Management modules for BACnet, Modbus and OPC gateways
- Data export and remote back ups
- Remote management of systems that are independent from each other. Each one controls its own scenes, alarms, etc. (with additional license)
- Virtual data points based on historic data. Access to historic data via SQL commands
- License for 3 users included
- License for 1 gateway included
- 12V DC power supply required (PSU included).

Web Code	Reference	Version
10019	63102-32-01	Server
13816	63102-32-05	Server Avanced
13905	63102-32-04	Server Avanced Racksystem

VISUALIZATION



CBSE

ipas

CBSE extension modules

Web Code	Reference	Description
10616	63102-32-50	5 additional users
10693	63102-32-51	5 additional gateways
10681	63102-32-10	Smart Metering module (up to 5 counters)
10382	63102-32-52	5 additional counters
14793	63102-32-12	Modbus module (up to 5 devices)
13770	63102-32-55	5 additional Modbus devices
15788	63102-32-13	BACnet module (up to 5 devices)
15790	63102-32-54	5 additional BACnet devices
15791	63102-32-60	Report module
13307	63102-32-30	Data base management module
15792	63102-32-11	DALI management module
15793	63102-32-53	5 additional DALI gateways



HCC HomeControl Center

lpas

The web server integrated in the device hosts the HTML visualization. No plug-ins, like flash or java, needed, which makes it compatible with any web browser of any device in the market (PC, smart phone, tablet, etc.)

- 3 different visualizations in HTML:
 1. Totally customizable visualization
 2. Visualization adapted for SMART PHONE format
 3. Visualization adapted for TABLET format
- Fully customizable user interface: background, icons, text, colours, frames, resolution, etc.
- Smart Visu: special visualization mode for smart phones based on icons; it automatically adapts to any given resolution.
- 250 communication objects and also 1000 group addresses that are independent from the former.
- Chart module with up to 10 series per chart, with or without data interpolation and polling function with read requests to the bus. Possibility to send data via e-mail in XML format by means of an event from the KNX bus.
- Monitoring module to register and save data from communication objects and group addresses. Configurable as blacklist and whitelist. Possibility to send data via e-mail in XML format by means of a telegram event from the KNX bus.
- TCP/UDP Commands module, for sending commands to IP devices with events from the KNX bus. Compatible with PJLink protocol for the control of film projectors.
- Acoustic alarms and sending of emails with the alarms log as an attachment.
- Annual and weekly time scheduler, that can be edited by the final user.
- Real time clock with NTP timer server synchronization, that can be used as KNX date/time master.
- Logic module with graphic editor, including logic gates, timers, arithmetic operations, comparators, etc.
- Scenes allow the introduction of delays between actions
- Alarm notification in the visualization.
- Sending of alarms via e-mail
- KNXnet/IP Tunnelling functionality: allows using the device as an IP programmer for the ETS.
- Integrated BCU
- Additional power supply required: 12-30VDC
- Size: 4 DIN mod.

Web Code	Reference
11066	3622-141-11



HC1i-KNX

Iddero

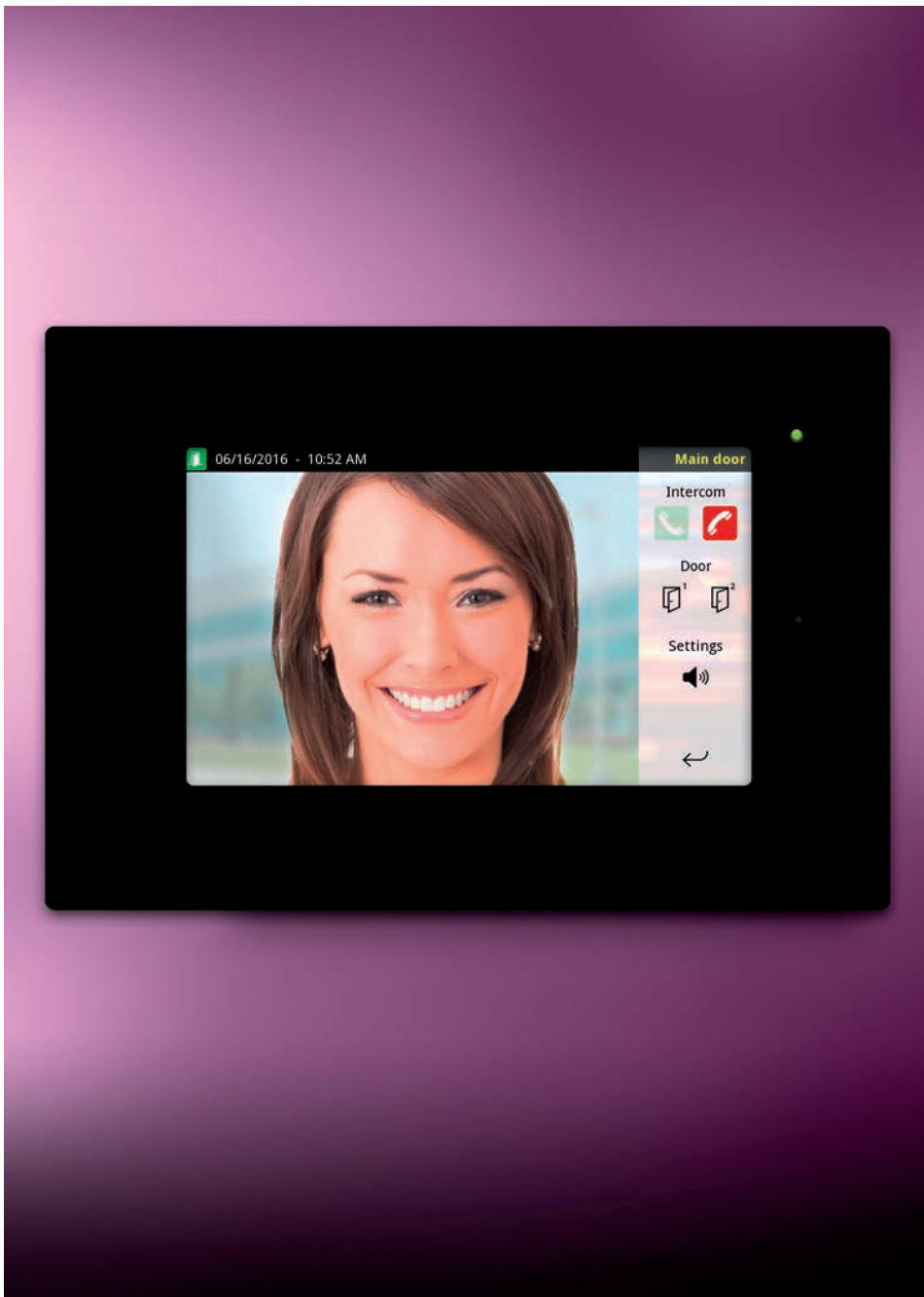
5.7" Touch Display with integrated web server

Touch displays with simple and user-friendly visualization and control interface. Its hardware has been designed to achieve maximum reliability and a fast performance without delays.

- 5.7" TFT LED Colour touch display
- Integrated web server to replicate the display's visualization in HTML format, compatible with any device (PC, tablet, smart phone, etc.)
- Thermostat functionality (external temperature probe required)
- Its user interface has been completely redesigned to ensure an innovative and fresh appearance, optimizing previous looks
- Including a renewed set of over 230 icons
- Graphic navigation via customizable sensitive areas (i.e. on floor plans)
- Scenes editable by final users, including the introduction of delays between actions
- Weekly time switches with annual periods
- Alarm monitoring with historical data
- Presence simulation with day/night timetable
- Logic functions (logic gates, comparators, time switches, arithmetic calculations, etc.)
- E-mail notifications on KNX events
- KNX time master to send date/time to the bus
- Compatible with the idderocloud service for remote access
- Integrated BCU
- 12V DC power supply required (PSU included).

Web Code	Reference	Colour of the frame
13772	DW-HC1i-KNX-G	Grey
13773	DW-HC1i-KNX-W	White
13774	DW-HC1i-KNX-B	Matt black
13775	DW-HC1i-KNX-A	Anodized aluminium

VISUALIZATION



HC2-KNX

Iddero

7" Touch Display with integrated web server

In addition to the functionality of the 5,7" HC1-KNX version, it has:

- 7" TFT LED Colour panoramic touch display
- Integration of IP cameras*
- Video-door communication function, with full duplex audio and echo cancellation*.

* Please, check compatibility with our commercial staff

Web Code	Reference	Colour of the frame
10043	DW-HC2-KNX-G	Grey
11164	DW-HC2-KNX-G	White
11163	DW-HC2-KNX-B	Matt black
10044	DW-HC2-KNX-A	Anodized aluminium

VISUALIZATION



HC2L-KNX

Iddero

10" Touch Display with integrated web server

In addition to the functionality of the 5,7" HC1-KNX version, it has:

- 10" TFT LED Colour panoramic touch display
- Integration of IP cameras*
- Video-door communication function, with full duplex audio and echo cancellation*.

* Please, check compatibility with our commercial staff

Web Code	Reference	Colour of the frame
10315	DW-HC2L-KNX-G	Grey
11166	DW-HC2L-KNX-W	White
11165	DW-HC2L-KNX-B	Matt black
11167	DW-HC2L-KNX-A	Anodized aluminium

VISUALIZATION



DW-GSM

Iddero

GSM expansion module for Iddero devices

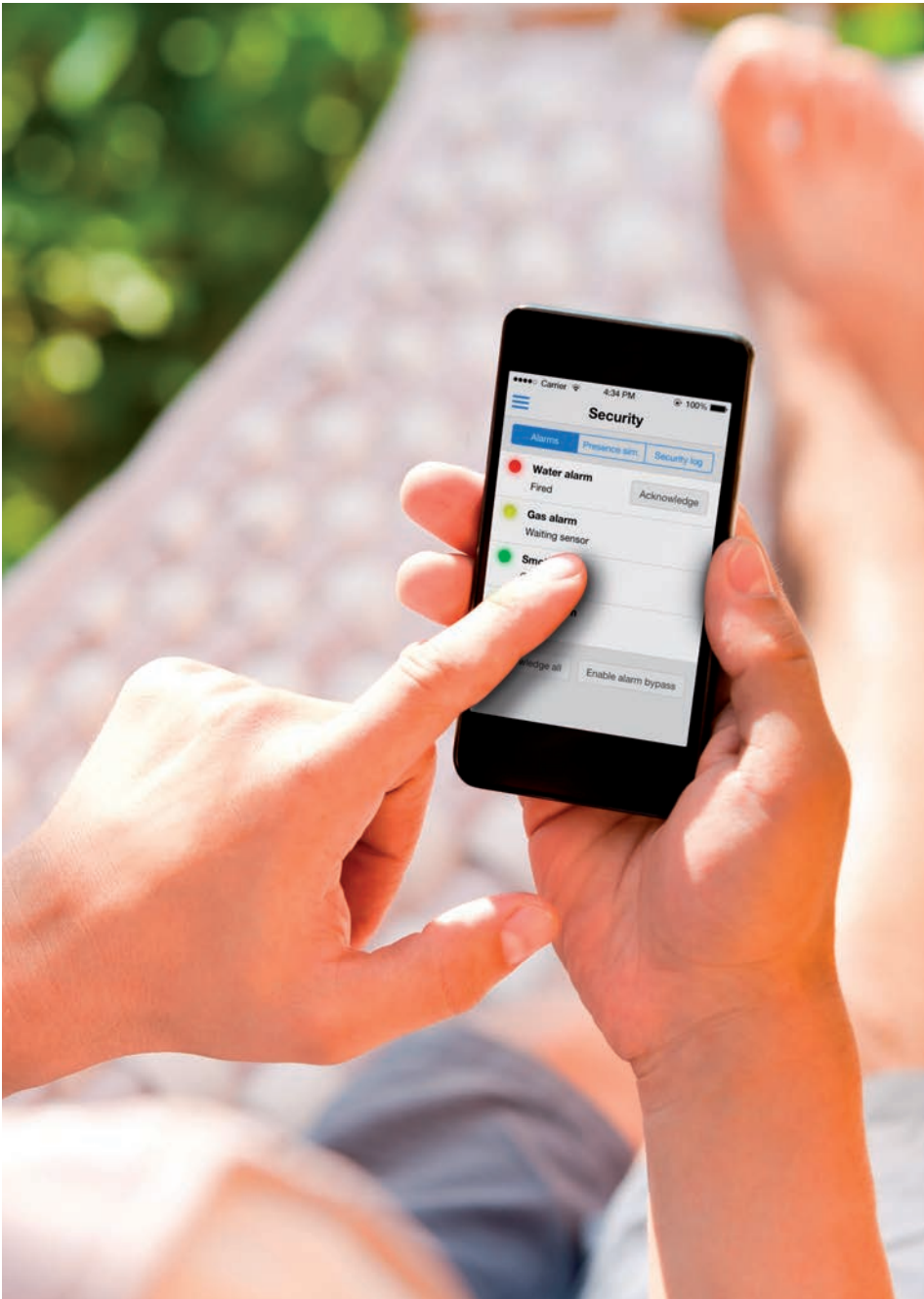
KNX system control and status alarms via SMS messaging and missed calls

- Connection to a HC1i-KNX, HC2-KNX, HC2L-KNX touch display or Iddero Home Server required
- Remote scene execution
- Control of the devices integrated in the KNX installation
- Status request via messaging
- "Missed call" functionality to avoid costs on most frequent actions
- 12 V DC power supply required.
- Size: 6 DIN mod.

Web Code	Reference
----------	-----------

9592	DW-GSM
------	--------

VISUALIZATION



SER1-KNX Iddero Home Server

Iddero

Same HTML visualization as in the HC1i-KNX, HC2-KNX y HC2L-KNX touch display's web servers

- Integrated web server with visualization in HTML format, compatible with any device (PC, tablet, smart phone, etc.)
- 8 free-configurable binary inputs, 4 of which can also be used to connect temperature probes
- Thermostat functionality (external temperature probe required)
- Its user interface has been completely redesigned to ensure an innovative and fresh appearance, optimizing previous looks
- Including a renewed set of over 230 icons
- Graphic navigation via customizable sensitive areas (i.e. on floor plans)
- Scenes editable by final users, including the introduction of delays between actions
- Weekly time switches with annual periods
- Alarm monitoring with historical data
- Presence simulation with day/night timetable
- Logic functions (logic gates, comparators, time switches, arithmetic calculations, etc.)
- E-mail notifications on KNX events
- KNX time master to send date/time to the bus
- Compatible with the idderocloud service for remote access
- Ethernet connection
- Integrated BCU
- 12V DC power supply required (PSU included)
- Size: 6 DIN mod.

Web Code	Reference
13771	DW-SER1-KNX

VISUALIZATION



TR-107-0104 7" Touch Display with integrated web server

Interra

Touch display with exceptional design and wide functionality for home control.

- 7" LCD colour touch display
- Mobile APP available for iOS and Android to acquire the full configuration of the display via reading of QR codes
- Alarm monitoring with historical data
- Caretaker services, traffic information, wheather news, RSS news, etc.
- Integration of IP cameras*
- Thanks to its camera, microphone and two speakers, it can also be used as indoor intercom system.
- Video-door communication function*
- Several frames available (black aluminium, black acrylic, stainless steel)*
- 12 V DC power supply required.

* Please, check compatibility with our commercial staff

Web Code	Reference
17440	ITR-107-0104

VISUALIZATION



ITR-110-0104

10.1" Touch Display with integrated web server

Interra

Touch display with exceptional design and wide functionality for home control.

- 10.1" LCD colour touch display
- Mobile APP available for iOS and Android to acquire the full configuration of the display via reading of QR codes
- Alarm monitoring with historical data
- Caretaker services, traffic information, weather news, RSS news, etc.
- Integration of IP cameras*
- Thanks to its camera, microphone and two speakers, it can also be used as indoor intercom system.
- Video-door communication function*
- Several frames available (black aluminium, black acrylic, stainless steel)*
- 12 V DC power supply required.

* Please, check compatibility with our commercial staff

Web Code	Reference
17304	ITR-110-0104

VISUALIZATION



HOUSEINHAND HOUSEINHAND Licenses

Houseinhand

App for smart phones and tables, available both for iOS and Android.

- Simple and clear user-interface, very easy to use
- Customizable backgrounds
- Scenes (the final user might create new scenes from the App itself)
- Video-door communication function compatible with TCS system, from Jung
- Integration of IP cameras*
- Integration of IRTrans and Global Cache
- KNXnet/IP Tunnelling gateway required for KNX connection

* Please, check compatibility with our commercial staff

Web Code	Reference	Description
13285	HIH2_BP	BASIC license for 2 devices
13286	HIH2_PP	PREMIUM license for an unlimited number of devices
13287	HIH2_LUB2P	BASIC to PREMIUM license upgrade

VISUALIZATION



Luna16 Kit

16" Capacitive multitouch display for home-automation applications

TCI

Touch display with embedded PC for the installation of any visualization and control software

- 16" TFT multitouch display, colour, 1366x768
- AMD Fusion Dual Core 2x1.0GHz
- 2 GB RAM
- Speaker and hands-free microphone
- SSD hard drive
- Ethernet
- RS-232
- USB
- Windows 10
- Mounting box included
- 24V DC power supply required (PSU included)

* Contact our commercial staff for different type of mounting or size

Web Code	Reference
----------	-----------

15787	luna16
-------	--------

GATEWAYS - HVAC, LON, BACNET, MODBUS AND ENOCEAN



Device	ME-AC-KNX-1-V2	ME-AC-KNX-1i	ME-AC-KNX-15/100	DK-AC-KNX-1	DK-AC-KNX-1i	DK-RC-KNX-1	DK-RC-KNX-1i	PA-AC-KNX-64/128
Web Code	8214	10795	9114 / 9115	9575	10952	9539	Daikin A.C.	12171/12172
For	Mitsubishi Electric A.A. (Domestic line / Mr.Slim / City Multi)	Mitsubishi Heavy Industries A.C. (FD, KX6, KXR6)	Mitsubishi Electric A.C. (City Multi) 9 to 24V DC or 24V AC	Daikin A.C. (Domestic line) Not required	Daikin A.C. (Domestic line)	Daikin A.C. (SKY and VRV ranges)	(SKY and VRV ranges)	Panasonic VRF A.C. (CZ-CFUNC2)
External Power	Not required	Not required	Bidirectional	Bidirectional	Not required	Not required	Not required	9 to 24V DC or 24V AC
Features	Bidirectional Virtual temperature	Bidirectional Control and status 4 binary inputs	Virtual temperature	Virtual temperature	Bidirectional Control and status 4 binary inputs	Bidirectional Control and status	Bidirectional Control and status 4 binary inputs	Bidirectional Full control
Capacity	1 A.C. indoor unit KNX TP	1 A.C. indoor unit	15, 100 indoor A.C. units	1 A.C. indoor unit	1 A.C. indoor unit	1 A.C. indoor unit	1 A.C. indoor unit	64,128 indoor A.C. units
Communication	KNX TP CN105/ CN92 A.C. interior unit	KNX TP CN105/ CN92 A.C. indoor unit	KNX TP G-50A/GB-50A/ AG-150A/ GB-50ADA	KNX TP S21 A.C. indoor unit	KNX TP S21 A.C. indoor unit	KNX TP Bus P1/P2 A.C. indoor unit	KNX TP Bus P1/P2 A.C. indoor unit	KNX TP EIA485 to adapter CZ-CFUNC2
Size	59 x 36 x 21 mm	59 x 45 x 21 mm	6 DIN mod.	59 x 36 x 21 mm	59 x 45 x 21 mm	71 x 71 x 27 mm	71 x 71 x 27 mm	6 DIN mod.



Device	PA-AC-KNX-1i	PA-RC-KNX-1i	DK-AC-KNX-1i	PA-RC2-KNX-1i	PA-AW-KNX-1	AK-AC-KNX-4/8/16/64	LG-AC-KNX-4/8/16/64	LG-RC-KNX-1i
Web Code	10482	10953	10952	12961	13792	12174 / 12175 / 12176 / 12177	10483 / 10484 / 9919 / 9920	15878
For	Panasonic A.C. (Etherea range)	Panasonic VRF A.C. (FS, FSM)	Panasonic A.C. (ECOi, PACi)	Panasonic A.C. (ECOi, PACi)	Panasonic A.W. (Aquarea)	Arçelik A.C.*	LG A.C.*	LG A.C. (Commercial & MultiV)
External Power	Not required	Not required	Not required	Not required	Not required	9 to 24V DC or 24V AC	9 to 24V DC or 24V AC	Not required
Features	Bidirectional Control and status 4 binary inputs	Bidirectional Control and status 4 binary inputs	Bidirectional Control and status 4 binary inputs	Bidirectional Control and status 4 binary inputs	Bidirectional Full control	Bidirectional Full control	Bidirectional Full control	Bidirectional Control and status 4 binary inputs
Capacity	1 A.C. indoor unit	1 A.C. indoor unit	1 A.C. indoor unit	1 A.C. indoor unit	1 A.C. indoor unit	4,8,16,64 indoor A.C. units	4,8,16,64 indoor A.C. units	1 A.C. indoor unit
Communication	KNX TP CN-CNT A.C. indoor unit	KNX TP Bus A/B A.C. indoor unit	KNX TP Bus R1/R2 A.C. indoor unit	KNX TP BUS A/B A.C. indoor unit	KNX TP cable for the A.W. indoor units	KNX TP Arçelik EIA485 (PMNFP14A1 or PHNFP14A0)	KNX TP LG EIA485 (PMNFP14A1 or PHNFP14A0)	KNX TP Bus BYR A.C. Indoor units
Size	59 x 45 x 21 mm	71 x 71 x 27 mm	71 x 71 x 27 mm	71 x 71 x 27 mm	70 x 100 x 28 mm	6 DIN mod.	6 DIN mod.	71 x 71 x 27 mm

GATEWAYS - HVAC, LON, BACNET, MODBUS AND ENOCEAN



Device	MD-AC-KNX-1B/16/64	FJ-RC-KNX-1i	SM-AC-KNX-4/8/16/64/128	HI-AW-KNX-1	TO-RC-KNX-1i	TO-AC-KNX-16/64	MH-RC-KNX-1i	MH-AC-KNX-48/128
Web Code	17258/17259/17260	12178	10485 / 10486 / 9921 / 9922	12179	13419	13753 / 13754	11168	11169 / 11170
For	Midea A.C. (VRF line)	Fujitsu A.C*	Samsung A.C*	Hitachi A.W. (Yutaki series)	Toshiba A.C. (Digital & VRF line)	Toshiba A.C. (VRF line)	Mitsubishi Heavy Industries A.C. (FD, KX6, KXR6)	Mitsubishi Heavy Industries A.C. (Superlink I&II)
External Power	Not required	Not required	9 to 24V DC or 24V AC	29V DC, 6mA	Not required	100 to 240V AC (50/60Hz)	Not required	9 to 24V DC or 24V AC
Features	Bidirectional Control and status	Bidirectional Control and status 4 binary inputs	Bidirectional Full control	Bidirectional Control and status	Bidirectional Control and status	Bidirectional Control and status	Bidirectional Control and status 4 binary inputs	Bidirectional Virtual temperature
Capacity	1,16,64 indoor A.C. units	1 A.C. indoor unit	4,8,16,64,128 A.C. indoor units	1 A.W. indoor unit	1 A.C. indoor unit	16,64 indoor A.C. units	1 A.C. indoor unit	48, 128 indoor A.C. units
Communication	KNX TP Bus EXY A.C. indoor unit	KNX TP RWB Bus A.C. indoor units	KNX TP Samsung EIA485 (MIM-B04A, MIM-B13x)	KNX TP Hitachi H-Link	KNX TP Bus A/B A.C. A.C. Indoor units	KNX TP Bus TCC-LINK	KNX TP Bus X/Y A.C. indoor unit	KNX TP Bus VRF (Superlink I&II)
Size	59 x 36 x 21 mm	71 x 71 x 27 mm	6 DIN mod.	71 x 71 x 27 mm	71 x 71 x 27 mm	71 x 71 x 27 mm	71 x 71 x 27 mm	215 x 170 x 65 mm



Device	IBOX-KNX-MBRU	IBOX-KNX-MBTCP	IBOX-KNX-BAC	SM-ACN-KNX-4/8/16/64	IBOX-KNX-ENO-A1/C	IBOX-KNX-LON	IBOX-KNX-AIRZONE	IS-IR-KNX-1
Web Code	8999 / 9112 / 9113	9108 / 9109 / 9110	10487 / 9111 / 9107	17251/16454/17444/17445	10489/10490	10035 / 8389 / 7840	9117	17443
For	Modbus RTU Master	Modbus TCP Master	BACnet/IP Client	Samsung VRV Nasa	EnOcean	LON	Airzone	Multiple Contact us for more information
External Power	9 to 24V DC or 24V AC	9 to 24V DC or 24V AC	9 to 24V DC or 24V AC	9 to 24V DC or 24V AC	Not required	9 to 24V DC or 24V AC	9 to 24V DC or 24V AC	Not required
Features	Bidirectional Full control	Bidirectional Full control	Bidirectional Full control	Bidirectional Full control	Bidirectional internal LCD Multiple EEP's	Bidirectional Full control	Bidirectional Full control	Control via IR codes
Capacity	100, 500 or 3000 points	100, 500 or 3000 points	100, 500 or 4000 points	4/8/16/64 indoor A.C. units	32 channels / 5 devices per channel	100, 500 or 4000 points	4CS y 32 zones per system	1 A.C. indoor unit
Communication	KNX TP Modbus EIA232 or EIA485	KNX TP Modbus Ethernet	KNX TP BACnet IP (Ethernet)	KNX TP EIA485 MIM-N10 or R1/R2 connector	KNX TP EnOcean (wireless) Freq. 868MHz, 315MHz	KNX TP LON TP/FT-10	KNX TP AIRZONE EIA485	KNX TP IR codes emitter
Size	6 DIN mod.	6 DIN mod.	6 DIN mod.	5 DIN mod.	70 x 100 x 28 mm	6 DIN mod.	6 DIN mod.	71 x 71 x 27 mm

ROOM CONTROLLERS

VERSO Iddero 4.3" Touch Display with integrated BCU and 2 independent thermostats



Stylish and compact-sized room controller with crystal front, suitable for all types of environments and decoration.

- Capacitive colour Touch Display 4,3"
- 48 functions that can be freely arranged among 6 control pages
- Additional "favourites" page, that allows the final user to select up to 8 functions
- Different colour themes available and possibility to customize background images
- Time schedules, alarm monitoring, internal scenes controller
- Two independent 2 point, PI and PWM thermostats for cooling, heating, additional cooling and additional heating
- Integrated temperature probe
- 4 multifunction inputs
- Integrated BCU
- Additional 12-30V DC power supply required

Web Code	Reference	Colour of the frame
17329	DW-VERSO-W	Blanco
17330	DW-VERSO-B	Black

Touch IT Smart Arcus 3.5" Touch Display with integrated BCU and thermostat



- Colour Touch Display 3,5"
- Manufactured in aluminium
- 48 functions that can be freely arranged among 6 control pages
- 2 point, PI and PWM thermostat for cooling, heating, additional cooling and additional heating.
- Integrated temperature probe
- Alarm management module with acoustic signal
- Weekly time schedules that can be edited by the end user
- Line and bar graphs (microSD required)
- Log of KNX telegrams (microSD required)
- Integrated BCU
- Additional 9-32V DC power supply required.

Web Code	Reference	Colour of the frame
12376	22310500	Aluminium
12381	22310501	White
12382	22310504	Black

Corlo Touch Elsner 3.5" Touch Display with integrated BCU and thermostat



- Colour Touch Display 3,5"
- Proximity sensor
- Brightness sensor
- PI thermostat for cooling and heating, PI or 2 point regulation for additional cooling and additional heating.
- 4 potential-free binary inputs available; they can be connected to temperature sensors.
- Engraved text inscriptions or customized logos available, with RGB backlighting *
- Fits Corlo frame range.
- Integrated BCU
- Additional 12-24V DC power supply required.

* Please, contact our commercial staff

Web Code	Reference	Colour
12301	70259	Brilliant black
12300	70258	White brilliant
12303	70261	Matt black
12302	70260	Matt white

Corlo Touch WL Elsner 3.5" Touch Display with integrated BCU and thermostat



In addition to the Corlo Touch functionality, also:

- Integrated WiFi
- Integration of IP cameras*
- Web page display
- Remote control from smart phones and tablets

* Please, check compatibility with our commercial staff

ROOM CONTROLLERS

Web Code	Reference	Colour
12305	70253	Brilliant black
12304	70252	White brilliant
12307	70255	Matt black
12306	70254	Matt white

Corlo Touch KNX 5IN (WL) Touch Display 5" integrated BCU and thermostat

Elsner



- 5" touch color display
- Proximity sensor
- Brightness sensor
- Thermostat PI for cold and heat and PI or 2 points for additional cold and additional heat.
- 4 free potential binary inputs suitable for temperature probes.
- 5 automatic channels, ventilation, shading, climate control and light.
- Controller of 16 scenes
- Time switches, alarm clock
- WiFi Interface (WL model only)
- Web browser (WL model only)
- IP cameras display (WL model only) *
- Allows remote control from Smartphone and Tablets (WL model only)

* Check compatibility

Web Code	Reference	WiFi	Add.Functions	Colour
18207	70481	No	No	Black
18207	70475	Yes	Yes	Black

Imini 6.5" Touch Display with integrated BCU and thermostat

Interra



- Colour Touch Display 6,5"
 - Thanks to its camera, microphone and speaker, it can also be used as intercom system
 - Temperature sensor
 - Brightness sensor
 - 2 IR sensors (infrared)
 - Integrated BCU
- vAdditional 12V DC power supply required

Web Code	Reference
17441	ITR-165-0000

SCN-RT1G Thermostat with integrated BCU and LCD

MDT

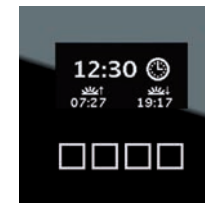


- Glass capacitive thermostat, black or white
- 4 sensitive areas: 2 for the thermostat and 2 for free configuration
- 2 point, PI and PWM thermostat for cooling, heating and additional heating.
- Integrated BCU

Web Code	Reference	Colour
14800	SCN-RT1GW.01	White
14799	SCN-RT1GS.01	Black

SCN-LCDG Thermostat with integrated BCU and LCD

MDT



- Glass capacitive thermostat, black or white
- 4 sensitive areas.
- 20 freely configurable functions via LCD.
- 2 point, PI and PWM thermostat for cooling, heating and additional heating.
- Integrated BCU

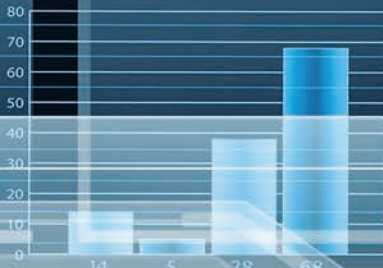
Web Code	Reference	Colour
14796	SCN-LCDGW.01	White
14798	SCN-LCDGS.01	Black

Futurasmus KNX Group, multi-brand wholesaler of KNX devices.

ABB	DINUY	HOUSEINHAND	SIEMENS
ALTENBURGER	DURA-TECH	IDDERO	SONOS
APRICUM	E-KEY	INTERRA	STEINEL
ARCUS	EGI	INTESIS	TCI
B + B	EISSOUND	IPAS	TENSE
B.E.G.	EKINEX	ISE	THEBEN
BAB TEC	ELSNER	JR-SECURITY	VIATRON
BERKER	ENOCEAN	JUNG	VIVEROO
BES	ESYLUX	LINGG&JANKE	WEINZIERL
BILTON	FIELDSERVER	MDT	WHD
BLEUCOMMAZUR	GEPRO	MEAN WELL	WOERTZ
BMS	GIRA	MERTEN	ZENNIO
BUSCH-JAEGER	GLOBALCHIP	MOXA	ZUBLIN
CABLE BUS	HAGER	NEEDO	
CJC SYSTEMS	HELIOS	OPTERNUS	
DAKANIMO	HIGHDOM	ROBIN	

INDEX

PERCENTAGE IMPACT ON THE SECURITIES MARKETS



ANALYSIS

INDEX - FUNDS

PROFIT SALES GROWTH DYNAMICS

INDEX



futurasmus
KNX TEST LAB

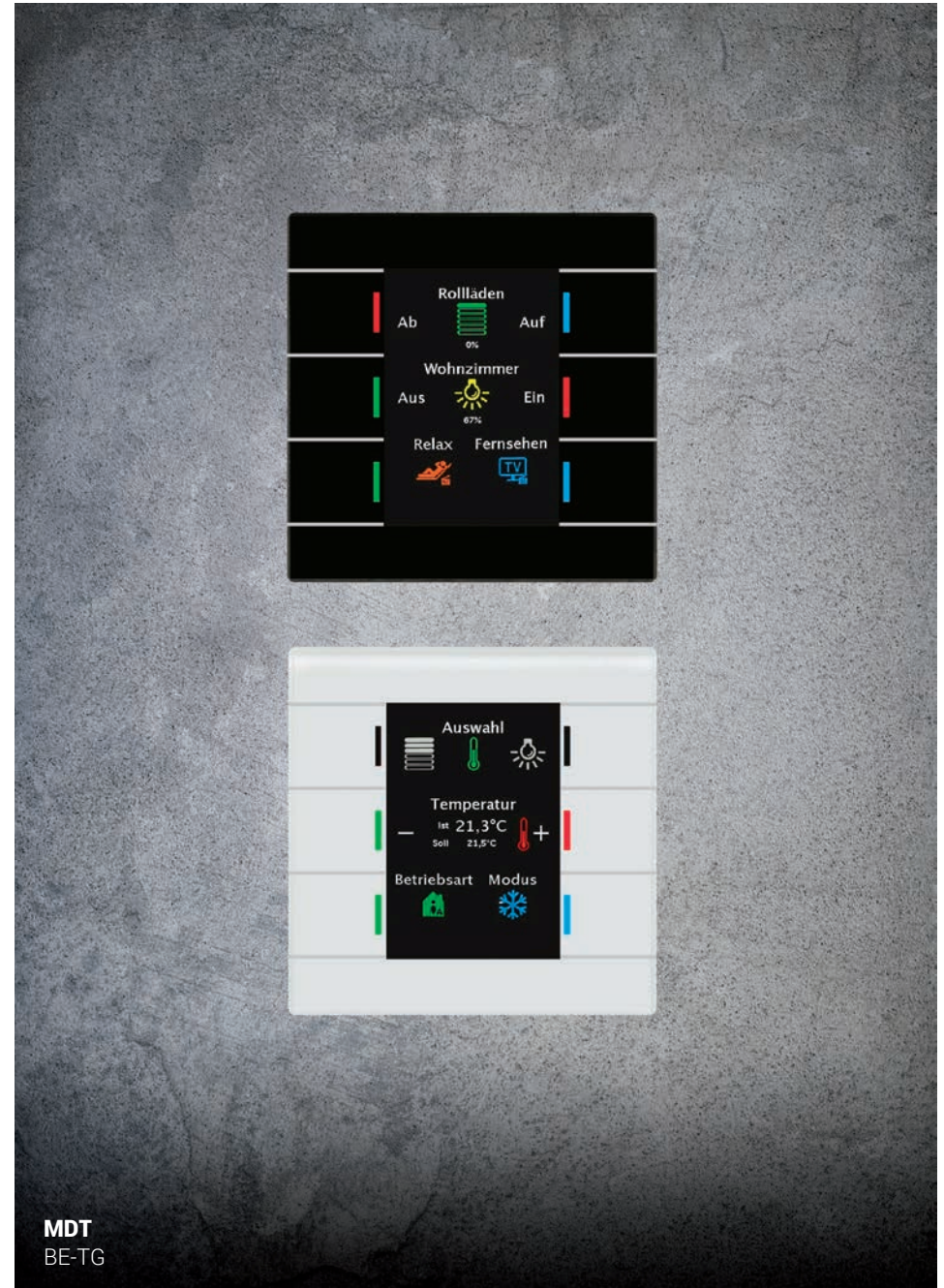
Futurasmus KNX Test Lab

Test Lab accredited by the KNXA to do the conformity and interoperability tests of the application programs of new KNX devices.

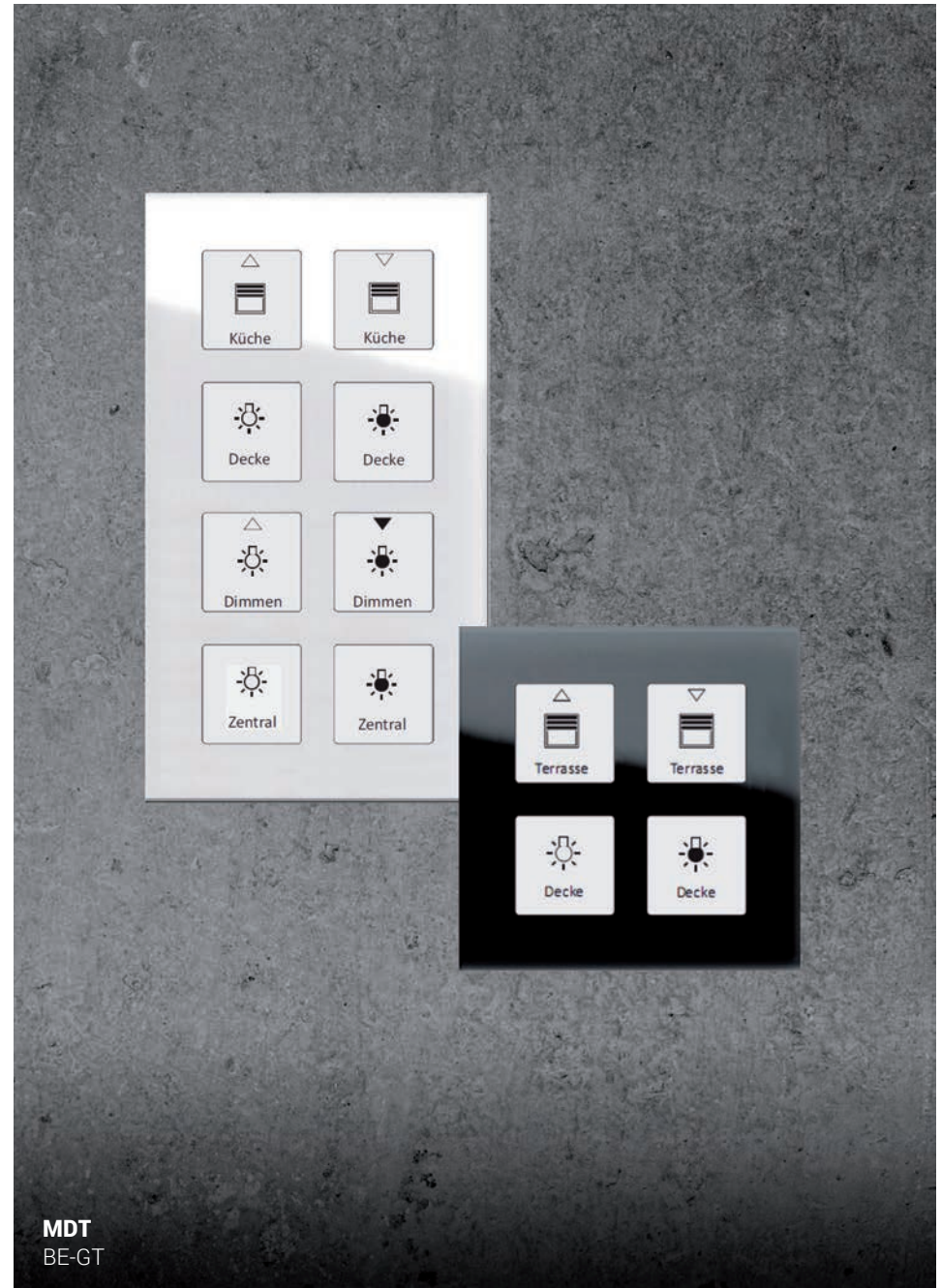
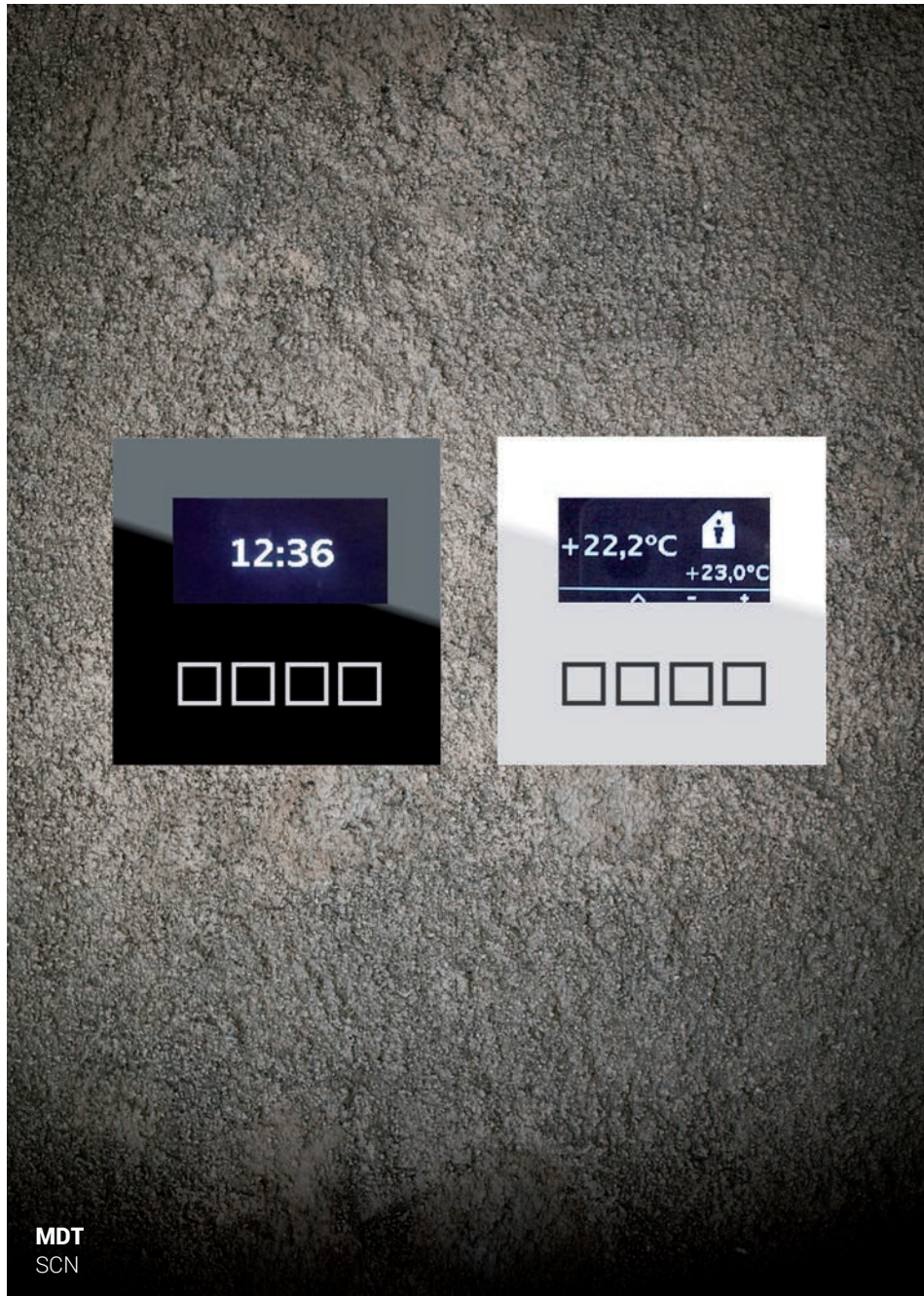
Consulting and training for new developers.

www.futurasmus-knxlab.es

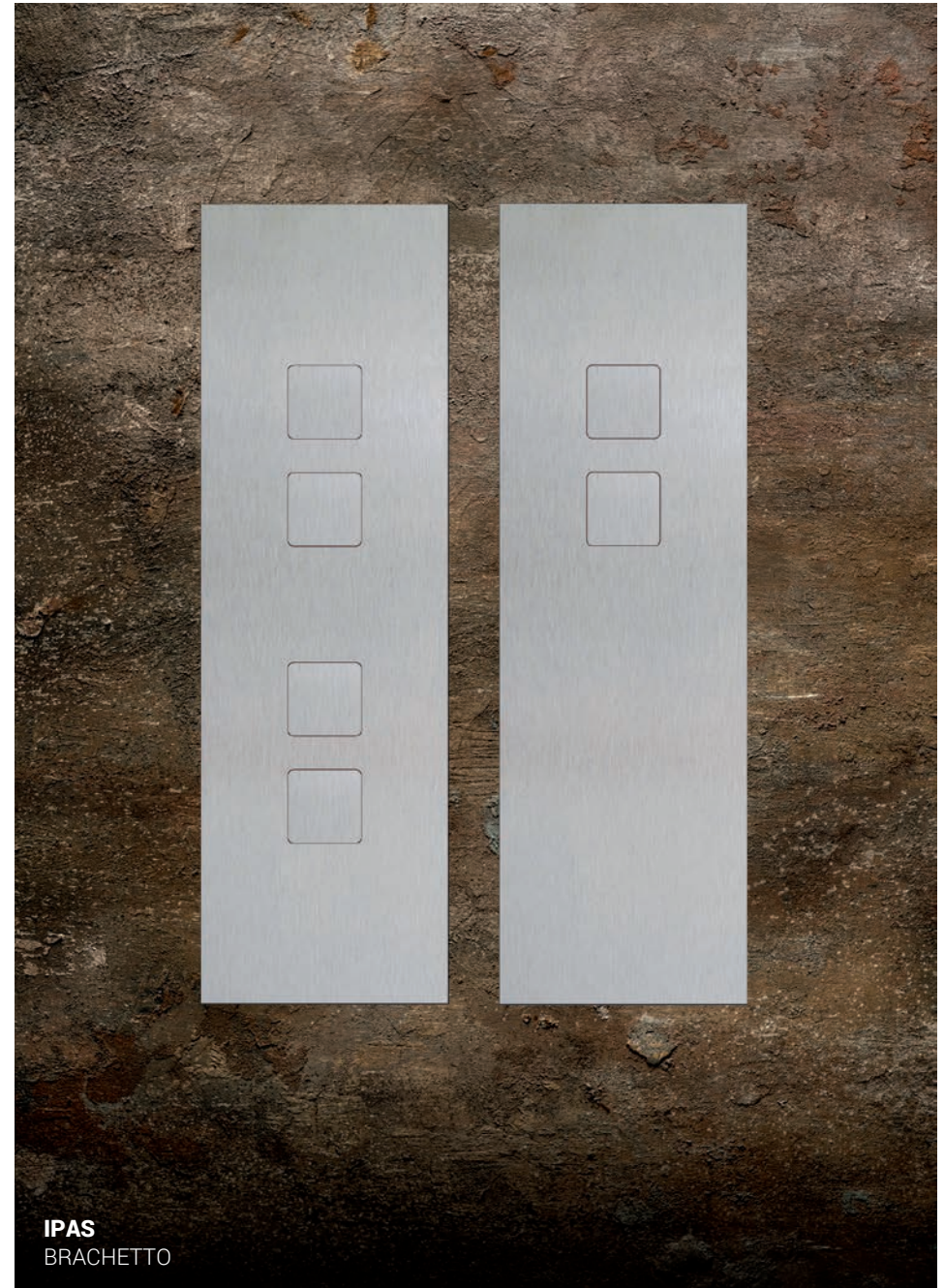
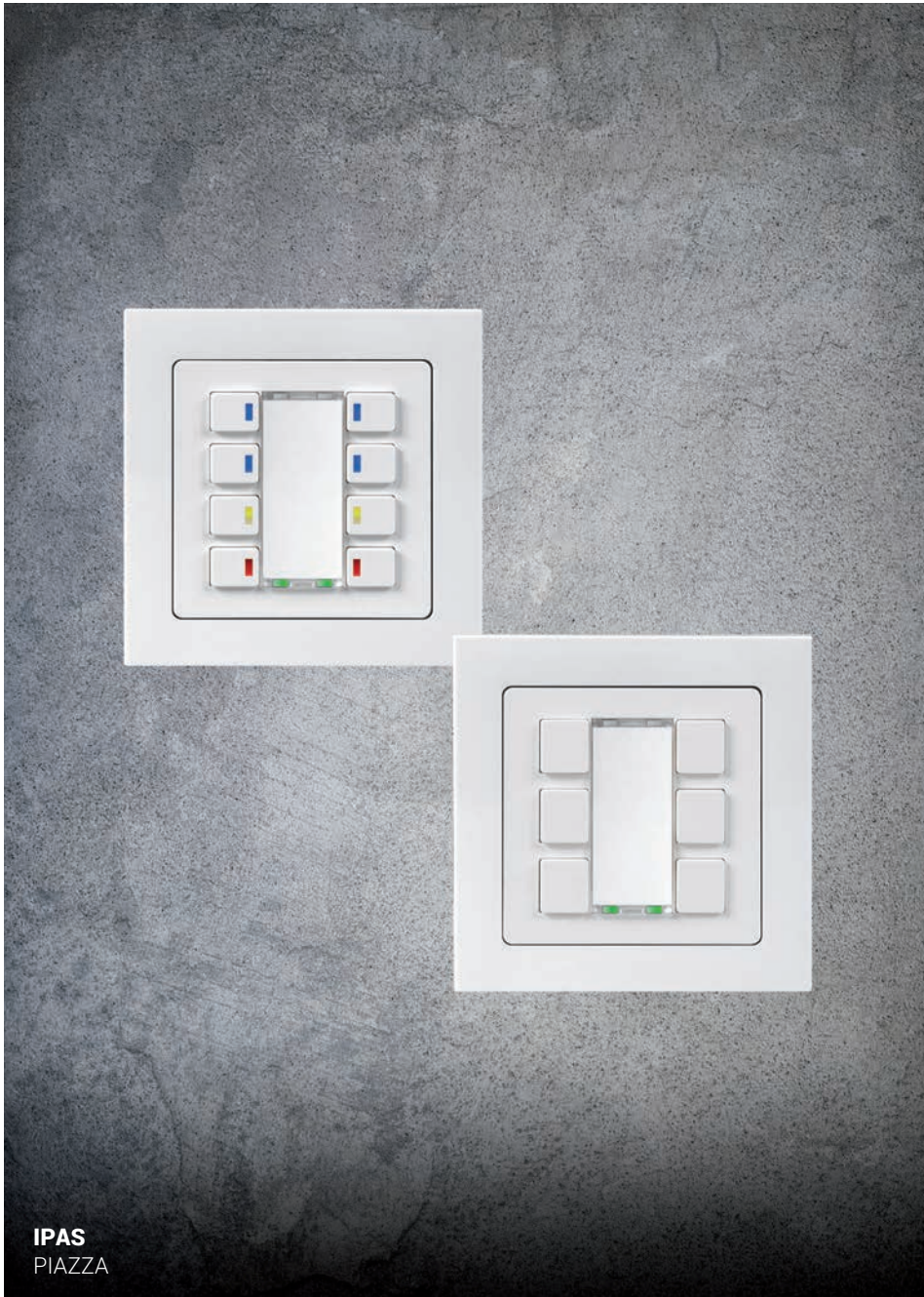
PUSH BUTTONS



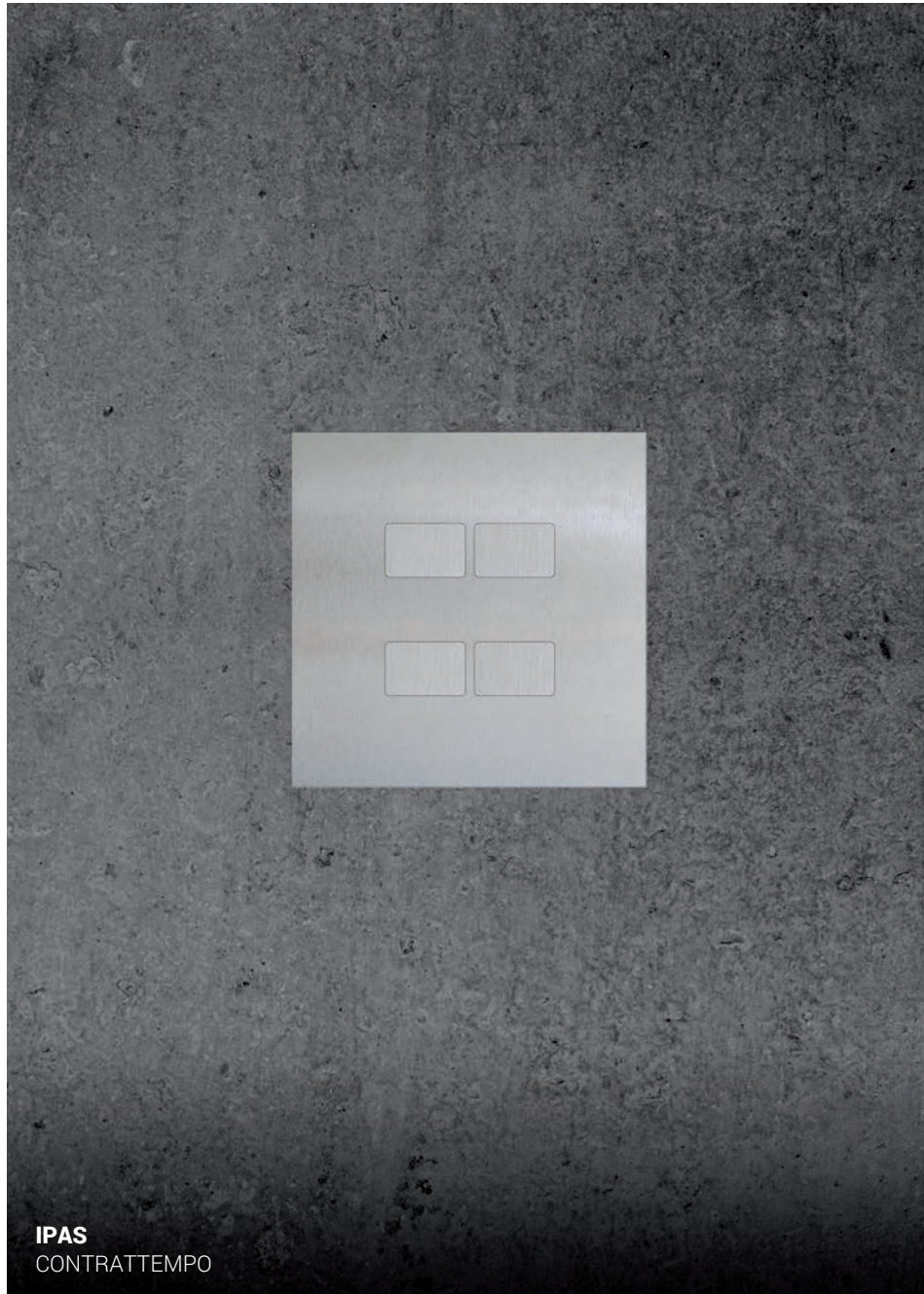
PUSH BUTTONS



PUSH BUTTONS



PUSH BUTTONS



PUSH BUTTONS



PUSH BUTTONS



PUSH BUTTONS



PUSH BUTTONS

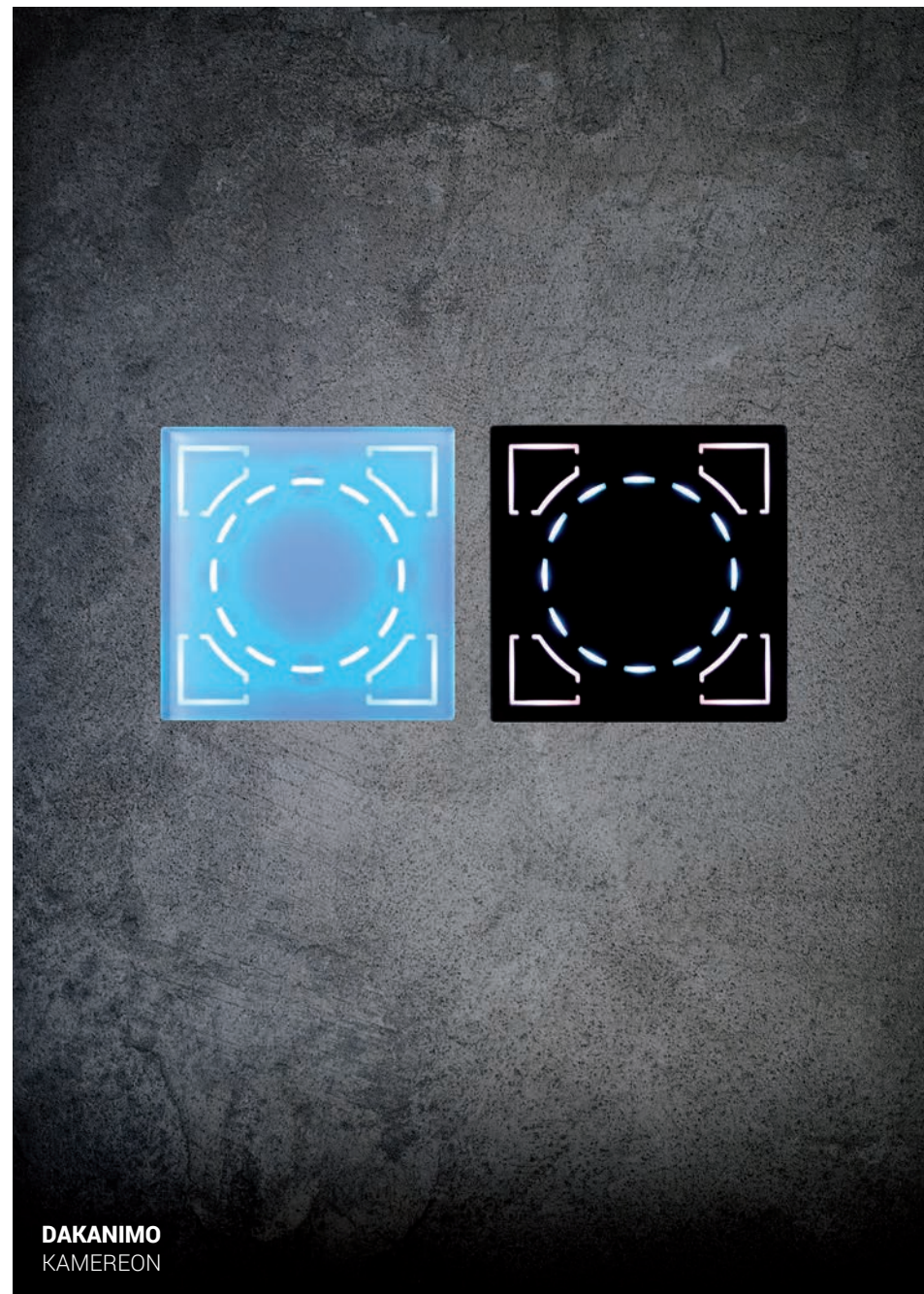
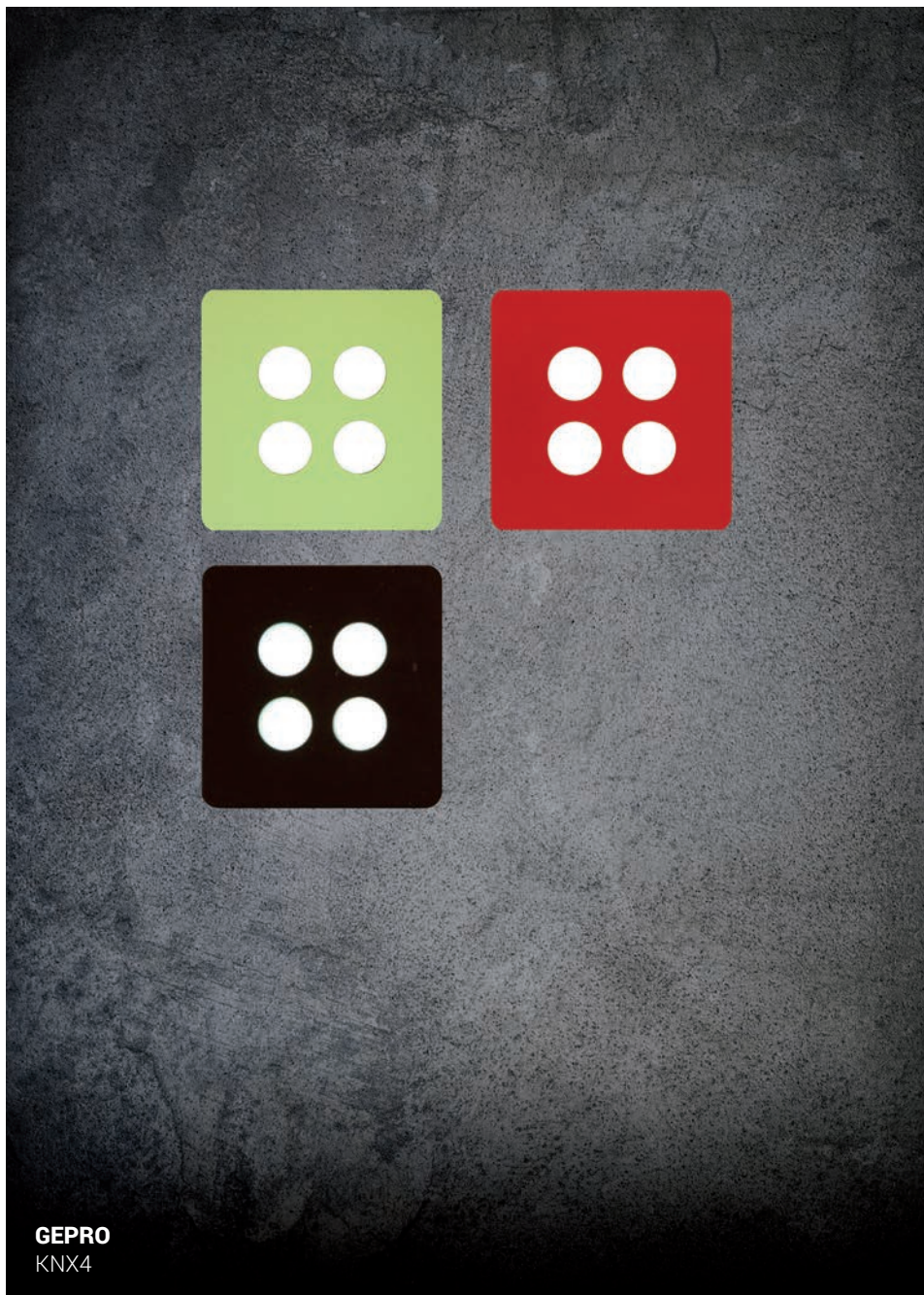


INTERRA
ISWITCH

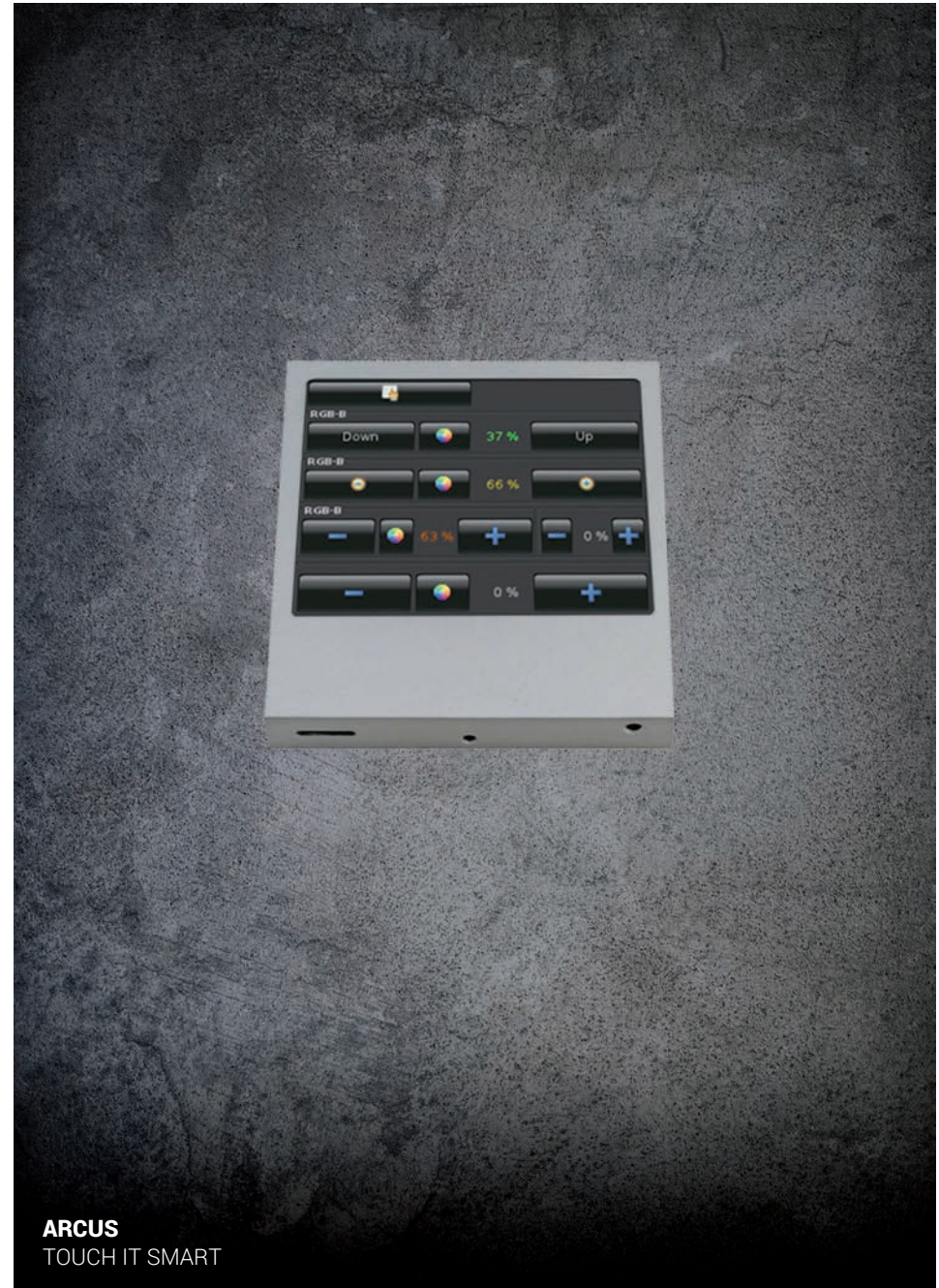


INTERRA
ISWITCH LCD

PUSH BUTTONS



PUSH BUTTONS



PUSH BUTTONS



ELSNER
CORLO TOUCH



OPTIONS TO MAKE YOUR PURCHASES OF KNX DEVICES IN FUTURASMUS

- Traditional procedure as a wholesaler:

- Personal commercial support to select the KNX devices you need
- Purchase confirmation per email or fax
- Usual market payment methods adapted to the needs of your compan
- Also, on-line, non-binding quotations via: www.futurasmus-knxgroup.com

- Order processing on-line tool for registered clients:

- Only for registered clients (freelances or companies)
- Fast and easy, including on-line personal account for shipment tracking
- Advance payment (bank transfer or credit card)
- Additional discounts in all your purchases to be redeemed in your next order

And, of course, allways the best technical supportss.

Futurasmus KNX GROUP ESPAÑA

C/ de la Nit. 1, Bloque 7, Local 1

03110 Mutxamel (Alicante)

T: +34 965959511

F: +34 965959172

E: info@futurasmus-knxgroup.com

www.futurasmus-knxgroup.com

www.futurasmus-zentrum.es

www.futurasmus-knxlab.es