

5/16 INTESIS GATEWAYS CONFIGURATION WITH LINK BOX

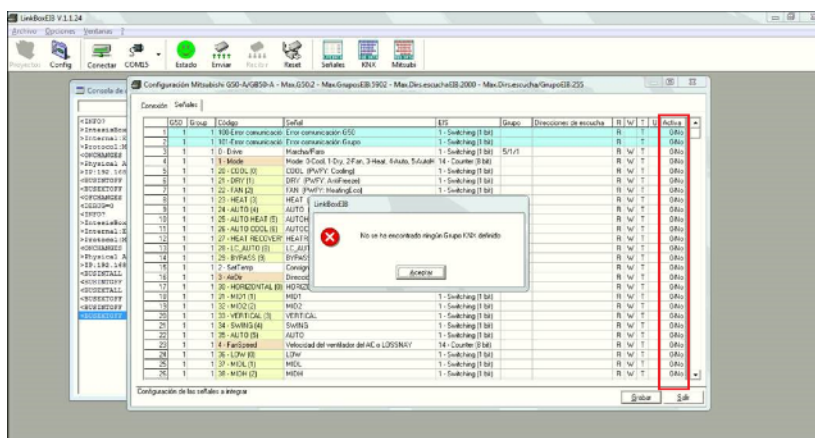
A very common failure using LinkBox for Intesis gateways configuration, it is not to activate the signals which are going to be used, getting an error when the associations of the group addresses are loaded.

To avoid it, do not forget:

- Open the "Signals" table
- Select the "Active" column
- Activate the signals that interest you with a "Yes"

Intesis offers us a wide range of robust, reliable and easy to set up gateways for the integration of climate (universal, Daikin, Fujitsu, LG, Mitsubishi Electric, Panasonic, Toshiba, Samsung,

Sanyo, Hitachi, General, Arçelik, Fuji Electric, Haier, Hisense, Hiyasu, Midea, ...), as well as different protocols (BACnet, Modbus, LonWorks, M-Bus, EnOcean and ASCII).



You can see the full range of Intesis products at the following link:

<http://www.futurasmus-knxgroup.com/fabricante.php?fabricante=61>

6/16 DO YOU WANT TO CHECK THE MAC OF YOUR CBSE BY REMOTE ACCESS?

You have 2 options:

- If port 8181 is open

<IP_address>:8181/license.php

- If port 8181 is not open

Via TeamViewer installed in the CBSE, access to the internal web browser of the CBSE:

<IP_address>/license.php



7/16 QUADRA - SHADING CONTROL SHUTTER WITH BLINDS

There is no doubt the shading control is essential in the design of a system which looks for energy efficiency, improving the quality of natural lighting inside the rooms and saving on HVAC. That is why today we share an example of configuration of shading control for shutters with blinds with the Quadra weather station from BMS.

- From the application program, enabling shading programmes, we will set for a luminance below 30KLux the shutters will be raised, while above 30KLux the shading programme will get into operation.
- The shading programme will control the slats angle considering the elevation and angle of sunlight. For it we will select the standard program already preconfigured.
- The next step will be to determine sectors depending on the facades to be controlled. It has been considered it is a house with 4 facades and orientation N, E, S and O, which it must be linked with the configured shading programme.

8/16 DO YOU WANT TO KNOW HOW TO MAKE THE BASIC CONFIGURATION IN YOUR MOTION DETECTORS OF THE MDT SCN SERIES?

GENERAL SETTINGS (submenu)

- Basic setting of sensitivity:
- Release sensitivity for day -> Adjustment of sensitivity after release in standby (no motion detected) when Day/Night is in Day-mode.
- Release sensitivity for night -> Adjustment of sensitivity after release in standby (no motion detected) when Day/Night is in Night-mode.
- Presence sensitivity -> Adjustment of sensitivity after first movement was detected.
- Release of push button input (after presence and follow-up time)
- Follow-up time for push button -> Follow-up time after receiving "1" via object "3 - external push button short" or "4"
- - external push button long"

LIGHT CHANNEL (submenu)

- Follow-up time -> Time during which the channel will be active after the last motion detection.
- Channel mode
- Fully automatic -> Switches directly after detection.
- Half automatic (manual switching) -> Output is switched via the object "3 - external push button short" and turns OFF after ending of the follow-up time.

