



futurasmus
KNX GROUP



WWW.FUTURASMUS-KNXGROUP.COM

light+building

Top Selection of New **KNX** Devices

FUTURASMUS KNX GROUP, YOUR SPECIALIZED WHOLESALER

2016

The Futurasmus KNX Group kindly invites you to read and enjoy our own selection of the best KNX devices presented during the light+building 2016 (as we have been doing since 2010).

Thanks to the KNXA for their huge effort, to our partner-manufacturers for always being pioneers in KNX and to our clients for their continuous support! All in all, a very prosperous fair!

The international Futurasmus Team was at all times available:

At the KNX IoT City...

... successfully presenting a ground-breaking solution for online KNX training worldwide (soon to see the light).



At the Iddero Booth...

... introducing, together with Mr. Rodríguez and Mr. Maldonado, some of the most innovative solutions in KNX displays.





ABB	04
ARCUS	04
B.A.B-TECHNOLOGIE	05
B.E.G	05
B+B AUTOMATION	06
BEMI	06
BES KNX	06
BILTON	07
BMS	07
CJC SYSTEMS	07
CONTROLTRONIC	08
DINUY	08
EISSOUND	08
EKEY	09
EKINEX	09
ELSNER	09
ENERTEX	10
ENNO	10
FUNCTION TECHNOLOGY AS	11
GIRA	11
HAGER	11
IDDERO	11
INTESIS	12
IPAS	13
ISE	14
JUNG	14
LINGG&JANKE	14
MDT	15
SIEMENS	16
STEINEL	16
TAPKO	17
TCI	17
TENSE	18
U::LUX	18
VIVEROO	18
WEINZIERL	18
YÖNNET	19
ZÜBLIN	20
ZF FRIEDRICHSHAFEN AG	20



IPS/S3.1.1

IP KNX Gateway that allows 5 KNXnet/IP Tunnelling connections. No additional power supply needed, since it is supplied through PoE (Power over Ethernet).



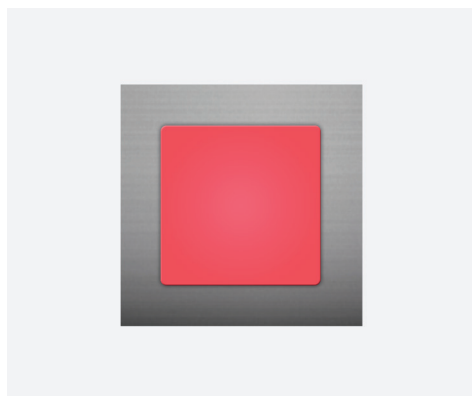
IPR/S3.1.1

This IP Router has a KNXnet/IP Routing functionality to couple different lines/areas in a KNX system, using an IP network as the main line and/or backbone. Additionally, it offers 5 KNXnet/IP Tunnelling connections. No additional power supply needed, since it is supplied through PoE (Power over Ethernet).



HVAC 305

New temperature, humidity, VOC (volatile organic compounds), CO2 (carbon dioxide) and brightness sensors. Different versions available to meet all needs (depending on the mounting type and the IP protection level).



KNX-LED

LED lamps controlled via KNX bus and powered at 24-32VDC. Available in different models: warm white / cold white, RGB, RGBW, square and round style variants.



DMX-KNX Gateway

New version of the DMX-KNX gateway that allows the same control functions as before, but is now available in DIN rail format and is also smaller (only 2 DIN Units).



KNX-IP Gateway

This IP Router has both the functionality of KNXnet/IP Routing and KNXnet/IP Tunnelling connection. We can highlight the following features: group monitor via HTML, bus monitor, NTP time server, data logging in SD card and possibility to generate charts with the registered data, SSL to secure SSH/SFTP, etc.

B.A.B-TECHNOLOGIE



JOB EDITOR

The new eibPort's Job Editor has an graphic user interface and is more powerful than its predecessor. It includes smart functions to create, import and export group addresses. It also offers a simulator to verify the result of our complex scenarios before having them transferred to the eibPort. On top of that, there is a record of historical data for the purpose of checking and restoring previous versions.

B.E.G



INDOOR 140-L

KNX Presence detector for wall box with integrated push button. 2 LED brightness levels available (night light and orientation light).



KNXGuard

This device protects end-users against attempts by non-authorized persons to program or monitor their KNX system. Additionally, it can be configured to send an alarm to a group address when such an attempt occurs.

BEMI



KNX Tool

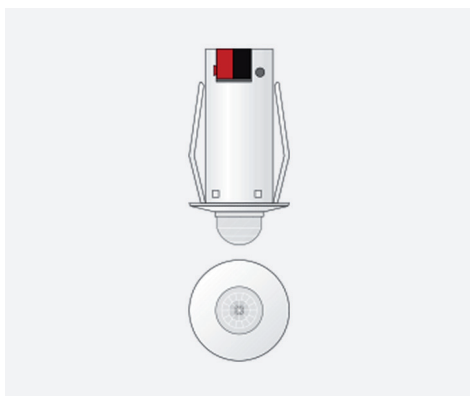
BEMI offers a unique solution to create, manage and follow up your KNX projects. On top of that, detailed report to hand out to your clients, including the full functionality of the KNX system, can be generated.

BES KNX



DALIK-BRD

Gateway range for the control of DALI luminaries from KNX. There are 3 models available: 1, 2 and 3 channels for the control of 64 DALI ballasts via broadcast commands. It includes 1, 2 or 3 binary inputs respectively to control the channels via standard push buttons.



SifLUX-K

Movement detector with very small dimensions and constant light regulation. Detection range: 50 m at 2,5 m high. Temperature sensor included.

BILTON



SXT KNX LED

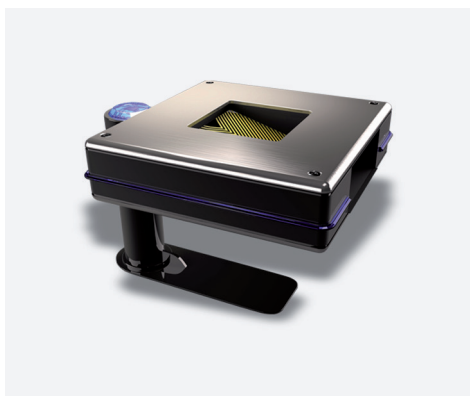
This new device combines a 100W power supply and a dimmer. Thanks to its master/slave function, for each master up to 20 devices will replicate the former's functionality. The programming time can be drastically reduced when compared to its predecessor. It includes different sequences of colour and each channel can be controlled independently.



BASIC Series

4-channel dimmer with constant voltage. It is much smaller than the previous version and the max. current per channel has been increased to 2.5A per channel.

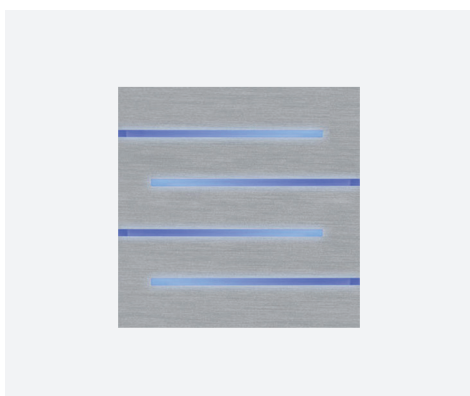
BMS



Quadra

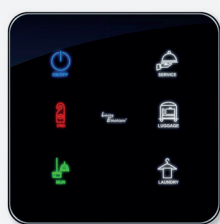
The Quadra Weather Station, on top of measuring the wind speed, it can provide us with information on the wind direction by using an ultra-sound sensor. This sensor has been redesigned in this new version to be more precise. It also measures solar radiation, temperature, rainfall, brightness in all directions, sunset and GPS position. It can control up to 4 independent façades. These are only a few of the main features of this weather station.

CJC SYSTEMS



Lucia

New push-button series with 1, 2 or 4 touch-sensitive areas for light control, dimming, shutter/blinds, scenes, etc. LED backlit and available with and without temperature probe. Manufactured in steel, with different high-end finishings.



KNX Glass Push Button

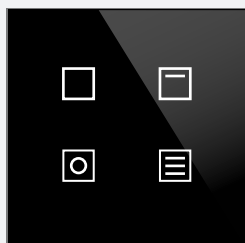
Innovative push-button series named Living Emotions®: attractive design based on a ultra-thin capacitive glass. With a special magnetic fixing system, they can be printed according to our project's needs. Other features: status RGBW LED, proximity detector. Different versions between 1 and 7 touch areas.



iPad/iPod Frame

Wall mounting frame for iPad mini4, iPad Air 2, iPad PRO and iPod. Same design as that of the push buttons from the Living Emotions® series and also same magnetic fixing system. Available in white and black colour.

DINUY



Laüka

WiFi Surface mount Speaker available in two versions: 30 and 50W. Thanks to its own APP, you will be able to control the music and the streaming services from your PC, Smart phone or tablet (iOS / Android). Multiroom of up to 10 zones. No KNX integration.

EISSOUND



SoundArouned SA

WiFi Surface mount Speaker available in two versions: 30 and 50W. Thanks to its own APP, you will be able to control the music and the streaming services from your PC, Smart phone or tablet (iOS / Android). Multiroom of up to 10 zones. No KNX integration.

EKEY



CV KNX RS-485

Compatible with Ekey home and Ekey multi. An event is sent to the KNX bus when an access takes place via the fingerprint reader.

EKINEX



Complete range of fan coil actuators

Complete range of actuators for the control of fan coils with 3 speeds and 2 pipes, 3 speeds 0-10V with 2 or 4 pipes. With 2 potential-free inputs that can also be used to connect NTC temperature probes.

ELSNER



Salva KNX

KNX smoke detector. It has a local warning and sends notifications to the bus. Available in two versions: the basic one is only a smoke detector, whereas the SALVA KNX has also got temperature sensor, humidity, air pressure and thermostat control.



Cala KNX

Sensor with touch display available in different versions so as to meet every need. Each reference has got one or combines two or more of the following sensors: temperature, humidity and CO2. Moreover, it has 4 binary inputs, also to be used for an NTC temperature probe.



KNX P RF

1-fold or 2-fold KNX RF Push Button. No power supply needed, since power is supplied by a solar panel that is integrated in the rocker itself and a 3V battery for emergency response.

ENERTEX



ENA

This device allows a safe access to the domestic network via Internet: with dynamic DNS and HTTPS and reverse proxy, it safely protects the Internet connection (web servers of the domestic network) using a password; this allows the connection even if you do not know the IP address.



KNX Energy meter

3-phase energy meter with bidirectional measuring of active and reactive energy up to 85A (4 quadrants). It sends the following values: voltage, current, active power, reactive power, power factor, THD, harmonics, voltage unbalances, etc. All these values can be sent to the KNX bus and saved in an SD card.

ENNO



PANNOS

Controller for lighting, HVAC, shutters/blinds, etc. It includes temperature, humidity and brightness sensor; also, IR receiver, movement detector, voice control in different languages and an APP for remote control.



MULTICONTROLLER

Multifunction controller in one device for the control of offices, commercial buildings and hotels. Thanks to its compact design, it is optimal for false ceiling mounting. Complemented by DALI outputs, relay outputs, inputs, etc. Compatible with WAGO connectors for an fast and easy mounting. Different versions available as required by the project.

GIRA



L1

Logic module with graphic editor for the creation of own logic in a very fast and simple way. It includes multiplexers, timers, comparators, converters, arithmetic functions, sending of telegrams per mail, alarms, blocking, thermostat, etc. On top of that, it has a simulator to verify the correct operation of our logic, which can spare us some time at the commissioning.

HAGER



TXM Series

New multichannel actuators for lights or shutter/blinds, with 20, 16 or 12 freely configurable outputs. They all have manual control.

IDDERO



IdderoCloud

Final users will be able to access their Iddero products remotely so as to control and monitor their home at any time from anywhere. Connecting to the idderocloud service is extremely easy. The user just needs to create an account in www.idderocloud.com and activate this service in his/her Iddero product. Forget about static IP addresses, DNS services, forwarding of ports...; it is also not necessary to modify the configuration of your router at home at any time.



Verso

Room controller with 4,3" touch capacitive display. Available in black and white. Designed for wall mounting by means of universal wall box (both horizontally or vertically). 48 configurable functions can be freely arranged in 6 control pages, one favourites page with 8 fast-access functions, touch gestures, etc. It includes functions such as time schedules, alarms, internal scene controller and two independent thermostats. Moreover, it has 1 integrated temperature probe and 4 multi-function inputs.



HC1i, HC2 y HC2L

The user interface of the HC1i, HC2 and HC2L touch displays has been completely redesigned, including a totally refreshed appearance, the possibility to set background images for each zone, a new set of 300 icons for the user to choose from, support for the idderocloud service, etc.

INTESIS



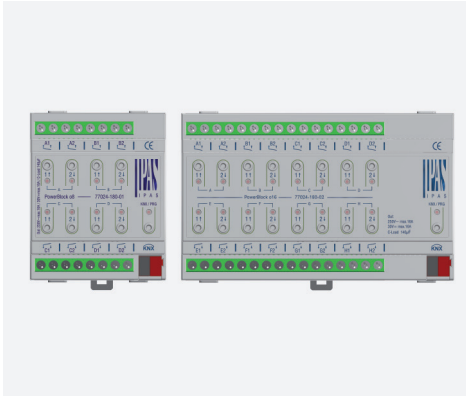
KNX BACnet Gateway

The new gateway maintains the best features of its predecessor and adds new improvements. Among them, we can find B-ACC (Advanced Application Controller) on the BACnet side, complete support of DPTs, the possibility to import the KNX project from the ETS, LED indicators with status information. The configuration software has been redesigned to make configuration even easier.



IS-IR-KNX-1

This gateway must be installed next to the air conditioning device and allows control and monitoring of the system via IR codes. Additionally, it has an IR receiver that can capture the changes made by the user via the device's IR remote control and send the statuses to the KNX bus. Compatible with more than 40 different air conditioning brands.



Powerblock Actuator Series

New series of multifunction actuators (on/off and shutters/blinds) in DIN rail format and very competitive price. These actuators magnificent functionality include, among other features, multiple advanced functions per channel, advanced logic independent from the channels, KNX scenes, alarms, etc... This new range consists of 2 actuators of 8 and 16 channels, with 16A capacitive relay outputs (140µF).



640mA Power Supply

Very small KNX 640mA power supply (only 3 DIN rail units). It has an auxiliary unfiltered output and 3 status LEDs to indicate operation modus: normal, overload or reset.



KNX-DALI e64 Gateway

This new gateway improves the functionality of the KNX-DALI and allows controlling the colour of ballasts compatible with DALI Type 8. The advantage of using these ballast is that they use only one DALI address.



ComBridge Home Control Center

IPAS has improved their well-known HCC web server by adding a wider functionality. We can highlight the possibility to display graphics by using the data stored during one year; it has a supervision module that can save up to 1000 telegrams and allows sending them via e-mail in Excel format; extension of its SmartVisu to the TabletVisu (visualization designed for tablet devices) with the possibility to add images and new navigation modules; supports the PJLINK protocol to control projectors, sending of TCP/UDP/HTTP commands, new RGB, RGBW, HUE control elements, etc.



KNX AXIS

Axis cameras support the installation of third party APPs. These APPs generate "Axis trigger objects", that can be used to warn about events registered by the camera and/or control the camera's functions. The "SMART APP KNX AXIS" by ISE, once installed in an Axis camera, has got 20 KNX objects that can be linked to any of the "Axis trigger objects", 10 1-bit objects to control the camera's functionality and 10 additional objects of more DPTs (1 bit, 1 byte, ...) to send the camera's events to the KNX. This allows for a total integration of the functionality of Axis cameras in the KNX bus. Only a few examples: sending telegrams with movement detection in the multiple zones predefined in the camera's image, tamper detection, triggering e-mail sending as defined in the camera, PTZ, video recording, etc.



KNX Vaillant

Thanks to this gateway, it is now possible to integrate the Vaillant heating system. We can control several zones, the setpoint temperature, sanitary hot water and ventilation. Also, the following data can be sent to the KNX bus: system information, error messages, maintenance mode, system status, outside temperature, etc.

JUNG



F 50 KNX Compact room controller

New room controller with display for the KNX F 50 family, already available. On top of its already well known and very complete functionality, it now also has a 2nd built-in temperature controller. Using the two built-in temperature controllers and connecting any extension module of the F50 series, the temperature of two rooms may be exclusively controlled in parallel. An external sensor may be optionally connected for radiant floor, for instance. RGB status LEDs assist the user in assigning functions. Versions: 2-gang and 4-gang. Available in the same design as of the A and CD/LS ranges (please, note small divergences due to different display size).

LINGG&JANKE



eibSOLO and eibDUO Range

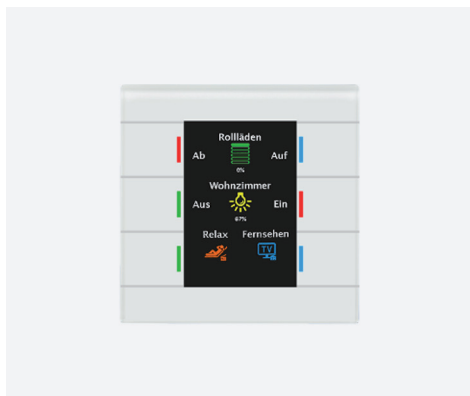
The application program of the eibSOLO and eibDUO actuator range has been updated and improved. The new application program supports up to 32 scenes per channel and run-hour counter; warning and blocking functions have been completely renovated, etc.



Universal Interface TSxF-2-U

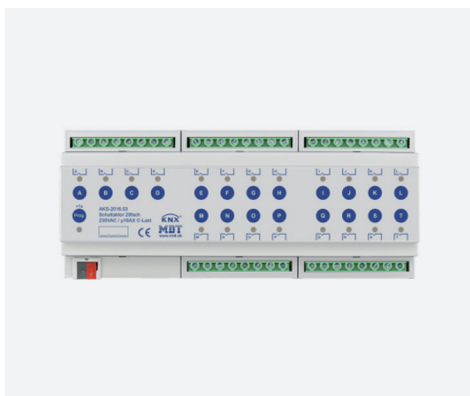
Complete series of push button interfaces with a very attractive price. The range includes 3 versions. 4 channels, 8 channels and 4 channels with the possibility to have one LED powered by each binary input.

MDT



Glass push button II Smart

The Glass push button II Smart stands out for its big color display, indicating both function and status. Icons and text might be selected for each rocker. The two top buttons can be used to select the operational levels directly; the other 4 buttons can be reserved with 2 or 3 operational levels (8/12 channels). It can also be used as a 6-fold push button, not making use of the different levels.



New generation of actuators

MDT has improved its whole actuator range, that has now a news design and extended functionality. Among the improvements, we can highlight the run-hour counter, the possibility to define thresholds, more functionality within the logic, etc.



Uninterrupted Power Supply

This UPS integrates two power supplies so as to gain reliability. In case one of the power supplies failed, the KNX bus voltage would remain stable thanks to the second power supply. The diagnostic function will send information on the voltage, current consumed, overload or bus failures. All these events are stored in an internal memory, including date and time.



Glass Push Button

The new range of capacitive glass push buttons includes 2-, 4- and 8-fold push buttons. The surface of the rockers has got a LED ring that can be set to any of the 7 available colours. Additionally, they have a very useful proximity sensor meant to be used in very dark environments. Available in black and white.



IP Control Center

Siemens has optimized their IP Control Center web server and provided it with extended functionality. We can highlight the possibility to display graphics by using the data stored during one year; it has a supervision module that can save up to 1000 telegrams and allows sending them via e-mail in Excel format; extension of its SmartVisu to the TabletVisu (visualization designed for tablet devices) with the possibility to add images and new navigation modules; supports the PJLINK protocol to control projectors, sending of TCP/UDP/HTTP commands, new RGB, RGBW, HUE control elements, etc.



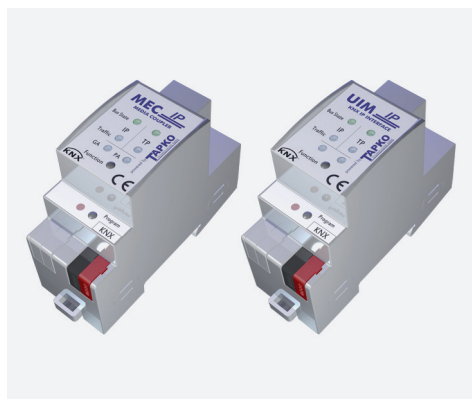
DualTech KNX

Double-technology Presence Detector equipped with one IR and one ultrasound sensor. Thanks to the ultrasound waves, we can fill in the room totally and it can detect movement even behind objects.



HPD 2 KNX

Camera based Presence detector that keeps on making analysis every 3 seconds. It can detect and count people and groups of people whether they are sitting, standing or moving. Another advantage is that it only detects people, so that it can be installed in those places where there are animals, still avoiding false detections. On top of that, it has a temperature and humidity sensor.



UIM- KNX IP and MECip

Both the KNX IP Programmer and the IP Router are the first devices in their class that do not need any power supply (neither external nor PoE); they are powered directly from the KNX bus.



KNX Power Supply

Smallest KNX 640mA power supply (only 2 DIN rail units) in the market. With auxiliary unfiltered output 30V DC. Diagnostic functions, including sending the consumed current to the bus, the output voltage, the internal temperature, run-hours, the possibility to have the power supply remotely reset, etc.



Iluna

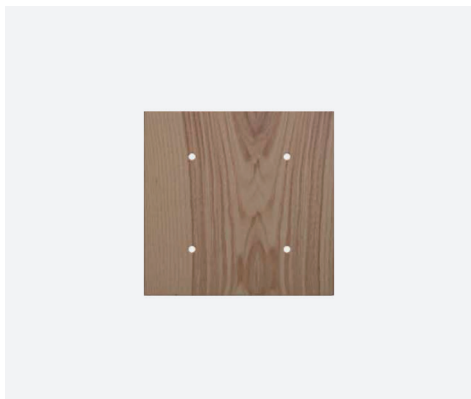
This new series of touch screens for surface mounting with exquisite design. They have a multi-touch display that is available in 10, 16 and 22 inches. There are two hardware versions: one for Android and another one for the Windows operating system. Available in black and white.



Aluna

Table-top touch display with the same features as the Iluna series, previously mentioned. Available in black and white.

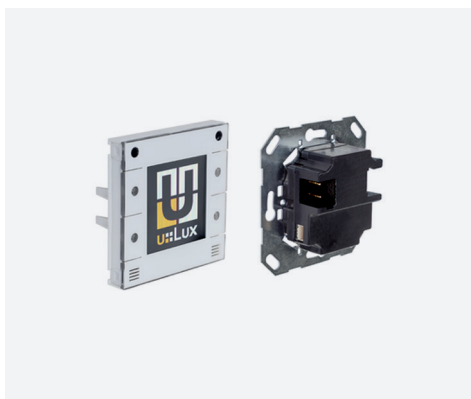
TENSE



Intensity Wood

Tense keeps on extending their push buttons range with new finishings. Now available in natural wood with different colours and textures. Additionally, other wood types are available on demand.

U::LUX



U::Lux Push Button

KNX Push button with colour, graphic, high-resolution display. Its 4 rockers are completely configurable via the ETS. Moreover, it has RGB status LED, proximity sensor, loudspeaker, IR sender and receiver and brightness sensor. It is compatible with any standard 55x55 frame.

VIVEROO



Free

Frame for iPad mini4, iPad Air 2 and iPad Pro that can be mounted both horizontally and vertically. Blocking system and optional ambient light. Available in silver aluminium and aluminium steel.

WEINZIERL



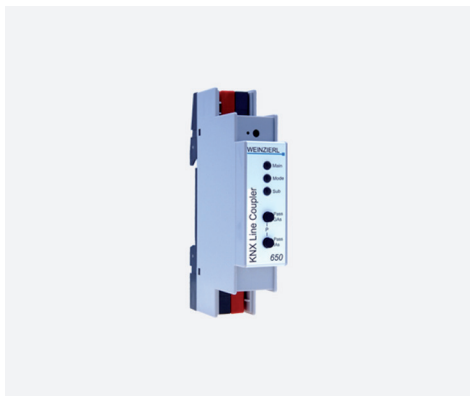
KNX IO Series

Weinzierl has extended their product catalogue with a new actuator range. Manual control and small size (only 1 DIN rail unit). The range includes: 2 inputs, 1 shutter channel, 2 inputs and 2 on/off channels, 2 on/off channels, 4 inputs at 12...230V AC/DC and 4 potential-free inputs.



KNX PowerSupply USB 367

640 mA KNX Power Supply with auxiliary unfiltered output 29V DC. Other functions: diagnostic, logic and USB programmer. Small size (only 4 DIN rail units).



KNX 650 Line/Area Coupler

Smallest KNX Line/Area Coupler (only 1 DIN rail unit) in the market.

YÖNNET



ITR5XX Series

Complete range of actuators with multi-function output 16A to control lights, shutter/blinds and 2 or 4 pipes fan coils. Available in 4, 6, 12, 20 and 35 channels with a totally versatile configuration from the ETS. Manual control and independent phase.



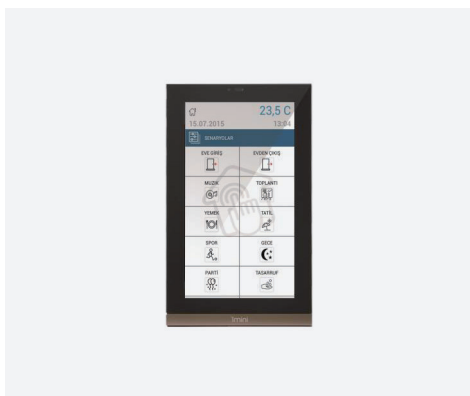
ITR1 Series

Complete series of push button interfaces with a very attractive price. The range includes 3 versions: 2, 4 and 6 channels.



Interra Touch Panel

Touch display with impeccable design available in 10.1" and 7". Wide functionality, including full control of the system, alarm management, caretaker services, visualization of cameras, traffic, weather and news. Thanks to its camera, microphone and two speakers, it can also be used as intercom system. Mobile APP available for iOS and Android to acquire the full configuration of the display via reading of QR codes.



iMini

Interra extends its touch display range with a mini-version of 6,5". Thanks to its very intuitive user interface, it is possible to control lights, shutter/blinds, HVAC and scenes. Thanks to its camera, microphone and speaker, it can also be used as intercom system.

ZÜBLIN



KNX/KLR RA 16m EB

KNX Presence Detector with round shade designed for mounting in false ceilings of industrial plants, offices or meeting rooms. Thanks to its clamp, mounting is very easy. 2 channels for lights with constant lighting regulation, 1 channel for HVAC, brightness measurement, etc.

ZF FRIEDRICHSHAFEN AG



Push Button KNX RF CHERRY

Radio frequency KNX Push Button that does not need any power supply whatsoever (similar to the EnOcean technology). Ideal for those places where it is not possible to supply power or take the KNX bus. Configurable via ETS5.



FUTURASMUS KNX GROUP, YOUR SPECIALIZED WHOLESALER



Futurasmus KNX GROUP

C/ de la Nit. 1, Bloque 7, Local 1

03110 Mutxamel (Alicante)

T: 0034 965959511

F: 0034 965959172

E-mail: info@futurasmus-knxgroup.es

Web: www.futurasmus-knxgroup.es