

KNX Technical Reference Manual

Power-Tool update July 2012

This instruction leaflet contains an overview of the changes to Power-Tool and the products contained in Power-Tool.

1 Power-Tool


1.1 Changes

- After importing the application into the ETS4, all Power-Tool devices have default settings which can be linked with group addresses via the communication objects in the ETS.
- Opening / closing of the entire parameter tree is possible via menu item in the function bar of the PowerTool.
- Use of the function "Take over parameter" under the ETS.
- Display of the description of the communication objects directly in the ETS after closing the PowerTool.

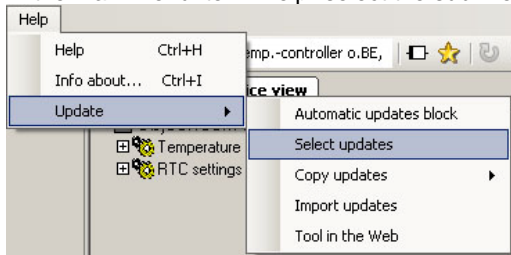
1.2 Online update

- A PowerTool from version 1.2.38 must be installed on the computer.
- For this the computer must be connected to the Internet.

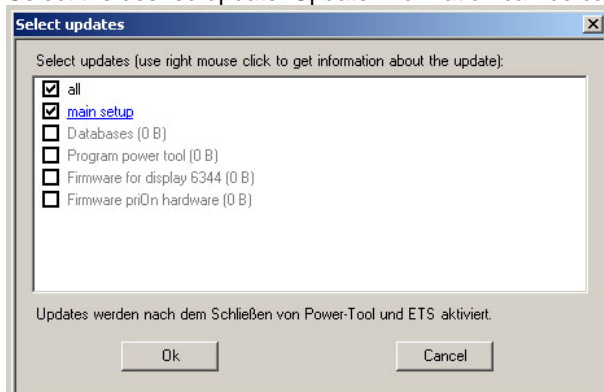
To equip the PowerTool with the latest online version proceed as follows:

- New updates are displayed in the bottom info line. 

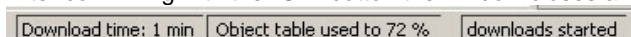
- In the main menu item "Help" select the sub-menu "Update/ select Update".



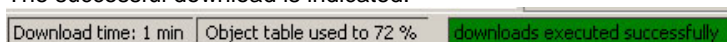
- Select the desired update. Update information can be called up with the right mouse button.



- After confirming with the "OK" button the window closes and the download starts.



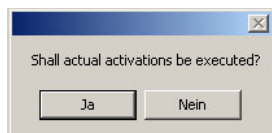
- The successful download is indicated.



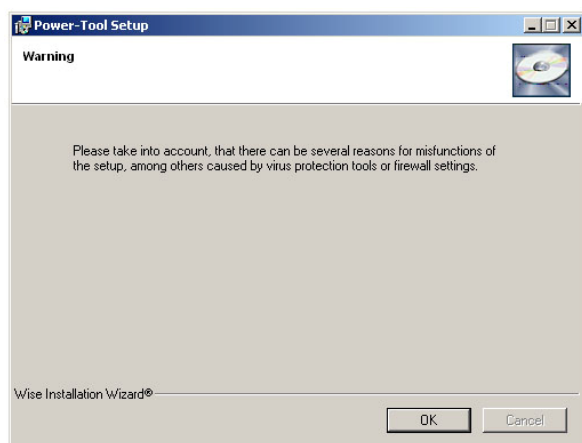
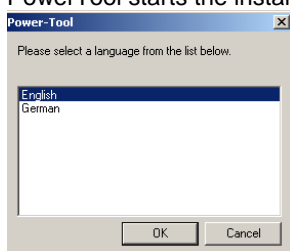
- Close the PowerTool and confirm the display window.

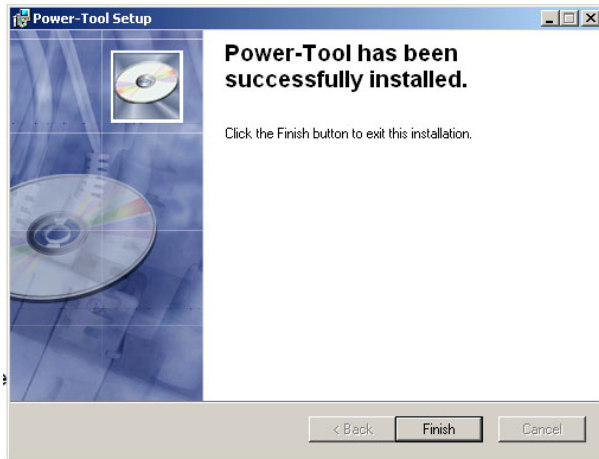
KNX Technical Reference Manual

Power-Tool update July 2012



- Then close the ETS.
- PowerTool starts the installation of the new version (this can take a few minutes).





- Start the ETS
- Start PowerTool via the the application that is to be parameterised.

2 Devices

2.1 MDRC universal dimming actuator version 101

The devices and applications of the 101 version are **not** compatible with its predecessors. The 101 version is different from its predecessor version in the following points.

- Bundling of channels to improve performance is done exclusively via the programming tool.
- Extension of parameter "Behaviour during return of voltage" by parameter setting "No change" Memory function).
- Stored light scenes via KNX bus are retained also after a power failure.
- Commissioning of other KNX devices / participants with the aid of the commissioning interface/adapter (6149/21) via the 10-pole interface on the front of the device.
- Individual applications for every dimming actuator.
- Automatic bundling of channels during initial commissioning is eliminated.
- Manual bundling of channels via the local control directly on the device is eliminated.
- The function "Reset to default settings" is eliminated.

2.2 Busch-priOn end strip on the top with information display (6351-825-101)

A new firmware for updating devices with firmware status <Rev882 is available for the cover strip. The update is carried out with the commissioning interface/adapter (6149/21) via the support frame of the Busch-priOn (see information sheet on the firmware update).

- Display / indication of the month of December in the date indication of the info display.
- Adjustment of the reset behaviour of the internal room temperature controller.

2.3 Busch-priOn 8.89 TFT display rotary control element (6344-xxx-101)

To implement the extension of the function the firmware of the display is to be updated via the micro SD card slot to version 0.1.8 (see information sheet on the firmware update).

- Room temperature controller auxiliary post as list application for activating the room temperature controller object range 6108/03 or room temperature controller 6124/01-xxx or 6128/01-xxx.
- Temperature setpoint adjustment via a basic set value object.

2.4 ABB Powernet KNX serial/blind actuator, flush-mounted (6920/40)

Extension of the application of the flush-mounted actuator for connecting the Busch-Watchdog 180 flush-mounted Standard sensor (6122/01-xxx) or the Busch-Watchdog 180 flush-mounted Comfort II sensor (6122/02-xxx)

KNX Technical Reference Manual

Power-Tool update July 2012

2.5 Commissioning interface/adapter (6149/21)

The device has been extended by the following functions. For this a firmware update Vxx.xx is to be carried out on the bus couplers (see information sheet on the firmware update).

- For local commissioning via the ETS 4 with ETS3 the current Falcon driver must have been installed.
- For KNX-bus commissioning via the ETS (the current Falcon driver must have been installed.
- Local and KNX-bus commissioning via the ETS 4 of ABB Powernet KNX components
- Diagnosis via ETS group monitor

2.6 Room temperature controller 6124/01-xxx and 6128/01-xxx

With Firmware 1.1 of the device, for the set value setting the user has available only one set value for the current operating mode (heating/cooling).