

FEATURES

- Frames for Zennio ZS70 series of switches and sockets.
- Decorative frames with 1 and 3-gang (reference ZS70FMyx, where y = number of gangs, x = colour).
- Double, triple and quadruple frames require a center-to-center distance of 71 mm.
- Available colours:
 - Anthracite (x = A)
 - Silver (x = S)
 - Matt White (x = MW)
- Low profile: it protrudes 9.5 mm from the wall.
- Material: PC+ABS FR V0 halogen free.

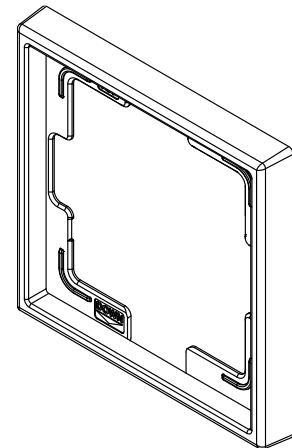
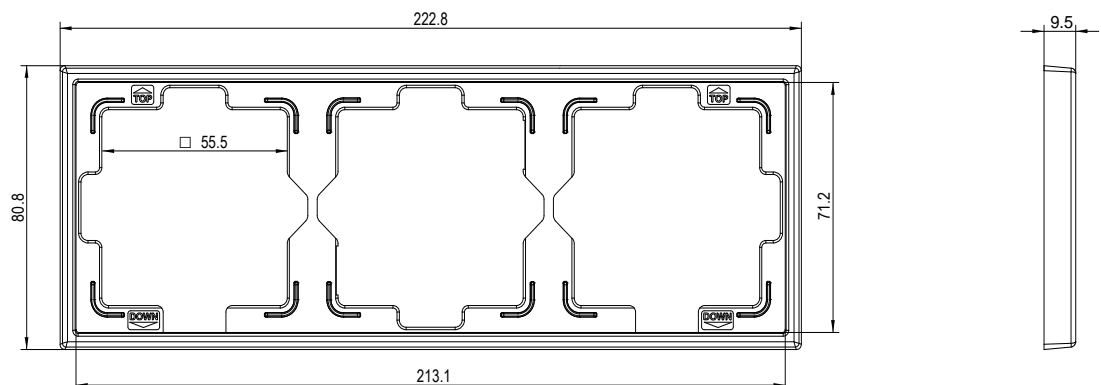
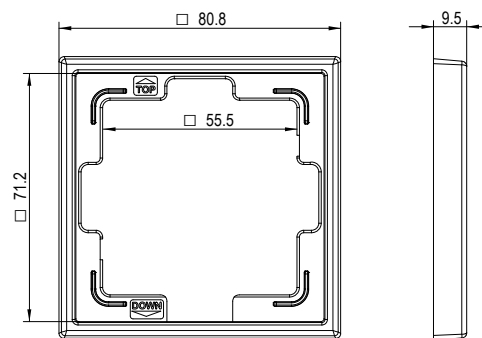


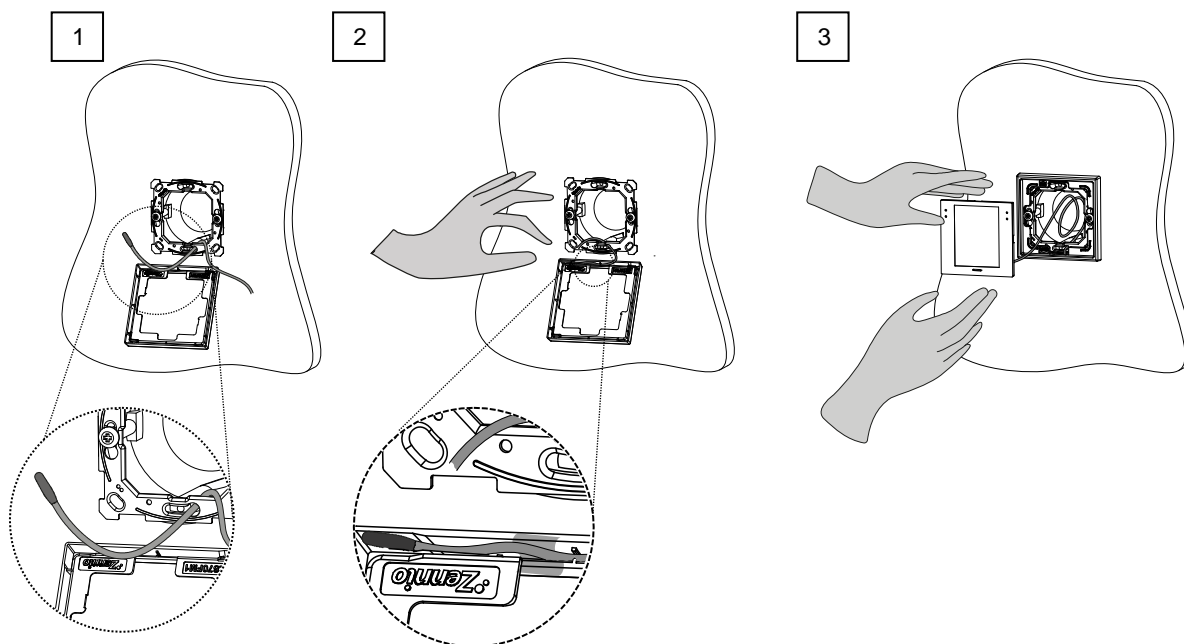
Figure 1. One-gang frame

DIMENSIONS (mm)



TEMPERATURE PROBE INSTALLATION INSTRUCTIONS

1. Guide the temperature probe cable through an available hole in the metal plate from the inside to the outside.
2. Insert the temperature probe in the lower frame corner housing and fix it with tape.
3. Place the frame on the metal plate, insert the excess cable into the back box, connect the terminal block to the device and install it in the frame.



SAFETY INSTRUCTIONS

- Installation should only be performed by qualified professionals according to the laws and regulations applicable in each country.