

Product: **IP Router**

Type: **IPR/S3.1.1**

Current application program: **IP Router/2.0**
IP Router/1.1

Software-Information to: **IP Router/2.0**
IP Router/1.1

from: Market introduction (November 2015)

Application programs:

Different application programs are available with the IPR/S3.1.1 for ETS 3 and ETS 4/5. Some of the functions for the ETS 4/5 are not available in the applications for the ETS 3.

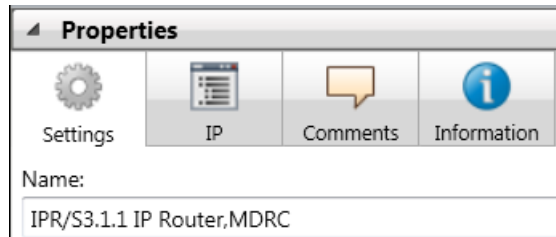
Device	IPR/S 2.1	IPR/S 3.1.1	IPR/S 3.1.1
Application	IP Router/1.0	IP Router/1.1	IP Router/2.0
ETS	ETS 3/ETS 4	ETS 3	ETS 4/ETS 5
Properties of IP Router			
Number of tunneling servers	1	1	5
Number of unicast connections	3	10	10
Monitoring for bus voltage failure (see chapter Monitoring for bus voltage failure , p. 6)	-	■	■
Filter Group telegrams main group 0...13	■	■	■
Filter Group telegrams main group 14...31	-	-	■ (ETS 4.1.7 or higher)
IP discovery (i-bus® Tool)	■	■	■
Firmware update (i-bus® Tool)	-	■	■
Unicast parameterization (i-bus® Tool)	-	■	■
Power over Ethernet	-	■	■

■ = property applies

- = property does not apply

Important notices:

- For the application version IP Router/2.0 the device name is loaded into the device using the properties window in the ETS (change in ETS functionality).
→ In ETS4 there is a bug regarding that function. The device name is not loaded into the device until at least one character of the default device name is changed.
In ETS5 this function works properly.



- The function „Blink LED“ that can be used during commissioning with the i-bus Tool is not possible until the application program has been downloaded into the device.