




Using the Telephone Gateway, it is possible to send configurable voice messages via the telephone network. In addition to the voice messages, text messages can also be sent as emails or SMS messages.

If the device is called, it is possible to navigate through a menu using dial tones (DTMF), in which states can be queried and commands can be executed.

The device has an integrated web server which enables simple operation and parameterisation via the LAN with a conventional browser.

The device can be supplied with 230 V AC and/or 12 V DC.

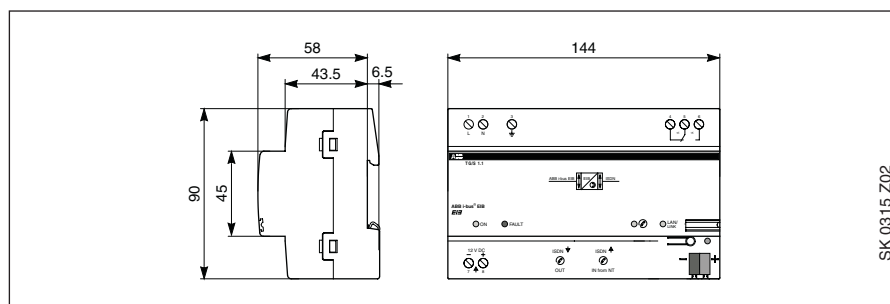
Technical Data

Operating voltage:	– Mains voltage	90...265 V AC, 50/60 Hz
	– Auxiliary voltage	10...30 V DC
	– Power consumption	max. 2.8 W at 230 V AC max. 2.0 W at 12 V DC
	– Current consumption	max. 9 mA at 230 V AC max. 170 mA at 12 V DC
	– Power loss (of power supply unit)	max. 1.15 W at 230 V AC (at efficiency level 60 %)
	– Signalling contacts	max. 0.35 W at 12 V DC (at efficiency level 82 %) 6 A / 250 V AC
Connections:	– EIB / KNX	Bus connection terminal, 0.6 to 0.8 mm Ø, single-core
	– Mains voltage, auxiliary voltage, signalling contact	Screw terminal 0.2...2.5 mm ² finely stranded 0.2...4 mm ² single-core
	– Tightening torque	max. 0.6 Nm
	– Telephone connection	
	– Terminals	0.2...2.5 mm ² finely stranded 0.2...4 mm ² single-core
	– Tightening torque	max. 0.6 Nm
Operating and display elements:	– plug-in	RJ 11 socket
	– LAN connection	RJ 45 socket
	– ON LED, green	Displays that device is ready for operation
	– FAULT LED, red	Displays an internal device fault
	–  LED, yellow	Displays that the device is dialling (flashes) / occupied telephone line
	– LAN/LINK LED, yellow	Displays the connection to a network (link) and telegram traffic (flashes)
Type of protection:	– LED above bus connection, red with push button	For assigning the physical address
	– IP 20	In accordance with DIN EN 60529
Protection class:	– II	In accordance with DIN EN 61140
Insulation category:	– Overvoltage category	III in accordance with DIN EN 60664-1
	– Pollution degree	2 in accordance with DIN EN 60664-1
EIB / KNX safety extra-low voltage:	– SELV 24 V DC	

Temperature range:	– Operation	– 0 °C+ 45 °C
	– Storage	– 5 °C+ 55 °C
	– Transport	– 5 °C+ 70 °C
Design:	– Modular DIN rail mounted component (MDRC)	Modular installation device, pro M
	– Dimensions	90 x 144 x 64 mm (H x W x D)
	– Mounting width	8 modules at 18 mm
	– Mounting depth	68 mm
Installation:	– on 35 mm mounting rail	In accordance with DIN EN 60 715
Mounting position:	– As required	
Weight:	– 0.4 kg	
Housing, colour:	– Plastic, grey	
Certification:	– EIB / KNX in accordance with EN 50 090-1, -2 Certificate	
CE norm:	– in accordance with the EMC and low voltage guidelines	

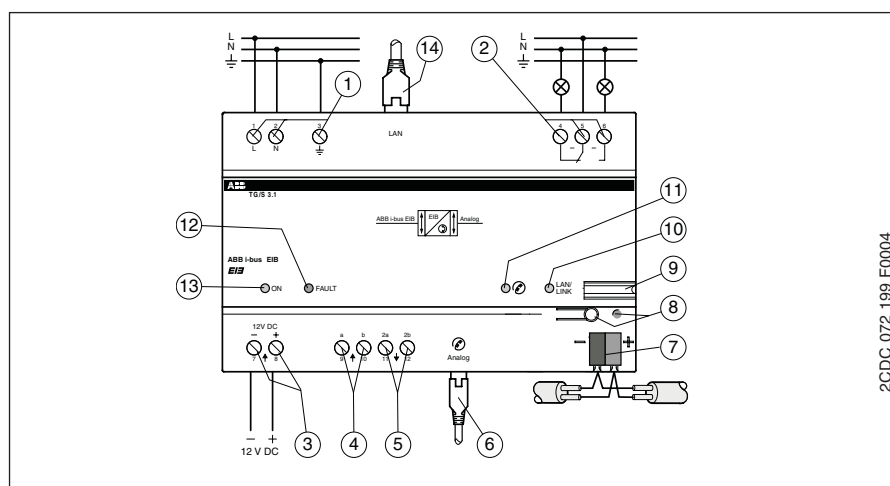
Application programs	Number of communication objects	Max. number of group addresses	Max. number of associations
Notification Remote control/1	Up to 60	254	254

Dimension drawing



SK 0315 Z02

Device connection



2CDC 072 199 F0004

- | | |
|--|---|
| 1 230 V AC connection | 7 EIB bus connection |
| 2 Signalling contacts (6 A, 250 V AC) | 8 Programming LED with programming button |
| 3 12 ...30 V DC connection | 9 Nameplate |
| 4 Terminal for telephone connection (exchange) | 10 LAN/LINK LED |
| 5 Terminal for outgoing telephone connection | 11 LED for telephone connection |
| 6 RJ 11 socket for telephone connection (exchange) | 12 LED for fault indication |
| | 13 ON LED |
| | 14 LAN/Ethernet connection |