

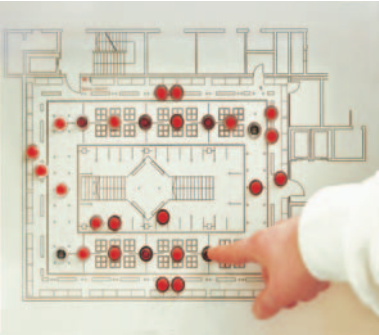
ABB i-bus® EIB / KNX Fault Monitoring Unit SMB/S 1.1

Intelligent Installation Systems



Faults are announced

Fault Monitoring Unit of ABB STOTZ-KONTAKT



The Fault Monitoring Unit SMB/S 1.1 can process up to 100 fault signals. The fault signals can be combined to a single fault message group or distributed to multiple fault signal groups that are independent of each other.

The Fault Monitoring Unit SMB/S 1.1 can detect any assignable 1-Bit information (fault signals) and uses this information to generate the control signals for optical and acoustic signals. Thus for example, the optical displays and acoustic signals of fault signal tableau can be actuated via switch actuators. For acknowledgement, i.e. to reset the optical and acoustic signal transmitters, it is possible for example, to use an acknowledge button via a binary input to send the information to the Fault Monitoring Unit SMB/S 1.1.

The Fault Monitoring Unit to DIN

Different monitored information

The Fault Monitoring Unit SMB/S 1.1 supports the following DIN 19235 specified monitored information:

- 1. Fault signal with permanent light
- 2. New value signal with simple flashing light
- 3. Initial value signal with simple acknowledgement
- 4. Motor signal

Ordering details

Selection table



Short description	Designation	MW*	Order No.	bbn 40 16779 EAN	Weight 1 pc. in kg
SMB/S 1.1	Fault Monitoring Unit, MDRC	2	GHQ 631 0085 R0111	58092 2	0.1

* MW = Module Width in divisions = 18 mm



The data given in this publication are subject to technical modification.

Pub No. 2CDC 513 026 D0201

Your EIB-Partner