

VIA WALKWAY LIGHT 24V

Installation Manual

basalte

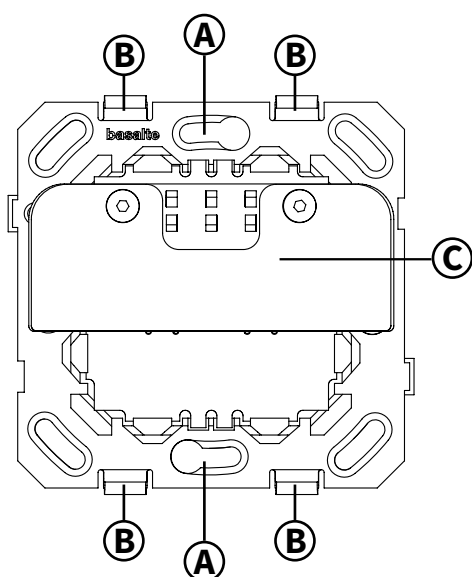
Safety instructions

Before installing the unit, read this manual thoroughly and retain it for future reference.
The device should be installed in compliance with official regulations valid in country of use.
The device may only be installed and connected by qualified electricians.
Ensure that electricity is switched off when installing or unmounting the device.
Do not open, dismantle, alter or modify the device.

Components

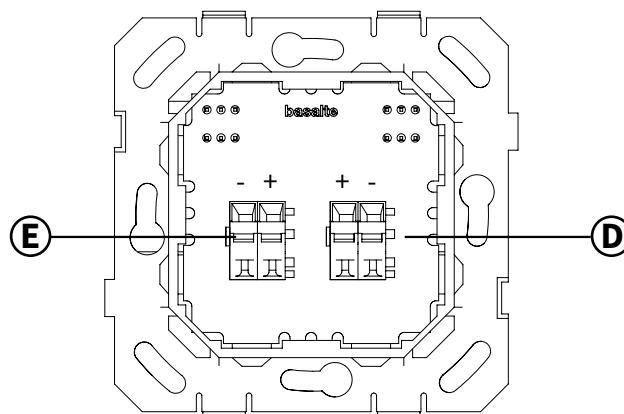
modelnr: 0480-01

Via walkway light front



- A Opening to fix the outlet to the wall box
- B Clips to mount the cover plate
- C LED-strip

Via walkway light back



- D 24V connections, used to daisy change different 24V devices
- E Use a flathead screwdriver to open the wire terminals

Wall boxes

The Via should be installed in European wall boxes with screws. The distance between the screws needs to be 60 mm, and a minimal depth of 45 mm is required.

Square wall boxes size 60 x 60 mm are compatible with the Via.

The following round wall boxes are compatible with the Basalte Via:

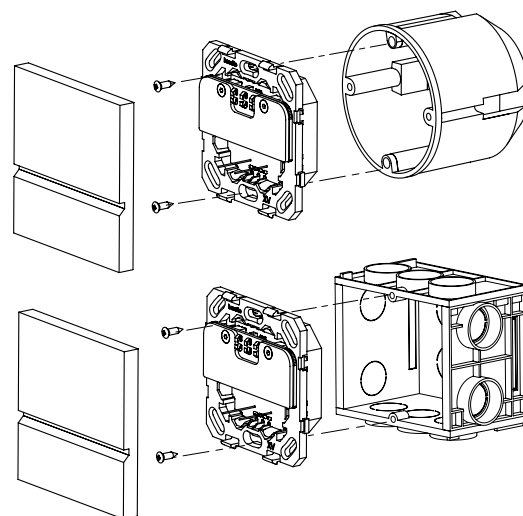
- Helia round with cut hole 68 mm (type 247, 261).
- Kaiser round with cut hole 68 mm (type 9063-xx, 9064-xx, 9062-xx).
- Legrand batibox round (ref 080051, 080061, 080052, 080053).
- ABB round Hafobox MD4050 and hollow wall boxes HW-50, HW50-G, HW52-F (except HW52-F IGD and HW52-F BW).



When using other round boxes, please verify the compatibility upfront.

Do not use following wall boxes:

- Helia O-range
- Kaiser (1055-xx – 1056-xx)
- ABB 3040
- ABB HW52-F IGD and HW52-F BW



Via cover

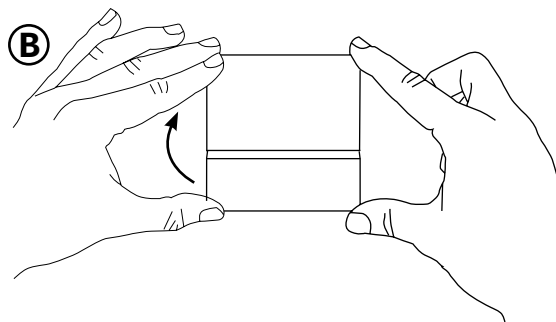
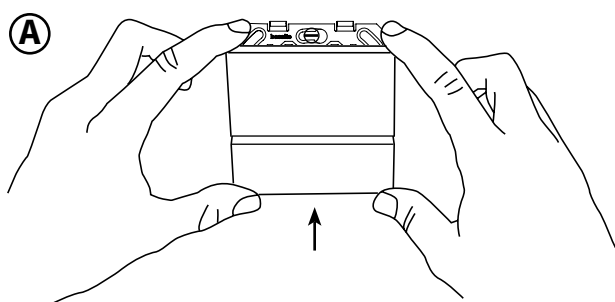
0481-xx (not included)

Installation instructions

1. Install square wall box (60 mm) or compatible round wall box.
Wall box should have screws with a vertical distance of 60 mm and minimal depth of 35 mm.
2. Connect the 24V power lines using the screwless terminals.
3. Fix the via to the wall box with 2 screws using the holes on vertical axis.
4. Mount the cover frame using the clips. Make sure to align the LED with the frame in the correct position.

A Place the frame over the lower clips

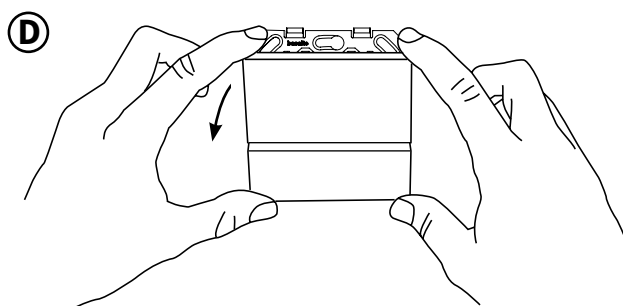
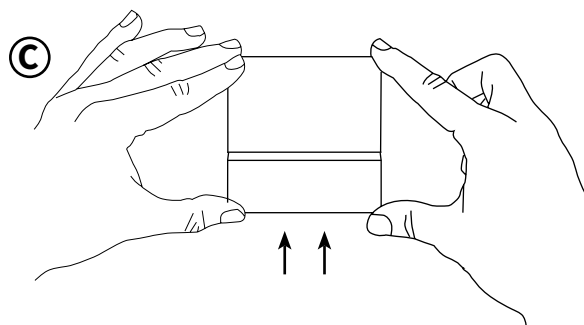
B Push the frame upwards, tilt towards the wall and attach the frame over the top clips



How to remove the Via front cover (see drawing below)

C Push the frame upwards

D Tilt the frame away from the wall



Technical data

Rated constant voltage : 10 - 30 V DC

Dimmable with PWM constant voltage dimmer

Power consumption: 1W

Ambient temperature:

Operation: -5°C to 45°C

Storage: -15°C to 55°C

Transport: -15°C to 55°C

Protection class: II

Type of protection: IP 20

LED color temperature: 4500 K