

FIBONACCI CRESNET

Installation Manual

basalte

0272-03-xx



0274-03-xx

Before operating the unit, please read this manual thoroughly and retain it for future reference.

You are cautioned that any changes or modifications not expressly approved in this manual could void your authority to operate this equipment.

Description

Fibonacci Cresnet is a touch-sensitive keypad with a unibody design which combines electronics and cover in one single article.

The separate touch-sensitive surfaces of Fibonacci each control various functions, using both short and long press.

By touching more than one surface at the same time (multitouch), additional comfort functions can be activated including room toggle, scene sequencer and RGB sequencer. The multicolour LED backlight provides status feedback and can be used as night light.

Fibonacci also has a built-in temperature sensor.

Model No.

0272-03-XX Fibonacci dual Cresnet

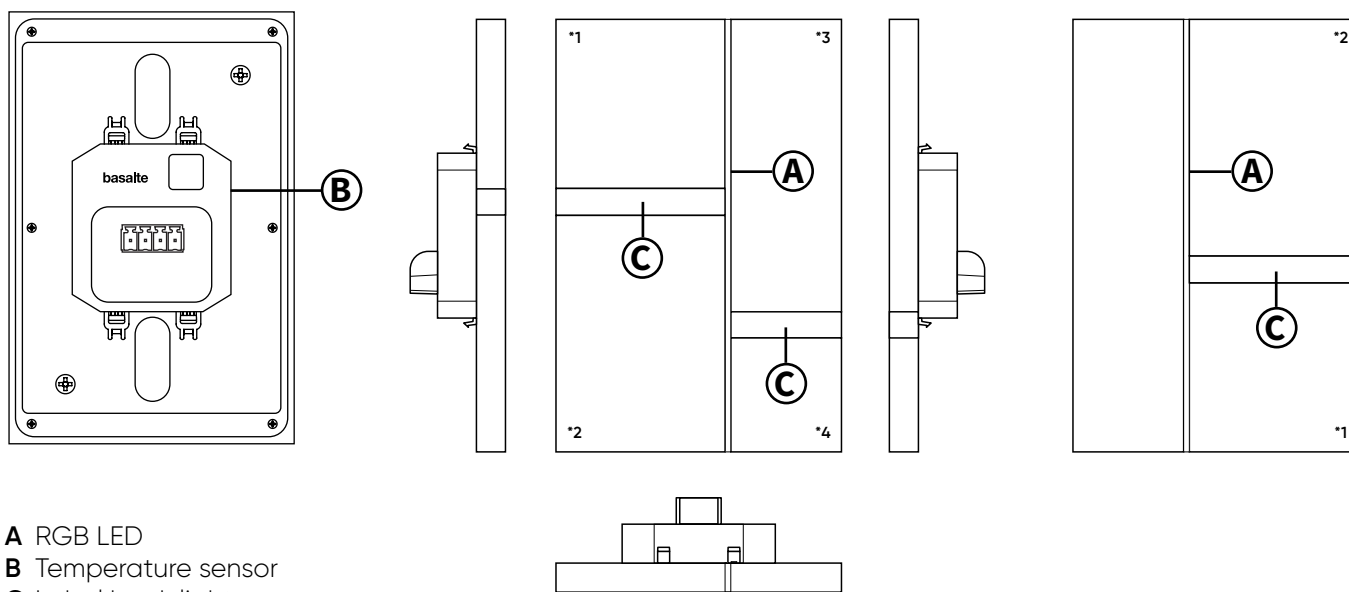
0274-03-XX Fibonacci quad Cresnet

Compatible Fibonacci accessories

0272-00 Fibonacci custom dual label set

0274-00 Fibonacci custom quad label set

(*) contact your sales representative to order custom label sets



* Please review the above drawing to understand how Fibonacci keypad buttons are numbered in Crestron programming.



Fibonacci is designed to be wall mounted in portrait orientation. Fibonacci Cresnet requires a minimum in-wall mounting depth of 26mm plus room for cable(s).

Installation

1. Rough-In

Use a standard 1-gang US wall box or a standard European back box.
The included mounting bracket should be mounted on the wall using the included screws.



Only use the openings on the vertical axis as shown on the picture.

2. Installing Fibonacci on the wall

Position Fibonacci for portrait mounting, align the mounting bracket hooks with the Fibonacci mounting slots and gently press it towards the mounting bracket/wall. Fibonacci snaps in when pushed to its mounting bracket.

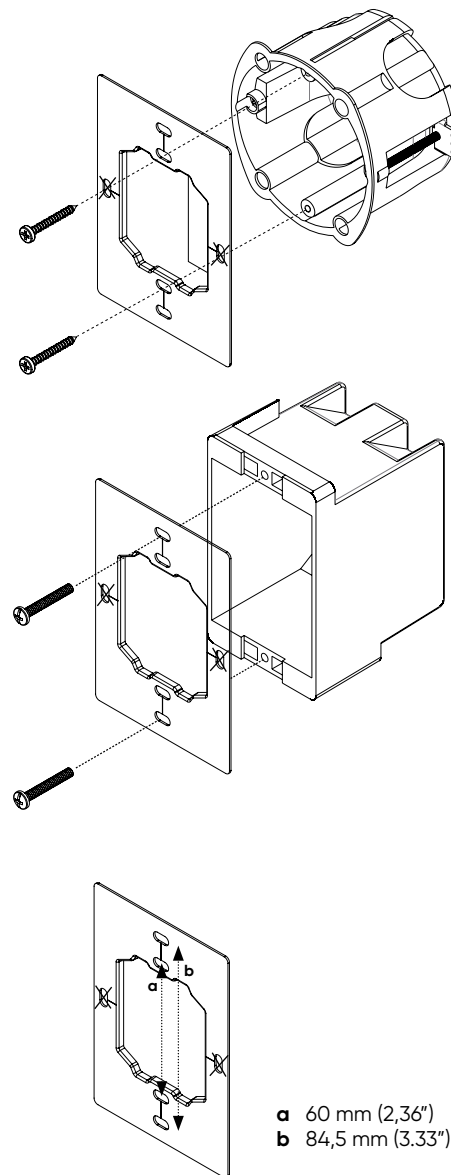
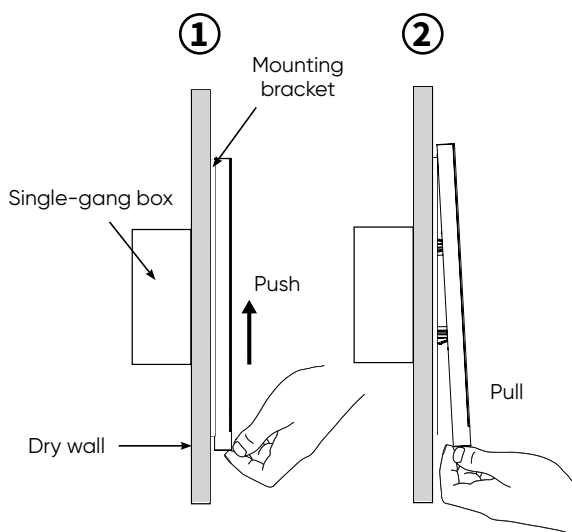
Powering up Fibonacci

Connect the keypad to the Cresnet bus according to the Crestron installation guidelines.

Please refer to the software manual to configure Fibonacci.

Removing Fibonacci

Follow the step 1 and 2 in order to remove Fibonacci from the wall.



Technical data

Current consumption Cresnet: Peak during startup: 1 W
During operation: 0,5 W

Ambient temperature: Operations between 5 & 45°C
Storage & Transport between 15 & 55°C

Max. humidity: 93% relative humidity - no moisture condensation

Protection Class: II

Type of protection: IP20

Certification: CE