

Safety instructions

Before operating the unit, please read this manual thoroughly and retain it for future reference. Failure to observe these instructions might damage the device. The device may only be installed and connected by professional electrical contractors. All relevant rules and regulations valid in the country of use apply.

Description

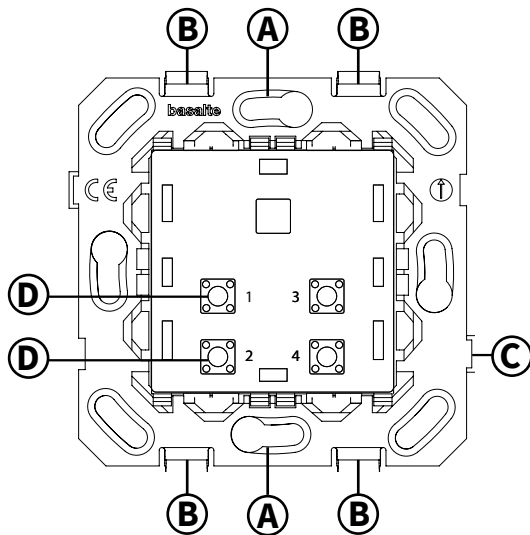
Chopin dry contact closure (= DCC) is a mechanical switch compatible with all Chopin cover plates without LED levers both 1- and 2-gang.

The Chopin's levers control a Normal Open contact closing.

Components

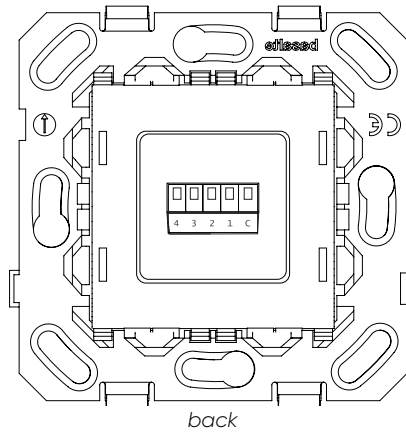
Chopin DCC

Model No. 0220-04



Compatible Chopin covers

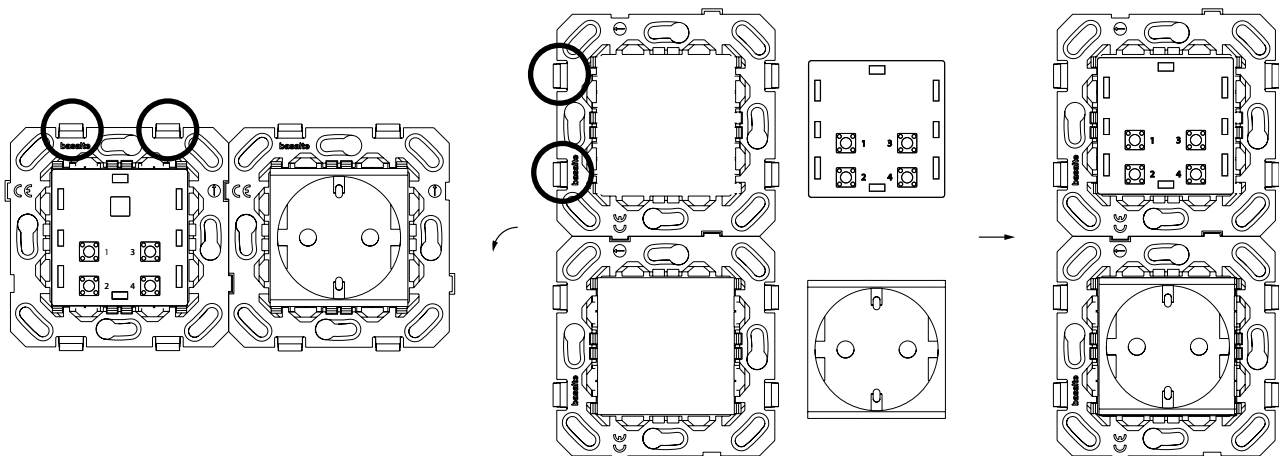
Visit chopin.basalte.world to configure your Chopin cover.



- A Opening to screw the Chopin switch to the wall box
- B Clips to mount the cover plate
- C Alignment guides for 2-gang installations
- D Lever button

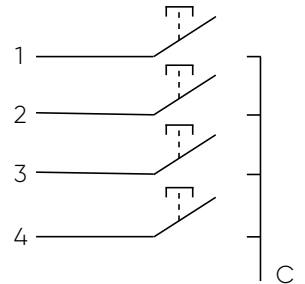


When using vertical oriented Chopin covers, the clips to mount the cover plate need to be oriented vertically. Make sure to click out electronics from the socket adapter and turn the electronics 90° counter-clockwise.



Installation and commissioning

- Use a standard European back box with screws. The distance between the screws needs to be 60mm. The required depth is 30mm, although additional depth should be reserved for connecting the device. For 2-gang Chopin, use a 2-gang European back box with a centre-to-centre distance of 71mm. To verify your compatible back box, please refer **to the back box application note on basalte.world**.
- Mount the Chopin with button 1 and 3 upwards. Use screws with a countersunk, flat head.
- By pressing the levers you close the contact of the relay. This low voltage contact can be used in combination with a binary input module or a mechanical impulse relay.
- Connect the connector as shown in the image on the right.
 - > Dual levers: 1 = lever left up / 2 = lever left down / 3 = lever right up / 4 = lever right down
 - > Single lever: 1 = lever up / 4 = lever down



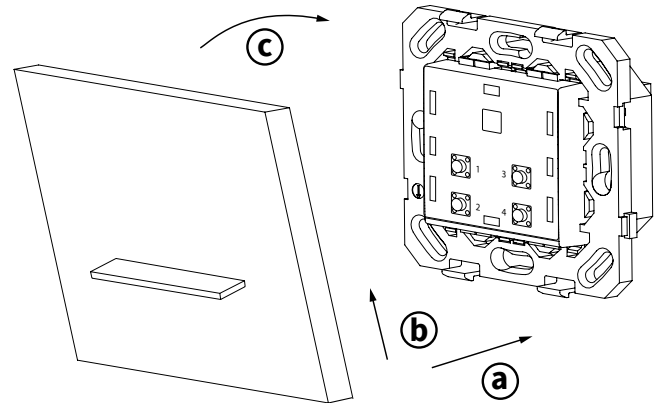
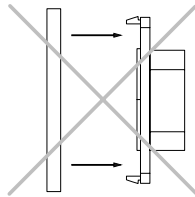
⚠ Do not apply too much force screwing Chopin electronics to the backbox, otherwise you risk the levers to not function properly.

How to mount the Chopin front cover (not included)

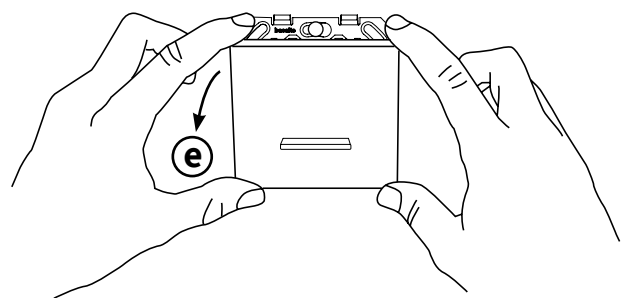
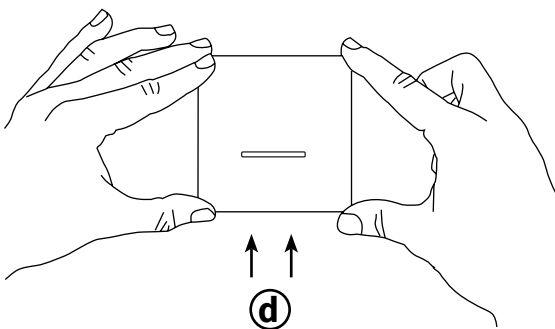
- Place the Chopin front cover over the lower clips
- Push the Chopin front cover upwards and tilt towards the wall
- Attach the Chopin front cover over the top clips



Pushing the cover straight into the clips without pushing upwards and lifting might damage the Chopin electronics.



How to remove the Chopin cover (not included)



- Push the cover upwards
- Tilt the cover away from the wall

Technical data

Contact rating max.: 50mA @ 24 VDC

Ambient temperature:

Operation: -5°C to 45°C

Storage: -15°C to 55°C

Transport: -15°C to 55°C

Max. humidity: 93% relative humidity,
no moisture condensation

Protection class: II

Type of protection: IP 20

Certification: CE