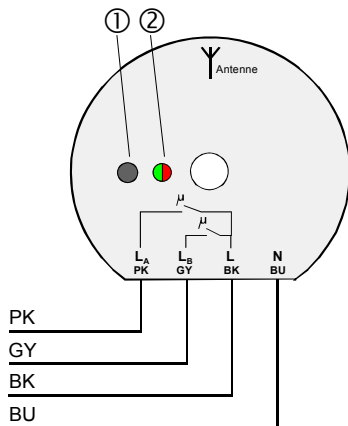


**Two-channel radio-control switching actuator 'Mini'** Order No.: 0424 00

A)

**Function**

The radio-control switching actuator permits independent switching of two electrical loads by radio control.

After receiving a telegram from a programmed radio detector, the switching actuator is switched on for about 1 minute.

The switching actuator can be programmed to store up to 7 radio-control transmitters per channel.

The device is equipped on the front with a programming key ① and a bicoloured programming LED ②.

**Lightscares**

The switching actuator can be included in up to five light-scapes which are activated with the corresponding radio-control transmitters (e.g. hand-held transmitter 'Komfort') and stored. The desired lightscape key must be programmed beforehand into the switching actuator.

**All-ON / All-OFF**

The programming of a radio channel (e.g. hand-held transmitter 'Komfort') always includes the automatic storage of the functions of the All-ON or All-OFF key. The All-ON or All-OFF key of a radio-control transmitter switches the load connected to the switching actuator on or off.

**Light control**

In combination with a programmed radio-control presence detector or light sensor, the switching actuator can be used for two-state lighting control functions (load either on or off). For more information, refer to the operating instructions of the radio presence detector or light sensor.

**Safety instructions**

**Attention:** Electrical equipment must be installed and fitted by qualified electricians only.



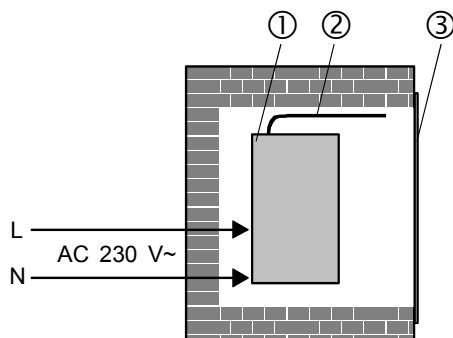
Since the device has only basic insulation, the applicable standards provide that also such activities as programming and clearing or testing of the device may be performed by qualified electricians only. This applies only insofar as parts of the electrical system have to be opened for such activities.

Since the load lines of the device will be live for a short time when the mains voltage is applied, it is necessary to insulate all unused conductors.

**Important:**

Especially in those cases where socket outlets are to be switched with a radio-control actuator, the socket circuit itself must be protected with a 10 A circuit-breaker and the socket accordingly marked.

B)

**Fitting**

Install the radio-control actuator (fig. B ①) in a flush-mounting box behind a blind cover (fig. B ③).

When used outside the flush-mounting box make sure the device is sufficiently protected against accidental contact, for instance, by installing it in a surface-mounted splitting box or in the ceiling-rose of a lamp. When installing the device the inscription side must be in front.

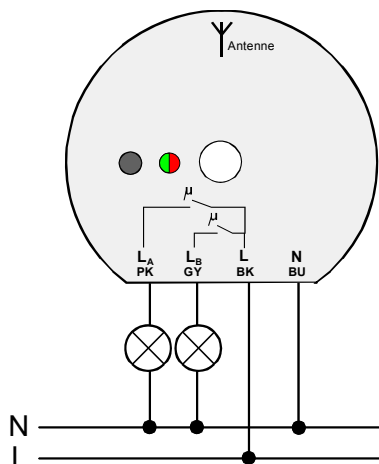
**Antenna**

To increase the transmitting range, the antenna wire (fig. B ②) must always be unrolled and extended freely. Since the antenna has only basic insulation, it must not be laid outside the flush-mounting or surface-mounting box.

Keep a distance to large metal parts (e.g. metallic door-frames).

Do not shorten or lengthen the antenna and do not strip off the insulation.

C)

**Connection**

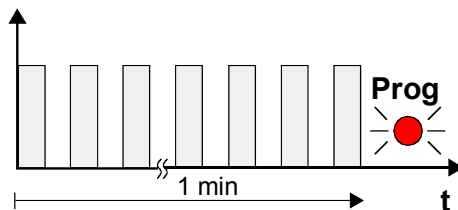
Connect the radio-control actuator in acc. with fig. C.

BU, blue wire:	N, neutral conductor
BK, black wire:	L, AC 230 V~
PK, pink wire:	L <sub>A</sub> , channel A
GY, grey wire:	L <sub>B</sub> , channel B

**Important**

- The distance from electrical appliances (e.g. microwave oven, hi-fi and TV sets) must be at least 0.5 m.
- To prevent saturation of the radio receiver (actuator), the radio-control actuator must be at least 1 m away from the nearest transmitter.
- The radio-control actuator must not be used as an actuator for the control of blinds and shutters. Using the actuator for shutter control may cause irreparable damage to the shutter motor.

D)



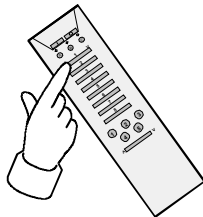
## Programming of a radio transmitter

During programming of a transmitter, the sensitivity of a radio-control receiver is reduced to a range of approx. 5 m. The distance between the radio-control actuator and the transmitter to be programmed into the actuator should be between 0.5 m and 5 m.

### Procedure

1. Depress the programming key for about 4 seconds. The radio-control actuator switches off the loads connected. The LED flashes red and the device is now in the programming mode for channel A. To switch over to the programming mode for channel B, depress the programming key once again for about 4 seconds. The LED flashes green. The programming mode remains activated for about 1 min (fig. D).

E)



2. Send a radio telegram from the selected transmitter (fig. E); see "Radio-control transmitter" operating instructions:

### Programming a channel

Depress the channel key for more than 1 second.

### Programming a lightscape key

Depress the lightscape key for more than 3 seconds.

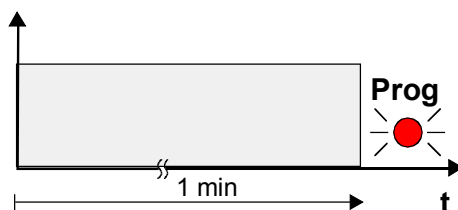
### Programming a detector

Remove the battery for about 2 minutes from the detector. Put the battery back in place and make a movement inside the detection range of the detector within the next 15 minutes.

### Programming a presence detector or a light sensor

Remove the battery(ies) for about 2 minutes from the transmitter. After putting the battery back in place, the device starts transmitting programming telegrams for about 30 s.

F)

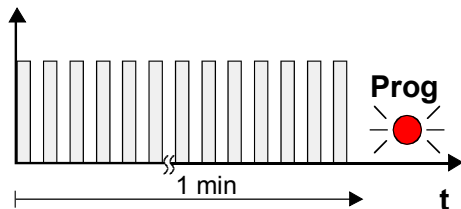


### Important:

It is not possible to program a combination consisting of presence-control detector, light sensor and detector.

3. The radio-control actuator confirms storage of the data transmitted with a permanently lit LED in red for channel A and in green for channel B (fig. F).
4. The programming mode ends automatically after about 1 minute or can be terminated by a short depression of the programming key. The radio-control actuator is then again in the normal operating mode.

G)

**Important:**

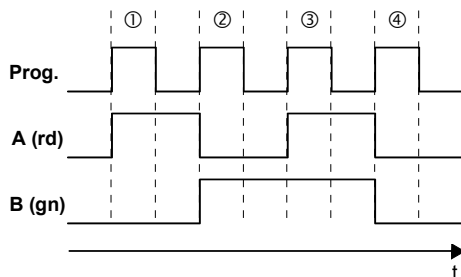
- When all 7 memories are occupied, it is necessary to delete an already stored transmitter before a new one can be programmed.
- The programming of a radio channel (e.g. hand-held transmitter 'Komfort') always includes automatic storage of the functions of the All-ON or All-OFF key.

**Deleting a radio-control transmitter**

A radio-control-transmitter in an actuator channel is deleted when the same transmitter is programmed again into this channel (see 'Programming of a radio transmitter'). All channels and lightscape keys must be deleted one by one for each channel.

Successful deletion is signalled by the LED blinking faster in the colour corresponding to the channel (fig. G).

H)

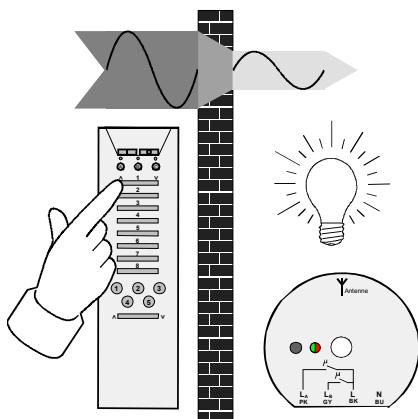
**Test operation**

After the installation the radio-control actuator can be tested by brief, successive depressions (< 1 s) of the programming key.

The functional sequence is shown in the timing diagram (fig. H) and in the table below:

No.	Channel A	Channel B	LED
①	On	Off	red
②	Off	On	green
③	On	On	red/green
④	Off	Off	Off

I)

**Radio transmission**

**Radio transmission takes place on non-exclusive frequencies. Interference can therefore not be excluded. This type of radio transmission is not suitable for safety applications such as emergency shut-off or emergency calling functions.**

The range of a radio transmitter (100 m max. in the free field) depends on local building conditions:

Dry Material	Permeability
Timber, gypsum, gypsum plasterboards	appr. 90 %
Brickwork, particle boards	appr. 70 %
Reinforced concrete	appr. 30 %
Metal, metal grating, aluminium sheeting	appr. 10 %

### Radio operation

- The inter-connection of this radio system with other communication networks must comply with national legislation.
- This radio system must not be used for communication beyond property boundaries.
- If utilized in conformity with its designated use, this unit fulfills the requirements of the R&TTE Directive (1999/5/EC). The complete declaration of conformity can be found in the Internet under: [www.gira.de/konformitaet](http://www.gira.de/konformitaet).

**The radio-control switching actuator may be operated in all countries of the EU and the EFTA.**

### Technical Data

Nominal voltage:	AC 230/240 V~, 50/60 Hz
Switching contact:	relay, 6 A (with resistive loads only)
Circuit-breaker:	10 A

Especially in those cases where socket outlets are to be switched with a radio-control actuator, the socket circuit itself must be protected with a 10 A circuit-breaker and the socket accordingly marked.

#### Switching capacity per channel

incandescent lamps:	350 W
HV halogen lamps:	300 W
LV halogen lamps	
conven. transformer:	350 VA, with min. 85% rated load
Gira TRONIC transformer:	300 W
fluorescent lamps	
non-compensated:	350 VA

#### Energy-saving lamps:

When switched on, energy-saving lamps produce high inrush currents which may weld the switching contacts together. Check therefore whether the lamps are suitable before using them.

Number of possible transmitters:	max. 7 per channel
Receive frequency:	433,42 MHz, ASK

Degree of protection:	IP 20
Dimensions (Ø x H):	52 x 23 mm
Center hole Ø:	7.5 mm
Temperature range:	appr. -20 °C ... +55 °C
Relative humidity:	0 % ... 65 %

---

## Acceptance of guarantee

We accept the guarantee in accordance with the corresponding legal provisions.

**Please return the unit postage paid to our central service department giving a brief description of the fault:**

Gira  
Giersiepen GmbH & Co. KG  
**Service Center**  
Dahlienstrasse 12  
D-42477 Radevormwald



The CE sign is a free trade sign addressed exclusively to the authorities and does not include any warranty of any properties.

Gira  
Giersiepen GmbH & Co. KG  
Postfach 1220  
D-42461 Radevormwald

Telefon: +49 / 21 95 / 602 - 0  
Telefax: +49 / 21 95 / 602 - 339  
Internet: [www.gira.de](http://www.gira.de)