



## General description

The MEKBUS is a 4.3" color resistive touch screen to control and monitor elements in a KNX installation.

It allows controlling the installation by allusive icons upon 4 different planes or images, managing technical alarms, activating real presence simulation and programming weekly timings.

## Capacity

- 4 different pages to locate icons upon 3D drawings, plans, pictures, etc.
- 20 point to point controls with different representative icons (lights, blinds, climate control, watering, etc.)
- 20 scenes execution with a maximum of 64 events each.
- Up to 10 weekly timing programming
- Real presence simulation
- Programmable from a specific application trough microSD card (2GB max. FAT16 format)
- Possibility of managing an independent climate area, in conjunction with STIBUS-SD Ingenium model

## Technical information

**Supply:** 29Vcc from auxiliary power supply or from KNX BUS

**Consumption** (depends on source):

- Auxiliary Power Supply 18-30Vdc (Recommended)
  - 80mA from auxiliary power supply
  - 1mA from KNX BUS
- KNX BUS (Optional)
  - 80mA from KNX BUS

**Size:** 145x86x10mm

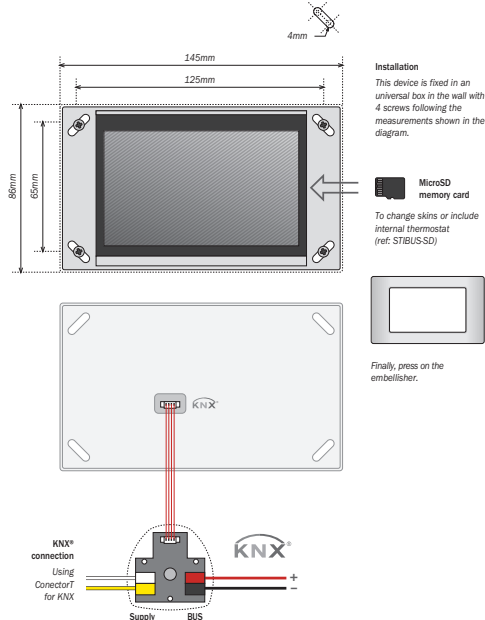
**Mounting:** On universal distribution box, screwed on wall

**Programming:** Via microSD card (2GB max. FAT16 format)

**Environment temperature range:** Operation: from -10°C to 55°C / Storage: from -30°C to 60°C / Transportation: from -30°C to 60°C

**Regulation:** According to the directives of electromagnetic compatibility and low voltage EN 50090-2-2 / UNE-EN 61000-6-3:2007 / UNE-EN 61000-6-1:2007 / UNE-EN 61010-1

## Installation



## QR-Code

