

DDD = 225

Furthermore, see interactive user guides at [www.kamstrup.dk](http://www.kamstrup.dk)

**kamstrup**

User guide

**MULTICAL® 603**



## User guide

### Energy measurement

MULTICAL® 603 functions as follows:

**The flow sensor** registers the volume of water that circulates through the system in cubic metres [m³].

**The temperature sensors** placed in inlet and outlet register the cooling, i.e. the difference between inlet and outlet temperatures.

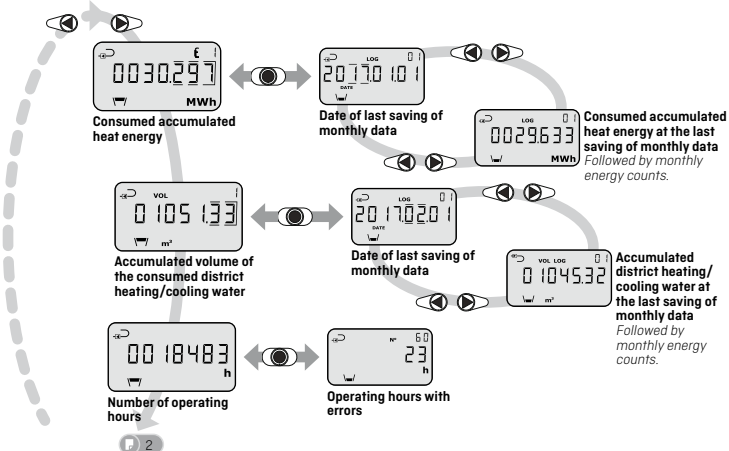
**MULTICAL® 603** calculates the energy consumption on the basis of the volume of water and the temperature difference.

### Readings in the display

When one of the arrow keys (< or >) is activated, a new primary reading is displayed. The primary key (⊙) is used for retrieving historical readings and average values and for returning to primary readings.

Four minutes after the latest activation of any front key, the display automatically changes to energy consumption.

## Displays



### Accumulated product of degrees in inlet and volume in cubic metres

(E8 is used as the basis for the calculation of the average temperature).

€ 8  
64054  
m³ °C

### Summarised product of degrees in outlet and volume in cubic metres

(E9 is used as the basis for the calculation of the average temperature).

€ 9  
33554  
m³ °C

### The average inlet temperature of this year

t 4  
64.83  
°C

### Current inlet temperature

t 1  
62.41  
°C

t 1  
62.90  
°C

**The average inlet temperature of this month**  
*Note!* The average temperature of the month is reset on the target date every month.

### The average outlet temperature of this year

t 4  
32.13  
°C

### Current outlet temperature

t 2  
31.07  
°C

t 2  
31.42  
°C

**The average outlet temperature of this month**  
*Note!* The average temperature of the month is reset on the target date every month.

### Current differential temperature (cooling)

t 2  
31.34  
°C

### Current thermal power

1.15  
kW

MAX  
3.15  
kW

**The highest registered thermal energy of this month**  
Followed by monthly max counts.