

eibSOLO

Time Transmitter and Antenna ZS-DCF + DCF-ANT

Description

The time transmitter is suitable for use with the European Installation Bus system **KNX/EIB** in combination with Lingg&Janke product database. ETS software enables application program to be selected. Specific parameters and physical address can be assigned and downloaded to the device.

The time transmitter transmits the time and date to the KNX/EIB system. It can be used with and without DCF antenna.

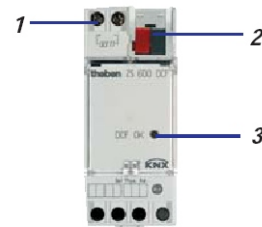
Factory settings of the time transmitter:

- send time and date
- summer/winter time changeover is pre-set and will be realised either with internal crystal time base or DCF signal
- programmed time zone: CET/CEST (Central Europe Time /Summer Time)
- application program allows changes of parameter settings
- If DCF signal is not present, the device is calculating summer/winter time changeover automatically.

Technical Data

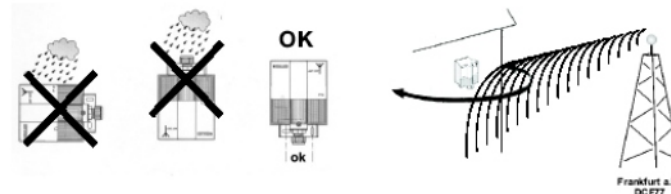
power draw:	10mA max.
operating temperature:	-10 °C ... +50 °C transmitter -20 °C ... +70 °C antenna
protection class:	III
degree of protection:	DIN rail device: IP 20 antenna: IP 54
power reserve:	10 years
length of line for antenna:	100m max.
time accuracy:	1s/d at factory
(without antenna)	The application allows additional alignment to be carried out.
reception area:	approx. 1,000km from Frankfurt/Main

Installation



ZS DCF

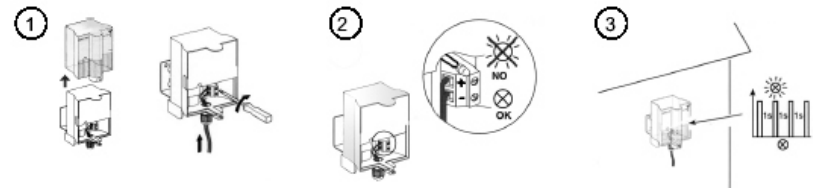
- 1 Connection for the DCF antenna, optional
- 2 Bus connection: **Note the correct polarity!**
- 3 **LED to indicate status (DCF OK)**
(only if DCF antenna is in use)
(reception of time in past 30 hours)



Don't use the antenna in area of:

- TV
- PC
- antenna of telecommunication
- metallic things

Mounting



Polarity of the antenna connection is to be observed!

Yellow coloured LED indicates inaccurate polarity.

Adjust the radio antenna in direction of Frankfurt/Main until the built-in red coloured LED flashes every second.

Configuration

The factory settings of the device do not feature any device or group addresses. The functions required are assigned when setting the parameters. During the planning phase with ETS, objects which are not assigned are not displayed either.

The application program must always be fully downloaded to the device, never partially. Partial download of the program may lead to malfunctions.

Warnings

The device must only be installed and configured by a qualified professional!

If the outlets are connected to different mains phases which are not protected by the same protector unit, a clearly visible note to that effect has to be attached to the device!

Health and safety regulations have to be complied with!

Do not open the device!

A faulty device must be returned immediately to Lingg & Janke OHG!

Lingg & Janke OHG
Zeppelinstraße 30
78315 RADOLFZELL
GERMANY

technical support:
tel. (+49) 7732 - 94557-71

www.lingg-janke.de