





SIEMENS

Presence detector WIDE pro / multi
Präsenzmelder WIDE pro / multi
Déecteur de présence WIDE pro / multi
Detector de presencia WIDE pro / multi
Sensor de presença WIDE pro / multi
Rilevatore di presenza WIDE pro / multi
Varlık dedektörü WIDE pro / multi
Датчик присутствия WIDE pro / multi
存在性检测器 WIDE pro / multi



5WG1258-2DB31	5WG1258-2DB41	5WG1258-2DB51	   
5WG1258-2DB33	5WG1258-2DB43	5WG1258-2DB53	

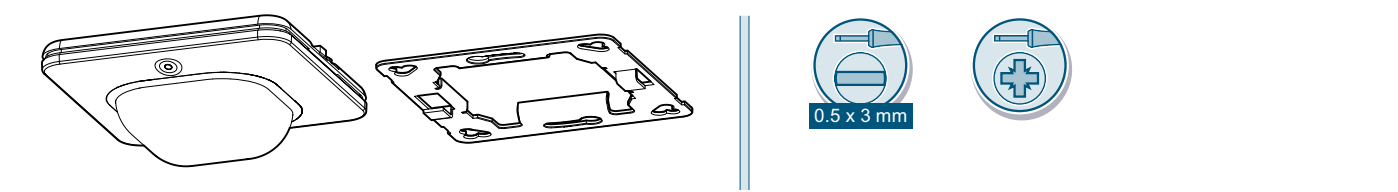
Operating Instructions	Betriebsanleitung	Notice d'utilisation	Instructivo	Istruzioni operative
Instruções de Serviço	İşletme kılavuzu	Руководство по эксплуатации	Bedieningshandleiding	使用说明



Contents / Lieferumfang / Etendue de la livraison /
Contenido / 供货范围

Required tools / Notwendige Werkzeuge /
Outils nécessaires / Herramientas requeridas / 必要工具

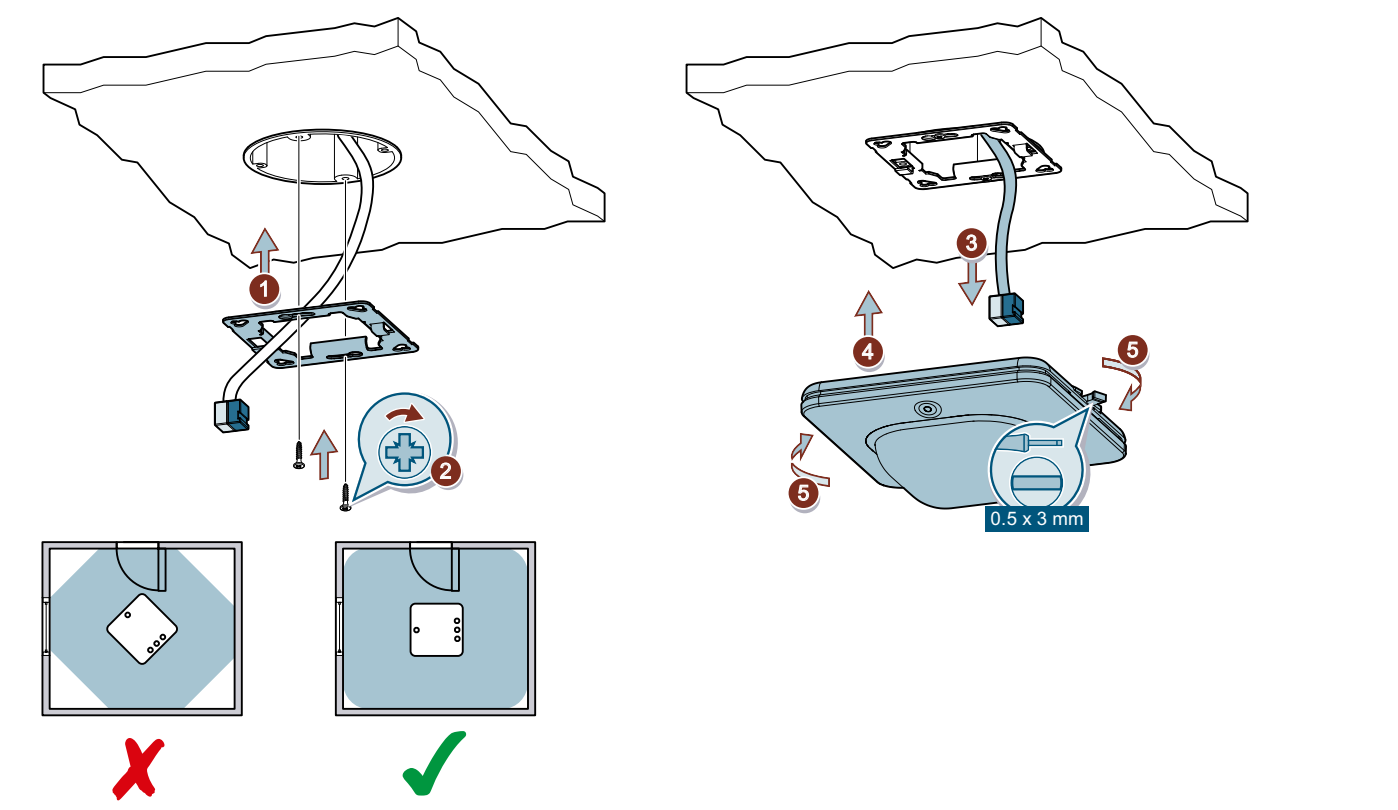






Assembly / Montage / Montage / Montaje / 安装

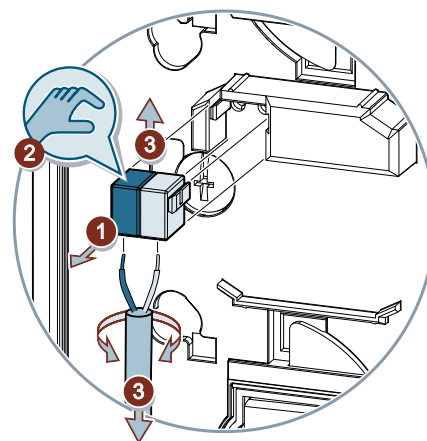
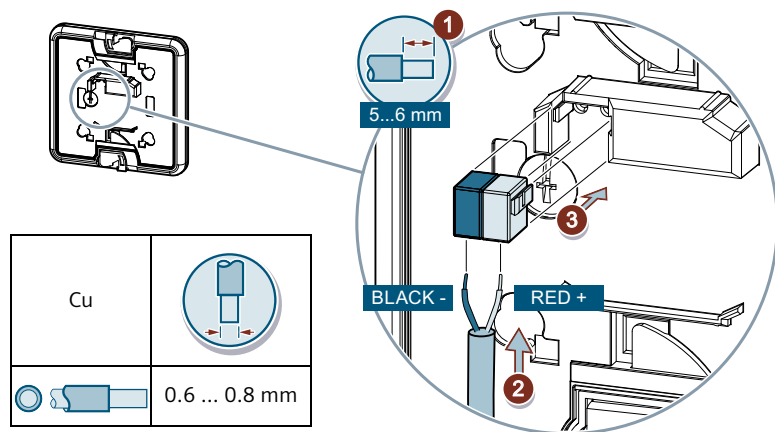






Connection / Anschluss / Raccordement /
Conexión / 连接

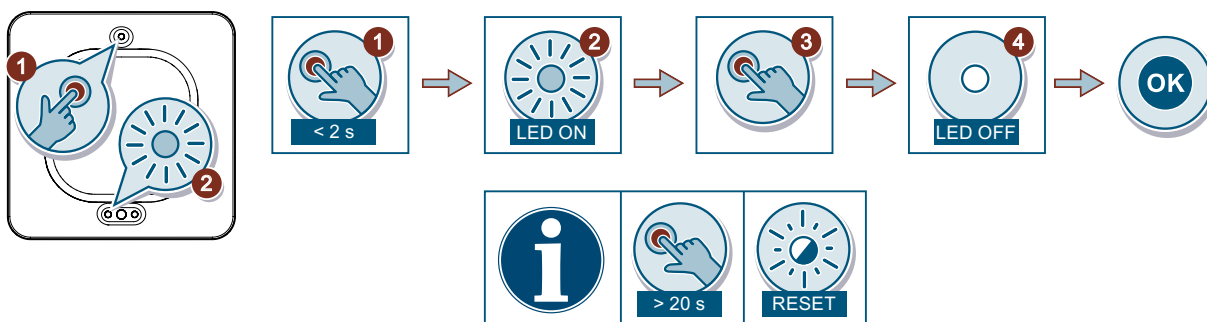
Disconnection / Trennung / D  connexion /
Desconexi  n /   断



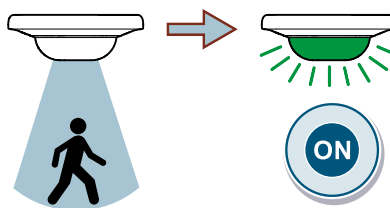
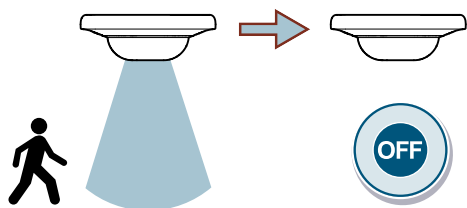
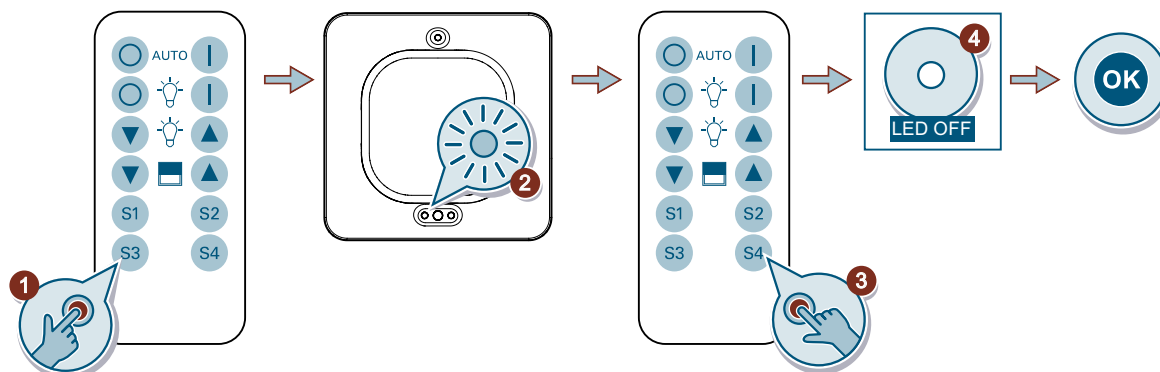
Test / Test / Test / Test / 测试

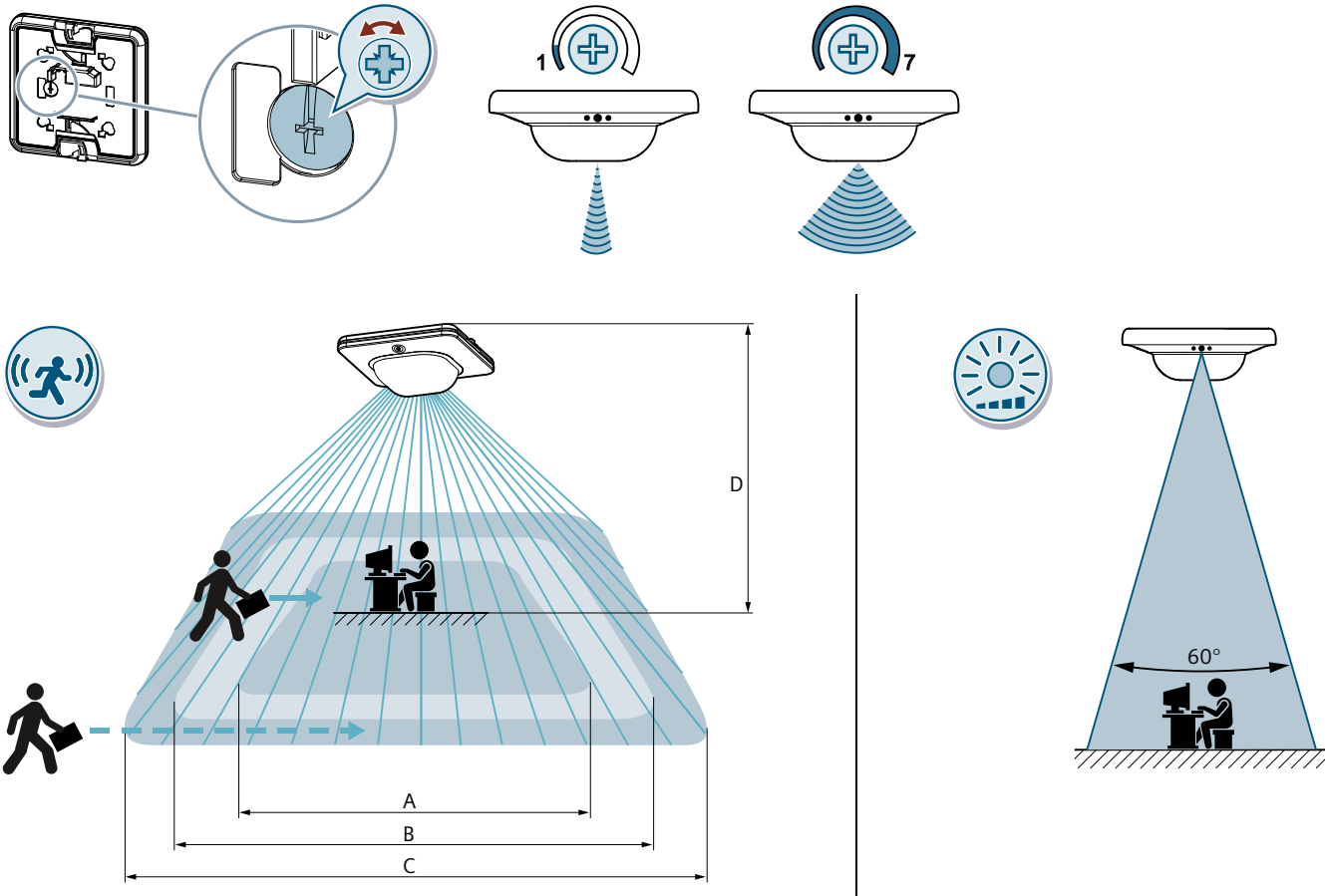




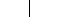






KNX 24VDC typ. SELV



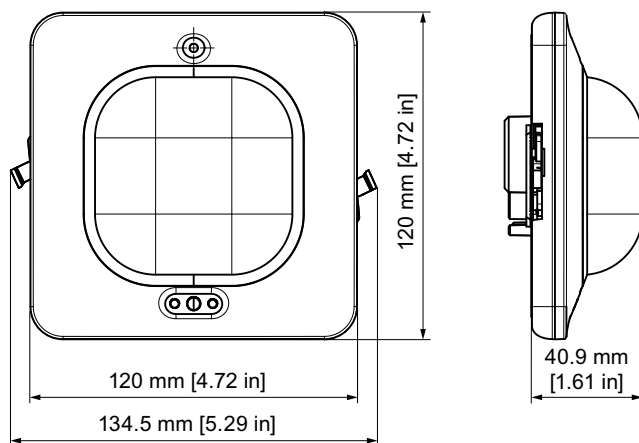
5WG1255-7AB11





		A			B			C		
										
D	2.5 m	3.6 m x 3.6 m	5.2 m x 5.2 m	7.8 m x 7.8 m	3.6 m x 3.6 m	5.2 m x 5.2 m	7.8 m x 7.8 m	4 m x 4 m	6 m x 6 m	18 m x 18 m
	3 m	4 m x 4 m	5.8 m x 5.8 m	8 m x 8 m	4 m x 4 m	5.8 m x 5.8 m	8 m x 8 m	4 m x 4 m	7 m x 7 m	22 m x 22 m
	5 m	-	-	-	6 m x 6 m	7 m x 7 m	8.1 m x 8.1 m	8 m x 8 m	17 m x 17 m	27 m x 27 m
	10 m	-	-	-	7.4 m x 7.4 m	7.5 m x 7.5 m	8 m x 8 m	13 m x 13 m	27 m x 27 m	42 m x 42 m

5WG1258-2DB31	✓	✓	✓	✗	✗
5WG1258-2DB33	✓	✓	✓	✗	✗
5WG1258-2DB41	✓	✓	✓	✓	✗
5WG1258-2DB43	✓	✓	✓	✓	✗
5WG1258-2DB51	✓	✓	✓	✓	✓
5WG1258-2DB53	✓	✓	✓	✓	✓



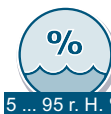
Technical Documentation:
<http://www.siemens.com/gamma-td>



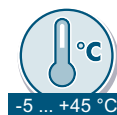
Technical Support
<http://www.siemens.com/supportrequest>



FAQ:
<https://support.industry.siemens.com/cs/ww/en/ps/faq>



5WG1258-2DB31
5WG1258-2DB33



5WG1258-2DB41
5WG1258-2DB43
5WG1258-2DB51
5WG1258-2DB53

Electromagnetic compatibility

USA:

This device complies with part 15 of the FCC Rules. Operation is subject to the following two conditions:

- (1) This device may not cause harmful interference, and
- (2) this device must accept any interference received, including interference that may cause undesired operation.

This equipment has been tested and found to comply with the limits for a Class B digital device, pursuant to part 15 of the FCC Rules. These limits are designed to provide reasonable protection against harmful interference in a residential installation. This equipment generates, uses and can radiate radio frequency energy and, if not installed and used in accordance with the instructions, may cause harmful interference to radio communications. However, there is no guarantee that interference will not occur in a particular installation. If this equipment does cause harmful interference to radio or television reception, which can be determined by turning the equipment off and on, the user is encouraged to try to correct the interference by one or more of the following measures:

- Reorient or relocate the receiving antenna.
- Increase the separation between the equipment and receiver.
- Connect the equipment into an outlet on a circuit different from that to which the receiver is connected.
- Consult the dealer or an experienced radio/TV technician for help.

This device complies with Part 15 of the FCC rules. Changes or modifications not expressly approved by Siemens Schweiz AG could void the user's authority to operate the equipment.

United States representative:

<https://new.siemens.com/us/en/products/buildingtechnologies/home.html>

Canada:

CAN ICES-3(B)/NMB-3(B)

