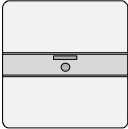
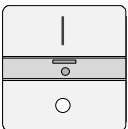
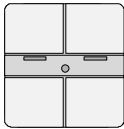
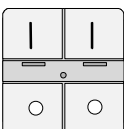
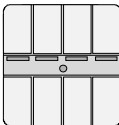
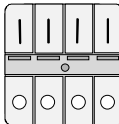


Push button UP 241, 1 - fold	5WG1 241-2AB__
Push button UP 242, 1 - fold	5WG1 242-2AB__
Push button UP 285, 1 - fold	5WG1 285-2AB__
Push button UP 243, 2 - fold	5WG1 243-2AB__
Push button UP 244, 2 - fold	5WG1 244-2AB__
Push button UP 286, 2 - fold	5WG1 286-2AB__
Push button UP 245, 4 - fold	5WG1 245-2AB__
Push button UP 246, 4 - fold	5WG1 246-2AB__
Push button UP 287, 4 - fold	5WG1 287-2AB__



Product	DELTA profil	DELTA style
<b>Push button 1-fold</b>   	pearl grey      5WG1 241-2AB01 titanium white    5WG1 241-2AB11 anthracite        5WG1 241-2AB21 silver              5WG1 241-2AB71	titanium white      5WG1 285-2AB11 basalt black        5WG1 285-2AB21 titanium white metallic silver    5WG1 285-2AB81 basalt black metallic silver    5WG1 285-2AB01
	pearl grey      5WG1 242-2AB01 titanium white    5WG1 242-2AB11 anthracite        5WG1 242-2AB21 silver              5WG1 242-2AB71	
<b>Push button 2-fold</b>   	pearl grey      5WG1 243-2AB01 titanium white    5WG1 243-2AB11 anthracite        5WG1 243-2AB21 silver              5WG1 243-2AB71	titanium white      5WG1 286-2AB11 basalt black        5WG1 286-2AB21 titanium white metallic silver    5WG1 286-2AB81 basalt black metallic silver    5WG1 286-2AB01
	pearl grey      5WG1 244-2AB01 titanium white    5WG1 244-2AB11 anthracite        5WG1 244-2AB21 silver              5WG1 244-2AB71	

Push button UP 241, 1 - fold	5WG1 241-2AB__
Push button UP 242, 1 - fold	5WG1 242-2AB__
Push button UP 285, 1 - fold	5WG1 285-2AB__
Push button UP 243, 2 - fold	5WG1 243-2AB__
Push button UP 244, 2 - fold	5WG1 244-2AB__
Push button UP 286, 2 - fold	5WG1 286-2AB__
Push button UP 245, 4 - fold	5WG1 245-2AB__
Push button UP 246, 4 - fold	5WG1 246-2AB__
Push button UP 287, 4 - fold	5WG1 287-2AB__

<b>Push button 4-fold</b>   	pearl grey titanium white anthracite silver	5WG1 245-2AB01 5WG1 245-2AB11 5WG1 245-2AB21 5WG1 245-2AB71	titanium white basalt black titanium white metallic silver basalt black metallic silver	5WG1 287-2AB11 5WG1 287-2AB21 5WG1 287-2AB81 5WG1 287-2AB01
	pearl grey titanium white anthracite silver	5WG1 246-2AB01 5WG1 246-2AB11 5WG1 246-2AB21 5WG1 246-2AB71		
<b>Frame</b>	ordered separately from the DELTA ranges			
	cut-out frames	_____		
<b>Bus coupling unit</b>	UP 110; UP 114; UP 115			

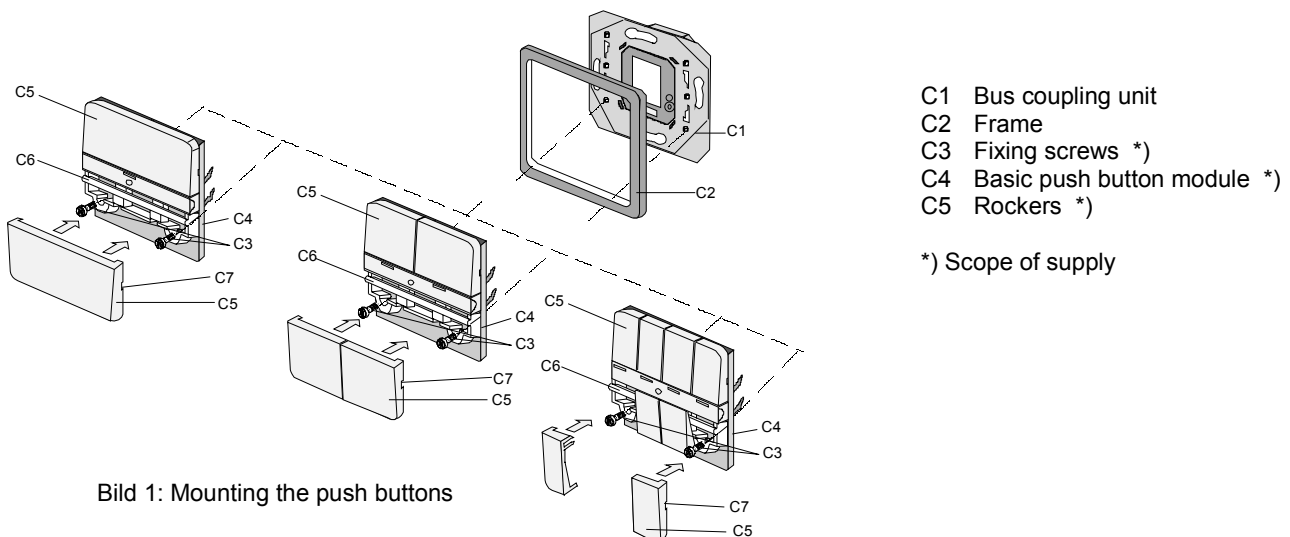


Bild 1: Mounting the push buttons

### Product and Applications Description

There is an upper and a lower operating field on the push buttons. In the middle of the push button there is a note panel in which pictograms can be inserted. This panel also contains display elements (LEDs) for orientation lighting and also for status displays. Opposing rockers are combined to form a pair e.g. for defined switching, dimming, controlling shutters and blinds. It is also possible to carry out the switching functions ON and OFF e.g. via a push button "UP".

Using an application program, the flush-mounted push buttons give commands via the flush-mounted bus coupler for example to actuators for defined switching on/off, for dimming lamps, raising/lowering shutters or for louvre adjustment or other parameterisable functional units.

The device push buttons + IR is placed together with the relevant DELTA frame on the flush-mounted bus coupler and can only function in combination with the bus coupler UP and an appropriate application

Push button UP 241, 1 - fold	5WG1 241-2AB
Push button UP 242, 1 - fold	5WG1 242-2AB
Push button UP 285, 1 - fold	5WG1 285-2AB
Push button UP 243, 2 - fold	5WG1 243-2AB
Push button UP 244, 2 - fold	5WG1 244-2AB
Push button UP 286, 2 - fold	5WG1 286-2AB
Push button UP 245, 4 - fold	5WG1 245-2AB
Push button UP 246, 4 - fold	5WG1 246-2AB
Push button UP 287, 4 - fold	5WG1 287-2AB

program, i.e. the push buttons (with bus coupler UP) consist of the devices (hardware) and the application programs (software).

The bus coupler UP and the relevant frame are not supplied with the device but must be ordered separately.

Using the ETS program (*EIB Tool Software*), the application programs can be selected and the specific parameters and addresses can be assigned.

### Application Programs

#### 12 S1 On-off-toggle/Dim/Shu/Display 211301

- 1 x switching on/off/toggle or
- 2 x toggle
- 1 x dimming or 1 x blinds control
- 1 x display actual state and 1 x orientation light

#### 20 S1 Rocker (BA 2) 907402

(When using UP 114/02)

- 1 x switching on/off/toggle or
- 2 x toggle
- 1 x dimming or 1 x blinds control
- Scene (recall/store)
- 1 x display actual state and 1 x orientation light

### Notes for installation

- The device can be used for permanent interior installations, in dry rooms and for insertion in flush-type boxes.



### WARNING

- The device may only be installed and commissioned by an authorised electrician.
- The device may not be inserted in the same box as 230 V devices.
- The device may be used in switch sockets, if VDE approved devices have been used.
- The prevailing safety and accident regulations must be observed.
- The device may not be opened.
- For planning and construction of electric installations, the relevant guidelines, regulations and standards of the respective country are to be considered.

### Technical data

#### Power supply

Via the flush-mounted bus coupler

#### Operating elements

- 1, 2 or 4 pairs of rockers, idle in the middle position  
The pairs of rockers are interlocked via software so that malfunctions are not triggered when they are operated simultaneously.
- Number of switching cycles: > 20,000

#### Display elements

- per flush-mounted push button device  
1 LED red as a display for orientation
- per pair of push buttons  
1 LED red for status display  
e.g. 4-fold push button = 4 LED red.

#### Connections

10-pole plug connector (PEI): for connection to the flush-mounted bus coupler

#### Mechanical data

- Housing: plastic
- Dimensions:
  - DELTA profil (L x W x D): 65 x 65 x 11 mm
  - DELTA style (L x W x D): 68 x 68 x 14 mm
- Weight: approx. 40 g
- Fire load: approx. 950 kJ ± 10 %
- Mounting: placed on the flush-mounted bus coupler

#### Electrical safety

- Degree of pollution (according to IEC 60664-2): 2
- Type of protection (according to EN 60529): IP 20
- Protection class (according to IEC 61140): III
- Overvoltage category (according to IEC 60664-1): III
- Bus: safety extra-low voltage SELV DC 24 V
- Device complies with EN 50090-2-2 and IEC 60664-1: 1992

#### Reliability

Rate of failure: 27 fit at 40° C

#### EMC requirements

complies with EN 50081-1, EN 61000-6-2 and EN 50090-2-2

Push button UP 241, 1 - fold	5WG1 241-2AB__
Push button UP 242, 1 - fold	5WG1 242-2AB__
Push button UP 285, 1 - fold	5WG1 285-2AB__
Push button UP 243, 2 - fold	5WG1 243-2AB__
Push button UP 244, 2 - fold	5WG1 244-2AB__
Push button UP 286, 2 - fold	5WG1 286-2AB__
Push button UP 245, 4 - fold	5WG1 245-2AB__
Push button UP 246, 4 - fold	5WG1 246-2AB__
Push button UP 287, 4 - fold	5WG1 287-2AB__

**Environmental conditions**

- Climatic withstand capability: EN 50090-2-2
- Ambient operating temperature: - 5 ... + 45 °C
- Storage temperature: - 25 ... + 70 °C
- Relative humidity (not condensing): 5 % to 93 %

**Approval**

EIB-certified

**CE mark**

in accordance with the EMC guideline (residential and functional buildings) and the low voltage guideline

**Location and function of the operating and display elements**

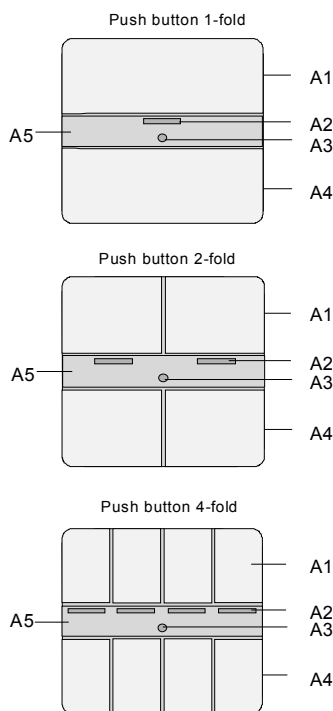


Diagram 2: Location of display and operating elements

- A1 Upper operating field
- A2 LEDs for display
- A3 LED as an orientation light
- A4 Lower operating field
- A5 Cover for pictograms

**Mounting**

General description

The push button + IR is placed together with the relevant frame on the flush-mounted bus coupler. The flush-mounted bus coupler (C1) is connected to the flush-type box and fixed in position (refer to the installation instructions for the bus coupler).

Mounting sequence

- Place the basic push button module (C4, diagram 3) with the relevant frame (C2) on the flush-mounted bus coupler (C1) and press the one strongly upon the other.

Using fixing screws:

- If the fixing screws (C3) are used first of all the rockers (C5) have to be lifted out altogether. This can be achieved by inserting the screwdriver between the frames in the recess (C7) and applying leverage (diagram 4).

Important: The push button module (C4, diagram 3) and the rockers (C5) together with the frame (C2) must be held down / pressed down.

- Screw down the fixing screws (C3).
- The rockers (C5) have to be orientated properly and clicked upon the mounting rack (C6).

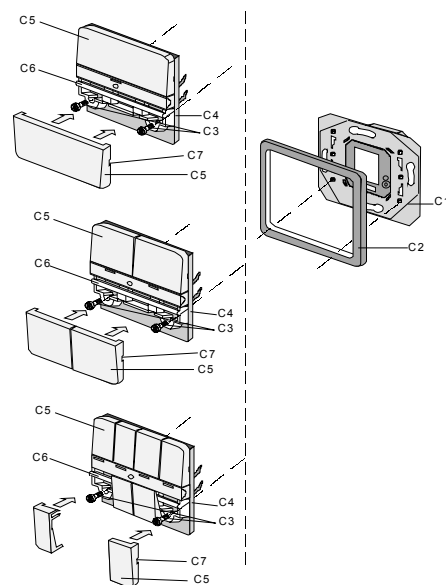
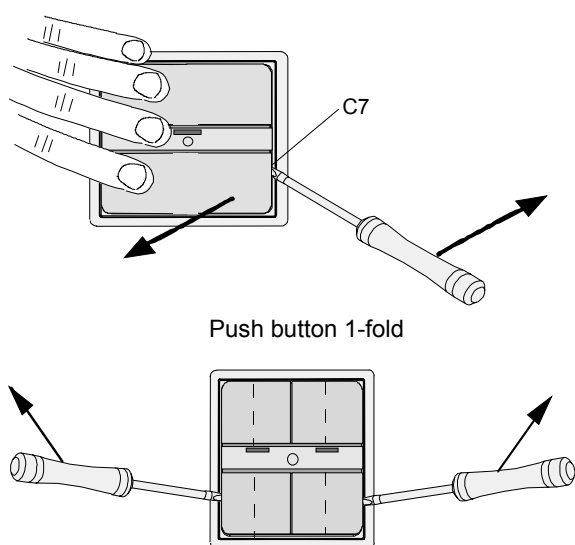


Diagram 3: mounting sequence

Push button UP 241, 1 - fold	5WG1 241-2AB
Push button UP 242, 1 - fold	5WG1 242-2AB
Push button UP 285, 1 - fold	5WG1 285-2AB
Push button UP 243, 2 - fold	5WG1 243-2AB
Push button UP 244, 2 - fold	5WG1 244-2AB
Push button UP 286, 2 - fold	5WG1 286-2AB
Push button UP 245, 4 - fold	5WG1 245-2AB
Push button UP 246, 4 - fold	5WG1 246-2AB
Push button UP 287, 4 - fold	5WG1 287-2AB

### Drawing for mounting the fixing screws



Push button 1-fold

Push button 2-fold / push button 4-fold  
Holding down as shown with push button 1-fold

Diagram 4: Lifting out the rockers

### Inserting pictograms

- Lift out the pictogram cover (A5) with the screwdriver by applying leverage, during this hold down the push button module (C4).

#### DELTA profil

- Insert the screwdriver into the slot (A2) until it reaches the stop and then wiggle it.

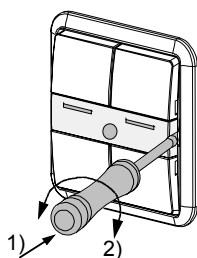
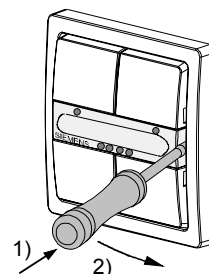


Diagram 5: Lifting out the pictogram cover

- Lay the pictograms onto the foundation.
- Snap on the pictogram cover (A5) again.

#### DELTA style



- 1) Insert the screwdriver between the frame and the push button module.
- 2) Swivel the screwdriver towards the wall.

Diagram 6: Lifting out the pictogram cover

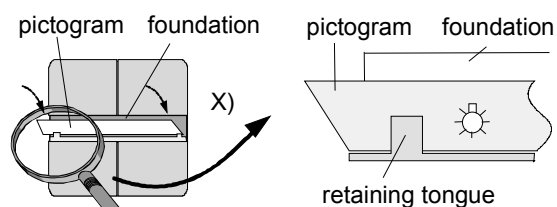


Diagram 7: inserting the pictograms

- Snap on the pictogram cover (A5) again.

### Dismantling

#### Without fixing screws

- Remove the push button (C4, diagram 3) completely together with the frame from the flush-mounted bus coupler (C1):
  - a) with the mere hand
  - b) with a screwdriver beneath the frame / wall

Push button UP 241, 1 - fold	5WG1 241-2AB__
Push button UP 242, 1 - fold	5WG1 242-2AB__
Push button UP 285, 1 - fold	5WG1 285-2AB__
Push button UP 243, 2 - fold	5WG1 243-2AB__
Push button UP 244, 2 - fold	5WG1 244-2AB__
Push button UP 286, 2 - fold	5WG1 286-2AB__
Push button UP 245, 4 - fold	5WG1 245-2AB__
Push button UP 246, 4 - fold	5WG1 246-2AB__
Push button UP 287, 4 - fold	5WG1 287-2AB__

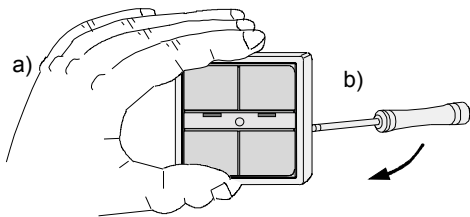


Diagram 8: Dismantling

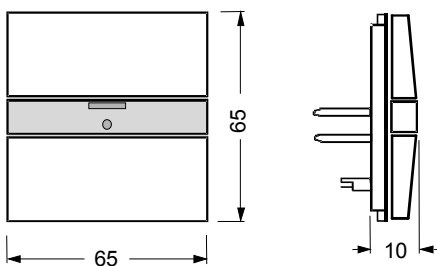
With fixing screws

- Remove the rockers as described at „Mounting / Using fixing screws“.
- Screw out the fixing screws (C3)
- Snap on the rockers (C5) again
- Remove the whole push button module (C4) as described at „ Without fixing screws “.

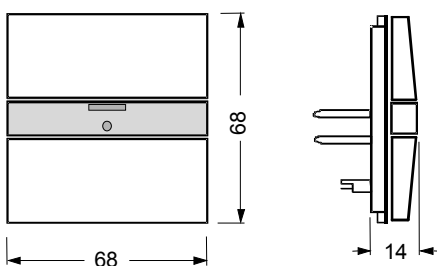
**Dimension Diagram**

Dimensions in mm

DELTA profil



DELTA style



**General Notes**

- Any faulty devices should be returned to the local Siemens office.
- If you have further questions about the product, please contact our Technical Support:

☎ +49 (0) 180 50 50-222  
 ☎ +49 (0) 180 50 50-223  
 ✉ [adsupport@siemens.com](mailto:adsupport@siemens.com)