

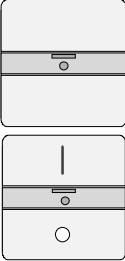
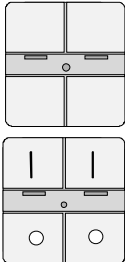
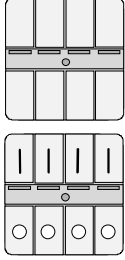
Push button 1-fold UP 241, UP 242, UP 285

Push button 2-fold UP 243, UP 244, UP 286

Push button 4-fold UP 245, UP 246, UP 287

5WG1 241-2A..
5WG1 242-2A..
5WG1 285-2A..
5WG1 243-2A..
5WG1 244-2A..
5WG1 286-2A..
5WG1 245-2A..
5WG1 246-2A..
5WG1 287-2A..

As at: March 2003

Operating and mounting instructions			
Product	DELTA profil		DELTA style
Push button 1-fold 	pearl grey titanium white anthracite silver	5WG1 241-2AB01 5WG1 241-2AB11 5WG1 241-2AB21 5WG1 241-2AB71	titanium white basalt black titanium white metallic silver basalt black metallic silver
	pearl grey titanium white anthracite silver	5WG1 242-2AB01 5WG1 242-2AB11 5WG1 242-2AB21 5WG1 242-2AB71	5WG1 285-2AB11 5WG1 285-2AB21 5WG1 285-2AB81 5WG1 285-2AB01
Push button 2-fold 	pearl grey titanium white anthracite silver	5WG1 243-2AB01 5WG1 243-2AB11 5WG1 243-2AB21 5WG1 243-2AB71	titanium white basalt black titanium white metallic silver basalt black metallic silver
	pearl grey titanium white anthracite silver	5WG1 244-2AB01 5WG1 244-2AB11 5WG1 244-2AB21 5WG1 244-2AB71	5WG1 286-2AB11 5WG1 286-2AB21 5WG1 286-2AB81 5WG1 286-2AB01
Push button 4-fold 	pearl grey titanium white anthracite silver	5WG1 245-2AB01 5WG1 245-2AB11 5WG1 245-2AB21 5WG1 245-2AB71	titanium white basalt black titanium white metallic silver basalt black metallic silver
	pearl grey titanium white anthracite silver	5WG1 246-2AB01 5WG1 246-2AB11 5WG1 246-2AB21 5WG1 246-2AB71	5WG1 287-2AB11 5WG1 287-2AB21 5WG1 287-2AB81 5WG1 287-2AB01
Frame	ordered separately from the DELTA ranges		
	cut-out frames		_____
Bus coupling unit	UP 110; UP 114; UP 115		

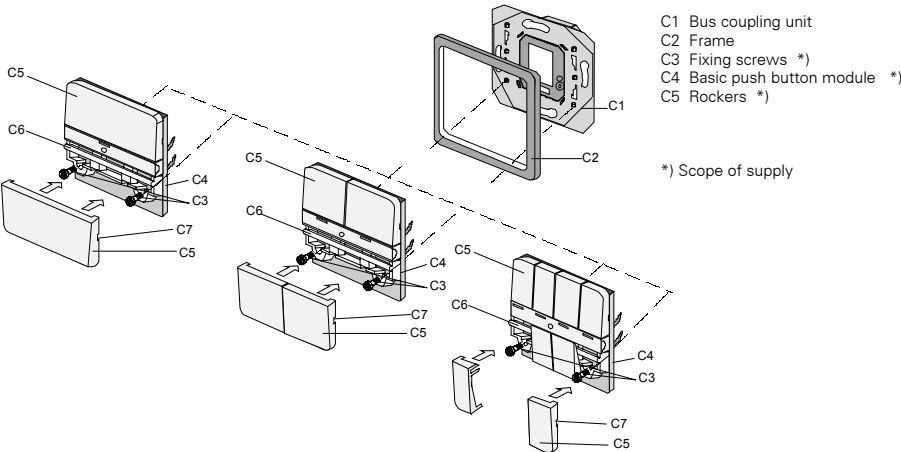


Diagram 1: Mounting the push buttons

Product and functional description

There is an upper and a lower operating field on the push buttons. In the middle of the push button there is a note panel in which pictograms can be inserted. This panel also contains display elements (LEDs) for orientation lighting and also for status displays. Opposing rockers are combined to form a pair e.g. for defined switching, dimming, controlling shutters and blinds.

It is also possible to carry out the switching functions ON and OFF e.g. via a push button "UP".

Using an application program, the flush-mounted push buttons give commands via the flush-mounted bus coupler for example to actuators for defined switching on/off, for dimming lamps, raising/lowering shutters or for louver adjustment or other parameterisable functional units.

The device push buttons + IR is placed together with the relevant DELTA frame on the flush-mounted bus coupler and can only function in combination with the bus coupler UP and an appropriate application program, i.e. the push buttons (with bus coupler UP) consist of the devices (hardware) and the application programs (software).

The bus coupler UP and the relevant frame are not supplied with the device but must be ordered separately.

Using the ETS program (E/B Tool Software), the application programs can be selected and the specific parameters and addresses can be assigned.

Additional Informations

<http://www.siemens.de/gamma>

Technical data

Operating elements

- 1, 2 or 4 pairs of rockers, idle in the middle position

Connections

10-pole plug connector (PEI): for connection to the flush-mounted bus coupler

Mechanical data

- Dimensions:
 - DELTA profil (L x W x D): 65 x 65 x 11 mm
 - DELTA style (L x W x D): 68 x 68 x 14 mm
- Weight: approx. 40 g

Electrical safety

- Type of protection (according to EN 60529): IP 20

Environmental conditions

- Ambient operating temperature: - 5 ... + 45 °C
- Storage temperature: - 25 ... + 70 °C
- Relative humidity (not condensing): 5 % to 93 %

Location and function of the operating and display elements

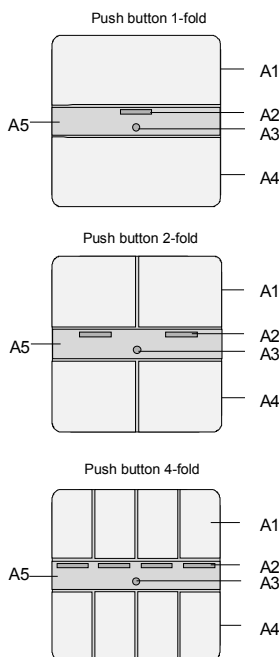


Diagram 2: Location of display and operating elements

- A1 Upper operating field
- A2 LEDs for display
- A3 LED as an orientation light
- A4 Lower operating field
- A5 Cover for pictograms

Mounting

- The device can be used for permanent interior installations, in dry rooms and for insertion in flush-type boxes.

WARNING

- The device may only be installed and commissioned by an authorised electrician.
- The device may not be inserted in the same box as 230 V devices.
- The device may be used in switch sockets, if VDE approved devices have been used.
- The prevailing safety and accident regulations must be observed.
- The device may not be opened.
- For planning and construction of electric installations, the relevant guidelines, regulations and standards of the respective country are to be considered.

General description

The push button + IR is placed together with the relevant frame on the flush-mounted bus coupler. The flush-mounted bus coupler (C1) is connected to the flush-type box and fixed in position (refer to the installation instructions for the bus coupler).

Mounting sequence

- Place the basic push button module (C4, diagram 3) with the relevant frame (C2) on the flush-mounted bus coupler (C1) and press the one strongly upon the other.

Using fixing screws:

- If the fixing screws (C3) are used first of all the rockers (C5) have to be lifted out altogether. This can be achieved by inserting the screwdriver between the frames in the recess (C7) and applying leverage (diagram 4).

Important: The push button module (C4, diagram 3) and the rockers (C5) together with the frame (C2) must be held down / pressed down.

- Screw down the fixing screws (C3).
- The rockers (C5) have to be orientated properly and clicked upon the mounting rack (C6).

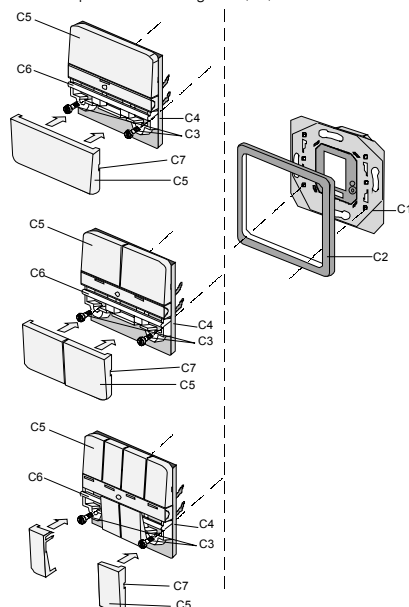
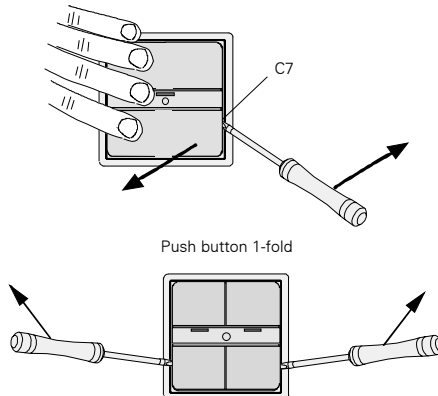


Diagram 3: mounting sequence

Drawing for mounting the fixing screws (C3)



Push button 2-fold / push button 4-fold
Holding down as shown with push button 1-fold

Diagram 4: Lifting out the rockers

Inserting pictograms

- Lift out the pictogram cover (A5) with the screwdriver by applying leverage, during this hold down the push button module (C4).

DELTA profil

- Insert the screwdriver into the slot (A2) until it reaches the stop and then wiggle it.

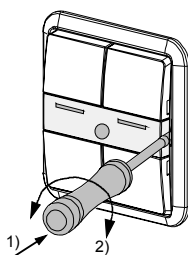
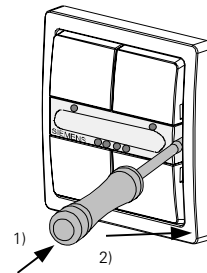


Diagram 5: Lifting out the pictogram cover

- Lay the pictograms onto the foundation.
- Snap on the pictogram cover (A5) again.

DELTA style



- 1) Insert the screwdriver between the frame and the push button module
- 2) Swivel the screwdriver towards the wall.

Diagram 6: Lifting out the pictogram cover

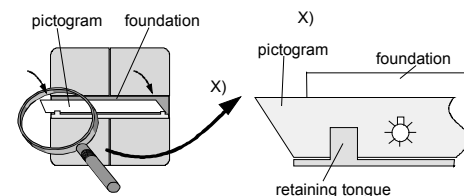


Diagram 7: inserting the pictograms

- Snap on the pictogram cover (A5) again.

Dismantling

Without fixing screws

- Remove the push button (C4) completely together with the frame (C2) from the flush-mounted bus coupler (C1):
 - a) with the mere hand
 - b) with a screwdriver beneath the frame / wall

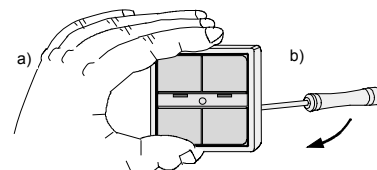


Diagram 8: Dismantling

With fixing screws

- Remove the rockers as described at „Mounting / Using fixing screws“.
- Screw out the fixing screws (C3)
- Snap on the rockers (C5) again
- Remove the whole push button module (C4) as described at „Without fixing screws“.

General Notes

- Any faulty devices should be returned to the local Siemens office.
- If you have further questions about the product, please contact our Technical Support:

+49 (0) 180 50 50-222
+49 (0) 180 50 50-223
✉ adsupport@siemens.com