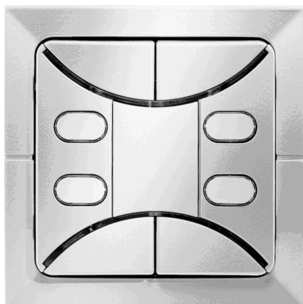


**Push Button UP 284
4-fold**
5WG1 284-2AB__
Product and Applications Description


The push button UP 284 is available in the following colours, matching the designs of the switches series DELTA ambiente:

DELTA ambiente, arctic white / arctic white	5WG1 284-2AB01
DELTA ambiente, arctic white / soft grey	5WG1 284-2AB02
DELTA ambiente, arctic white / steel	5WG1 284-2AB03
DELTA ambiente, cosmos grey / CORIAN	5WG1 284-2AB11
DELTA ambiente, royal blue / wood	5WG1 284-2AB21

It requires a bus coupling unit UP and an appropriate application program to work properly, i.e. the push button UP 284 (in combination with a bus coupling unit UP) consists of the devices (hardware) and the application program (software).

The push button UP 284 is slid onto the bus coupling unit UP together with its (DELTA ambiente) frame. The electric connection between the push button UP 284 and the bus coupling unit UP is established via a physical external interface (PEI).

The bus coupling unit UP and "DELTA ambiente" frame are not included and therefore have to be ordered separately (see catalogue issue in force)

Various application programs are available for the different tasks the push button can handle.

With an appropriate application program the push button UP 284 can control actuators via its bus coupling unit, e.g. for defined on and off switching, dimming fluorescent lamps or for raising and lowering venetian blinds and adjusting the louvres.

The device can be operated via 8 push buttons (2 buttons per channel). Opposite rockers are combined for

switching purposes e.g. for defined switching, dimming, controlling sliding shutters and blinds.

Individual LED displays which can be used e.g. as status display are assigned to each channel and the LED displays on each push button can be also used as orientation lights.

With the ETS (*EIB Tool Software*) the application program is selected, its parameters and addresses are assigned appropriately, and downloaded to the bus coupling unit UP.

Application Programs
12 S4 On-Off/Dim/Shutter 241401

- 4 x switching on and off
- 8 x send value (allows to send 1 value per depression point)
- 4 x dimming or 4 x blinds control
- tasks can be mixed as desired
- 4 x state display and 1 x orientation light

12 S4 On/Off/Toggle/Value 241D01

- 4-way rocker switch for on/off or value
- LEDs as status display and orientation light

20 S4 Rocker (BCU2) 907802

(If UP 114/02 is used)

- per rocker switch for dimming, shutter control or on/off/toggle
- scenes (retrieve / save)
- LEDs as status display or orientation light

Installation Instructions

- The device may be used for permanent interior installations in dry locations within box mounts.


WARNING

- The device must be mounted and commissioned by an authorised electrician.
- The device must not be installed in box mounts together with 230 V devices.
- The device may be mounted to switch and socket combination box mounts if VDE-certified devices are used exclusively.
- The prevailing safety rules must be heeded.
- The device must not be opened. A device suspected faulty should be returned to the local Siemens office.

Push Button UP 284
4-fold

5WG1 284-2AB__

Technical Specifications

Power supply

via bus coupling unit UP

Control elements

- 8 opposite rocker switches
combined to functional pairs (like a single rocker switch with neutral position) that are interlocked mutually via the software to avoid malfunctions if both rockers are operated simultaneously
- operating cycles per rocker switch: > 20000

Display elements

- 4 red LEDs for orientation and mode display
- 1 red LEDs as orientation light

Connections

10-pin connector (PEI):
for connection to a bus coupling unit UP

Physical specifications

- housing: plastic
- dimensions:
(L x W x D): 65 x 65 x 14 mm (without. spring)
(L x W x D): 65 x 65 x 28 mm (incl. spring)
- weight: approx. 80 g
- fire load: approx. 750 kJ ± 10 %
- mounting: placed on the flush-mounted bus coupler and screwed into position

Electrical safety

- fouling class (according to IEC 664-1): 2
- protection (according to EN 60529): IP 20
- protection class (according to IEC 1140): III
- overvoltage class (according to IEC 664-1): III
- bus: safety extra low voltage SELV DC 24 V
- device complies with
EN 50 090-2-2 and IEC 664-1: 1992

Reliability

rate of failure: 75 fit at 40 °C

Electromagnetic compatibility

complies with
EN 50081-1, EN 50082-and EN 50090-2-2

Environmental specifications

- climatic conditions: EN 50090-2-2
- ambient temperature operating: - 5 ... + 45 °C
- ambient temperature non-op.: - 25 ... + 70 °C
- relative humidity (non-condensing): 5 % to 93 %

Certification

EIB certificate

CE norm

complies with the EMC regulations (residential and functional buildings), and low voltage regulations

Location and Function of the Display and Operator Elements

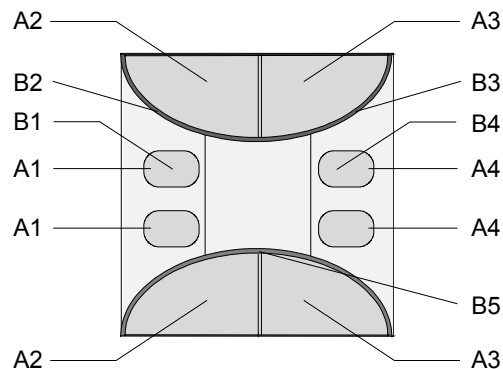


Figure 1: Location and function of the display and operator elements

- A1 Pair of push buttons channel 1
- A2 Pair of push buttons channel 2
- A3 Pair of push buttons channel 3
- A4 Pair of push buttons channel 4
- B1 LED for status display channel 1
- B2 LED for status display channel 2
- B3 LED for status display channel 3
- B4 LED for status display channel 4
- B5 LED for orientation

Push Button UP 284
4-fold

5WG1 284-2AB__

Mounting and Wiring

General description

The push button is slid onto the bus coupling unit UP together with its frame (DELTA profil). During this the electric connection between the push button and the bus coupling unit UP is established via the physical external interface (PEI).

Mounting

- The bus coupling unit UP is mounted into a flush-mount box (see installation instruction of the bus coupling unit UP).
- Remove the rocker switch(es) from push button's main module (by meshing laterally into the recesses for the screwdriver).
- Slip the push button's main module together with its frame (DELTA profil) onto the bus coupling unit UP.
- Attach the push button's main module to the bus coupling unit UP with the ready-assembled screws and slip the rocker switch(es) back on again.
- For inserting the labels the cover (see illustration, A5) of the labelling area must be removed from the push button. Therefore handle the cover by its cut-out on the side with a screwdriver. Insert label and slide the cover back onto the push button.

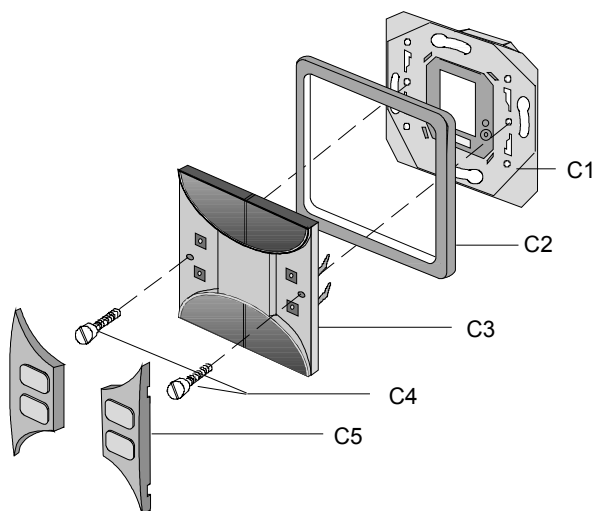


Figure 2: Mounting the push button
(basic representation)

- C1 Bus coupling unit UP
- C2 Frame
- C3 Push button base module
- C4 Mounting screws
- C5 Covers

Inserting the pictograms

A set of pictograms is supplied for the pairs of push buttons for channel 1 and channel 4.

Insertion: The four pairs of push buttons have a slot at the side for lifting out the perspex covers. Insert the selected pictogram in the cover and then press on the basic push button module. (See figure 3)

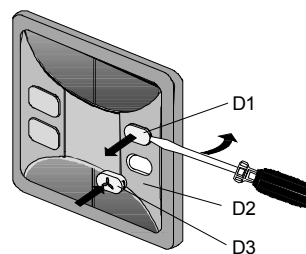
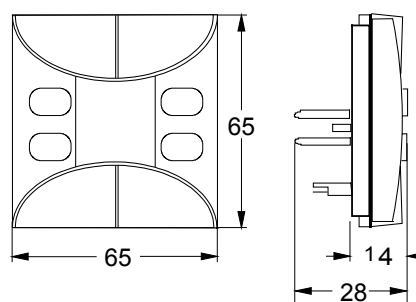


Figure 3: Inserting the pictograms

- D1 Perspex cover
- D2 Cover
- D3 Perspex cover with pictogram inserted

Dimension Diagram

Dimensions in mm



Push Button UP 284 4-fold	5WG1 284-2AB__
------------------------------	----------------

Notes