



Product and Applications Description

For wireless control of actuators, the IR wall switch transmitter AP 422 sends IR signals that are picked up by the IR receiver S 440 and forwarded to the IR decoder N 450 for conversion to appropriate bus telegrams. Thus, the IR wall switch transmitter AP 422 can send commands to actuators for defined on/off switching, dimming lights, raising/lowering venetian blinds or adjusting louvers. The IR wall switch transmitter AP 422 provides four preselection buttons for four separate groups of actuators that can be controlled via a rocker switch after the appropriate button has been selected.

Note: Batteries (J type FLATPACK Alkaline, 6V) must be purchased separately.

Application Programs

No application program required.

Technical Specifications

Control power supply

Battery FLATPACK Alkaline, 6V, Type J
(must be purchased separately:
order-no. 5WG1 490-8AA81)

IR transmitting unit

- Light wave length: 950nm
- Transmission frequency: 458 kHz
- Transmission range:
5WG1 422-3AB11: approx. 8m (24')
non-focussed, requires direct line of sight to receiver
- Available channels: 4 of 64

Channel selection elements

For channel selection rotary switch (located in the casing, accessible once the back is removed)

Control elements

- Preselection: 4 preselection buttons
- Operation: single two state switch

Display elements

- 1 red LED for monitoring transmissions and battery
- 1 red LED for indicating the preselection

Physical specifications

- polymer casing
- dimensions (W x H): 75 x 115 mm
- weight: approx. 80 g (3oz) (without batteries)

Electrical safety

- protection (according to EN 60529): IP 20
- overvoltage class: III

Electromagnetic compatibility

complies with Part 15 of the FCC rules pursuant to the limits for a Class A digital device

Environmental specifications

- ambient temperature operating: - 5 - + 45 °C (23-113°F)
- Maximum ambient temperature range:
- 25 - + 70 °C (-13-158°F)
- relative humidity (non-condensing): 5 % to 93 %

Listings and Certifications

UL listed (173 174)

UL 916, Energy Management Equipment Accessory

CSA certified

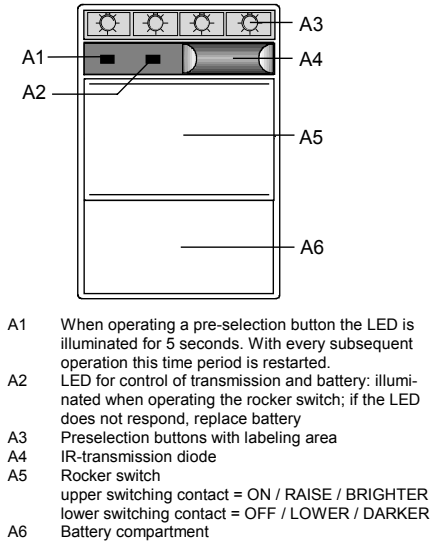
(pending)

CE marked

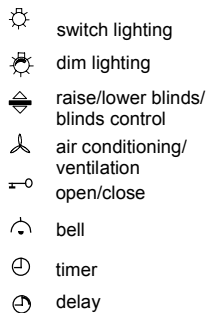
complies with EMC regulations (residential and non-residential buildings), and low voltage regulations

EIB certified

Location and Function of the Control Elements and Display



Label Legends Included

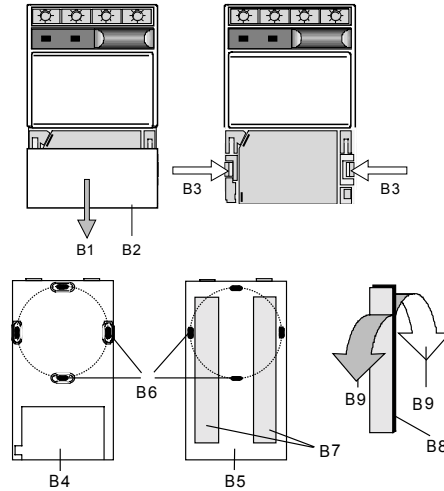
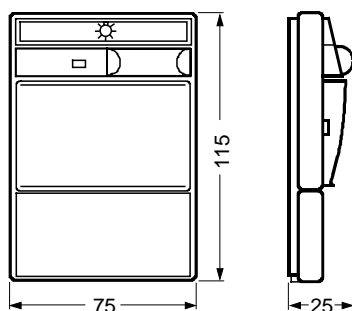


The above can be combined in any order.

To insert the label the cover of the labeling area must be removed from the IR transmitter. Therefore handle the cover by its cut-out on the side with a screwdriver. Lay in the needed label between the paper strip and the cover and slide the cover back onto the IR transmitter.

Dimension Diagram

Dimensions in mm



Mounting

Installation notes

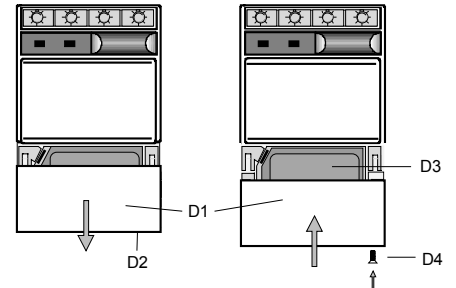
- When selecting the mounting location ensure an unobstructed direct line of sight between transmitter and receiver especially if persons may be in front of the transmitter.
- The IR transmitter can be mounted either with screws or with the included double-sided adhesive tape.
- The battery compartment can be secured with the provided screw.

Mounting the IR transmitter with screws

- Open the transmitter:
 - Open the battery compartment (B1)
 - Remove security screw (B2)
 - Push back the clamps inside the battery compartment (B3) and remove device from base plate (B4).
- Pierce the horizontal or vertical slots (B6) of the base plate (B4) with a screw driver or similar tool.
- Mount the base plate (B4) with screws (add dowels if necessary).
- Mount the device on the base plate by hanging it into the base plate on top and snapping it into the base plate clamps (B3).
- Insert the battery and slide the compartment lid (B1) on.
- Secure the battery compartment lid with the security screw (B2).

Mounting the IR transmitter with double-sided tape

- Remove one of the protective films (B9) from the double-sided tapes and attach the tapes in the recesses (B7) at the back of the device.
- Remove the remaining protective films (B9) from the double-sided tapes and press the base plate on a smooth surface free of dust and grime.



Battery change

Changing the battery

- Remove the security screw (D2) from the battery compartment lid (D1).
- Slide the battery compartment lid down (see arrow) and take it off.
- Remove the empty battery and replace with new battery (D3) (FLATPACK Alkaline, 6 V order-no.: 5WG1 490-8AA81)
- Slide battery compartment lid (D1) on from below and secure with security screw (D4).

Note: Do not operate IR transmitter switches when replacing the battery!

Set IR Transmission Channel

The IR wall switch transmitter uses four IR channels (one channel per pre-selection button) out of a maximum of 64 available IR channels.

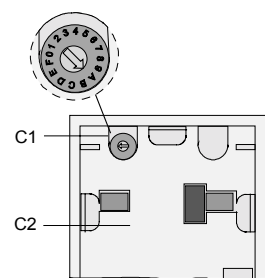
The desired transmission channels are selected with a wheel at the back of the device. Therefore the transmission channels should be selected before mounting the device on the base plate. To access the channel selection wheel later, the IR transmitter has to be dismantled from the base plate.

Channel assignment according to the wheel settings

Wheel setting	Channel, pre-selection buttons			
	Left	Left middle	Right middle	Right
0	0	1	2	3
1	4	5	6	7
2	8	9	10	11
3	12	13	14	15
4	16	17	18	19
:	:	:	:	:
D	52	53	54	55
E	56	57	58	59
F	60	61	62	63

Set transmission channel

The transmission channel is selected with the wheel (C1) at the back of the device (C2).



- C1 Wheel with settings 0-F
C2 IR wall switch transmitter (rear view)