

## MECtp

### Linecoupler connecting two KNX bus lines

„The first member of a family of media connection devices.“

The new MECtp commonly known as “line coupler” is the first member of our family of media coupling devices. The basic functionality of MECtp is coupling a mainline “Twisted pair” with a sub line “Twisted pair”.

MECtp provides galvanic isolation between the two connected lines. Due to the flexibility of MECtp, the coupler can be used as a line coupler to connect a line with a main line or a backbone coupler to connect a main line with a backbone line. The main task of MECtp is filtering the traffic according to the installation place in the hierarchy or according to the built in filter tables for group oriented communication.

The MECtp provides outstanding features compared to other similar products, for example support for long messages (up to 250 byte length) and a configurable one button activation of special functions. These are helpful during installation, during run time and for trouble shooting. The high informative 6 duo LED display shows accurate the bus status on each line. This helps identifying common communication problems due to bus load or retransmissions on both lines.

Available functions are:

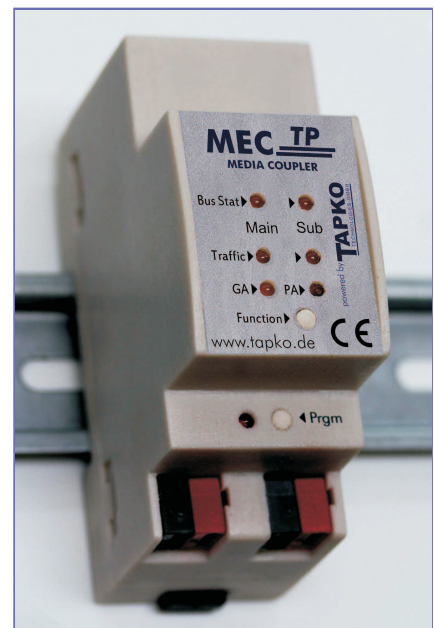
- suppress device configuration on the sub line
- enable or disable filtering of group messages
- suppress device oriented messages
- trace the traffic on the sub line
- reduced number of retransmissions



### The twin connection

## Advantages

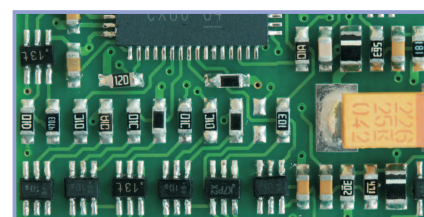
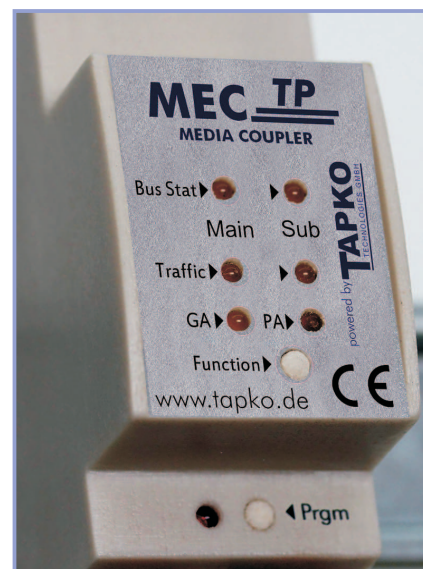
- Long messages up to 250 byte length
- One button function activation
- Extensive operation status indication with 6 duo LED
- Added diagnostic functions
- Low current consumption
- Manual enable / disable filter functions



# ideas for an intelligent life

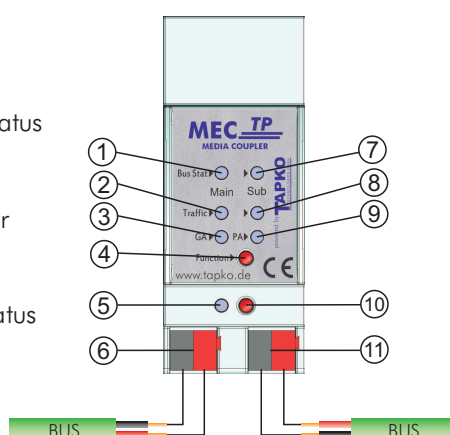
## Data

Marking	MEC <sub>TP</sub>
Supply	Bus main line: current consumption from bus 10 mA max.
Connections	Main and sub line, KNX Wago bus connecting terminal (red/black) screwless
Display elements	main line bus status LED, main line traffic LED sub line bus status LED, sub line traffic LED Group address filter table status Physical address filtering status Programming LED
Installation	on 35 mm DIN rail mount EN 60715 TH 35-75
Temperature range	Operation 0°C ... +45°C non condensating Storage -20°C ... +60°C
Housing, color	Plastic housing, grey
Type of protection	IP 20
Protection class	Class II
CE-indication	in accordance with EMC and low voltage guidelines
Certification	KNX
Dimensions	90 x 36 x 70 mm (H x W x D)
Mounting depth	64 mm
Width in modules	2 units (unit = 18mm)
Weight	0,1 kg



## Wiring diagram

- 1 main line bus status LED
- 2 main line traffic LED
- 3 group address filter table status
- 4 function select key
- 5 programming LED
- 6 main line WAGO connector
- 7 sub line bus status LED
- 8 sub line traffic LED
- 9 physical address filtering status
- 10 programming key
- 11 sub line WAGO connector



006.002E

The data contained herein are subject to change without notice.

**TAPKO**  
TECHNOLOGIES GMBH

Im Gewerbepark A 15, 93059 Regensburg

+49941 307470 +49941 3074729

@info@tapko.de

www.tapko.de