

### FEATURES

- Simple push button for 2 binary inputs
- Available cover colours:
  - Anthracite RAL 9004 (x = A)
  - Silver RAL 9006 (x = S)
  - Matt white RAL 9016 (x = MW)
  - Champagne RAL 1035 (x = C)
- Flush fitting with ZS55 series 1 to 4-gang frames (sold separately, with reference 980000Y0X, where Y = number of gangs, X = colour)
  - Anthracite RAL 9004 (X = 5)
  - Silver RAL 9006 (X = 6)
  - Matt White RAL 9016 (X = 9)
  - Champagne RAL 1035 (X = 4)
- Dimensions 55 x 55 x 29 mm
- Low profile: the decorative frame protrudes 9.5 mm from the wall
- Flush-mounted installation
- Conformity with the CE, UKCA, RCM directives (marks on the back side)

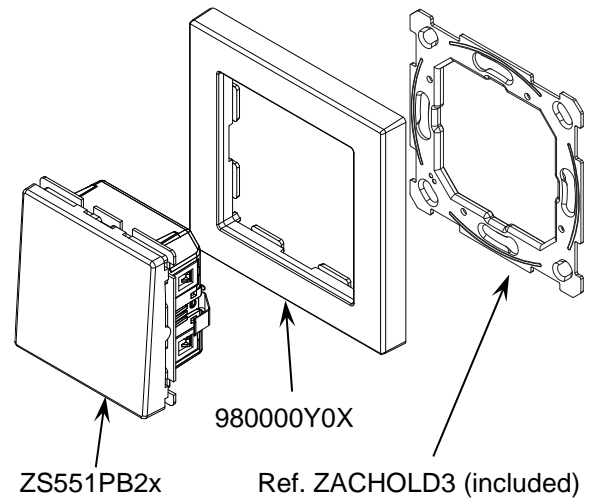


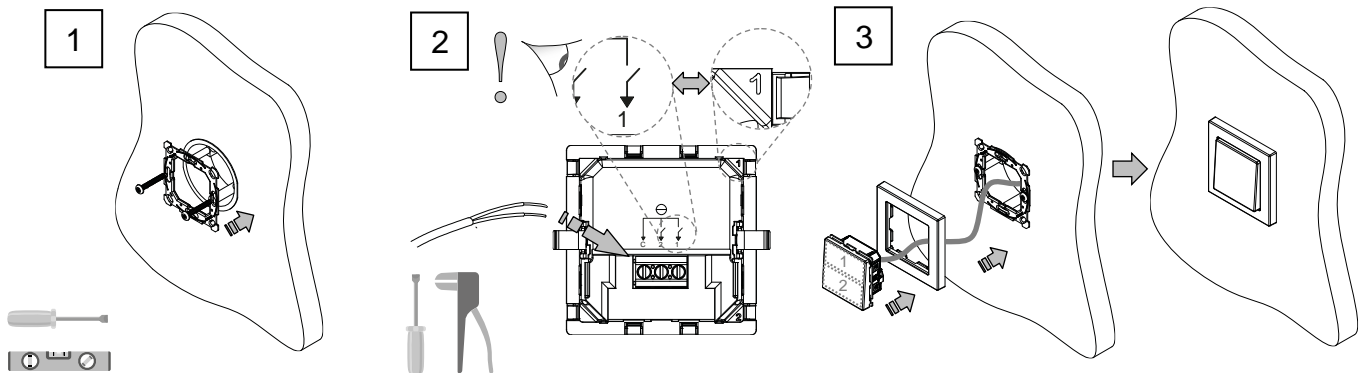
Figure 1. ZS551PB2x

GENERAL SPECIFICATIONS	
CONCEPT	DESCRIPTION
Number of inputs	2
Maximum voltage	12 VDC
Maximum current	10 mA
Switching type	Dry voltage contacts between input and common
Connection method	Screw terminal block (0.5 Nm max.)
Cable cross-section	0.5-2.5 mm² (IEC) / 26-12 AWG (UL)
Operation temperature	0 .. +55 °C
Storage temperature	-20 .. +55 °C
Operation humidity	5 .. 95% RH
Storage humidity	5 .. 95% RH
Degree of protection	IP20, clean environment
Installation	Independent device to be installed in back boxes
Mechanical lifetime (min. cycles)	100 000
Weight	55.6 g
Housing material	PC+ABS FR V0 halogen free

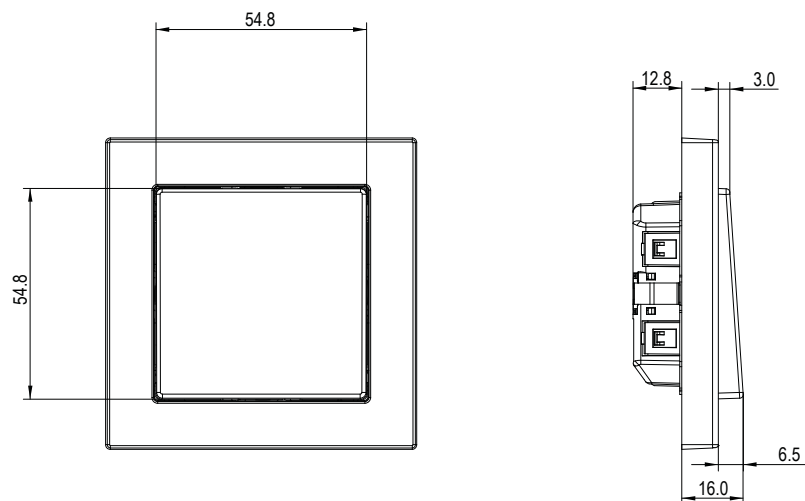
## INSTALLATION INSTRUCTIONS

1. Fix the metal plate into a square or round back box by using the screws from the box, checking that it is levelled.
2. Get the cables through the frame and connect them into the suitable terminal on the back of the device, considering the 2 push areas.
3. Fit the device into its final position and check that the strength of the clips is enough to fix the device.

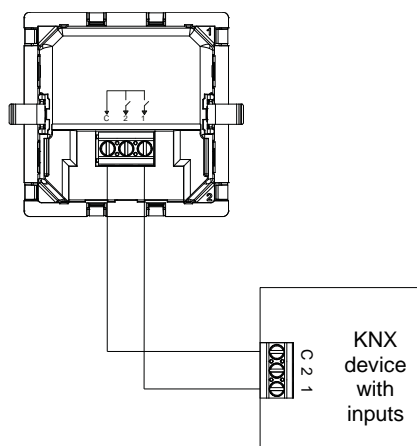
To remove it, proceed the reverse way.



## DIMENSIONS (mm)



## WIRING DIAGRAM



## SAFETY INSTRUCTIONS AND ADDITIONAL NOTES

- Installation should only be performed by qualified professionals according to the laws and regulations applicable in each country.
- The facility must be equipped with a device that ensures the omnipolar sectioning. Installation of a 10 A mini-circuit-breaker is recommended. To prevent accidents, it must remain open in case of manipulation of the device.
- Keep the device away from water (condensation over the device included) and do not cover it with clothes, paper or any other material while in use.
- The WEEE logo means that this device contains electronic parts and it must be properly disposed of by following the instructions at <https://www.zennio.com/en/legal/weee-regulation>.

