

FEATURES

- Euro-American socket insert with USB type C and power delivery (reference ZS55IEUA1US)
- Available cover colours (sold separately, with reference ZS55CEUA1USX, where X = colour):
 - Anthracite RAL 9004 (X=A)
 - Silver RAL 9006 (X=S)
 - Matt White RAL 9016 (X=W)
- Flush fitting with ZS55 series 1 to 4-gang frames (sold separately, with reference 980000Y0X, where Y = number of gangs, X = colour)
 - Anthracite RAL 9004 (X=5)
 - Silver RAL 9006 (X=6)
 - Matt White RAL 9016 (X=9)
 - Gloss White RAL 9003 (X=8)
- The use of fixing clamps is optional. This reference is sold separately (reference ZACZSCLA)
- Compatible plugs:
 - European plugs (type C and F)
 - American plugs (type A and B)
- Childproof safety shutter
- Dimensions 55.5 x 55.5 x 46.3 mm
- Low profile: it protrudes 9.5 mm from the wall
- Flush-mounted installation

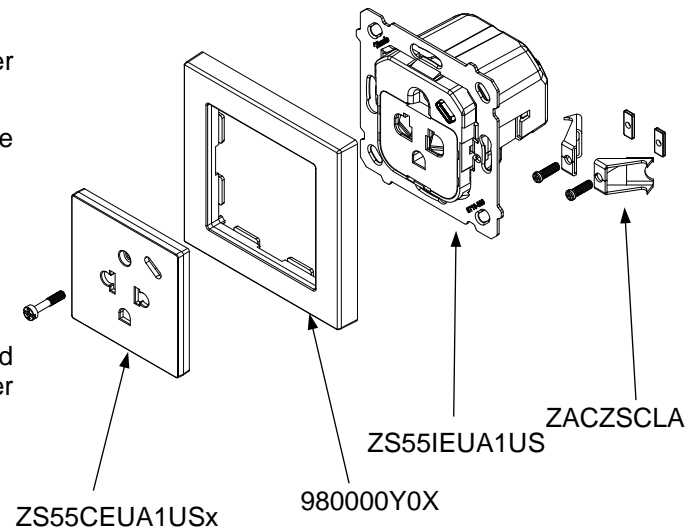


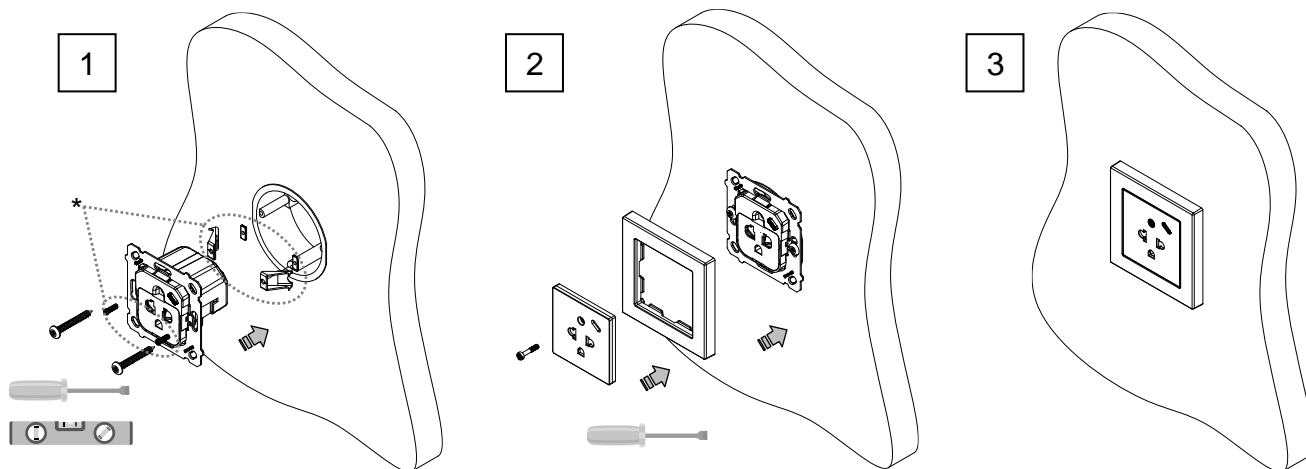
Figure 1. Euro-American socket insert with USB type C

GENERAL SPECIFICATIONS		
CONCEPT		DESCRIPTION
Socket	Rated voltage	110-250 VAC
	Rated current	16 A
	Socket type	Euro-American
USB	Input voltage	110-250 VAC 50/60 Hz
	Maximum consumption	215 mA @ 110 VAC / 115 mA @ 230 VAC
	Connector type	USB type C
	Fast charging	YES
	Output current	2.4 A - 5 V (12 W) / 1.67 A - 9 V (15 W)
Connection method		Screw terminal block (0.25 Nm max.)
Maximum cable cross-section		2x 2.5 mm ² (IEC) / 12 AWG (UL)
Operation temperature		0 .. +40 °C
Storage temperature		-20 .. +55 °C
Operation humidity		5 .. 95% RH
Storage humidity		5 .. 95% RH
Degree of protection		IP20, clean environment
Installation		Independent device to be installed in back boxes.
Weight		92 g
Housing material		PC FR V0 halogen free and PC+ABS FR V0 halogen free

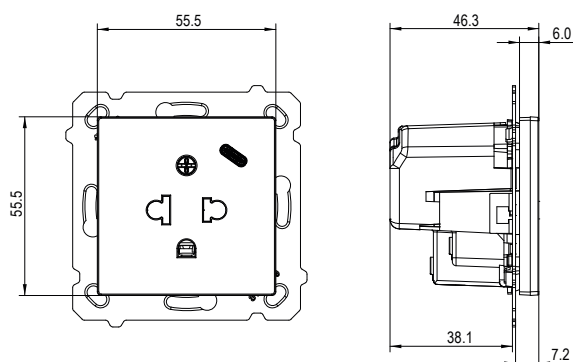
INSTALLATION INSTRUCTIONS

1. Connect the cables to the terminals and fix the metal plate into a square or round flush back box, either by using the fixing clamps (optional*) or by using the screws from the back box. Check that the plate is correctly leveled.
2. Fix the frame and cover to the insert by using the screw.
3. Check that the socket outlet is duly fixed.

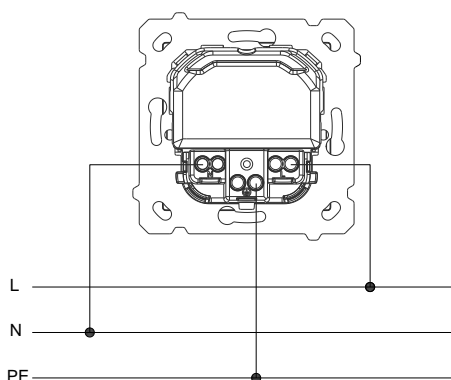
To remove it, proceed the reverse way.



DIMENSIONS (mm)



WIRING DIAGRAM



SAFETY INSTRUCTIONS AND ADDITIONAL NOTES

- Installation should only be performed by qualified professionals according to the laws and regulations applicable in each country.
- The facility must be equipped with a device that ensures the omnipolar sectioning. Installation of a 16 A mini-circuit-breaker is recommended. To prevent accidents, it must remain open in case of manipulation of the device.
- Keep the device away from water (condensation over the device included) and do not cover it with clothes, paper or any other material while in use.
- The WEEE logo means that this device contains electronic parts and it must be properly disposed of by following the instructions at <http://zennio.com/wEEE-regulation>.

