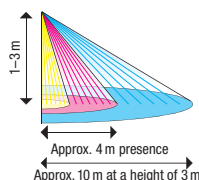




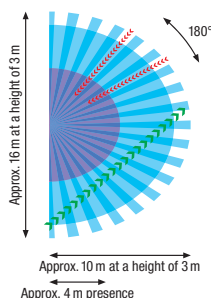
Swiss Garde 300
KNX/KLR IP55 AP/UP

DETECTION AREA



Installation height	Dia. for presence *	Dia. for movements *
1.0 m	2 m	6 m
1.5 m	3 m	7 m
2.0 m	4 m	8 m
2.5 m	4 m	9 m
3.0 m	4 m	10 m

* Maximum values



- **Optimum range**
If several zones are crossed
- **Reduced range (approx. -50%)**
With movements within a single zone
- Presence zone (working area)**
Reacts to smallest movements (seated activity)
- Movement zone (walking area)**
Reacts to larger walking movements

Swiss Garde 300 D Presence KNX/KLR

Presence detector with KNX/EIB interface, constant lighting control (KLR), wall-mounted

- 3 pyrodetectors and a high resolution lens detect the smallest of movements
- Operates fully or semi automatically
- Passive infrared (PIR) presence detector for ceiling installation with EIB interface
- A brightness sensor with linear output provides the light measurement. An integrated optical filter is matched to the profile of the human eye
- In all operating modes the light sensor can trigger a 0 or 1 telegram in the event of the light level exceeding or dropping below a parameterisable lux value. The measured light value in lux can also be read out via the bus

TECHNICAL DATA

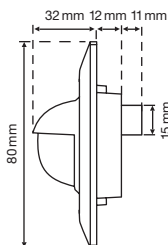
Nominal voltage:	24V DC (21–30V DC)
Power consumption:	0.4W
Detection angle:	180°
Detection range:	Approx. 4 m radius presence, approx. 10 m radius at 3 m height
Installation height:	1–3 m
PIR Sensors:	3 pyro sensors for extensive detection
Sensitivity:	Adjustable in 10 steps via ETS
Settings:	All settings can be parameterized via ETS3
Illuminance measurement:	Light sensor with optical filter and linear output
Illuminance value:	Lux Value export via bus
KNX connectors:	Bus terminal, 4 pins for wires (Ø 0.6–0.8 mm² each) per pol
Protection class:	SG 300 D Präsenz KNX/KLR: IP20 internal installation, class II, CE SG 300 KNX/KLR IP55 UP/AP: IP55 protected against water jets, class II, CE
Temperature range:	-20 to +40 °C
Dimensions:	SG 300 D Presence KNX/KLR: 80x80x32 mm (visible dimensions) SG 300 KNX/KLR IP55 UP: 86x86x30 mm (visible dimensions) SG 300 KNX/KLR IP55 AP: 86x86x84 mm (visible dimensions)

Characteristics/installation

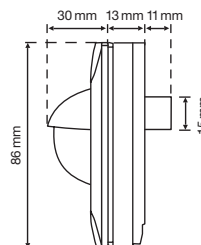
With 3 pyrodetectors and a high resolution lens the Swiss Garde 300 D Presence KNX detects the smallest of movements and evaluates every signal with electronics driven by a microcontroller. Can be programmed with ETS3:

Light control channel: After detecting a movement the detector sends a 1 telegram or a parameterisable dimming value (0–100%). If there is no movement then, after a parameterisable run-on time, the detector sends a 0 telegram or a second parameterisable dimming value (0–100%). **HVAC control channel:** This output only switches once 2 to 20 sequential observation windows of equal length have each detected at least one movement. **Master or slave operation:** Can be configured with ETS3. The light channel can be switched on or off with the IR remote control. After the reset time or after the AUTO button has been actuated the detector returns to normal operation. This KNX detector is also available with IP55 protection in UP or AP versions.

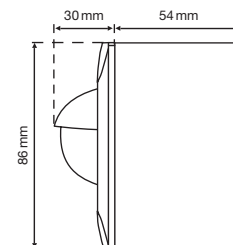
SG 300 D Presence
KNX/KLR



SG 300 KNX/KLR
IP55 UP



SG 300 KNX/KLR
IP55 AP



Description

Description	Color	Art.-No
Swiss Garde 300 D Presence KNX/KLR (wall-mounted)	white	25240
Swiss Garde 300 KNX/KLR IP55 UP	white	25241
Swiss Garde 300 KNX/KLR IP55 AP	white	25242
Other colors upon request		

See accessories catalog Züblin



Züblin Elektro GmbH Marie-Curie-Strasse 2 | D-79618 Rheinfelden-Herten
Phone +49 (0) 7623 96697-0 | Fax +49 (0) 7623 96697-7 | www.zublin.de