

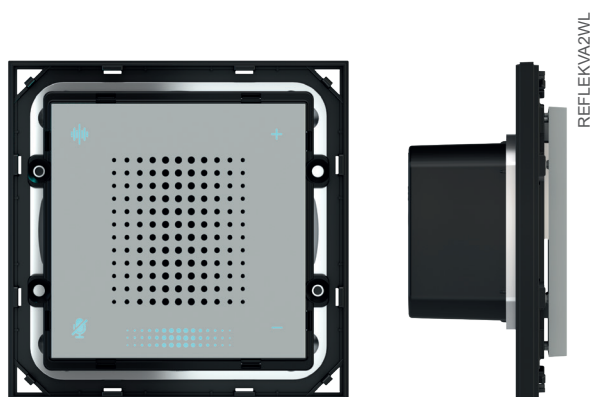
Amazon Alexa voice assistant for wall-mounting installation

Code: EK-VA2-WL



Datasheet STEKVA2WL_EN

Voice assistant for wall-mounted box installation, based on Amazon Alexa platform and built-in Alexa certified. Compatible with Deep and Surface series plates. Equipped with Wi-Fi and Bluetooth connections, it can be installed in any home system.



Description

The ekinex® EK-VA2-WL -... device is a voice assistant for wall installation with Wi-Fi and Bluetooth connections, based on the Amazon Alexa platform and Alexa built-in certified. The device is aesthetically and mechanically compatible with the current ekinex® 71 series and 20venti series, so that it can be installed both in a 2-place or 3-place box. Programming is intuitive and is done via Bluetooth connection via a special app, available for both iOS and Android smartphones. The interface with 4 RGB LED backlit keys allows to manually activate the voice assistant, activate / deactivate the microphone and adjust the speaker volume. The device can integrate with the KNX network via the ekinex® Delégo supervision system or the ekinex® EK-BW1-TP voice control interface. It is also supplied with a front cover already connected in plastic material, which can be painted on request in the same finishes in plastic, metal or Fenix NTM® shades available in the catalog. The device is powered at 12-24Vdc with an external power supply (not supplied by ekinex®).

Versions

Product code (*)	Description
EK-VA2-WL-...	Voice assistant (electronic device + cover) for round or square wall-mounting box
EK-VA2-WL-...-R	Voice assistant (electronic device + cover) for rectangular 503 wall-mounting box

(*) To be completed with the extension for colour

Main functional characteristics

- Cloud-based voice assistant
- Amazon Alexa built-in certification
- Ability to request information and manage compatible devices, apps and services to perform specific actions, including smart home commands
- Stand-alone operations via Wi-Fi and Bluetooth connection
- Programming via Bluetooth with iOS 9.1 or Android 5.1 (or higher) apps
- Integration with KNX network via ekinex® Delégo supervision system or ekinex® EK-BW1-TP voice control interface
- Interface with 4 backlit buttons with RGB LEDs for manual activation, ON / OFF microphone, speaker volume adjustment
- Front cover in plastic material, paintable on request in the same plastic, metal or Fenix NTM® finishes available in the catalog

Other characteristics

- Housing in plastic material
- Wall installation in flush mounting box
- Protection degree IP20 (installed device)
- Classification climatic 3K5 and mechanical 3M2 (according to EN 50491-2)
- Pollution degree 2 (according to IEC 60664-1)
- Weight 59 g
- Dimensions 65 x 65 x 38.5 mm (LxHxW)

Technical data

- Power supply: 12-24 Vdc (min. 9 Vdc)
- Input current in stand-by: 150 mA @ 12Vdc
- Maximum input current: 300 mA @ 12Vdc
- Speaker output power: 1 W
- Audio reception range: 5 m (in optimal ambient audio condition)
- Array of 2 microphones
- Wireless device compliant with 802.11b/g/n standard, frequency 2.412 - 2.484 GHz
- Bluetooth version 4.2 connectivity
- Maximum power: 7.2 W

Environmental conditions

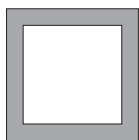
- Operating temperature: - 5 ... + 45°C
- Storage temperature: - 25 ... + 55°C
- Transport temperature: - 25 ... + 70°C
- Relative humidity: 95% not condensing

Delivery

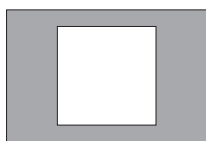
The metal support, the fixing screws (2 pairs), the terminal block for the connection to the power supply and the front cover (already connected to the voice assistant) are delivered with the device.

Finishing plate and possible frame

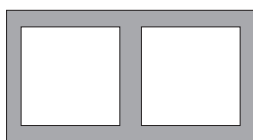
The device has to be completed with a ekinex® plate in plastic, metal or Fenix NTM® material. The plate must have (at least) a 60 x 60 mm window and is used in combination with a plastic adapter for mounting with the Deep or Surface series.



Square single plate (*)
with 60 x 60 mm window
Code EK-SQS-... (Surface)
Code EK-DQS-... (Deep)
Code EK-PQS-... (FF)
(to be used with EK-VA2-WL-...)

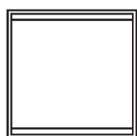


Rectangular single plate (*)
with 60 x 60 mm window
Code EK-SRS-... (Surface)
Code EK-DRS-... (Deep)
Code EK-PRS-... (FF)
(to be used with EK-VA2-WL-...-R)



Double plate (*)
with two 60 x 60 mm windows
Code EK-S2S-... (Surface)
Code EK-D2S-... (Deep)
Code EK-P2S-... (FF)
(to be used with EK-VA2-WL-...)

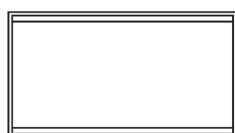
The device can be completed with a square ekinex® frame of the Form (EK-FOQ -...) or Flank (EK-FLQ -...) series; the 'NF (No Frame), Deep or Surface versions must be mounted without a frame. Double mounting at 71 mm center distance is also possible in combination with double frames from the Form (EK-FO2 -...) or Flank (EK-FL2 -...) series.



Square form frame (*)
EK-FOQ-...



Square flank frame (*)
EK-FLQ-...



Double form frame (*)
EK-FO2-...



Double flank frame (*)
EK-FL2-...

(*) To be completed with the extension for colour and finishing

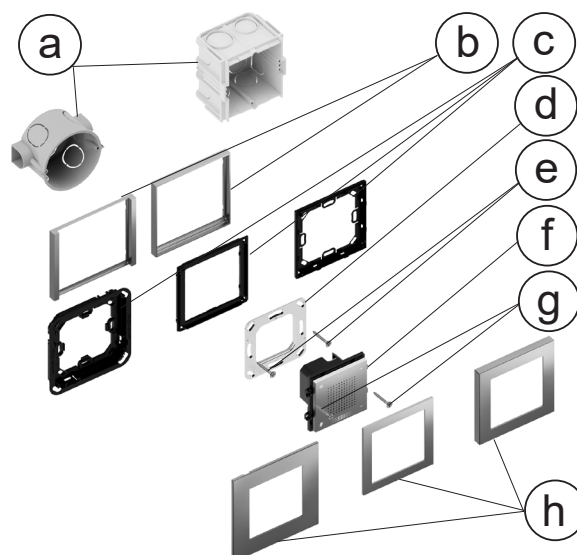


Note. The plate, the adapter and the possible frame for completing the device must be ordered separately. For more information on available materials, colours and finishes, see also the ekinex® product catalog or browse www.ekinex.com.

Mounting

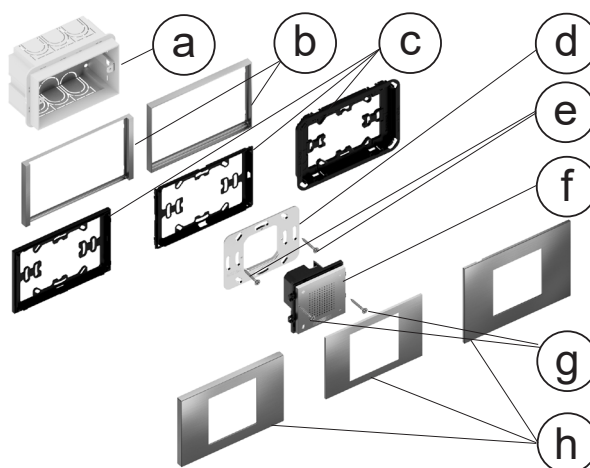
The device has degree of protection IP20, and is therefore suitable for use in dry interior rooms. The installation of the device can be done with round, square or rectangular flush mounting box.

To mount the device, please carry out the following operations:



Installation for round or square wall mounting box

- insert the metal support (d) on the adapter (c);
- fix the adapter-support assembly (c + d) by means of the pair of screws (e) on the wall-mounting box (a) with suitable holes, possibly inserting the frame (b) for the Form or Flank series;
- insert the voice assistant (f) into the support-adapter assembly (c+d), connecting the 12-24 Vdc power supply to the terminal on the rear side of the device (see the section: "Power supply connection");
- screw the device onto the adapter-support assembly (c+d), by using the supplied pair of screws (g);
- snap-fit the plate (h).



Installation for rectangular wall mounting box

- a) Wall mounting box
- b) Frame for Form or Flank series only
- c) Plastic adapter for square or rectangular plate (to be ordered separately)
- d) Metal support for wall mounting box
- e) Screws (for metal support)
- f) Voice assistant with cover
- g) Screws (for device)
- h) Square or rectangular plate for FF, Surface or Deep series (to be ordered separately)



Note. The screws supplied in the package are suitable for standard installations. For more specific applications, where the screws have to be replaced, only flat-head screws must be used.



Warning! In order to supply the device, only 12-24 Vdc power suppliers only are allowed. The use of other power supplies can compromise the communication and damage the devices connected to the bus.

Switching and display elements

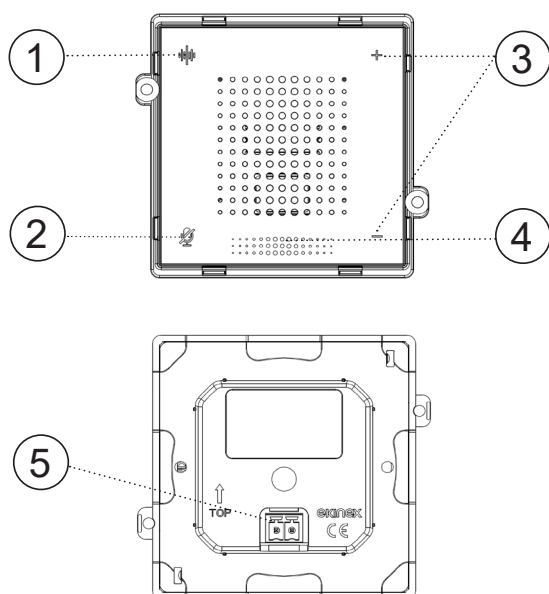
The device is equipped with buttons for activating some functions and RGB LEDs for the backlight.

Switching elements

- There are 4 backlit buttons for manual activation of the voice assistant (1), for the ON/OFF setting of the microphone (2) and for adjusting the speaker volume (3).

Display elements

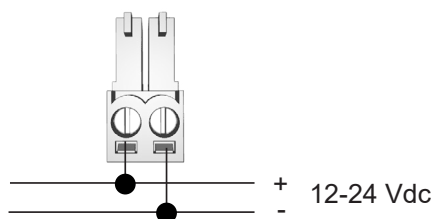
- RGB LEDs backlighting for each button and for the status bar (4).



- 1) Button for manual activation of the voice assistant
- 2) Mute (microphone ON/OFF) button
- 3) Volume Up button
- 4) Volume Down button
- 5) 12-24 Vdc power supply input block

Power supply connection

The power supply is connected via the 2-way terminal included in the device delivery. It has to be wired and inserted in the appropriate housing located on the back of the device (5), respecting the indicated polarity.



Characteristics of the terminal block

- Wire section: 28-16 AWG / 0.081-1.31 mm² (solid or stranded)
- Torque: 0.2 Nm
- Recommended wire stripping 6-7 mm
- Screw size: M2.0
- Flammability rating: UL94-V0



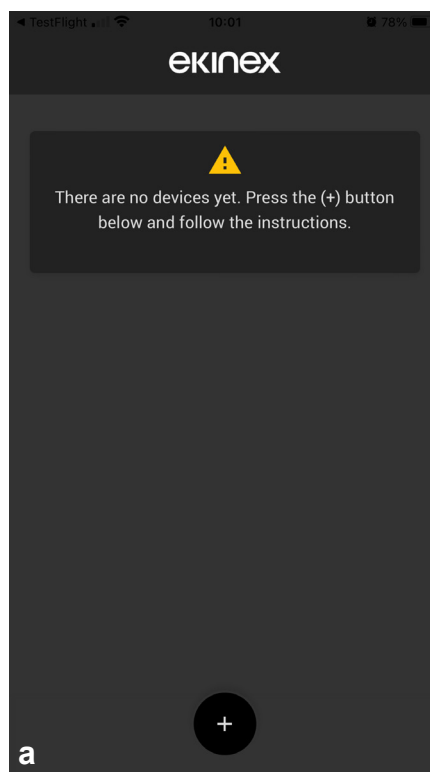
Warning! The electrical connection of the device can be carried out only by qualified personnel. The incorrect installation may result in electric shock or fire. Before making the electrical connections, make sure the power supply has been turned off.

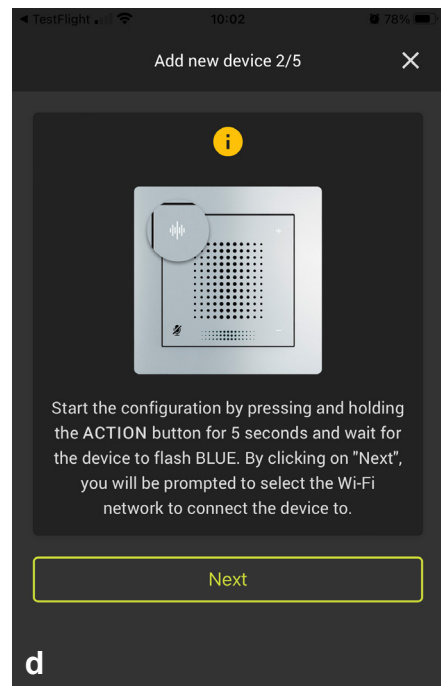
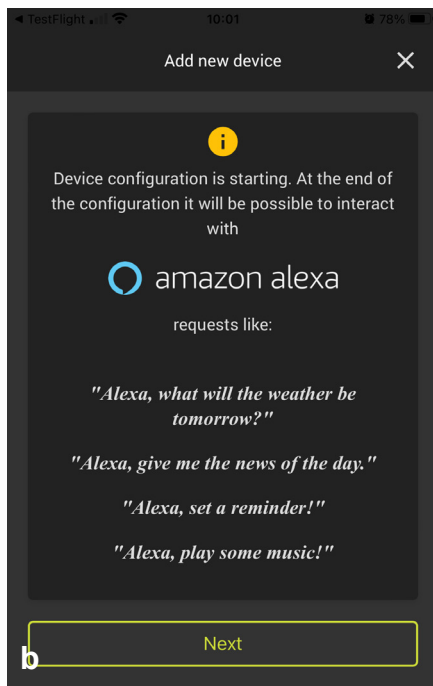
Configuration and commissioning

Configuration and commissioning of the device require the use of the “Ekinex Tool” app, available for Android and iOS systems and downloadable from the related digital stores.

The activities to be performed are as follows:

- Download and install the “Ekinex Tool” app;
- At the start, follow the steps of the wizard to add a new device (a), by pressing the virtual button “+”; by pressing on “Esegui” and “Next”, the configuration starts (b);

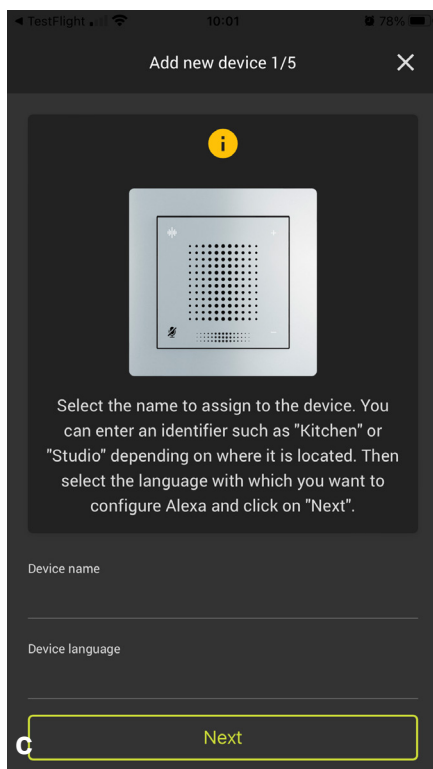




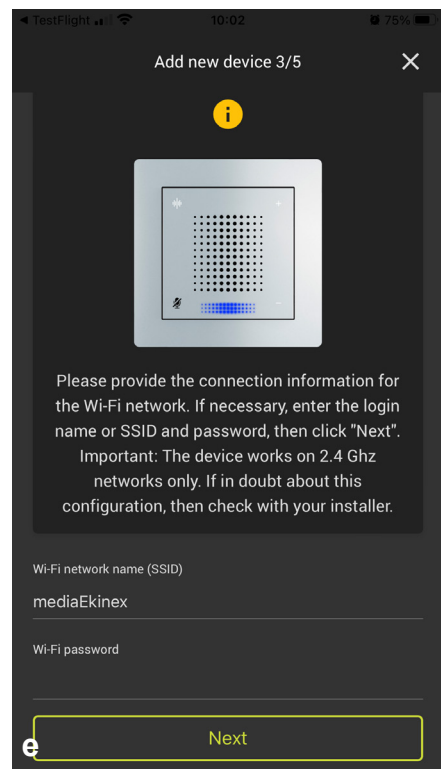
- On the next screen, the user is invited to enter a name for the device and the language in which the interaction with Amazon Alexa will take place (c); if no preference is specified, the English language will be used; press "Next" to continue;



Note. The setup procedure uses the Bluetooth connection of the device. If it is deactivated, the app will propose to activate it through the settings.

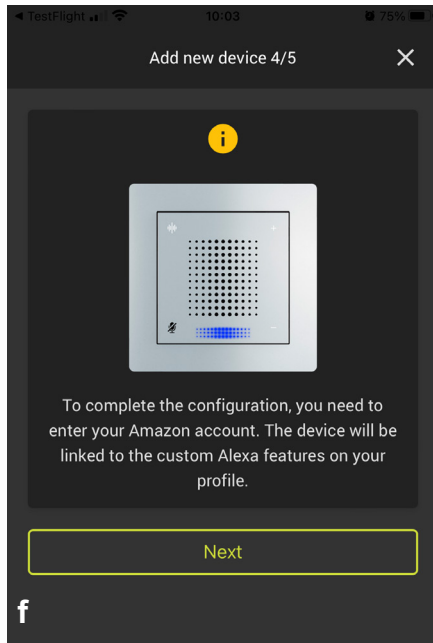


- The voice assistant automatically scans the network, listing the available 2.4 Ghz Wi-Fi networks to connect to: if required, allow the use of the location and the Bluetooth connection. Selected the network and entered the password, the user has to press "Next" again to connect the device to the Wi-Fi network (e);

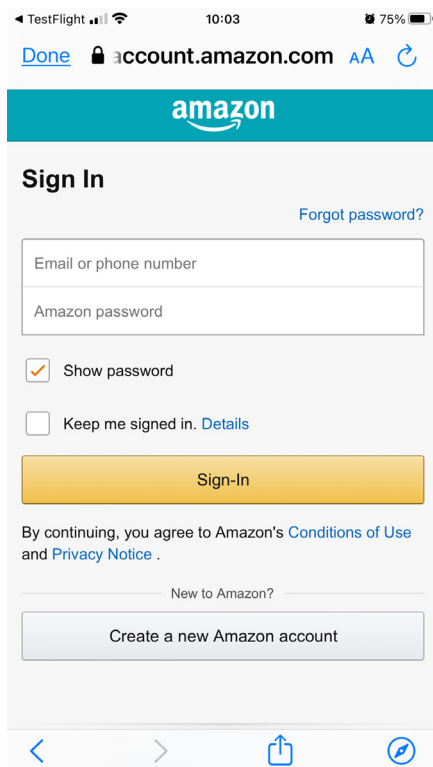


- On the next page, the user is asked to press and hold the "Action" button at the top left on the device for 5 seconds, until the status bar LED starts flashing blue (d): the device is now ready to be connected to a Wi-Fi network; press "Next" to start scanning;

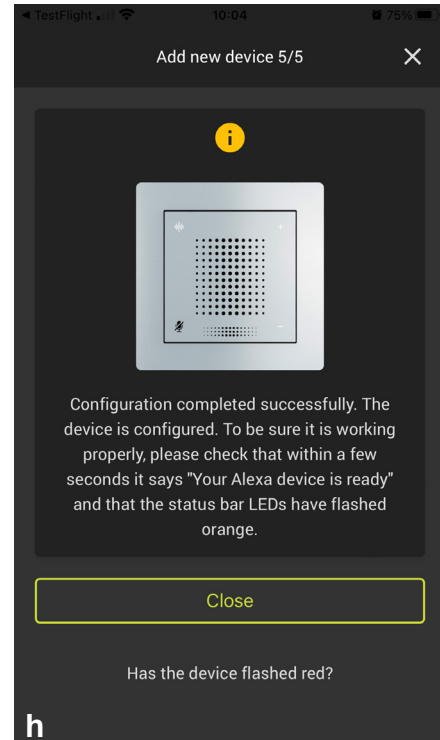
- To complete the configuration, the user has to log into an Amazon account (or create a new one); to start the login procedure, press the “Next” button (f) again;



- The app shows the Amazon login form, where the account credentials can be input (g); if the credentials entered are correct and associated with an existing Amazon account, the application comes back to the Ekinex Tool app interface;

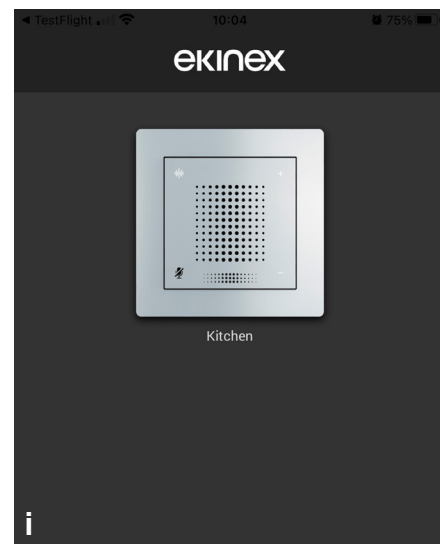


- By logging into your Amazon account, the device will be automatically added and visible through the official Alexa app. When the device says the phrase “Your Alexa device is ready”, the configuration is completed and the voice assistant is paired with the Amazon account (h). It is now possible to take advantage of all the features of the voice assistant. Then press on “Close” to complete the configuration.



Note. If the LEDs flash red during the configuration procedure, this was not completed correctly and must be repeated

- Once the configuration is complete, the voice assistant picture is displayed on the main screen (i): by pressing on it you can change its name, delete it from the list or perform the reset operation. This can happen in two different ways (j).

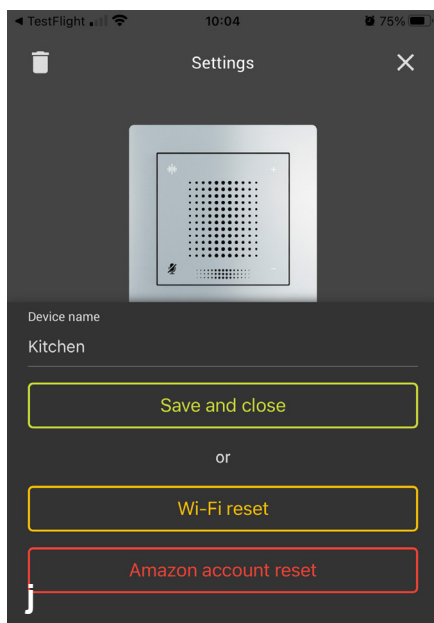


Network configuration reset:

By choosing this mode, it is possible to connect the device to a different Wi-Fi network than the one already configured. The previously associated Amazon account is maintained. To proceed, press the "Reset Wi-Fi" button.

Reset to factory settings:

By choosing this mode, you can restore the device to factory settings. The Wi-Fi network and the Amazon account associated with the device are deleted. To proceed, press on the "Amazon account reset" button.

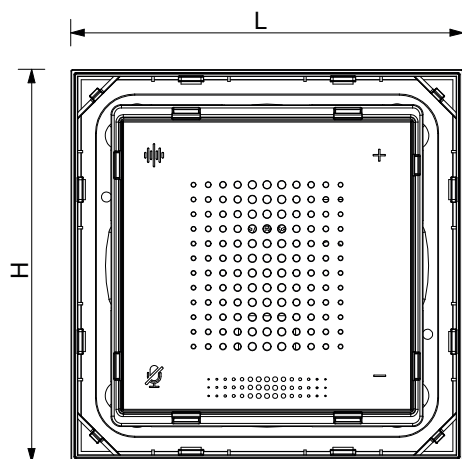


It is possible to use the voice assistant with the Ekinex skill, geared towards home automation and available in the Alexa app. For this purpose it is necessary:

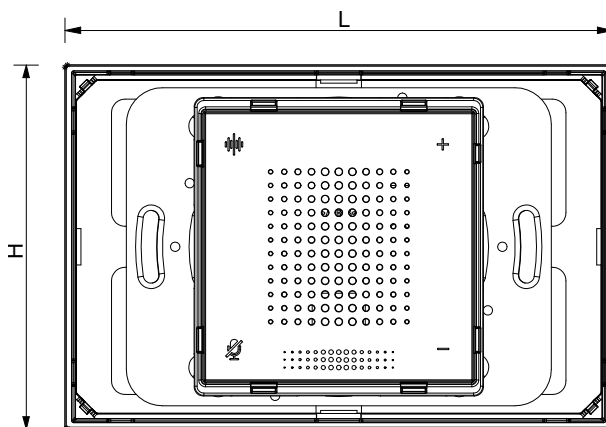
- have an ekinex® Delego supervision system or an ekinex® EK-BW1-TP voice control interface;
- having performed all the procedures described above for commissioning the voice assistant;
- download and install the "Amazon Alexa" app;
- activate the Ekinex skill in the Alexa app and connect the Amazon account on the Ekinex cloud.

For its configuration, please refer to the user manual.

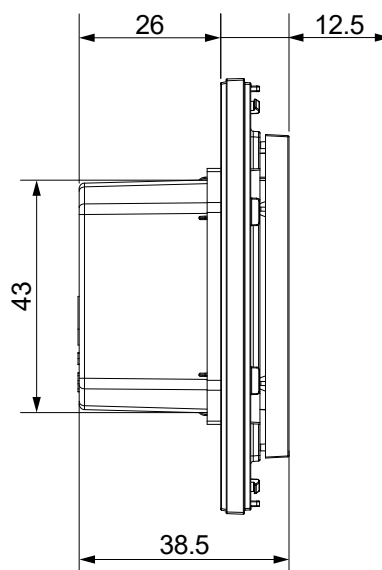
Dimensions [mm]



Mounting with frame: 81 x 77 (L x H) mm
Mounting without frame ('NF'): 80 x 80 (L x H) mm



Mounting with frame: 122 x 77 (L x H) mm
Mounting without frame ('NF'): 80 x 80 (L x H) mm



Marks

- CE: the device complies with the Low Voltage Directive (2014/35/EU) and the Electromagnetic Compatibility Directive (2014/30/EU). Tests carried out according to EN 50491-5-1:2010 and EN 50491-5-2:2010

Maintenance

The device is maintenance-free. To clean use a dry cloth. It must be avoided the use of solvents or other aggressive substances.

Disposal



At the end of its useful life the product described in this datasheet is classified as waste from electronic equipment in accordance with the European Directive 2012/19/EU (WEEE recast), and cannot be disposed together with the municipal undifferentiated solid waste.



Warning! Incorrect disposal of this product may cause serious damage to the environment and human health. Please be informed about the correct disposal procedures for waste collecting and processing provided by local authorities.

Warnings

- Installation and electrical connection of the device can only be carried out by qualified personnel in compliance with the applicable technical standards and laws of the respective countries
- Opening the housing of the device causes the immediate end of the warranty period
- In case of tampering, the compliance with the essential requirements of the applicable directives, for which the device has been certified, is no longer guaranteed
- ekinex® defective devices must be returned to the manufacturer at the following address: EKINEX S.p.A. Via Novara 37, I-28010 Vaprio d'Agogna (NO) Italy

Other information

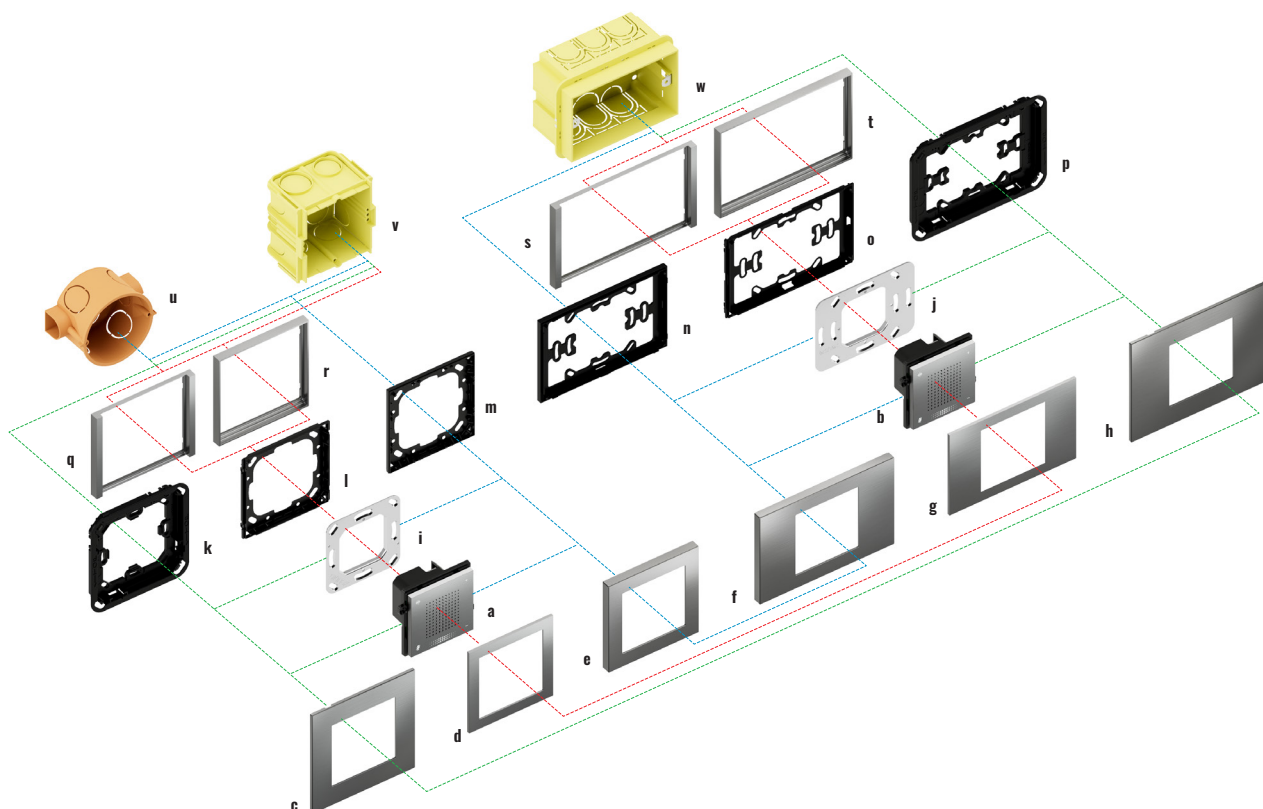
- The instruction sheet must be delivered to the end customer with the project documentation
- For further information on the product, please contact the ekinex® technical support at the e-mail address: support@ekinex.com or visit the website www.ekinex.com
- Each ekinex® device has a unique serial number on the label. The serial number can be used by installers or system integrators for documentation purposes and has to be added in each communication addressed to the EKINEX technical support in case of malfunctioning of the device
- Amazon® and Alexa® are registered trademarks of Amazon.com, Inc.
- Fenix NTM® is a registered trademark of Arpa Industriale S.p.A. - Italy

© EKINEX S.p.A. The company reserves the right to make changes to this documentation without notice.

Annex 1. Installation

The ekinex® EK-VA2-WL voice assistant is provided with a module for Wi-Fi and Bluetooth connections, it is based on the Amazon Alexa platform and Alexa built-in certified. It can be installed on a flush-mounting wall box, round (u) or square (v), equipped with 60 mm center-to-center fixing holes, or on a 3-seater rectangular wall-mounting box according to Italian standard (w) equipped with fixing holes with 83.5 mm center distance. Each device is supplied with a metal mounting support (i, j) which, if necessary, can also be ordered separately; The supply

is completed by a plastic cover (paintable on request) and a connection terminal to the 12-24 Vdc power supply. The voice assistant must be completed with a plate with at least one 60x60 mm window and has integrated RGB LEDs for signaling functions and 4 integrated backlit keys for command functions. The square (c, d, e) and rectangular (f, g, h) plates are available in three formal solutions (FF, Deep and Surface), in plastic, aluminum or Fenix NTM® and in numerous colors and finish.



Description	Code
a) b) Voice Assistant	EK-VA2-WL
c) Square plate Surface* version	EK-SQS-...
d) Square plate *	EK-PQS-...
e) Square plate Deep* version	EK-DQP-...
f) Rectangular plate Deep* version	EK-DRS-...
g) Rectangular plate*	EK-PRS-...
h) Rectangular plate Surface* version	EK-SRS-...
i) Metal support for mounting (square)	EK-SMQ-71
j) Metal support for mounting (rectangular)	EK-SMR-71
k) Adapter for square plate - Surface version	EK-TAS-Q-...-NF
l) Adapter for square plate - Form or Flank frame version	EK-TAQE-...

Description	Code
m) Adapter for square plate - 'NF or Deep version	EK-TAQE-...-NF
n) Adapter for rectangular plate - 'NF or Deep version	EK-TAR-...-NF
o) Adapter for rectangular plate - Form or Flank frame version	EK-TAR
p) Adapter for rectangular Surface plate**	EK-TAS-R-...
q) Square frame - Flank version	EK-FLQ-...
r) Square frame - Form version	EK-FOQ-...
s) Rectangular frame - Flank version	EK-FLR-...
t) Rectangular frame - Form version	EK-FOR-...
u) Round flush-mounting wall box	Not supplied by Ekinex®
v) Square flush-mounting wall box	
w) Rectangular 3-seater flush-mounting wall box	
*) 60 x 60 mm window	