

Price List 2/08

Retail prices exclusive VAT

Elsner Elektronik GmbH

Control and Automation Engineering

Herdweg 4

75391 Gechingen

Germany

Phone +49 (0)70 56/93 97-0

Fax +49 (0)70 56/93 97-20

info@elsner-elektronik.de

http://www.elsner-elektronik.de

Conservatory Automation

Conservatory Controls	2
Accessories Conservatory Controls	4
Conservatory Ventilation Units	5

Building Automation

Controls	6
Sensors	6

Accessories Conservatory and Building Automation

Electronic Control Units	7
Power Supply Units	8
Relays	8
Additional Accessories	9

Building Automation with KNX/EIB

KNX/EIB Sensors	10
KNX/EIB Actuators	12
KNX/EIB System Devices	12



Conservatory Controls: System XS



N° 10110 **Solexa**

Solexa Shading Control

Complete system for control of an awning (resp. a group of awnings) or blind (resp. a group of blinds). Meteorological station¹ with connection for drive. Radio connection between meteorological station and control unit. Battery-operated control unit with integrated indoor temperature sensor.

348,00 €

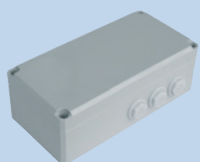


N° 10115 **Arexa**

Arexa Window Control

Complete system for control of a window (resp. a group of windows). Meteorological station¹ with connection for drive. Radio connection between meteorological station and control unit. Battery-operated control unit with integrated indoor temperature sensor.

348,00 €



N° 10120 **XS MSG2-AP**

System XS MSG2-AP Electronic Control Unit

Electronic Control Unit for 2 drives. Connection of the drives wired, control via radio. Can be combined with Solexa, Arexa and devices of System XS.

191,00 €



N° 10117 **XS 1B-D**

System XS 1B-D Control Unit with Display

Radio control unit for operation and adjustment of a drive via Electronic Control Unit XS MSG2-AP. Battery-operated, with integrated indoor temperature sensor, display reports weather data.

150,00 €



N° 10118 **XS 2B**

System XS 2B Twofold Control Unit

Radio control unit for manual operation of 2 drives via Electronic Control Unit XS MSG2-AP.

107,00 €

¹ Meteorological station with wind sensor, heated rain sensor, sun sensor, temperature sensor. The use of the weather data depends on the model of control.

Conservatory Controls



WS1 Conservatory Controls

Complete system with meteorological station². Indoor sensor for temperature und humidity integrated in the central unit WS1. Multifunctional output and connection for motion detector. Radio connection of ventilation units and air conditioners. For flush-mounting.

Available for 1, 2, 3 or 4 drive groups.

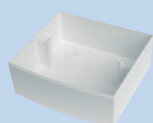
N° 10101	WS1-1 for 1 drive group	468,00 €
N° 10102	WS1-2 for 2 drive groups	782,00 €
N° 10103	WS1-3 for 3 drive groups	1.034,00 €
N° 10104	WS1-4 for 4 drive groups	1.287,00 €



WS1-L Ventilation Control

Complete system with outdoor temperature sensor and integrated indoor sensor for temperature und humidity. For flush-mounting.

N° 10105	WS1-L	275,00 €
----------	--------------	----------



Housing for Surface Mounting for WS1 and WS1-L

Suitable for all models.

N° 101AP	Housing for Surface Mounting WS1	39,00 €
----------	---	---------



WS1000 Conservatory Controls

Complete system with meteorological station². Indoor sensor for temperature und humidity integrated in the central unit WS1000. 3 multifunctional outputs for heating, cooling, alarm, light or gutter heating. Radio connection of ventilation units and air conditioners. Connection for motion or smoke detector. Graphical touch-display. For flush-mounting.

Available for 6, 8, 10, 12 or 14 drive groups.

N° 60106	WS1000-6 for 6 drive groups	1.787,50 €
N° 60108	WS1000-8 for 8 drive groups	2.026,60 €
N° 60110	WS1000-10 for 10 drive groups	2.265,70 €
N° 60112	WS1000-12 for 12 drive groups	2.504,80 €
N° 60114	WS1000-14 for 14 drive groups	2.743,90 €

² Meteorological station with wind sensor, heated rain sensor, sun sensor (position of sun is calculated by the control), temperature sensor, DCF77 receiver.

Accessories Conservatory Controls



Adapter Plate to change over to WS1000 with touch-display
Enables the installation of the WS1000 with touch-display onto the concealed switch box of the previous model of WS1000.

N° 60105 **Adapter Plate WS1000**

28,25 €



Telis 4 Pure Radio Control Set
For WS1000 Conservatory Control. Hand-held transmitter Telis 4 Pure with 5 channels and receiver (incl. assembly).

N° 605 **Telis 4 Pure Set**

181,00 €



RF-Relay Radio Relay
Radio relay for connection of additional actuators to the WS1000 Conservatory Control. Radio frequency 868 MHz.

N° 6053 **RF-Relay**

175,00 €



WGTH Thermo-Hygrometer
Additional external sensor for temperature and humidity for connection to WS1, WS1000 or WS1-L.

N° 205 **WGTH**

96,00 €

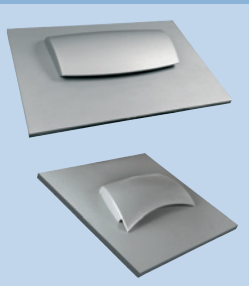


WGBL Ventilation Module
For motor-driven air supply and extraction units (third party devices). 8 levels. Also convenient for recirculation heaters. For flush-mounting.

N° 604 **WGBL**

256,00 €

Conservatory Ventilation Units



WL Conservatory Ventilation Units

Roof exhauster with air extraction and recirculation mode. Control via radio. Compatible with WS1, WS1000 and WS1-L without additional device. 3 standard colours³. Standard panel can be trimmed on three sides. The panel can be delivered already in the dimensions you need.

WL610 with net air rating max. approx. 462 m³/h.

WL305 with net air rating max. approx. 271 m³/h.

N° 60401	WL610 standard panel, RAL 9016	2.109,00 €
N° 60402	WL610 standard panel, RAL 9006	2.109,00 €
N° 60403	WL610 standard panel, RAL 9007	2.109,00 €
N° 60405	WL610 standard panel, special colour, single-coloured	2.312,00 €
N° 60406	WL610 standard panel, special colour, two coloured	2.515,00 €
N° 60411	WL610 pre-cut, RAL 9016	2.248,00 €
N° 60412	WL610 pre-cut, RAL 9006	2.248,00 €
N° 60413	WL610 pre-cut, RAL 9007	2.248,00 €
N° 60415	WL610 pre-cut, special colour, single-coloured	2.450,00 €
N° 60416	WL610 pre-cut, special colour, two coloured	2.652,00 €
N° 60421	WL305 standard panel, RAL 9016	1.458,00 €
N° 60422	WL305 standard panel, RAL 9006	1.458,00 €
N° 60423	WL305 standard panel, RAL 9007	1.458,00 €
N° 60425	WL305 standard panel, special colour, single-coloured	1.659,00 €
N° 60426	WL305 standard panel, special colour, two coloured	1.860,00 €
N° 60431	WL305 pre-cut, RAL 9016	1.596,00 €
N° 60432	WL305 pre-cut, RAL 9006	1.596,00 €
N° 60433	WL305 pre-cut, RAL 9007	1.596,00 €
N° 60435	WL305 pre-cut, special colour, single-coloured	1.798,00 €
N° 60436	WL305 pre-cut, special colour, two coloured	2.000,00 €



WFL Supply Air Unit

Supply Air Unit for conservatories. Control via radio. Compatible with WS1, WS1000 and WS1-L without additional device. 3 standard colours³. Standard panel can be trimmed on three sides. The panel can be delivered already in the dimensions you need.

N° 60441	WFL standard panel, RAL 9016	1.023,00 €
N° 60442	WFL standard panel, RAL 9006	1.023,00 €
N° 60443	WFL standard panel, RAL 9007	1.023,00 €
N° 60445	WFL standard panel, special colour, single-coloured	1.225,00 €
N° 60446	WFL standard panel, special colour, two coloured	1.427,00 €
N° 60451	WFL pre-cut, RAL 9016	1.160,00 €
N° 60452	WFL pre-cut, RAL 9006	1.160,00 €
N° 60453	WFL pre-cut, RAL 9007	1.160,00 €
N° 60455	WFL pre-cut, special colour, single-coloured	1.362,00 €
N° 60456	WFL pre-cut, special colour, two coloured	1.564,00 €

³ Standard colours: similar to RAL 9016 traffic white, 9006 white aluminium and 9007 grey aluminium. Special colours (according to RAL): single-coloured or two coloured (first colour panel and housing inside, second colour outside).

Controls



N° 701 **PS8A**

PS8A Evaluation Unit

With meteorological station⁴ and indoor temperature sensor. With 8 output relays, display and key pad. For assembly on a top hat rail.

Integration into KNX/EIB bus system possible via optional KNX/EIB Module CO485 (N° 7011).

790,00 €



N° 7042 **FS100**

FS100 Facade Control System

Complete system meteorological station⁴ and indoor temperature sensor. For up to 100 facades with IMSC (IECU, intelligent electronic control units) via RS485 bus system. For assembly on a top hat rail.

1.606,00 €

Sensors



N° 3014 **P03/1-RS485** with 1 sun sensor
N° 30143 **P03/3-RS485** with 3 sun sensors

P03-RS485 Meteorological Station

With wind sensor, heated rain sensor, outdoor temperature sensor and DCF77 receiver. RS485 interface. With combined fixture for wall/pole mounting, with 2 brackets for pole mounting.

P03/1-RS485 with 1 sun sensor.

P03/3-RS485 with 3 sun sensors (east, south and west).

379,00 €

393,00 €



N° 30161 **W-RS485**
N° 30162 **R-RS485**
N° 30163 **RW-RS485**
N° 30164 **LW-RS485**

Meteorological Sensors with RS485 interface

With RS485 interface. With combined fixture for wall/pole mounting, with 2 brackets for pole mounting.

W-RS485 Wind Sensor.

R-RS485 Rain Sensor.

RW-RS485 Rain/Wind Sensor.

LW-RS485 Light/Wind Sensor.

255,00 €

255,00 €

290,00 €

290,00 €

⁴ Meteorological station with wind sensor, heated rain sensor, sun sensors for east, south, west, twilight detection, temperature sensor, DCF77 receiver.

Sensors



N° 305 **T-KTY82**

T-KTY82 Temperature Sensor

Sensor for indoor and outdoor applications. For use with Actuators KNX S-B4T-UP or Intelligent Electronic Control Units IMMSG.

15,00 €



N° 70444 **RM1** with NGR1
N° 70445 **RM1** with NGR1-UP

RM1 Rain Sensor

Precipitation sensor with automatic 2.4 Watts heating. Available with Power Supply Unit NGR1 (for assembly on a top hat rail, with LED for power supply voltage and rain) or NGR1-UP (for assembly in a back box).

250,00 €

275,00 €



N° 70150 **SO250**

SO250 Tank Sensor

For measurement of the capacity of liquids in tanks and for distance measurement. 2 output relays. Voltage interface 0-10 V, current interface 0-20 mA. RS485 interface. Evaluation unit with display and key pad, assembly on top hat rail. Cable length of measuring sensor 10 m.

630,00 €

Electronic Control Units



N° 70440 **IMSG** for junction box
N° 70441 **IMSG-H** for top hat rail

IMSG Intelligent Electronic Control Units

For control of drives for shading or windows, with connection for in-situ manual push button and temperature sensor T-KTY82. RS485 interface, e.g. for Facade Control Unit FS100. Available for assembly in a junction box or on a top hat rail.

83,00 €

97,00 €



N° 7043 **MSG** for 1 drive
N° 70442 **MSG-H2** for 2 drives
N° 70443 **MSG-H4** for 4 drives

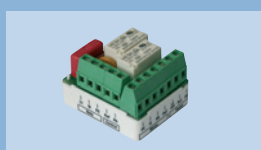
MSG Electronic Control Units

For control of drives for shading or windows, with connection for in-situ manual push button. Available for 1 drive (for assembly in a junction box) or for 2 or 4 drives (for assembly on a top hat rail).

60,00 €

102,50 €

146,25 €



N° 70446 **IMSG 230**

IMSG 230 Intelligent Electronic Control Unit

For control of drives for shading or windows. Inputs: Operating voltage 230 V AC, central command up/down, in-situ push button. Assembly in junction box.

63,00 €

Power Supply Units



WGDC Power Supply Units for DC motors

WGDC-2S 2 outputs, output voltage 12 V or 24 V or "soft start" (shifts up from 12 V to 24 V after 1 s of operation) with jumper.

WGDC-2P5 1 x 24 V continuous rating. For motors with 5-pole connection or drive mechanisms of the Belimo window ventilation system FLS.

N° 2014 **WGDC-2S** "soft start" function
N° 2015 **WGDC-2P5**

122,00 €
122,00 €



20 VAC Power Supply Unit e. g. for Meteorol. Station Suntracer KNX
Input voltage 230 VAC, output voltage 20 VAC. Suitable for the 24 VDC (20 VAC) models of Meteorological Station Suntracer KNX (basic) and KNX meteorological sensors. For assembly on a top hat rail.

N° 2018 **20 VAC Power Supply Unit**

62,00 €

Relays



WGGS Decoupling Relays without feeder to the power grid

Available with 2 motor connection clamps (for assembly in a back box) or with 4 motor connection clamps (with housing or for assembly on a top hat rail).

N° 2032 **WGGS-2** 2 connection clamps
N° 203 **WGGS-4** 4 connection clamps, housing
N° 2034 **WGGS-4-H** 4 connection clamps, top hat rail

28,50 €
85,00 €
63,20 €



WG-N-GS-4 Decoupling Relays with feeder to the power grid
With 4 motor connection clamps. With housing.

N° 202 **WG-N-GS-4**

85,00 €



RACDC-H AC/DC Relay

For up to two 24 V DC motors. 24 V DC input (external power supply required), 24 V DC output. Control with 230 V (up/down/N/PE). For assembly on a top hat rail.

N° 2016 **RACDC-H**

43,20 €



RP-H Potential-free Relay

Change-over contact for "up" and "down". Output can withstand up to 230 V/8 A. Control with 230 V (up/down/N/PE). For assembly on a top hat rail.

N° 2017 **RP-H**

43,20 €

Relays



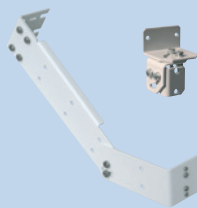
WG-PF Potential-free Relay

Change-over contact for "up" and "down". Control with 230 V (up/down/N/PE). For assembly in a junction box.

N° 2019 **WG-PF**

28,50 €

Additional Accessories



Hinge Arm Mountings for meteorological stations

Big for all meteorological stations/sensors of Elsner Elektronik. For wall/pole/beam mounting. 1 hinge, total length approx. 400 mm, powder-coated, color RAL 9016 (traffic white).

Small for all meteorological stations/sensors of Elsner Elektronik except P02 and RM1. 2 hinges, powder-coated, color light grey.

N° 30109 **Hinge Arm Mounting Big**
N° 30110 **Hinge Arm Mounting Small**

51,00 €
27,00 €



Mounting Brackets

For pole mounting of the meteorological stations of the conservatory, shading and window controls and of the big hinge arm mounting. Diameter 40-60 mm. 2 pieces.

N° 302321 **Brackets** for pole mounting, 2 pieces

2,45 €

KNX/EIB Sensors

**suntracer® KNX** Meteorological Station for KNX/EIB

With wind sensor, heated rain sensor (1.2 W), sun sensor, outdoor temperature sensor and DCF77 receiver. Calculation of the position of the sun. Calendar and week time switch. AND and OR logic gates. Configuration with ETS software. With combined fixture for wall/pole mounting, with 2 brackets for pole mounting.

Suitable 20 VAC power supply unit for 24 V DC (20 VAC) model: N° 2018.

N° 3090

Suntracer KNX 230 VAC**799,00 €**

N° 3091

Suntracer KNX 24 VDC (20 VAC)**799,00 €****suntracer® KNX basic** Meteorological Station for KNX/EIB

With wind sensor, heated rain sensor (1.2 W), sun sensor and outdoor temperature sensor. AND and OR logic gates. Configuration with ETS software. With combined fixture for wall/pole mounting, with 2 brackets for pole mounting.

Suitable 20 VAC power supply unit for 24 V DC (20 VAC) model: N° 2018.

N° 3095

Suntracer KNX basic 230 VAC**549,00 €**

N° 3096

Suntracer KNX basic 24 VDC (20 VAC)**549,00 €****KNX Meteorological Sensors**

With logic gates (AND and OR). Configuration with ETS software. With combined fixture for wall/pole mounting, with 2 brackets for pole mounting. Delivery with installation instructions⁵.

Suitable 20 VAC power supply unit for 24 V DC (20 VAC) model: N° 2018.

KNX W Wind Sensor for KNX/EIB.

KNX R Rain Sensor for KNX/EIB.

KNX RW Rain/Wind Sensor for KNX/EIB.

KNX LW Light/Wind Sensor for KNX/EIB.

N° 70122

KNX W 230 VAC**339,00 €**

N° 70123

KNX W 24 VDC (20 VAC)**339,00 €**

N° 70124

KNX R 230 VAC**309,00 €**

N° 70125

KNX R 24 VDC (20 VAC)**309,00 €**

N° 70126

KNX RW 230 VAC**399,00 €**

N° 70127

KNX RW 24 VDC (20 VAC)**399,00 €**

N° 70128

KNX LW 230 VAC**399,00 €**

N° 70129

KNX LW 24 VDC (20 VAC)**399,00 €****KNX PY** Pyranometer for KNX/EIB

Measures the global radiation. With 4 limit values and logic gates (AND and OR). Output of a mixed value from own and external value. Configuration with ETS software. With combined fixture for wall/pole mounting, with 2 brackets for pole mounting. Delivery with installation instructions⁵.

N° 70157

KNX PY**360,00 €**

⁵ Manual with detailed description of the parameters can be downloaded on www.elsner-elektronik.de or ordered with costs as printed version.

KNX/EIB Sensors



N° 70121 **KNX T-AP**

KNX T-AP Temperature Sensor for KNX/EIB

Sensor for indoor and outdoor applications. Output of an overall temperature (mixed value from own and external value). 4 limit values. PI controller for heating and cooling. Configuration with ETS software. For surface mounting. Delivery with installation instructions⁵.

149,00 €



N° 70166 **KNX T-UP**

KNX T-UP Temperature Sensor for KNX/EIB

Thermometer for indoor applications. With 4 limit values and logic gates (AND and OR). Output of a mixed value from own and external value. PI controller for heating/cooling. Configuration with ETS software. With display. For assembly in a socket. Delivery with installation instructions⁵.

149,00 €



N°. 70167 **KNX TH-UP**

KNX TH-UP Thermo-Hygrometer for KNX/EIB

Indoor sensor for temperature and humidity (relative and absolute). Calculation of dewpoint. With 7 limit values and logic gates (AND and OR). Output of a mixed value from own and external value. PI controller for heating/cooling (temperature) and ventilation (humidity). Configuration with ETS software. With display. For assembly in a socket. Delivery with installation instructions⁵.

189,00 €

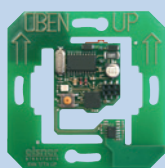


N° 70120 **KNX TH**

KNX TH Thermo/Hygrometer for KNX/EIB

Indoor sensor for temperature and humidity. Calculation of dewpoint. With 5 switching outputs. Configuration with ETS software. For surface mounting.

189,00 €



N° 70178 **KNX T-Objekt-UP**

KNX T-Objekt-UP Temperature Sensor for KNX/EIB

Sensor for indoor temperature. With 4 limit values and logic gates (AND and OR). Output of a mixed value from own and external value. PI controller for heating/cooling. Configuration with ETS software. For assembly in a socket with cover (cover not included in scope of delivery). Delivery with installation instructions⁵.

89,00 €



Nr. 70160 **KNX AQS**

KNX AQS Air Quality Sensor for KNX/EIB

Measures the concentration of CO₂ in the ambient air. With 4 limit values and logic gates (AND and OR). Output of a mixed value from own and external value. PI controller for one- or two-stage ventilation. Configuration with ETS software. For assembly in a junction box. Delivery with installation instructions⁵.

199,00 €

⁵ Manual with detailed description of the parameters can be downloaded on www.elsner-elektronik.de or ordered with costs as printed version.

KNX/EIB Sensors



KNX SO250 Tank Sensor for KNX/EIB

For measurement of the capacity of liquids in tanks and for distance measurement. KNX interface, 2 output relays. Configuration with ETS software. Evaluation unit with display and key pad, assembly on top hat rail. Cable length of measuring sensor 10 m. Delivery with installation instructions⁵.

N° 70151 **KNX SO250**

780,00 €



CO485 KNX/EIB Module for Evaluation Unit PS8A

Enables the integration of the Evaluation Unit PS8A into the KNX bus system. Output of meteorological data, twilight detection, date, time and relay status as KNX telegrams. For assembly on a top hat rail.

N° 7011 **CO485**

350,00 €

KNX/EIB Actuators



KNX S KNX/EIB Actuators for shading or windows

Available for 24 V DC motors or 230 V motors (motor connection of the 230 V models with microfuse T6,3 A). Configuration with ETS software. For assembly in a flush mounted socket. Delivery with installation instructions⁵.

KNX S-B4T-UP: 4 binary inputs, 1 input for temperature sensor (T-KTY82).

KNX S-B2-UP: 2 binary inputs.

KNX S-UP: without additional inputs.

N° 70130 **KNX S-B4T-UP** 24 V DC
N° 70131 **KNX S-B4T-UP** 230 V AC

169,00 €

159,00 €

N° 70132 **KNX S-B2-UP** 24 V DC
N° 70133 **KNX S-B2-UP** 230 V AC

135,00 €

130,00 €

N° 70134 **KNX S-UP** 24 V DC
N° 70135 **KNX S-UP** 230 V AC

110,00 €

105,00 €

KNX/EIB System Devices



KNX PS640 Power Supply Systems for KNX/EIB

The power supplies deliver a 29 V bus voltage for the KNX/EIB system and 24 V DC supply voltage for 24 V devices. Output current max. 640 mA. With display and key pad. For assembly on a top hat rail.

KNX PS640 for bus voltage and 24 V DC, Reset by means of the key pad possible.

KNX PS640+ for bus voltage and 24 V DC, with additional bus functions (transfer of malfunction messages/operating data to the bus; time/period reset via the bus). Delivery with installation instructions⁵.

N° 70140 **KNX PS640**
N° 70141 **KNX PS640+** with bus functions

348,00 €

428,00 €

⁵ Manual with detailed description of the parameters can be downloaded on www.elsner-elektronik.de or ordered with costs as printed version.